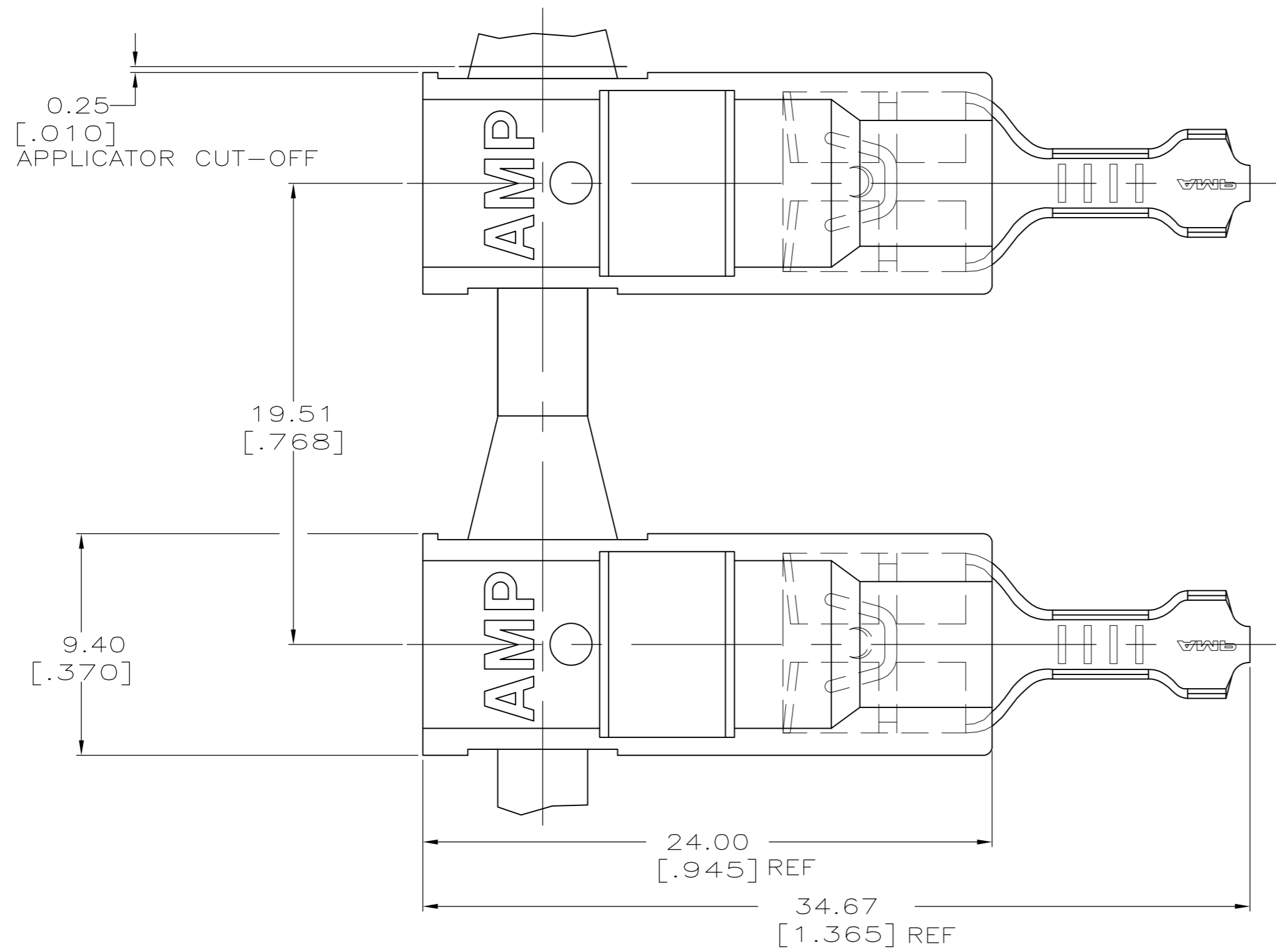
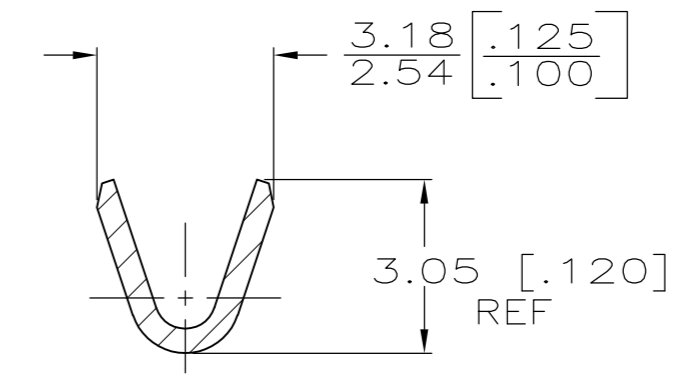


THIS DRAWING IS UNPUBLISHED. RELEASED FOR PUBLICATION
 © COPYRIGHT - By - ALL RIGHTS RESERVED.

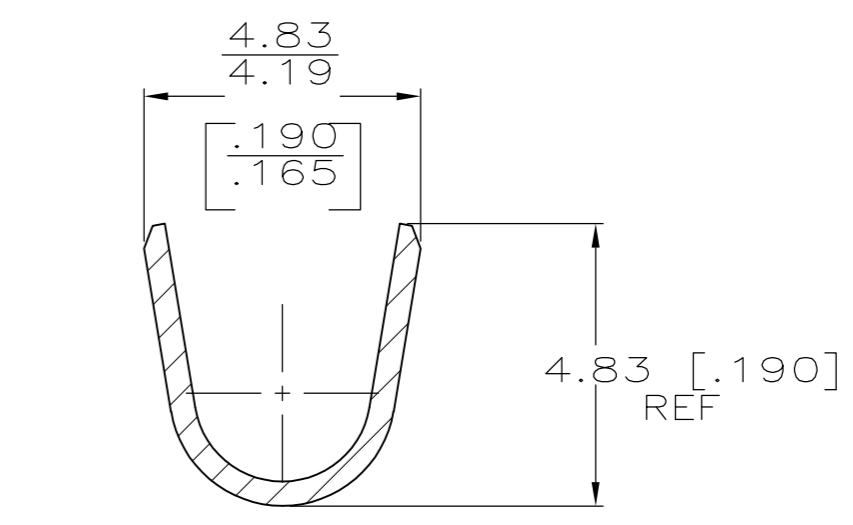
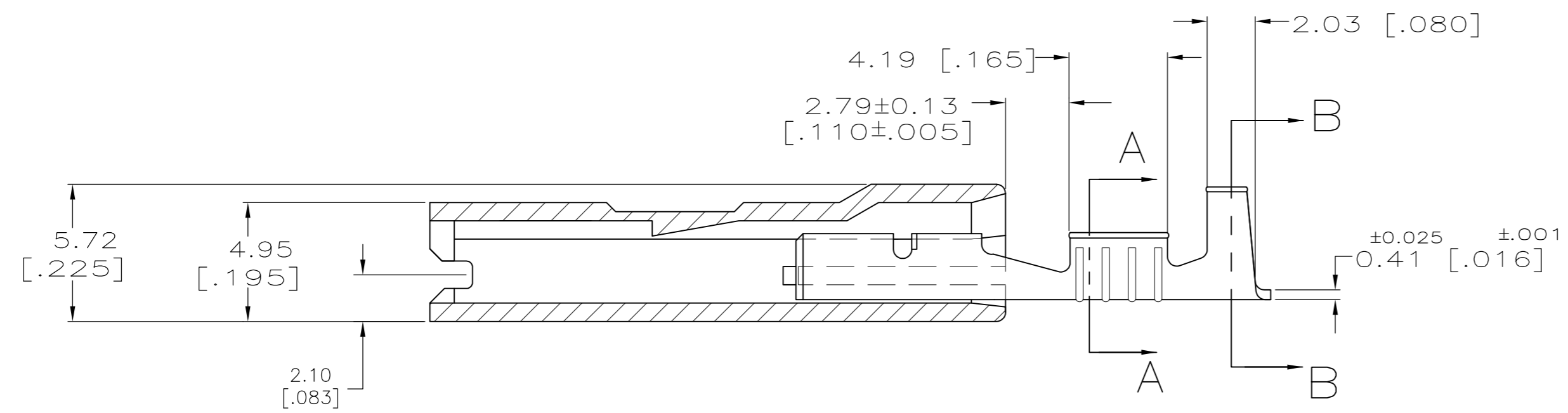
LOC		DIST		REVISIONS			
P	LTR	DESCRIPTION		DATE	DWN	APVD	
	B1	REVISED PER ECR-18-002453		02MAR2018	BDA	DS	



- 1 LOW-INSERTION FASTON TERMINALS, BASE PART NUMBER 2238027, ARE USED IN THIS PRODUCT.
- 2 OFFERED FOR CONSIDERATION IN APPLICATIONS REQUIRING "NON-DRIP" HOUSING MATERIAL.
- 3 PRE-PRODUCTION FASR REQUIRED.
- 4 WIRE SIZE: 0.3-0.8 mm² [22-18]
- 5 INSULATION RANGE: 2.29-3.30 [.090-.130]
- 6 MATING TAB THICK: 0.81±0.025[.032±.001]
- 7 GLOW WIRE APPROVED: CONTACT TE ENGINEERING FOR SPECIFICATION (ALL WALL THICKNESS ARE BETWEEN 0.4 - 3.0 [.015-.118].
- 8 OBSOLETE PARTS



SECTION A-A
SCALE 8:1



SECTION B-B
SCALE 8:1

TIN PLATE	NATURAL, V2, WHITE	7 3	1969161-3
TIN PLATE	NYLON 66, V0	3	1969161-2
PLAIN	NATURAL (WHITE)	8 3	1969161-1
TERMINAL FINISH	HOUSING		PART NO

THIS DRAWING IS A CONTROLLED DOCUMENT.		DWN	13OCT09		TE Connectivity		
DIMENSIONS: mm [INCHES]		CHK	13OCT09		NAME		
TOLERANCES UNLESS OTHERWISE SPECIFIED:		APVD	13OCT09		ASSEMBLY, HOUSING & RECEPTACLE, 6.35 [.250] SERIES ULTRA-POD		
0 PLC ± -		PRODUCT SPEC			SIZE	CAGE CODE	DRAWING NO
1 PLC ± -		APPLICATION SPEC		A2	00779	C=1969161	
2 PLC ± 0.25 [.010]				SCALE	SHEET	REV	
3 PLC ± -				5:1	1 of 1	B1	
4 PLC ± -				CUSTOMER DRAWING			
ANGLES ± -							
FINISH SEE TABLE							
MATERIAL	BRASS	WEIGHT					