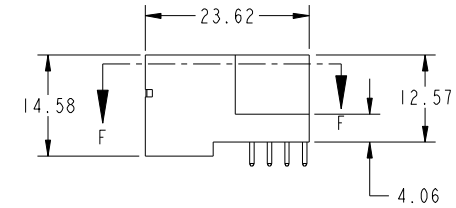
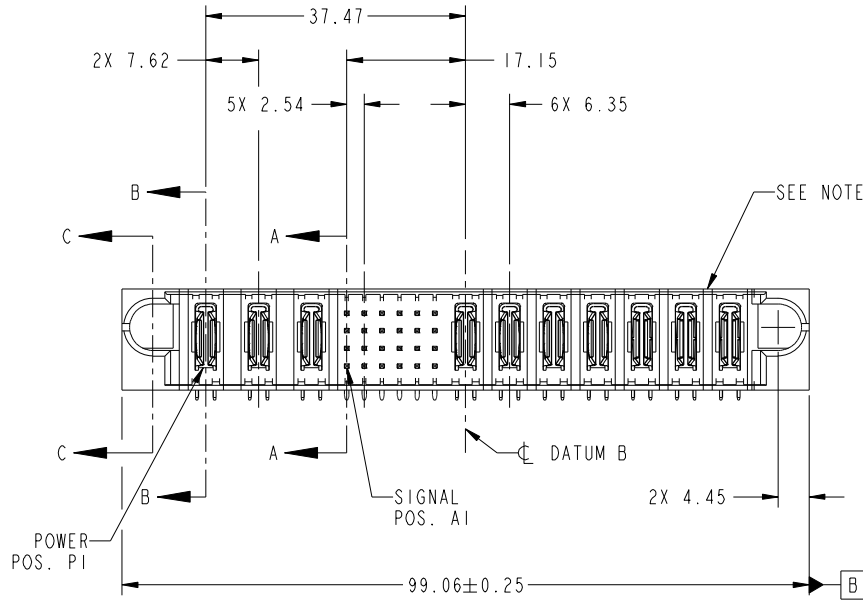


Tous droits strictement réservés. Reproduction ou communication a des tiers interdite sous quelque forme que ce soit sans autorisation écrite du propriétaire. Propriété de c FCI. Droits de reproduction FCI.



All rights strictly reserved. Reproduction or issue to third parties in any form whatever is not permitted without written authority from the proprietor. Property of FCI. Copyright FCI.

PRODUCT NO. 51939-473-- NOTE 3	ROWS D C B A	POWER			SIGNAL				POWER						E2	
		E1	P1	P2	P3	1	2	3	4	5	6	P4	P5	P6		P7



CODE	DIM "M" MATING LENGTH	CONTACT TYPE
U	[6.86]	SIGNAL
T	[6.86]	SIGNAL
S	[6.86]	SIGNAL
R	[6.86]	SIGNAL
PA	[N/A]	POWER
E	[5.59]	SIGNAL
PS	[N/A]	POWER

mat'l code				SEE NOTE		tolerances unless otherwise specified		CUSTOMER	
ltr	ecn no.	dr	date	linear	0.X ±0.5	COPY		projection	
A	DG09-0309	WL	09/21/09	angles	0.XX ±0.25	MIM		title	
					0.XXX ±0.10	1:1		3ACP + 24S + 7P RIGHT ANGLE SOLDER HEADER	
				dr	0° ±2°	scale		product family	
				enr	WL ZHANG 09/21/09	A		PwrBlade	
				chr	JEROME CHEN 09/21/09			code	
				appd	PM ZHENG 09/21/09			213	
					JOSEPH HSIA 09/21/09			1 of 4	
sheet index	revision sheet	A	A	A	A				
		1	2	3	4				

CONFIDENTIAL

www.fciconnect.com

title
3ACP + 24S + 7P
RIGHT ANGLE SOLDER HEADER

product family
PwrBlade

size
A

dwg no
51939-473

code
213

sheet
1 of 4

cage code
22526

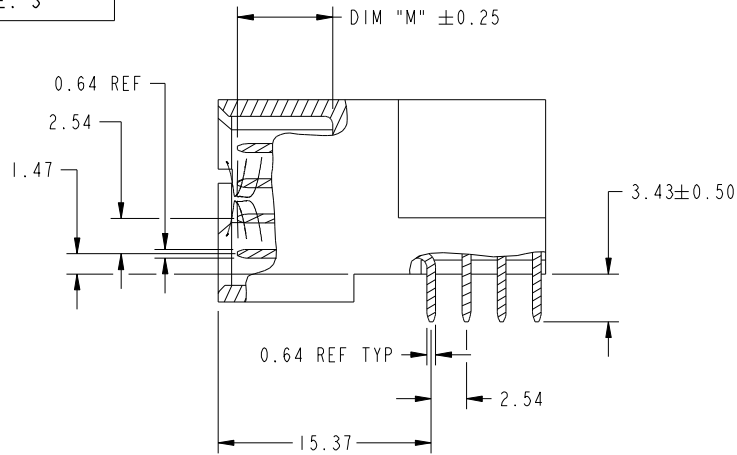
Pro/E

Tous droits strictement reserves. Reproduction ou communication a des tiers interdite sous quelque forme que ce soit sans autorisation écrite du propriétaire. Propriete de c FCI. Droits de reproduction FCI.

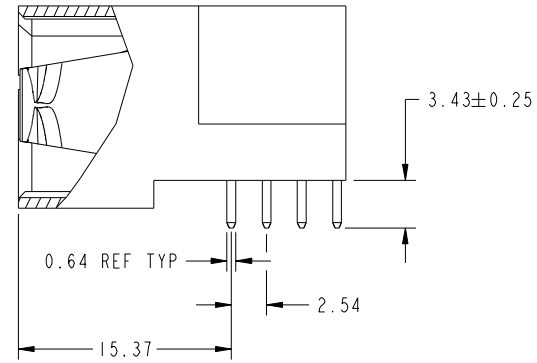
All rights strictly reserved. Reproduction or issue to third parties in any form whatever is not permitted without written authority from the proprietor. Property of FCI. Copyright FCI.



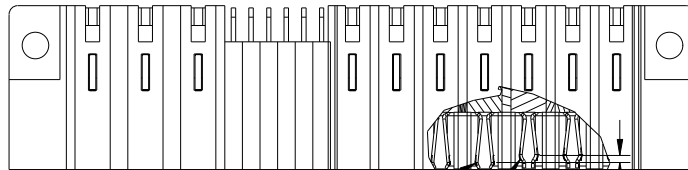
PRODUCT NUMBER
51939-473--
NOTE: 3



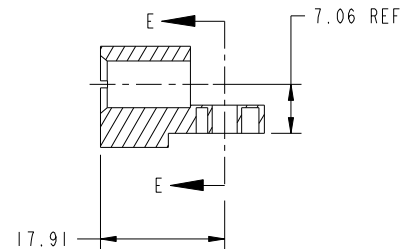
BROKEN-OUT SECTION A-A
SCALE 2:1



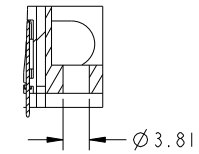
BROKEN-OUT SECTION B-B
SCALE 2:1



SECTION F-F



SECTION C-C



PARTIAL SECTION E-E

CONFIDENTIAL

mat'l code				SEE NOTE		tolerances unless otherwise specified		CUSTOMER		FCI	
ltr	ecn no.	dr	date	linear	0.X ±0.5		COPY		www.fciconnect.com		
A					0.XX ±0.25		projection		title		
					0.XXX ±0.1				3ACP + 24S + 7P RIGHT ANGLE SOLDER HEADER		
				angles	0° ±2°				product family		code
				dr	WL ZHANG 09/21/09		scale		PwrBlade		213
				enrg	JEROME CHEN 09/21/09		1:1		size		sheet
				chr	PM ZHENG 09/21/09		A		dwg no		2 of 4
				appd	JOSEPH HSIA 09/21/09		1:1		51939-473		
sheet index	revision sheet										

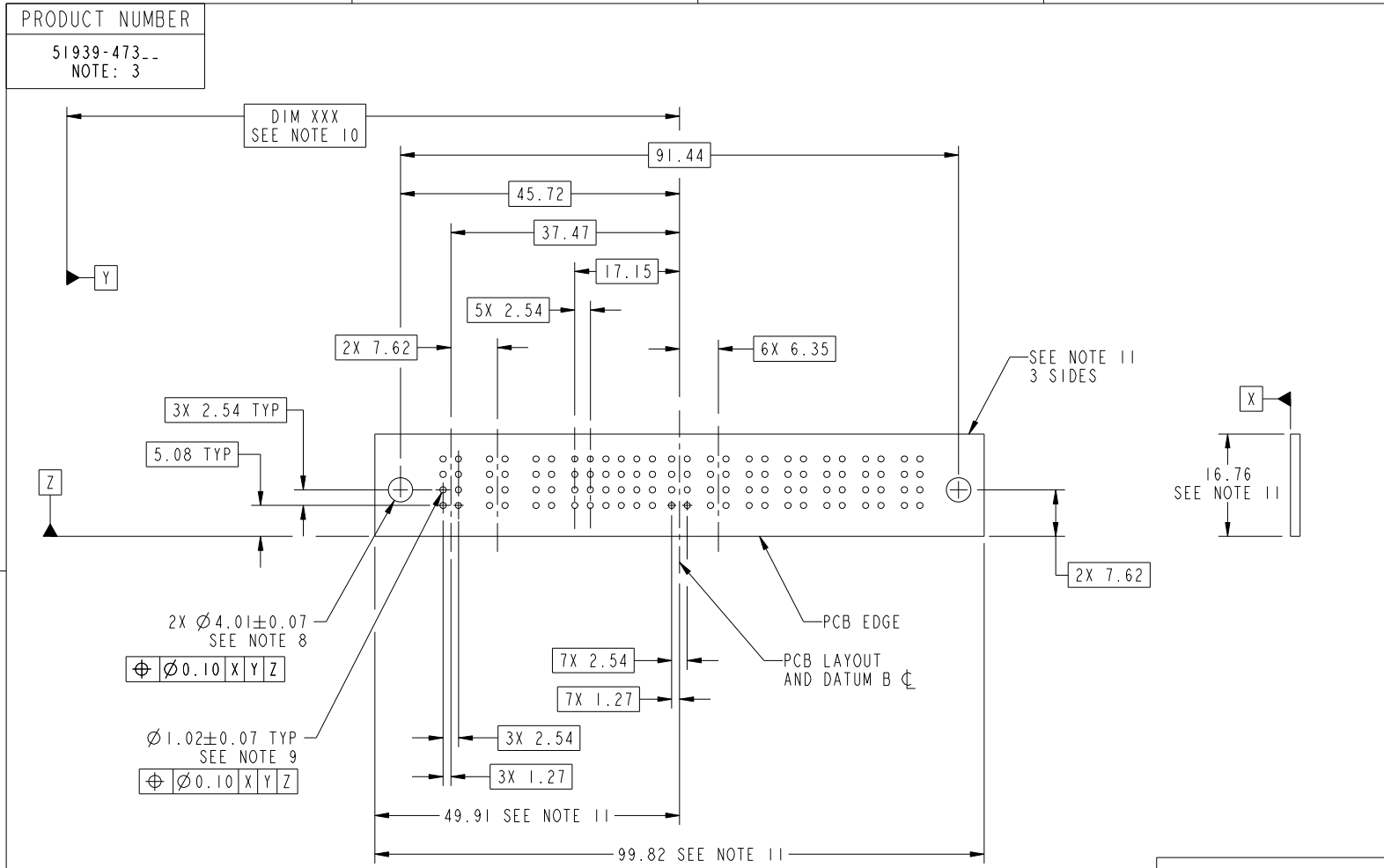
Pro/E

cage code 22526

Tous droits strictement reserves. Reproduction ou communication a des tiers interdite sous quelque forme que ce soit sans autorisation écrite du propriétaire. Propriete de c FCI. Droits de reproduction FCI.



All rights strictly reserved. Reproduction or issue to third parties in any form whatever is not permitted without written authority from the proprietor. Property of FCI. Copyright FCI.



RECOMMENDED PCB LAYOUT

CONFIDENTIAL

mat'l code		SEE NOTE		tolerances unless otherwise specified		CUSTOMER		FCI		www.fciconnect.com	
ltr	ecn no.	dr	date	linear	0.X ± 0.5	COPY		projection		title	
A					0.XX ± 0.25	MIM				3ACP + 24S + 7P RIGHT ANGLE SOLDER HEADER	
				angles	0.XXX ± 0.1	scale		product family		code	
				dr	0° ± 2°	1:1		PwrBlade		213	
				enr	WL ZHANG 09/21/09			size		sheet	
				chr	JEROME CHEN 09/21/09			dwg no		3 of 4	
				appd	PM ZHENG 09/21/09			51939-473			
					JOSEPH HSIA 09/21/09						
sheet index	revision sheet										

cage code 22526

Pro/E

Tous droits strictement reserves. Reproduction ou communication a des tiers interdite sous quelque forme que ce soit sans autorisation écrite du propriétaire. Propriete de c FCI. Droits de reproduction FCI.



All rights strictly reserved. Reproduction or issue to third parties in any form whatever is not permitted without written authority from the proprietor. Property of FCI. Copyright FCI.

PRODUCT NUMBER
51939-473--
NOTE: 3

NOTES:

1. DIMENSIONS AND TOLERANCES ARE IN ACCORDANCE WITH ASME Y14.5M, 1994 UNLESS OTHERWISE SPECIFIED.

CONNECTOR NOTES:

- 2. HOUSING MATERIAL: UL 94 V-0 GLASS FILLED
HIGH-TEMP THERMOPLASTIC
POWER CONTACT MATERIAL: COPPER ALLOY
SIGNAL PIN MATERIAL: COPPER ALLOY
- 3. PLATING SPEC.
SEE ITEM 1 & 2 IN PRINT 10064183 FOR PLATING SPEC OF 51939-473; 51939-473LF PRESPECTIVELY
- 4. MANUFACTURER'S NAME, P/N, AND DATE CODE TO APPEAR ON THIS SURFACE.
- 5. PRODUCT SPECIFICATION GS-12-149.
APPLICATION SPECIFICATION BUS-20-067.
- 6. PACKAGED IN TRAYS.

PCB NOTES:

- 7. ALL HOLE DIAMETERS ARE FINISHED HOLE SIZE.
- 8. MOUNTING HOLES, WHERE APPLICABLE, ARE UNPLATED.
- 9. $\varnothing 1.151 \pm 0.025$ DRILLED HOLES PLATED WITH 0.008 MIN SnPb OR Sn OVER 0.03 TO 0.08 Cu PLATING TO ACHIEVE $\varnothing 1.02 \pm .07$ HOLE.
- 10. "DIM XXX" TO BE DETERMINED BY THE CUSTOMER.
- 11. CONNECTOR KEEP-OUT ZONE.

CONFIDENTIAL

mat'l code				SEE NOTE		tolerances unless otherwise specified		CUSTOMER		FCI		www.fciconnect.com	
ltr	ecn no.	dr	date	linear	0.X ± 0.5		COPY		projection	title			
A					0.XX ± 0.25		MIM			3ACP + 24S + 7P RIGHT ANGLE SOLDER HEADER			
					0.XXX ± 0.1		← MIM →			product family PwrBlade code			
				angles	0° ± 2°		scale		size		sheet		
				dr	WL ZHANG	09/21/09	1:1		A		213		
				enr	JEROME CHEN	09/21/09					4 of 4		
				chr	PM ZHENG	09/21/09							
				appd	JOSEPH HSIA	09/21/09							
sheet index	revision sheet												

cage code 22526

Pro/E