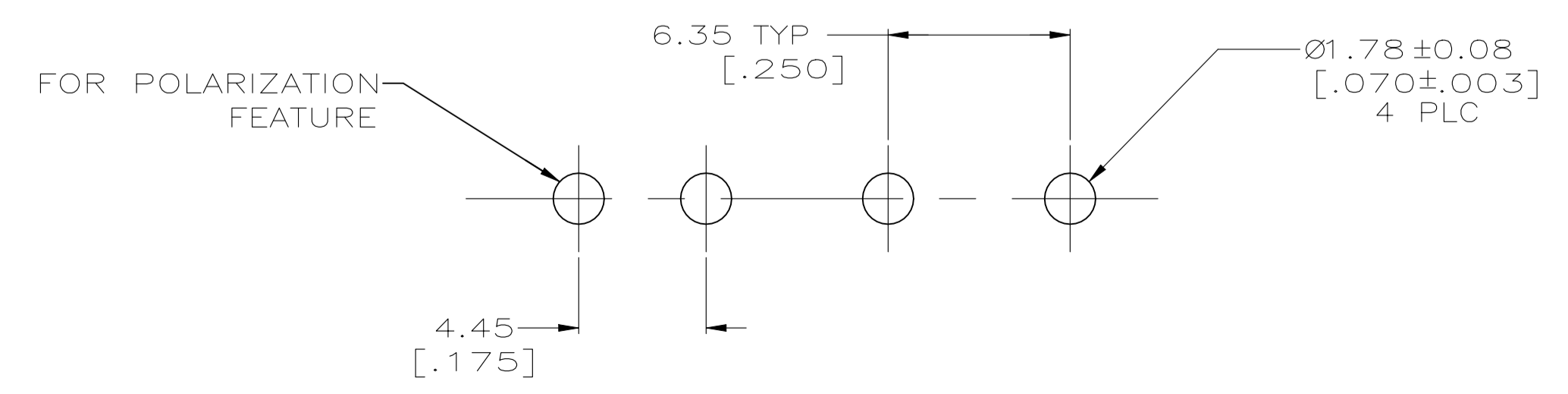
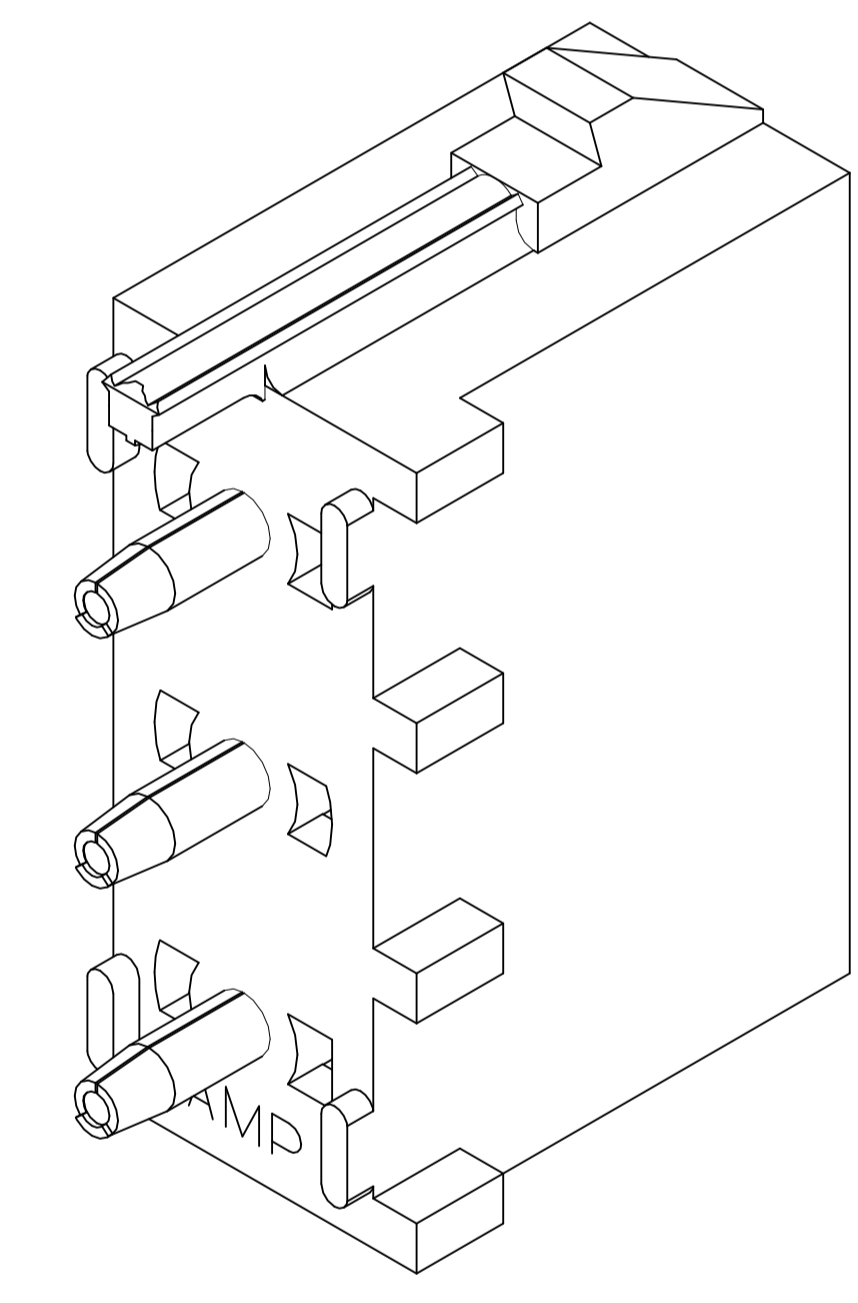
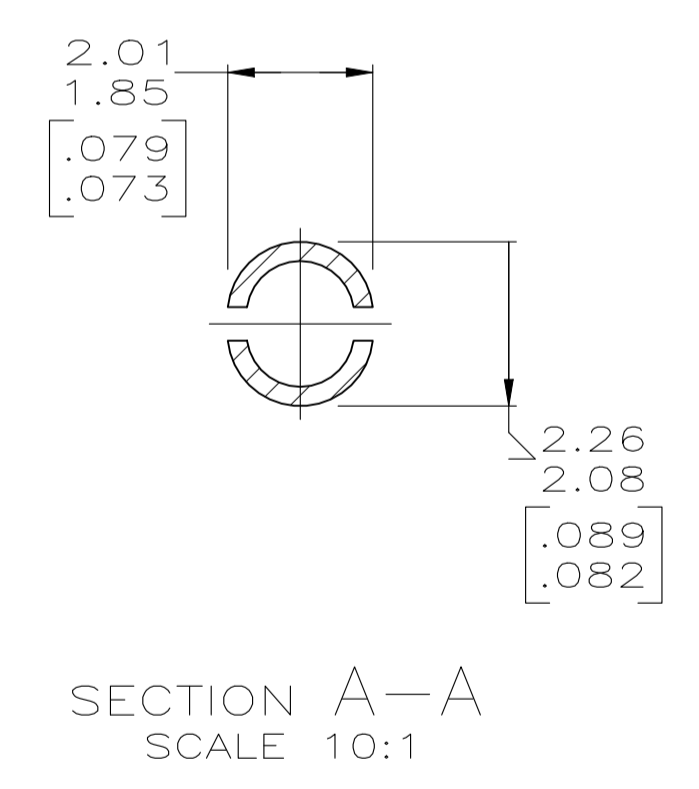
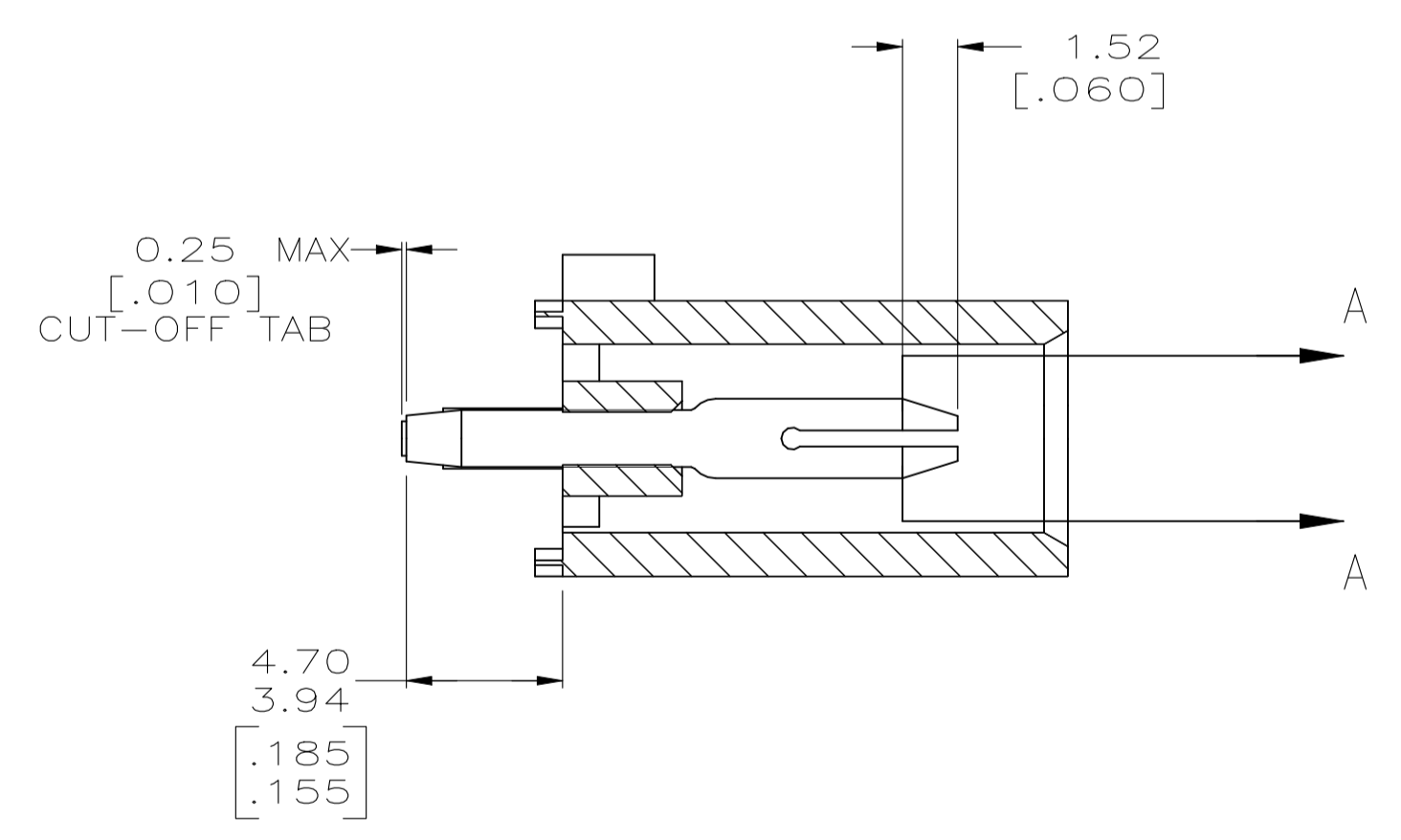
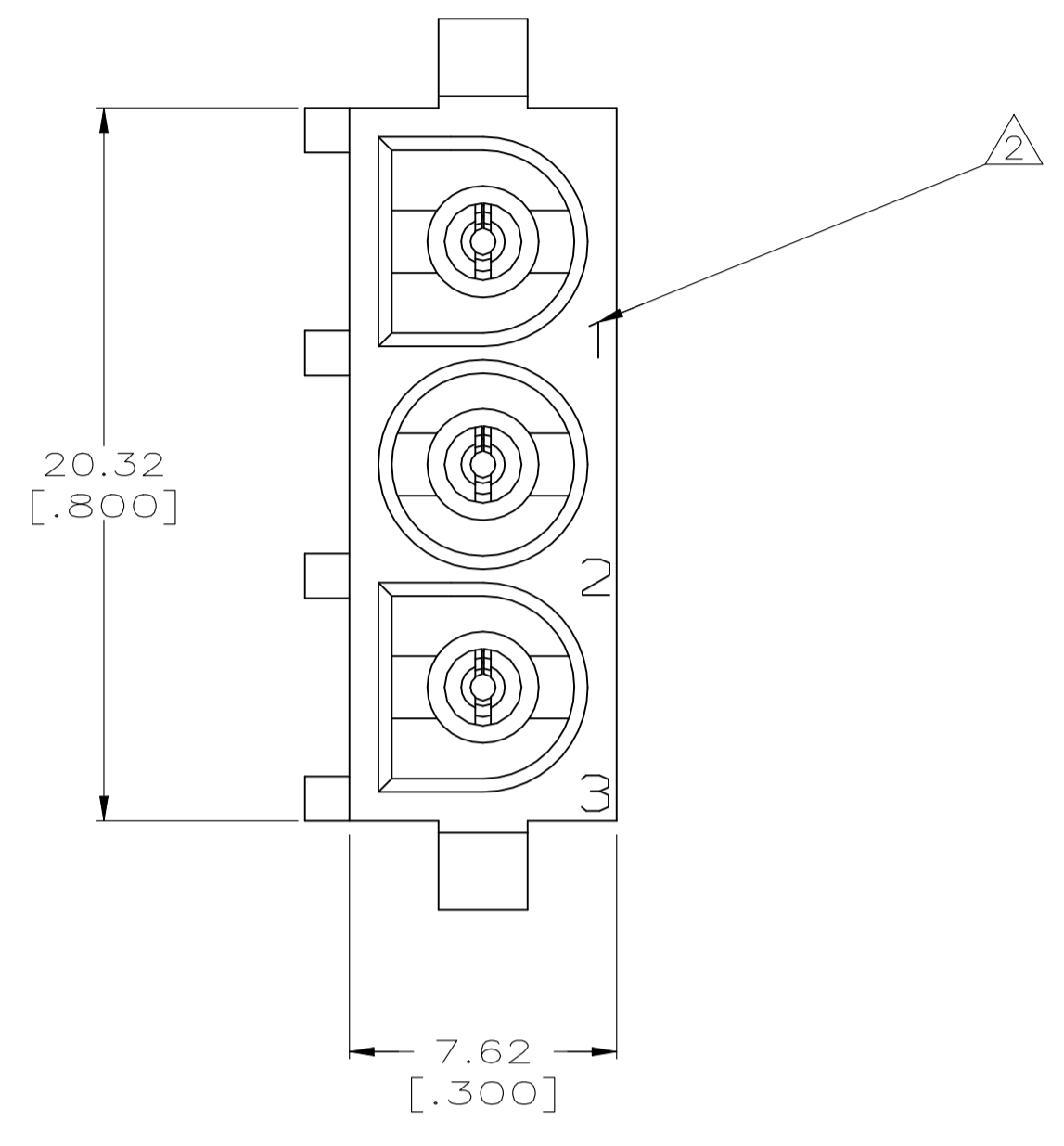
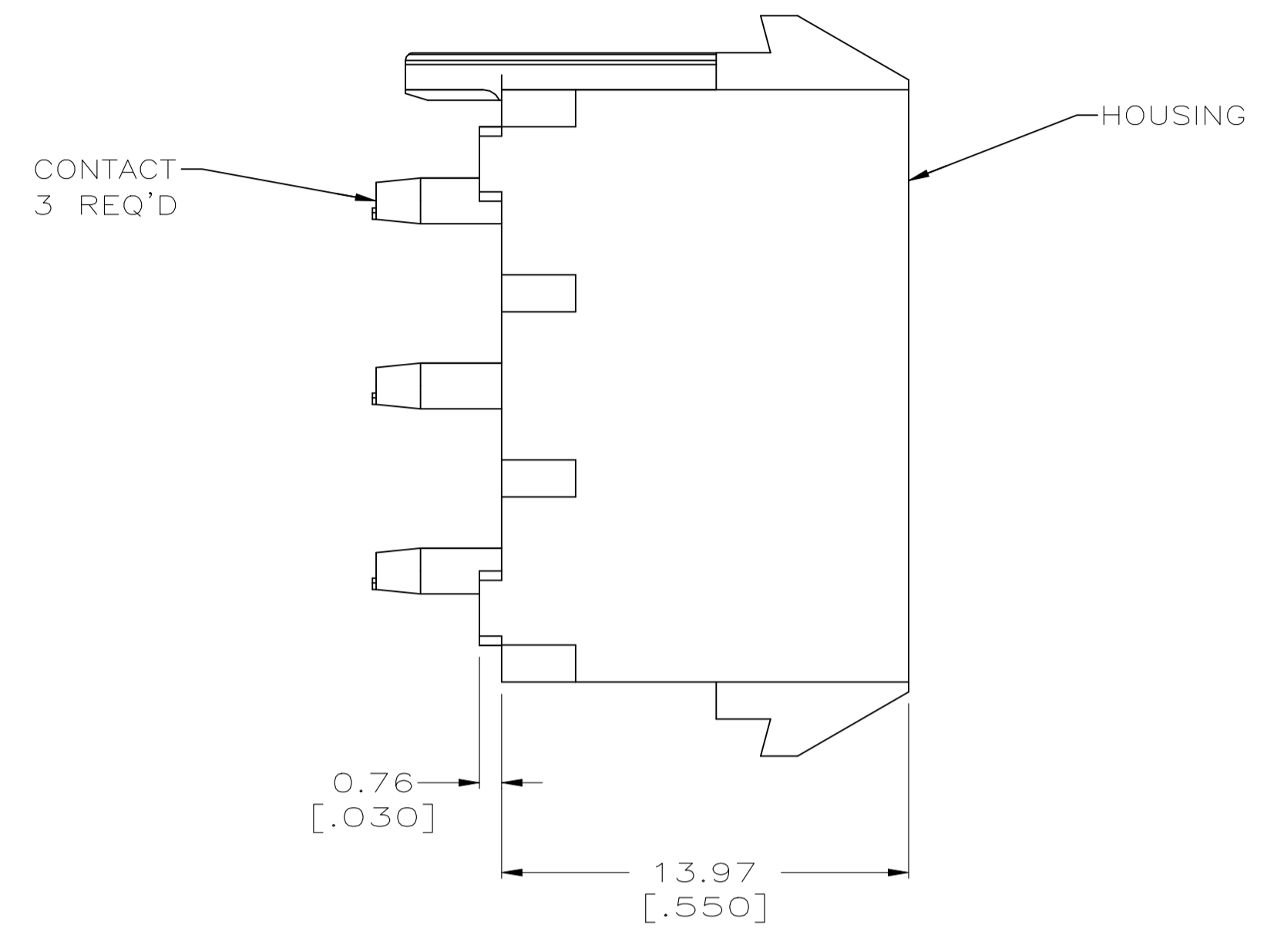
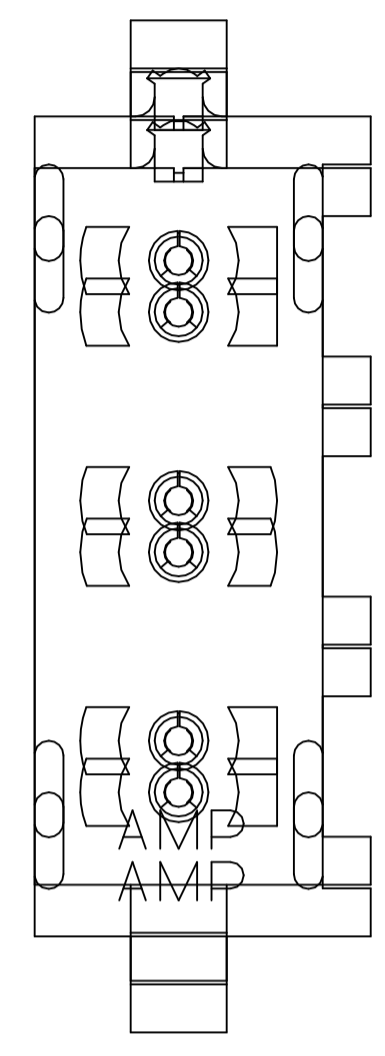


REVISIONS					
REV	DATE	DESCRIPTION	BY	CHK	APP'D
L1	21JUL2022	REVISED PER ECR-21-118222	JP	VS	

- PARTS COMPLY TO AMP SOLDERABILITY SPECIFICATION 109-11-3.
- △ CIRCUIT IDENTIFICATION CHARACTERS ARE ADJACENT TO THE INDICATED CAVITIES, BUT LOCATION AND ORIENTATION MAY DIFFER FROM PRINT.
- DIMENSIONS IN BRACKETS ARE IN INCHES.
- DIMENSIONS SHOWN REPRESENT PRODUCT IN DRY CONDITION. ADDITIONAL 2% GROWTH DUE TO END USE LOCATION MOISTURE ABSORPTION MAY OCCUR AND SHOULD BE ACCOUNTED FOR.



PHOSPHOR BRONZE, PRE-TIN	NYLON, UL94V-2,NATURAL	641965-1
PIN CONTACT MATERIAL AND FINISH		HOUSING MATERIAL
PART NO		
THIS DRAWING IS A CONTROLLED DOCUMENT.		
DIMENSIONS: mm TOLERANCES UNLESS OTHERWISE SPECIFIED: 0 PLC ± - 1 PLC ± - 2 PLC ± 0.13 [.005] 3 PLC ± - 4 PLC ± - ANGLES ± 0° 30'		BIN L McEACHIN 07-JAN-2000 CHK K COBLE 07-JUN-2000 APVD K COBLE 07-JUN-2000 NAME PRODUCT SPEC APPLICATION SPEC SIZE CAGE CODE DRAWING NO WEIGHT A1 00779 C=641965 CUSTOMER DRAWING
MATERIAL SEE TABLE FINISH SEE TABLE		TE Connectivity PIN HEADER ASSEMBLY, POLARIZED,3 CIRCUIT UNIVERSAL MATE-N-LOK SCALE 5:1 SHEET 1 OF 1 REV L1

