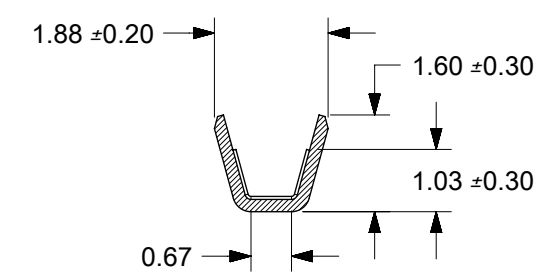
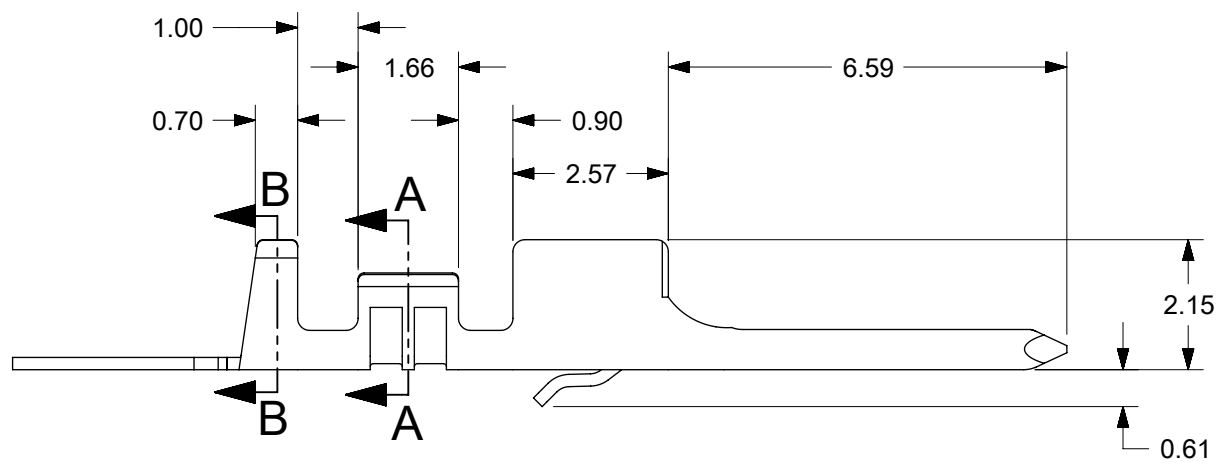
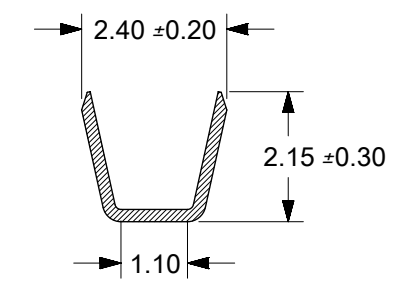


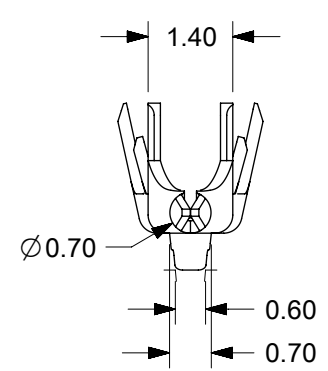
- NOTES:
1. MATERIAL: PHOSPHOR BRONZE ALLOY
 2. PLATING: 2.50 μ m/100 μ in TIN OVERALL
OVER 1.25 μ m/50 μ in OVERALL NICKEL UNDERPLATING.
 3. PART CONFORMS TO PRODUCT SPECIFICATION PS-45579-001.
 4. TERMINAL FOR USE IN SPOX PLUG 45626.
 5. FOR TERMINAL ORIENTATION SEE DRAWING SD-45626-001.
 6. USE MOLEX EXTRACTION TOOL 63813-1400 TO REMOVE TERMINAL WITHOUT DAMAGE TO THE PLUG CORE. REMOVED TERMINAL IS NOT USABLE.
 7. CONTACT WIPE IN 45626-0001 HOUSING WHEN MATED TO 08-70-1045 TERMINAL IN 45579-0001 HOUSING:
STANDARD WIPE (ALL CIRCUITS EXCEPT CKT 1) 2.28mm +0.23/-0.25
FIRST-MAKE / LAST BREAK (CIRCUIT 1) 3.28mm +0.24/-0.26
TOLERANCE CALCULATED BY ROOT MEAN SQUARE METHOD (RMS)



SECTION A-A



SECTION B-B



| | | | | | | | | | |
|---|--|--------|--|------------------------|--|------------|--|--|--|
| THIS DRAWING CONTAINS INFORMATION THAT IS PROPRIETARY TO MOLEX ELECTRONIC TECHNOLOGIES, LLC AND SHOULD NOT BE USED WITHOUT WRITTEN PERMISSION | | | | | | | | | |
| DIMENSION UNITS | | SCALE | | CURRENT REV DESC: | | | | molex | |
| MM | | 8:1 | | EC NO: 625546 | | | | | |
| GENERAL TOLERANCES (UNLESS SPECIFIED) | | | | DRWN: ABABU01 | | 2017/06/30 | | 0.70MM SPOX MALE CRIMP PIN TERMINAL 22-24AWG | |
| 4 PLACES | | ± | | CHK'D: ISHWARG | | 2019/10/18 | | PRODUCT CUSTOMER DRAWING | |
| 3 PLACES | | ± | | APPR: ISHWARG | | 2019/10/18 | | DOCUMENT NUMBER | |
| 2 PLACES | | ± 0.13 | | INITIAL REVISION: | | 2004/02/26 | | SD-45627-002 | |
| 1 PLACE | | ± 0.25 | | DRWN: KSTILES | | 2004/05/18 | | DOC TYPE DOC PART REVISION | |
| 0 PLACES | | ± | | APPR: JCOMERCI | | 2004/05/18 | | PSD 001 B | |
| ANGULAR TOL ± 0.5° | | | | THIRD ANGLE PROJECTION | | DRAWING | | SERIES | |
| DRAFT WHERE APPLICABLE MUST REMAIN WITHIN DIMENSIONS | | | | B-SIZE | | 45627 | | MATERIAL NUMBER | |
| | | | | CUSTOMER | | IBM | | SHEET NUMBER | |
| | | | | | | | | 1 OF 1 | |