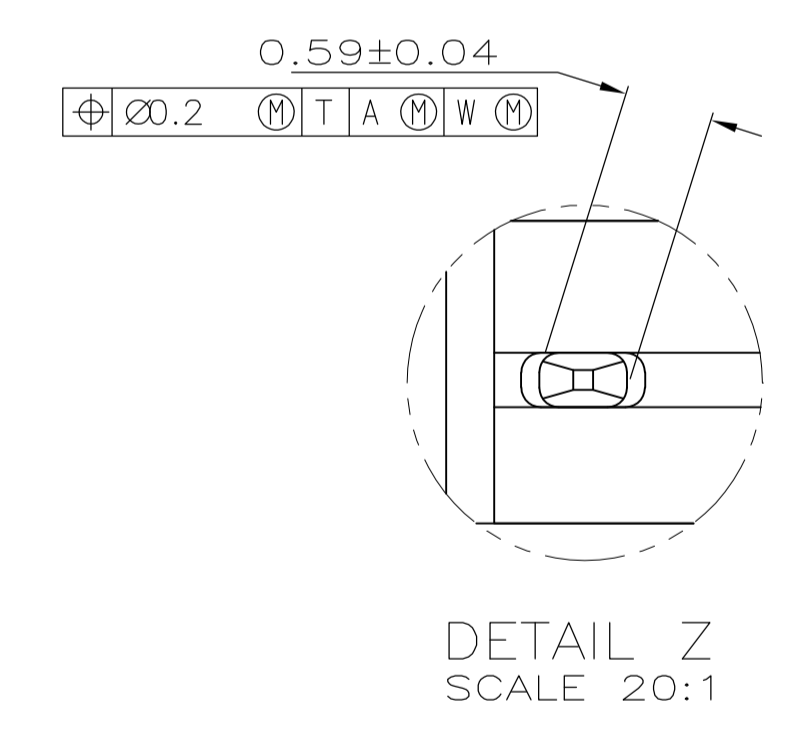
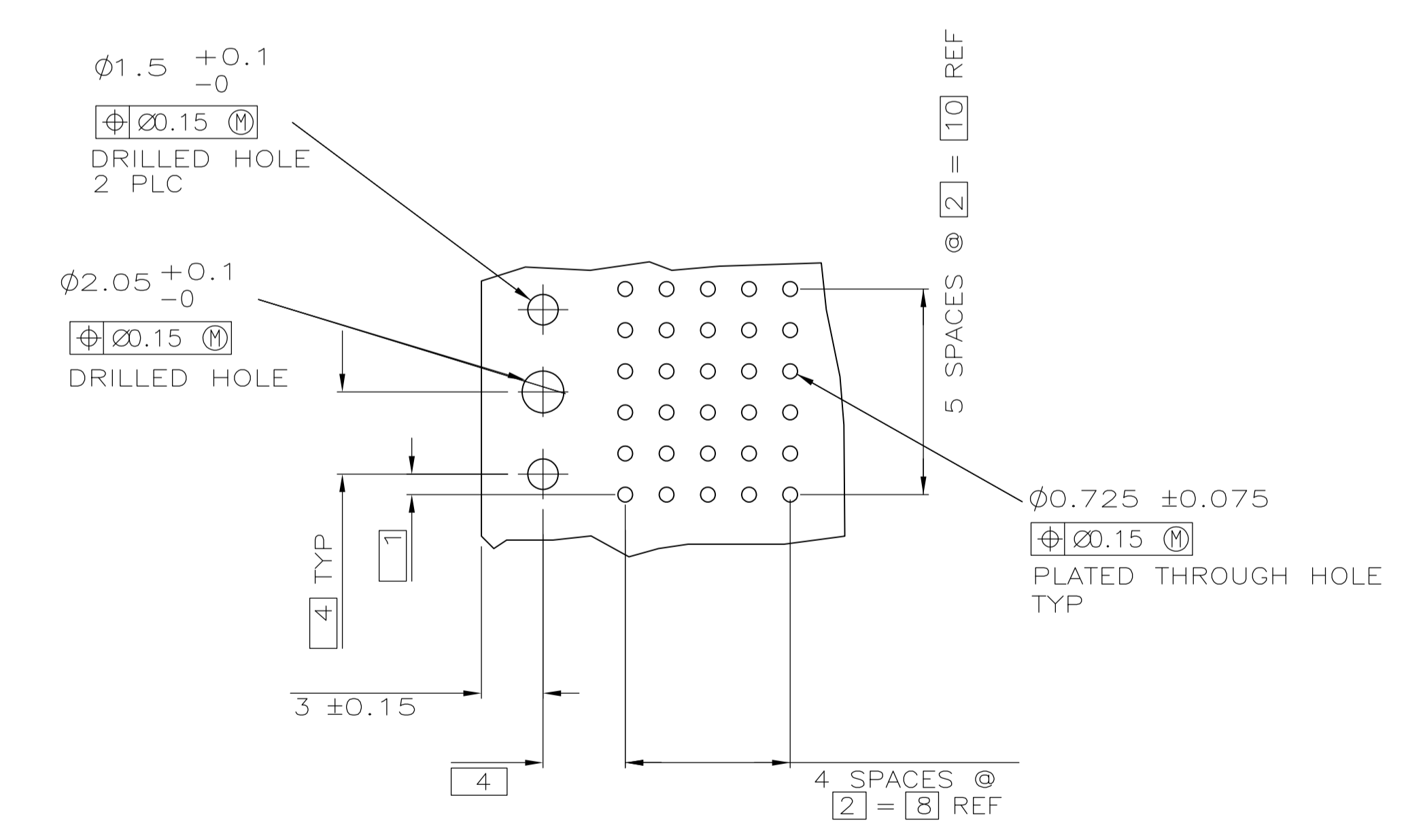
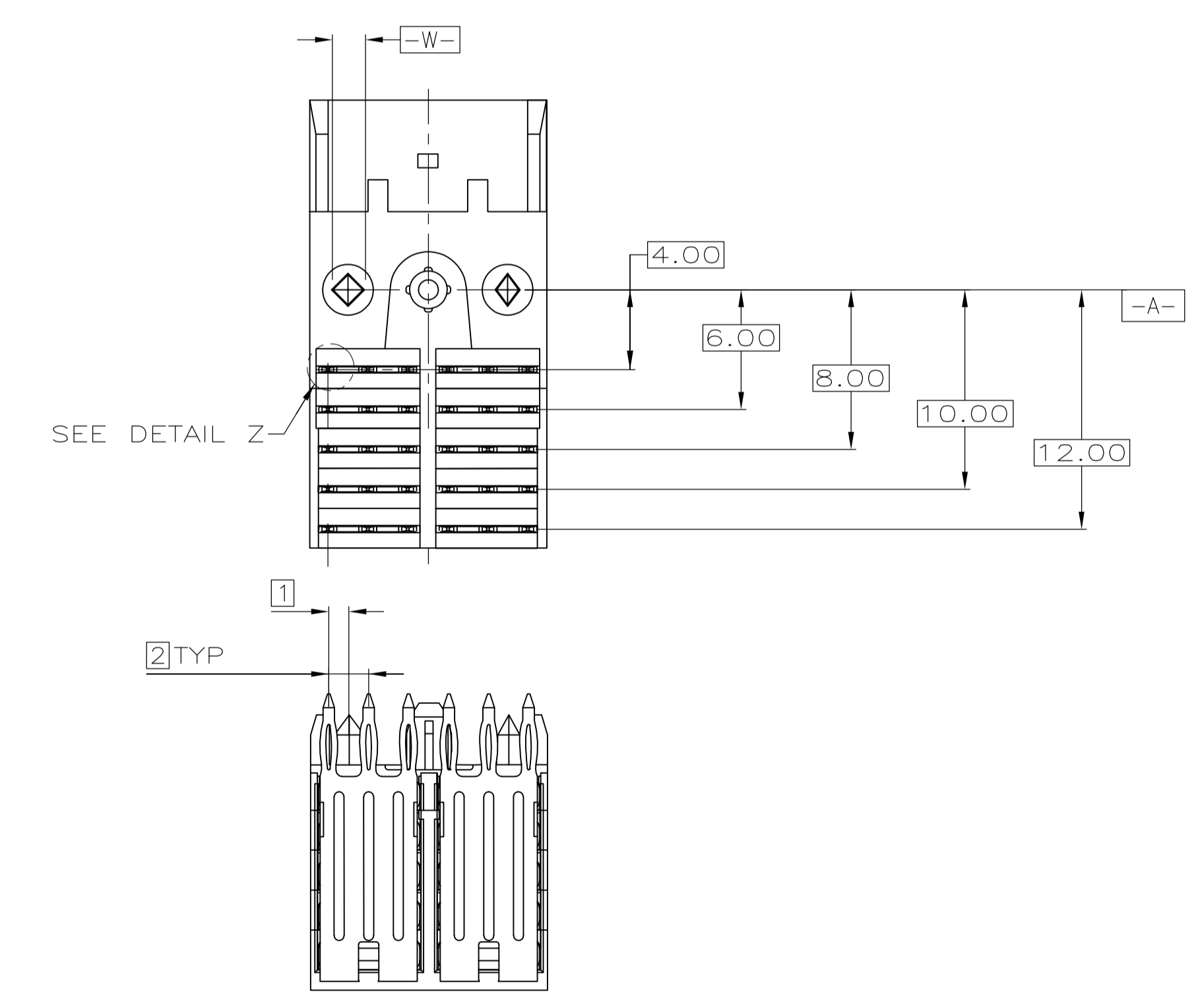
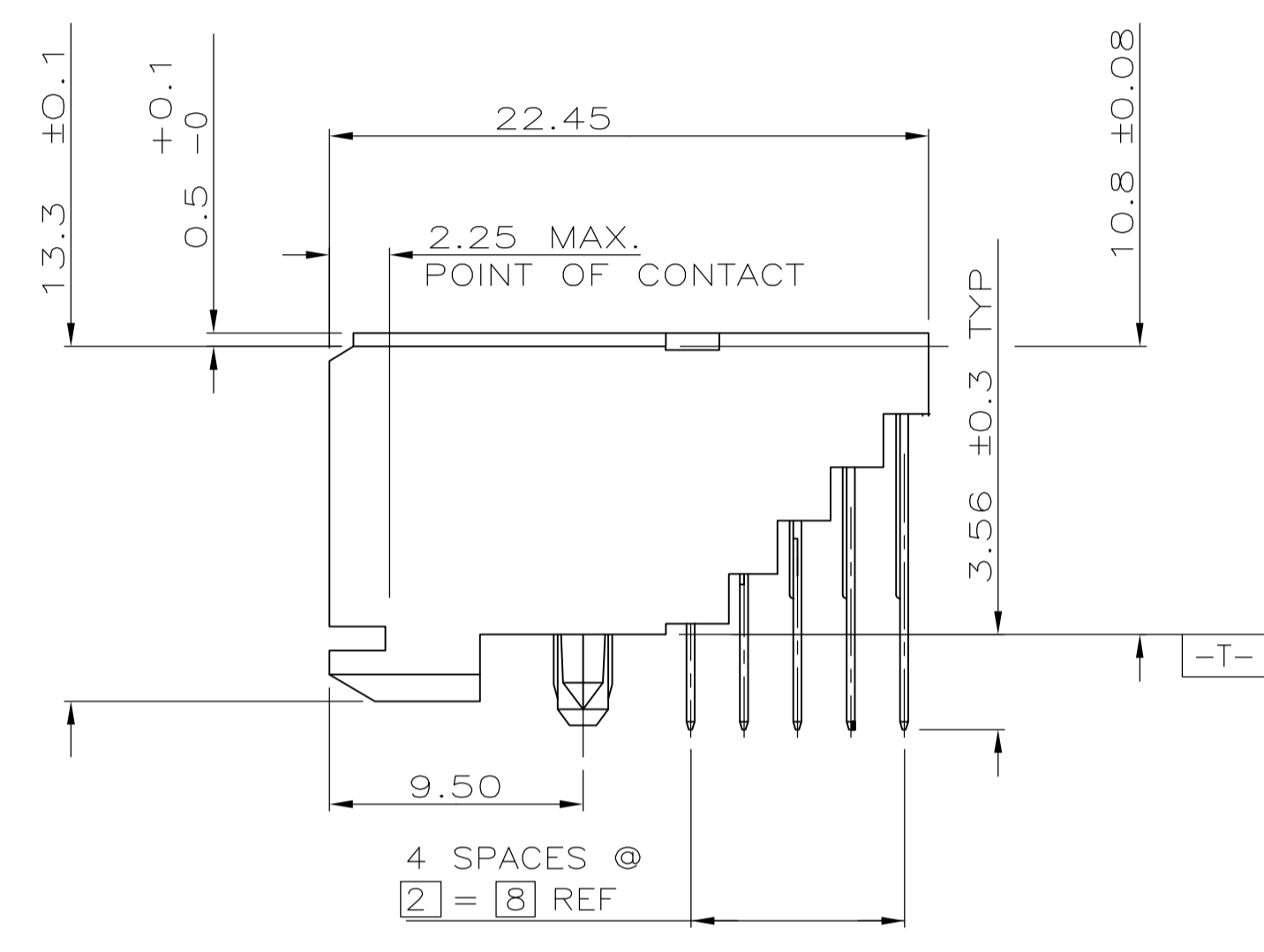
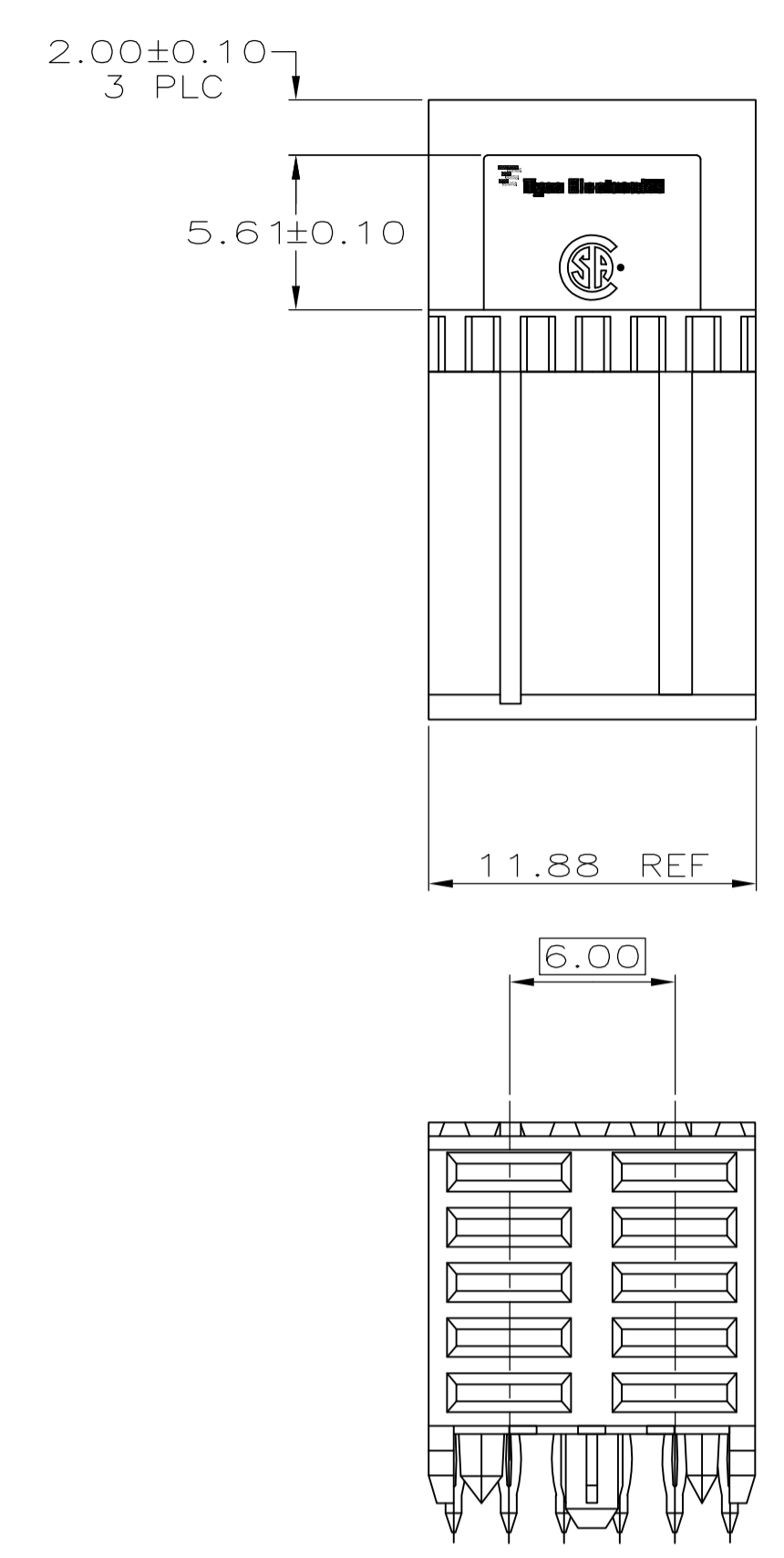


LOC		DIST		REVISIONS			
P	LTR	DESCRIPTION	DATE	DWN	APVD		
AD	00						
01		REVISED PER ECO-08-009182	22APR08	DH	AS		



- 1 HOUSINGS MATERIAL: LIQUID CRYSTAL POLYMER.
- 2 CONTACT MATERIAL: COPPER ALLOY
- 3 CONTACT FINISH:(D)
 UNDERPLATE (ENTIRE CONTACT):
 0.00127 MIN NICKEL PER SAE-AMS-QQ-N-290
 ON MATING SURFACES:
 FLASH GOLD PER ASTM B 488, OVER
 0.00076 MIN PALLADIUM-NICKEL OVER UNDERPLATE, OR
 0.00076 MIN GOLD PER ASTM B 488 OVER UNDERPLATE.
 ON LEADS:
 0.00127 MIN MATTE TIN PER ASTM B 545 OVER UNDERPLATE.
 LUBRICATION (MIN MATING SURFACES):
 SURFACE CONDITIONER AFTER PLATING.

RECOMMENDED CIRCUIT PATTERN
 PER IPC-D300 TYPE II, CLASS C
 (COMPONENT SIDE)

3	10	5536649-1
FINISH	NO OF POSN	PART NUMBER

THIS DRAWING IS A CONTROLLED DOCUMENT.		DIN	2-18-98	Tyco Electronics Corporation	
DIMENSIONS: mm		CHK	3-5-98	Harrisburg, Pa 17105-3608	
TOLERANCES UNLESS OTHERWISE SPECIFIED:		W	MILLHIMES	NAME	
0 PLC	± -	W	MILLHIMES	ASSEMBLY, RECEPTACLE, 5 ROW, POWER MODULE, PRESS FIT LEAD, 3.56mm LEAD LENGTH, Z-PACK 2mm FB	
1 PLC	± -	W	MILLHIMES	APPLICATION SPEC	
2 PLC	± 0.13 [.005]	W	MILLHIMES	SIZE	
3 PLC	± 0.013	W	MILLHIMES	CAGE CODE	
4 PLC	± - # 2'	W	MILLHIMES	DRAWING NO	
ANGLES	± - # 2'	W	MILLHIMES	RESTRICTED TO	
MATERIAL	FINISH	WEIGHT		A1 00779 C=5536649	
CUSTOMER DRAWING		SCALE	4:1	SHEET	1 OF 1