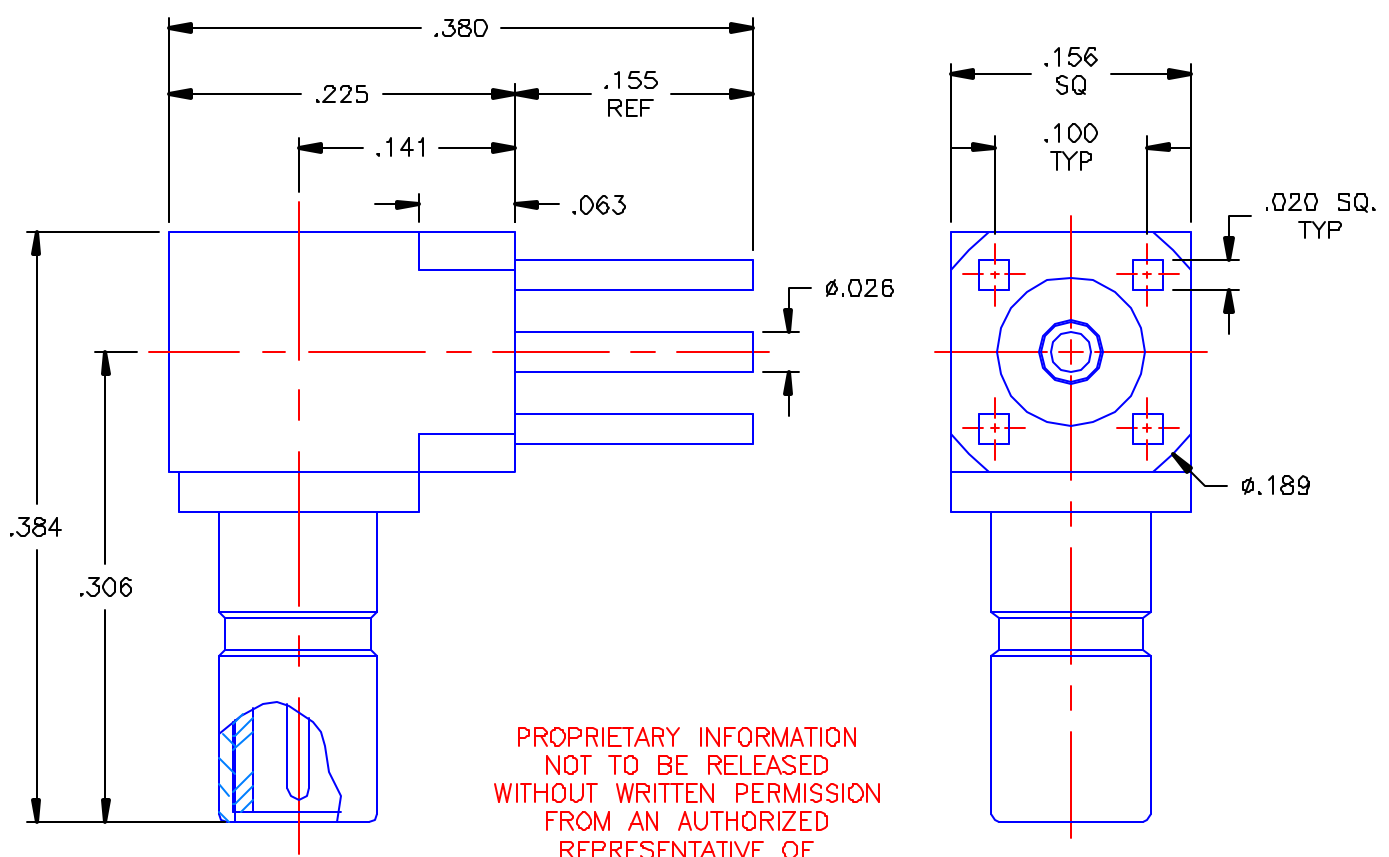


REVISIONS			
REV	DESCRIPTION	DATE	APPROVED
A	ECO #5817	04/22/05	E.C.C.



PROPRIETARY INFORMATION  
 NOT TO BE RELEASED  
 WITHOUT WRITTEN PERMISSION  
 FROM AN AUTHORIZED  
 REPRESENTATIVE OF  
 APPLIED ENGINEERING PRODUCTS


NOTES:

MATERIALS:

1. INSULATORS = VIRGIN WHITE TEFLON PER ASTM D1710, GRADE 1, TYPE I, CLASS "B".
2. CONTACTS = BERYLLIUM COPPER PER ASTM B196, ALLOY C17300, TEMPER TD04.
3. ALL OTHER METAL PARTS = BRASS PER ASTM B16, ALLOY C36000, TEMPER H02.

FINISHES:

1. CONTACTS = GOLD PLATE PER MIL-G-45204, TYPE II, CLASS 1, GRADE C, OVER .00010 TO .00020 STRESS FREE SULFAMATE NICKEL PER QQ-N-290.
2. ALL OTHER METAL PARTS = GOLD PLATE PER MIL-G-45204, TYPE II, CLASS 0, GRADE C, OVER .00010 TO .00020 COPPER STRIKE PER MIL-C-14550.

UNLESS OTHERWISE SPECIFIED DIMENSIONS ARE IN INCHES TOLERANCES ON		DWN: E.C.C.	DATE 04/21/05	 <b>APPLIED ENGINEERING PRODUCTS</b> 104 John W. Murphy Dr New Haven, CT 06513
		CHKD: A.D.M.	DATE 04/21/05	
DECIMAL	ANGLE	APVD: D.J.C.	DATE 04/22/05	
		MATERIALS & NOTES:  SEE NOTES		
REFERENCE:		SIZE A	FSCM NO. 19505	DWG NO. 7210-1511-000
ORIGINATOR: D.N. DATE: 11/10/92		SCALE 8:1		REV A
				SHEET 1 OF 1

7210-1511-000