

DDS Series Micro Mini Thru-hole Detect Switches



Features/Benefits

- Vertical or horizontal actuation
- 2mm overtravel—Ideal for detector applications
- Low actuations force (less than 40 grams)
- RoHS compliant and compatible

Typical Applications

- Detect the presence of a mechanical device
- Medical devices
- Consumer electronic devices

Specifications

CONTACT RATING: 0.1A @ 30 VDC.
 MECHANICAL & ELECTRICAL LIFE: 50,000 cycles.
 CONTACT RESISTANCE: 150 m Ω max. initial.
 INSULATION RESISTANCE: 100 M Ω min. @ 100 VDC.
 OPERATING TEMPERATURE: -40°C to +85°C.
 DIELECTRIC STRENGTH: 100 volts AC @ 60 Hz.
 PACKAGING: Bulk.

Materials

HOUSING: P.P.S.
 ACTUATOR: PA66
 MOVABLE CONTACT: Tin bronze, silver plated.

NOTE: Specifications and materials listed above are for switches with standard options. For information on specific and custom switches, consult Customer Service Center.

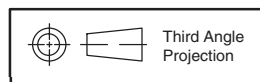
How To Order

Part number list is shown below. For individual part details, please refer to the following pages.

Part Number (Part Description)	Product Details
DDS001	Micro mini thru-hole detect switches top actuated
DDS002	Micro mini thru-hole detect switches side actuated right
DDS003	Micro mini thru-hole detect switches side actuated left
DDS004	Micro mini SMT detect switches top actuated



Detect



Dimensions are shown: mm

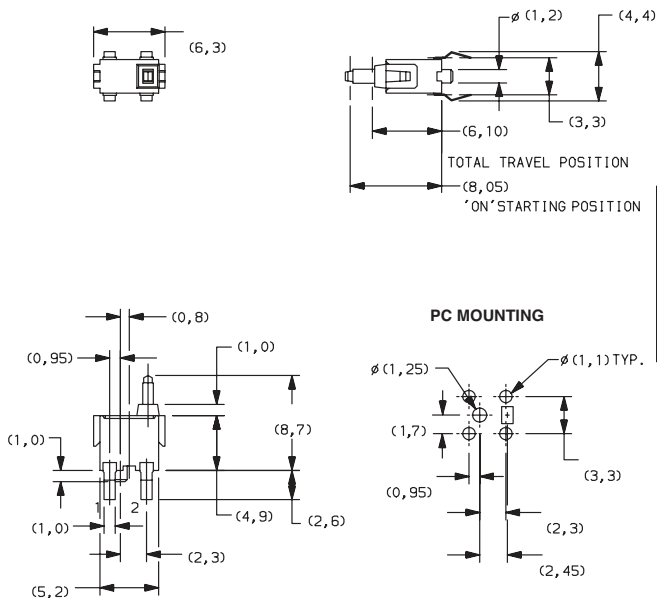
Specifications and dimensions subject to change

DDS Series Micro Mini Thru-hole Detect Switches

Complete part numbers for DDS Series Switches are shown below.

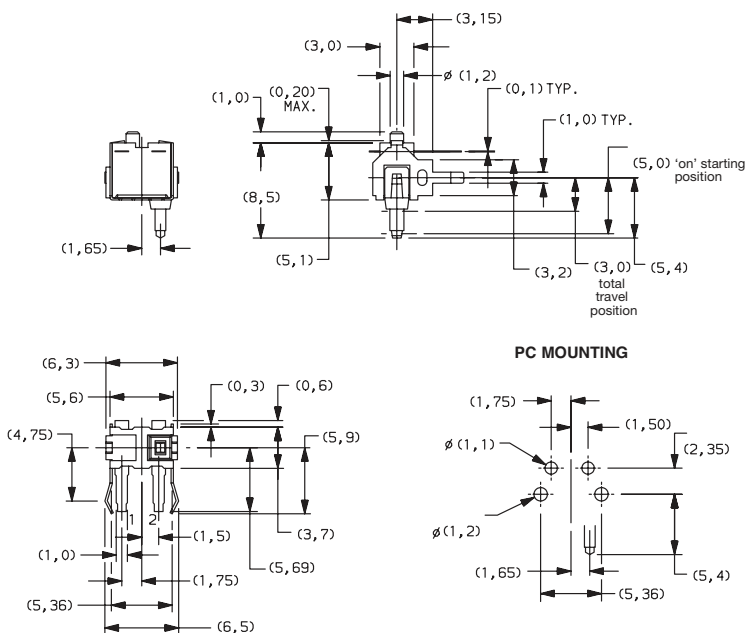


**DDS001
SPST**

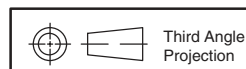


PART NUMBER	DESCRIPTION	SCHEMATIC
DDS001	Vertical Actuator	 SPST N.O.

PART NUMBER	DESCRIPTION	SCHEMATIC
DDS002	Right angle, actuator right	 SPST N.O.



**DDS002
SPST**




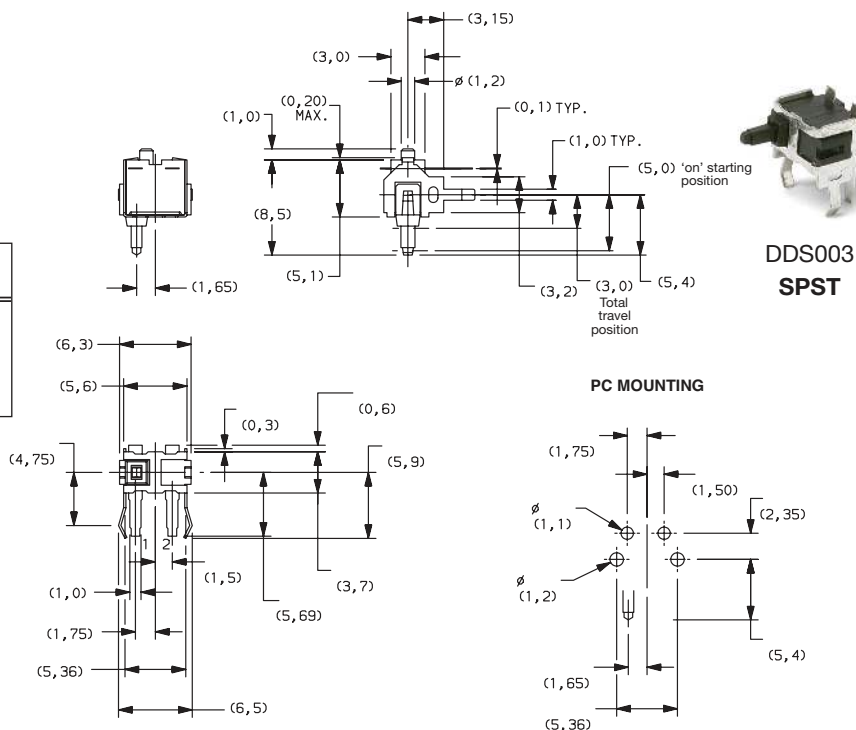
Third Angle Projection

Dimensions are shown: mm
Specifications and dimensions subject to change

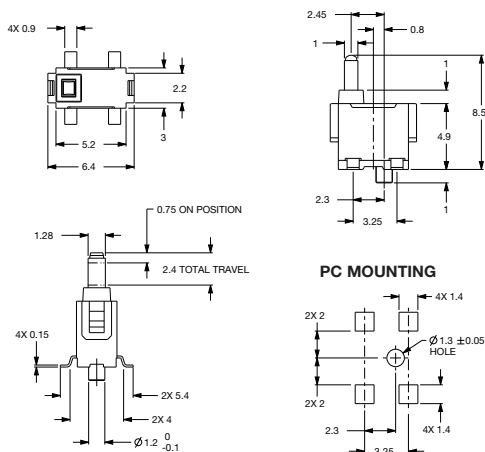


DDS Series Micro Mini Thru-hole Detect Switches


PART NUMBER	DESCRIPTION	SCHEMATIC
DDS003	Right angle, actuator left	
		SPST N.O.

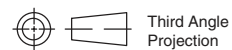


**DDS003
SPST**



**DDS004
SPST**

PART NUMBER	DESCRIPTION	SCHEMATIC
DDS004	Vertical actuator	
		SPST N.O.



Third Angle
Projection

Dimensions are shown: mm
Specifications and dimensions subject to change