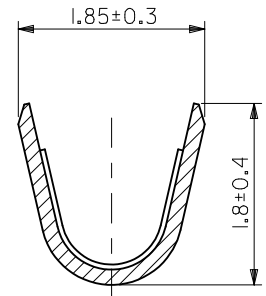
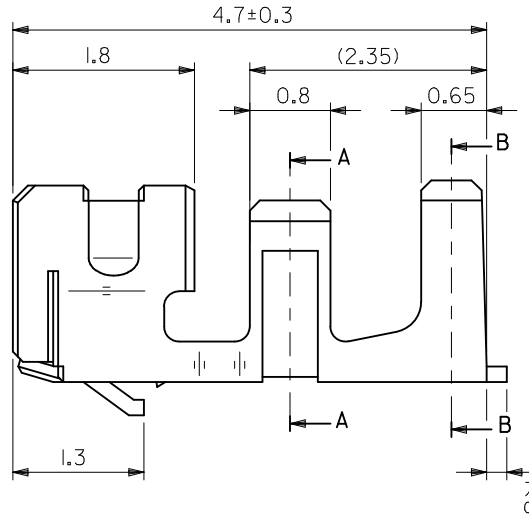
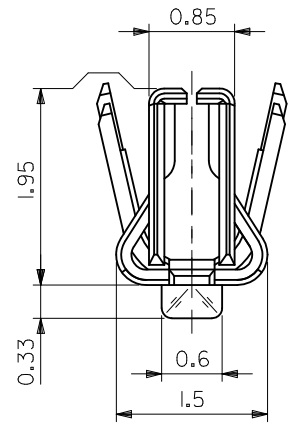


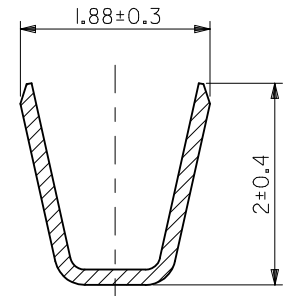
トレードマーク
TRADE MARK
(裏面に刻印)
(STAMP IN THE BACK)

注記
NOTES

- 材質：リン青銅、t = 0.152
MATERIAL : PHOSPHOR BRONZE, t = 0.152
- メッキ仕様
PLATING
金メッキ : 0.1µm MIN.
GOLD : 0.1µm MIN.
ニッケルメッキ : 1.5µm MIN. (下地メッキ)
NICKEL : 1.5µm MIN. (UNDER PLATING)
- 適用ハウジング : 54992-09**, 502351-**00
APPLICABLE HOUSING : 54992-09**, 502351-**00
- ELV 及び RoHS 適合品
ELV AND RoHS COMPLIANT.



断面 A-A
SECTION A-A



断面 B-B
SECTION B-B

バラ状 LOOSE	56161-8181
連鎖状 CHAIN	56161-8081
端子形状 FORM	オーダー番号 ORDER No.

CONNECTOR SERIES No. 56161-8*81

材料 MATERIAL	注記参照 SEE NOTES
仕上げ FINISH	注記参照 SEE NOTES
適用電線範囲 WIRE RANGE	AWG #22~#26
被服外径範囲 INSURATION RANGE	φ1.4 MAX.

REVISED EC NO.: J2011-0785 DRWK:KAWASHIO CHKD:KASAKAWA APPR:NUKITA	2010/12/08	DESCRIPTION GENERAL TOLERANCES (UNLESS SPECIFIED)	10 UNDER	±0.2
	2010/12/09		10 OVER 30 UNDER	±0.25
	2010/12/09		30 OVER	±0.3
			ANGULAR	±3 °
A			DRAFT WHERE APPLICABLE MUST REMAIN WITHIN DIMENSIONS	

DIMENSION STYLE MM ONLY		SCALE 20:1	DESIGN UNITS METRIC	THIRD ANGLE PROJECTION
DRAWN BY KKOBAYASHI	DATE 2001/10/05	TITLE SMEC (SERVO MOTOR ENCODER CONN.) CRIMP RECEPTACLE		
CHECKED BY NMATSUURA	DATE 2001/10/05	MOLEX INCORPORATED		
APPROVED BY YOITO	DATE 2001/10/05	MATERIAL NO. SEE CHART	DOCUMENT NO. SD-56161-002	SHEET NO. 1 OF 1
THIS DRAWING CONTAINS INFORMATION THAT IS PROPRIETARY TO MOLEX INCORPORATED AND SHOULD NOT BE USED WITHOUT WRITTEN PERMISSION				