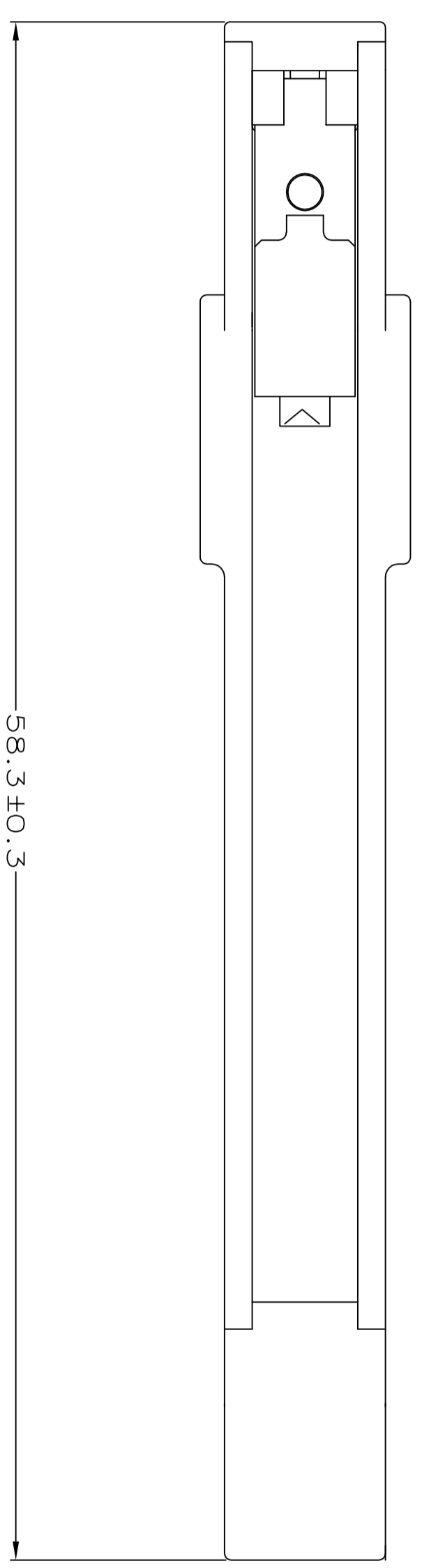
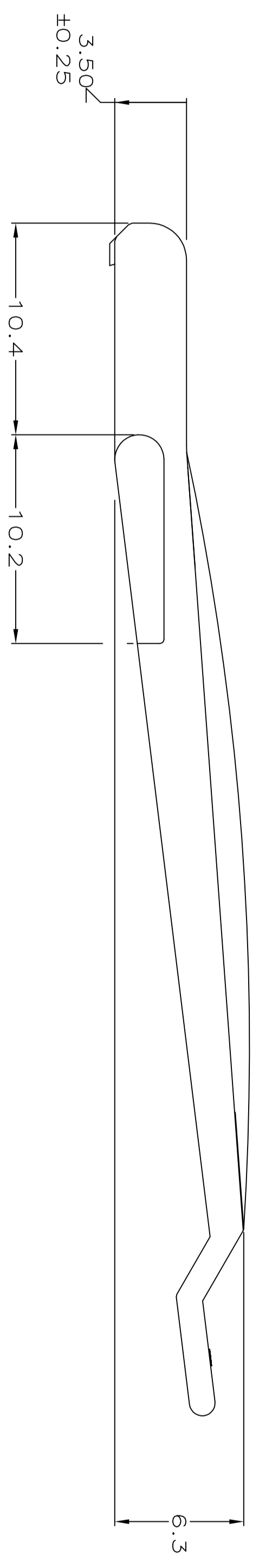
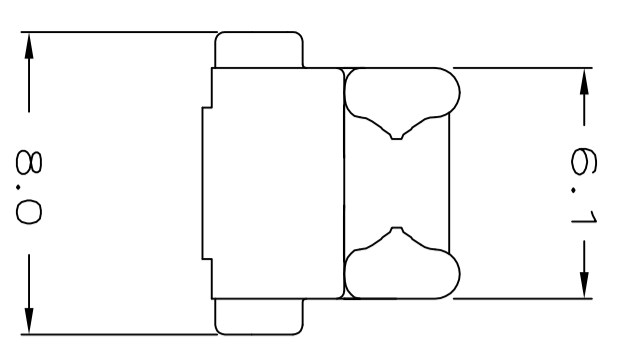


REVISONS		Loc	DIST	P	TR	DESCRIPTION	DATE	DNM	APPD
AG	0					REVISED ECO-14-014737	29SEP14	OL	SZ

1. USED IN AMP-DUAC/PL™ RECEPTACLE HOUSINGS. ONE REQUIRED PER HOUSING.
 2. INSTALL LATCH ASSEMBLY AFTER CUSTOMER SUPPLIED BACKSHELL. (USE OF BACKSHELL IS REQUIRED).
 3. LATCH ASSEMBLY AVAILABLE WITH STANDARD LEVER ARM, 794150-1.
- 4 MATERIAL: LATCH ARM - PBT, GLASS REINFORCED
 COLOR - NATURAL
 SPRING - STAINLESS STEEL.
- 5 MATERIAL: LATCH ARM - PBT, GLASS REINFORCED
 COLOR - BLURPL
 SPRING - STAINLESS STEEL.



5	794149-2
4	794149-1
PART NUMBER	

THIS DRAWING IS A CONTROLLED DOCUMENT.		DNM	8-15-97	AMP		AMP Incorporated	Harrisburg, PA 17105-3608
DIMENSIONS:		CHK	8-15-97	LATCH ASSEMBLY, EXTENDED,			
TOLERANCES UNLESS OTHERWISE SPECIFIED:		APPD	8-15-97	AMP-DUAC/PL™ POWER CONNECTOR			
0	PLC			SIZE	A2	CAGE CODE	00779
1	PLC			DRAWING NO	794149		
2	PLC			RESTRICTED TO			
3	PLC						
4	PLC						
FINISH							
MATERIAL							
CUSTOMER DRAWING							

METRIC