



**RADIALL**  
Département COAXIAL

**NOTICE TECHNIQUE**  
TECHNICAL DATA

101. Rue Philibert Hoffmann  
Zone Industrielle Ouest  
93116 - ROSNY-SOUS-BOIS  
Téléphone : 854-80-40

TITRE

PR. DR. ECR. SOUD.  
CAB. .085

TITLE

BULKHEAD STRAIGHT JACK,  
SOLDER TYPE  
CAB. .085

**R121.316.000**

Série SUBRIM

NORMALISATION

IEC : \_\_\_\_\_  
CECC : \_\_\_\_\_

SPECIFICATIONS

MIL : \_\_\_\_\_

CABLES .085

CABLES

CARACTERISTIQUES

Impéd. caract. : 50 ohms : *Nominal imp.*  
Fréq. d'utilisat. : 0 - 18 GHz : *Freq. range*  
Vérif. impédance : : *Imped. test*  
Tension tenue : 750 V eff. : *Proof. voltage*

PROPERTIES

Catégorie climatique : -65/+125° C *Climatic range*  
Mouvement : { } *In. cont. motion*  
cont. cent.

CONSTRUCTION

Finition corps : Ni  
Finition cont. cent. : Au

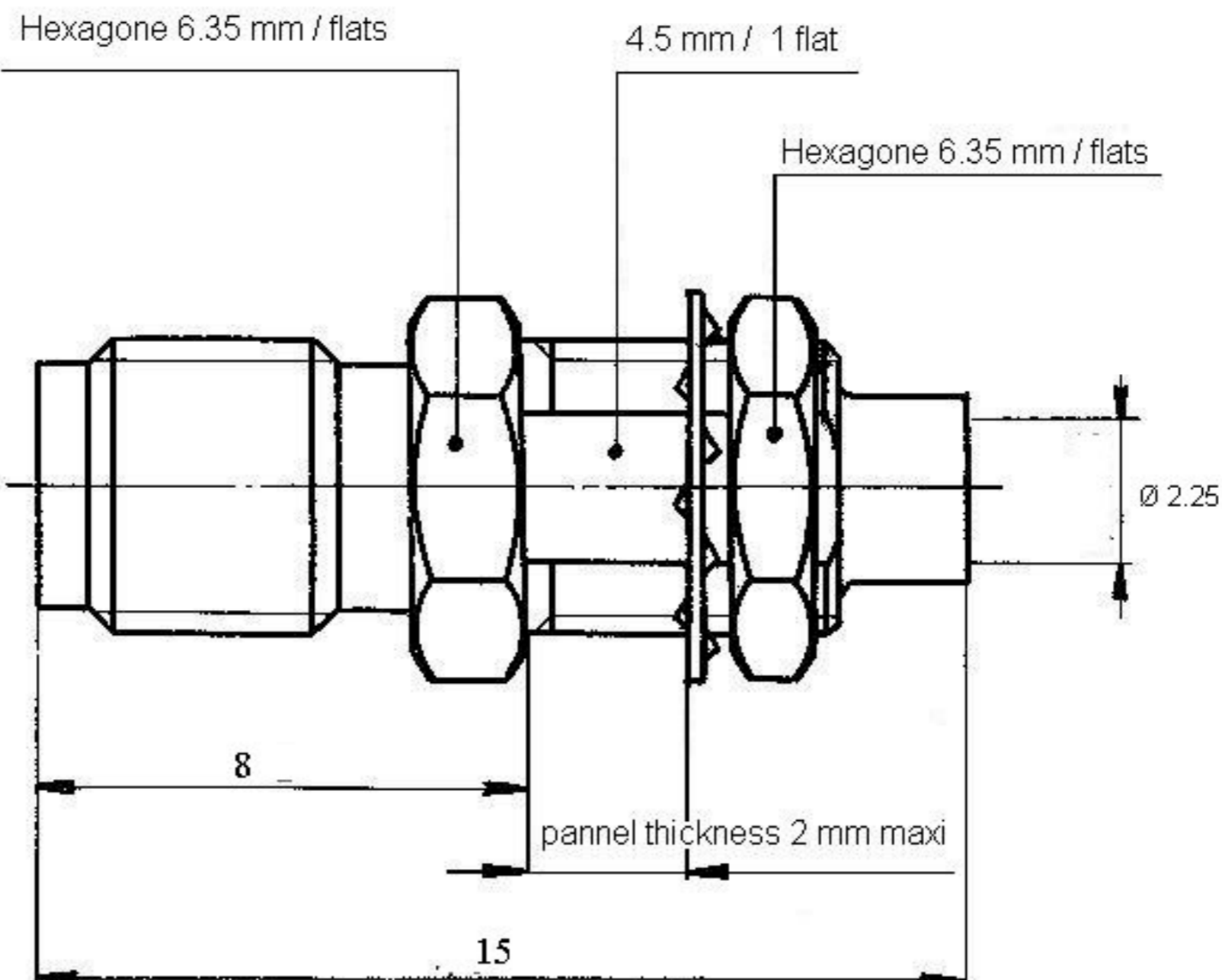
*Body finish* : Ni  
*Inner contact finish* : Au

Partie métallique : Inox  
Partie métal. élast. : Bronze

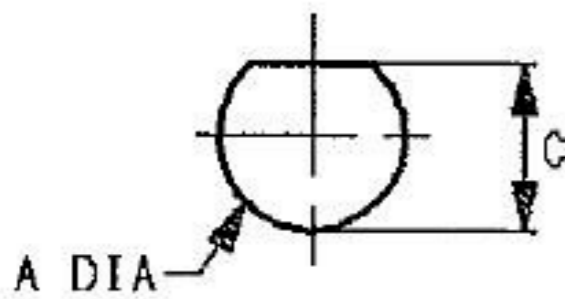
*metallic parts* : Stainless steel  
*metallic resilient parts* : Bronze

Isolant : PTFE  
Joint :

*Insulator* : PTFE  
*Gasket* :



MOUNTING HOLE



	MM		INCH	
	mini	maxi	mini	maxi
A	4.9	5	.193	.197
C	4.6	4.75	.181	.187

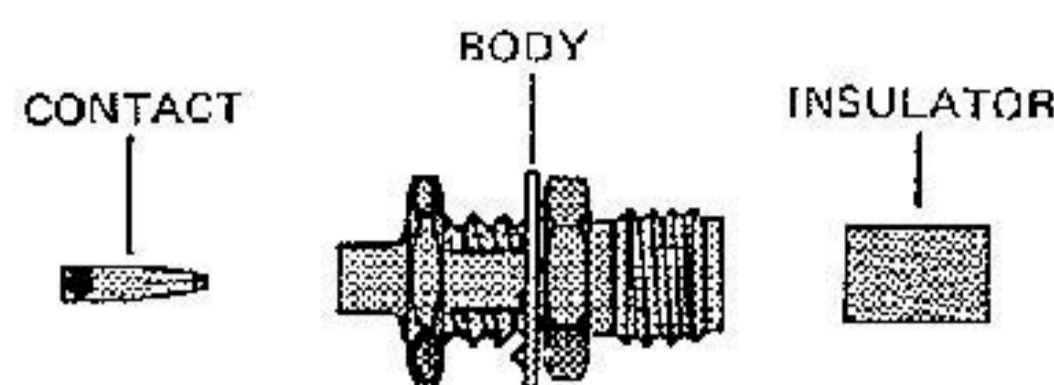
Dimensions en mm

DOSSIER D'ETUDE	Dessiné	Vérifié	MODIFICATIONS			
	NOM	Guérin	PÉRIÉ	VACHON		
80-102-002/1	DATE	01-07-80	16-07-80	0743		
1 / 1	VISA					

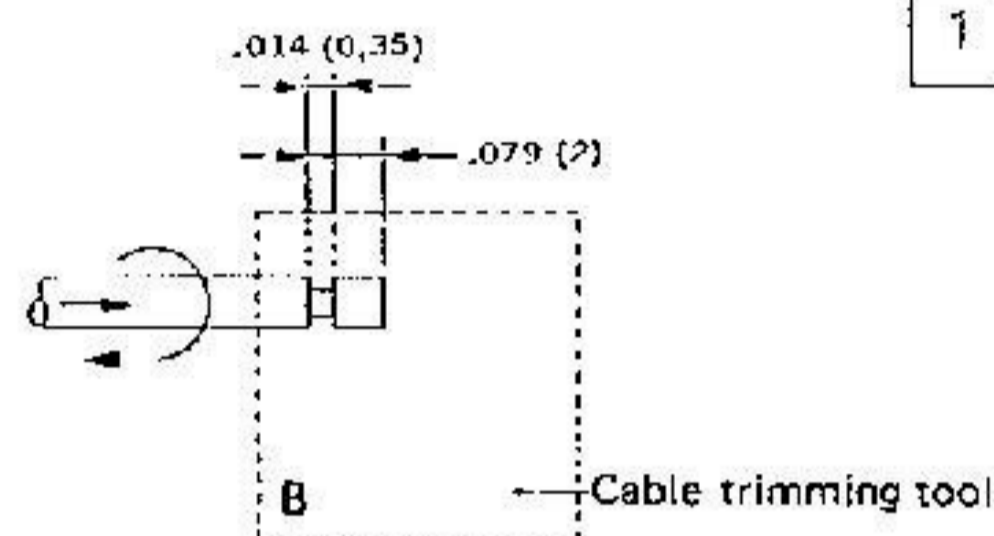
Ces renseignements sont donnés à titre indicatif. Dans le but constant d'améliorer nos produits, nous nous réservons le droit d'apporter toute modification jugée utile.



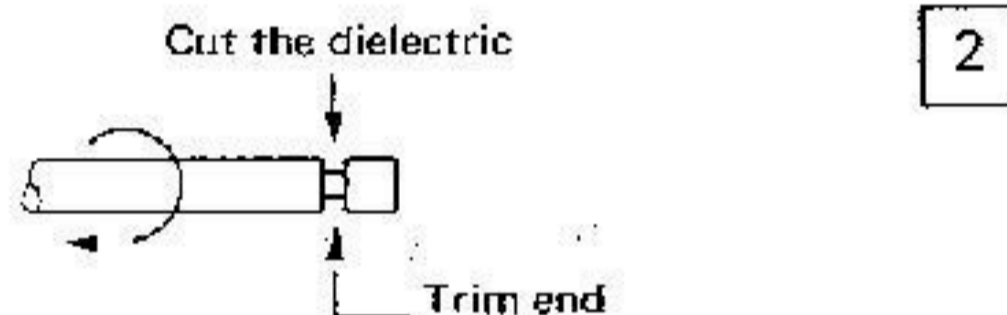
CONNECTOR	TOOLING	
R 121 316	Tool kit R 282 118	Item
	cable trimming tool	21
	assembly jig	10
	spacer	60
	positioner	70
	dielectric insert tool	31
	dielectric plunger	32



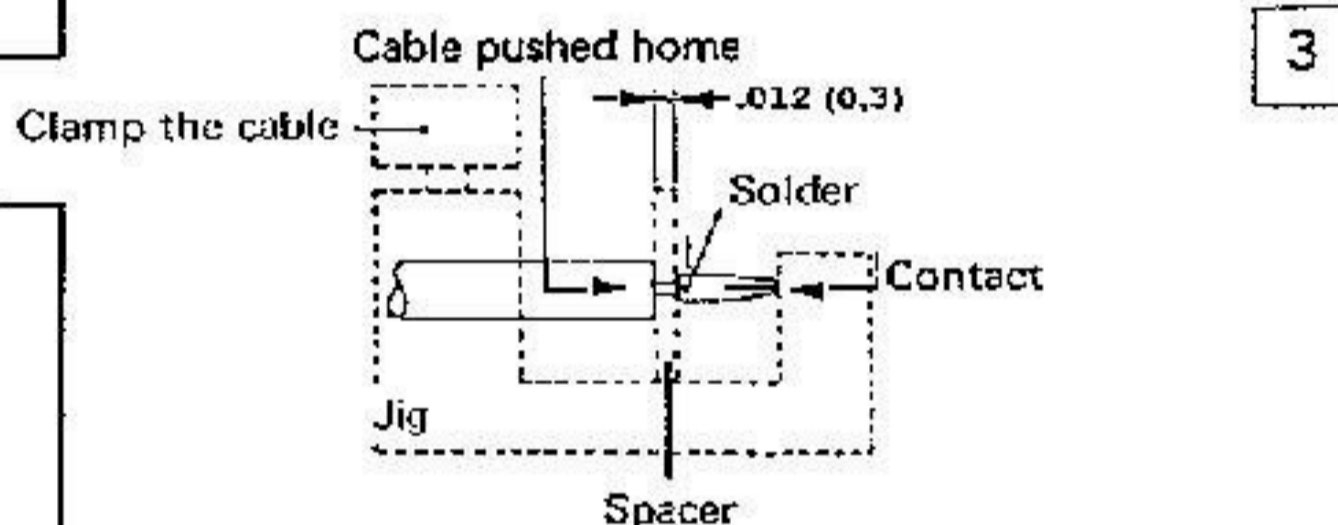
- 1-1 Insert the cable into end B of the cable trimming tool  
1-2 Saw through cable outer and into dielectric whilst turning the cable



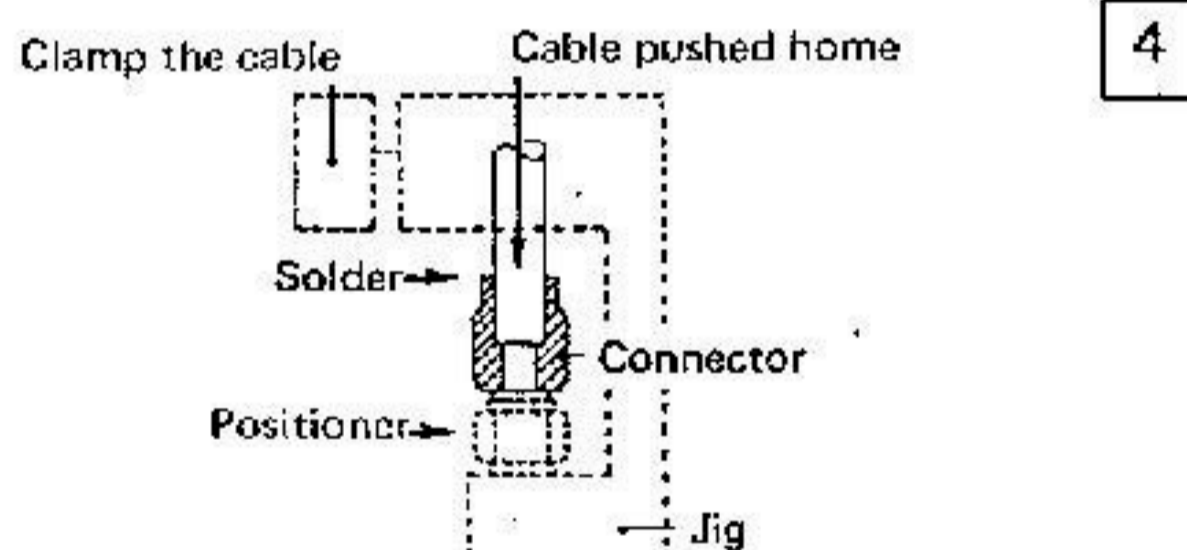
- 2-1 Cut through the dielectric and bare inner conductor  
2-2 Trim the end of the cable  
2-3 Inspect cable and clean free from all chips, foreign matter etc.



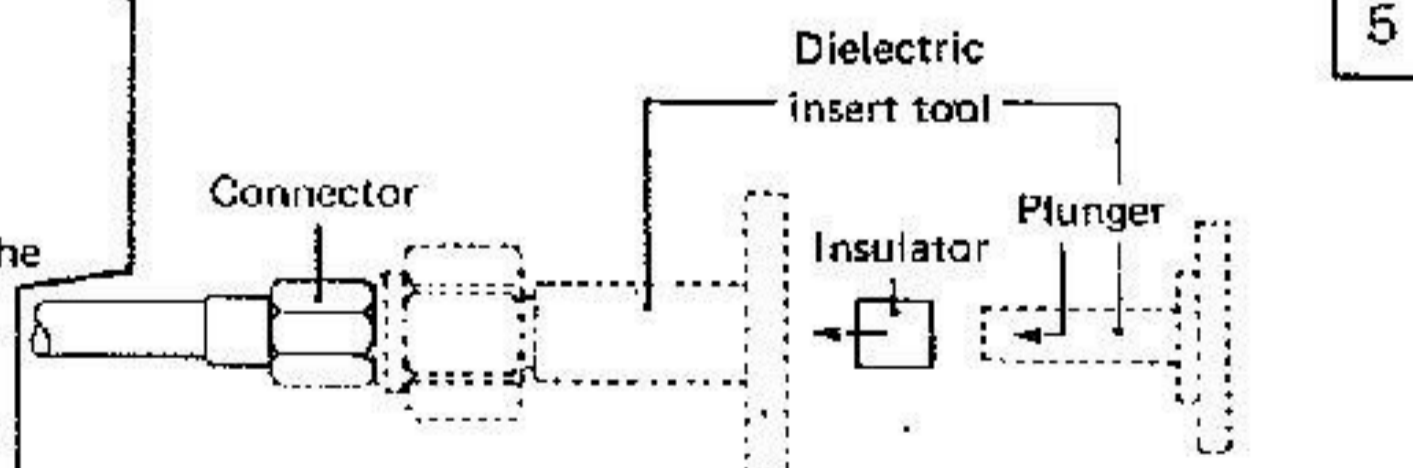
- 3-1 Place the cable into the assembly jig  
3-2 Position the contact and spacer as shown  
3-3 Solder the contact



- 4-1 After the sub-assembly has cooled, remove it from the jig  
4-2 Screw the body and positioner together  
Place cable into the body until the contact bottoms with the positioner and clamp the cable  
4-4 Put 3 rings of solder around the cable and solder the body onto the semi-rigid



- 5-1 After the sub-assembly has cooled, remove it from the jig  
5-2 Screw the dielectric insert tool into the body and insert the insulator with the plunger



ISSUE	REVISION No	DESCRIPTION	BY	DATE

dated on 8 - 10 - 92  
superseded on

The information given here is subject to change without notice. Design changes may be made in order to improve the product.

