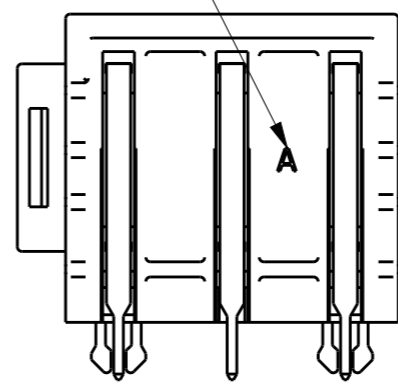
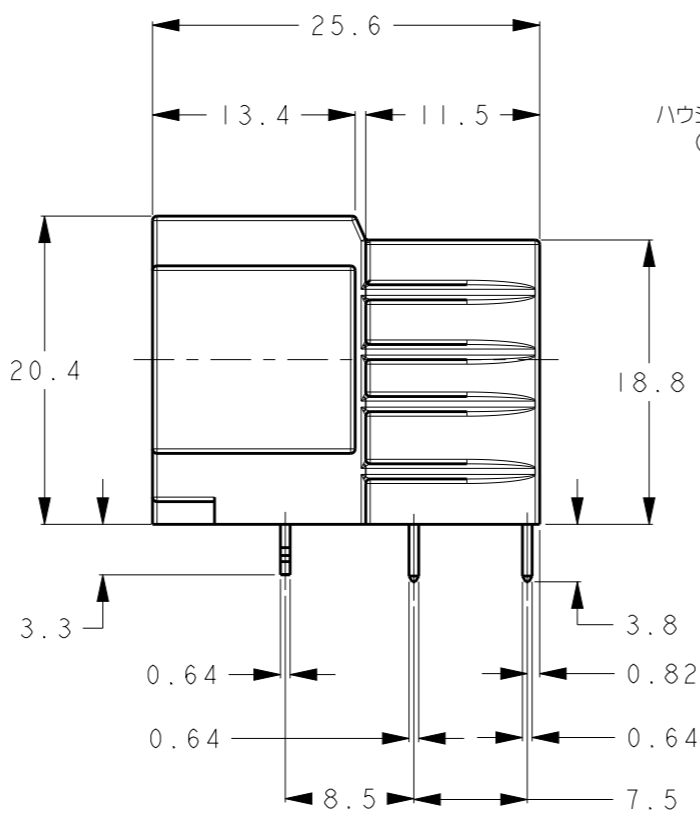
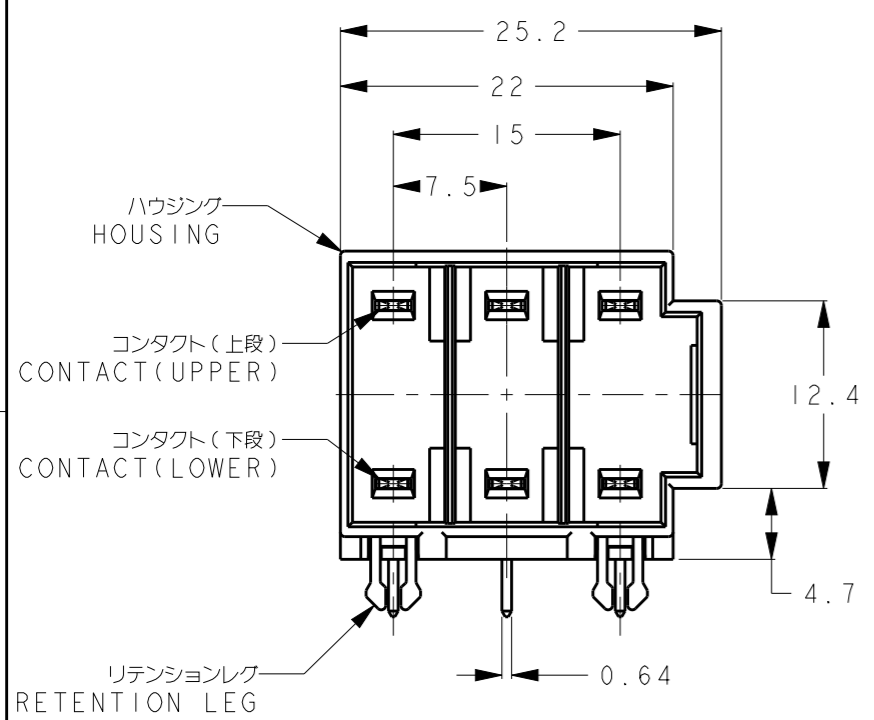
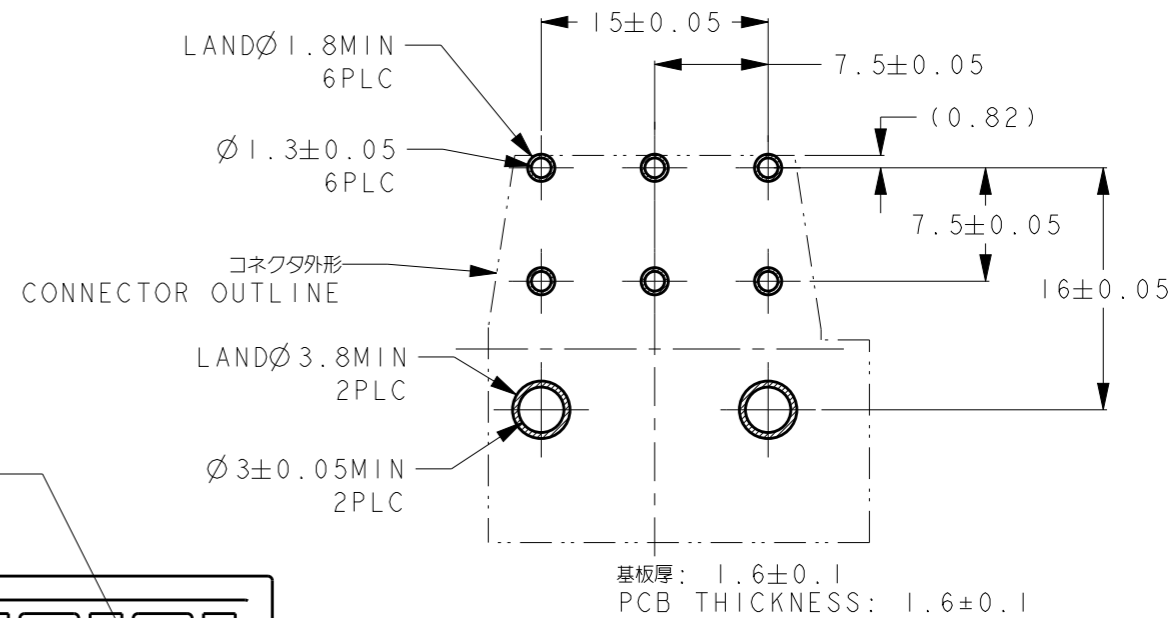
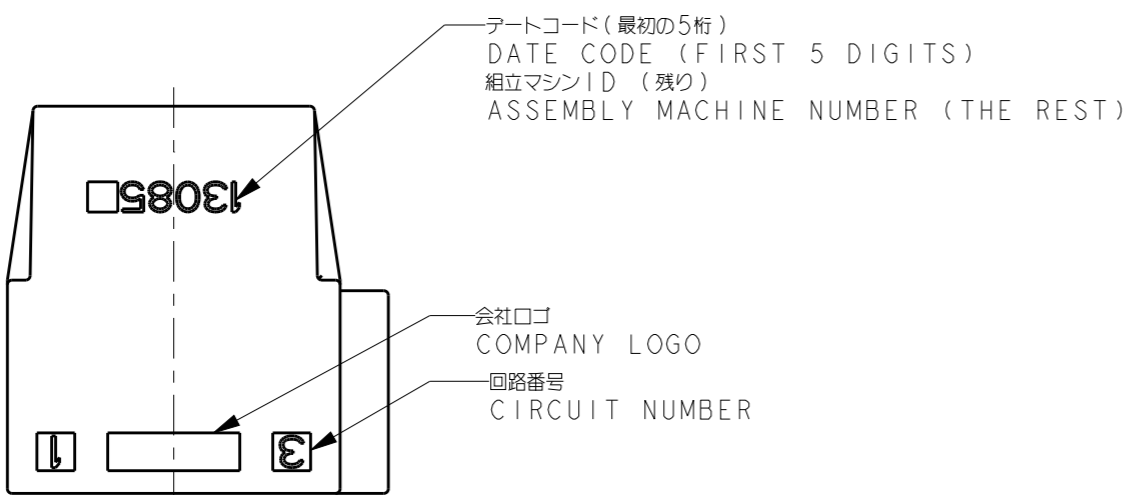


THIS DRAWING IS UNPUBLISHED. RELEASED FOR PUBLICATION XXXX2011  
 © COPYRIGHT 2011 BY Tyco Electronics Japan G.K. ALL RIGHTS RESERVED.

LOC	DIST	REVISIONS					
		P	LTR	DESCRIPTION	DATE	DWN	APVD
J	-	A		REVISED, ECR-13-017380	08NOV2013	Y.O	N.Y
		B		REVISED	12JUN2018	K.T	E.I
		BI		REVISED ECR-20-008284	11JUN2020	A.W	R.B



参考基板レイアウト  
RECOMMENDED PCB LAYOUT

- MATERIAL  
HOUSING: THERMOPLASTIC POLYESTER. COLOR: BLACK.  
CONTACT: COPPER ALLOY  
RETENSION LEG: COPPER ALLOY
- PLATING  
CONTACT POINT: UNDER Ni PLATING.  
OVER Au PLATING.  
RETENSION LEG AND TINE : UNDER Ni PLATING.  
OVER Tin PLATING.

- 材料  
ハウジング: 熱可塑性ポリエステル, 色: 黒  
コンタクト: 銅合金  
リテンションレグ: 銅合金
- めっき  
コンタクト接点部: ニッケル下地めっき上に金めっき  
リテンションレグおよびコンタクトはんだ付け部: ニッケル下地めっき上に錫めっき

2229806-1  
型番  
PART NUMBER

THIS DRAWING IS A CONTROLLED DOCUMENT.		DWN Y. OKADA 20FEB2013	TE Connectivity	
DIMENSIONS: 単位: 概 mm		CHK S. YAMADA 20FEB2013		
TOLERANCES UNLESS OTHERWISE SPECIFIED: 一般公差 $\pm$ 0.3		APVD N. YAMASAKI 20FEB2013	NAME 名称 DYNAMIC D3950 6P HEADER ASSEMBLY	
		PRODUCT SPEC 製品規格 108-78997	APPLICATION SPEC 取付適用規格 411-78272	
MATERIAL 材料	SEE NOTE	FINISH 仕上	SEE NOTE	WEIGHT -
Customer Drawing		SCALE 尺度 2:1	SHEET 番号 A300779	RESTRICTED TO REV BI