



1T8E_1U series

1W - Single Output DC-DC Converter - Fixed Input - Isolated & Unregulated

DC-DC Converter 1 Watt

- ⊕ Small footprint
- ⊕ Miniature SMD package style
- ⊕ High efficiency up to 70%
- ⊕ 1000VDC isolation
- ⊕ Temperature range: -40°C ~ +85°C
- ⊕ Industry standard pinout
- ⊕ Low temperature rise
- ⊕ Internal SMD construction
- ⊕ No external component required
- ⊕ RoHS compliance



The 1T8E_1U series is specially designed for applications where a group of polar power supplies are isolated from the input power supply in a distributed power supply system on a circuit board.

These products apply to:

- 1) Where the voltage of the input power supply is fixed (voltage variation $\leq \pm 10\%$)
- 2) Where isolation is necessary between input and output (isolation voltage $\leq 1000\text{VDC}$)
- 3) Where the regulation of the output voltage and the output ripple noise are not demanding

Such as: digit circuit condition; normal low-frequency artificial circuit condition; relay drive circuit condition, etc.

Common specifications	
Short circuit protection:	1 second
Temperature rise at full load:	25°C TYP (Ta = 25°C)
Cooling:	Free air convection
Operation temperature range:	-40°C ~ +85°C
Storage temperature range:	-40°C ~ +100°C
Lead temperature	300°C MAX, 1.5mm from case for 10 sec
Storage humidity range:	< 95%
Package material:	Epoxy Resin [UL94-V0]
MTBF (MIL-HDBK-217F@25°C):	>3,500,000 hours
Weight:	1g
MSL (Moisture sensitivity level):	J-STD-020D standard - Level 2

Input specifications					
Item	Test condition	Min	Typ	Max	Units
Input voltage			5		VDC
Input voltage range			± 10		%
Filter	Capacitor				

Isolation specifications					
Item	Test condition	Min	Typ	Max	Units
Isolation voltage	Input to Output (2sec/0.5mA)	1000			VDC
Isolation resistance	Test at 500VDC	1000			MΩ

Output specifications							
Item	Test condition	Min	Typ	Max	Units		
Output voltage accuracy			± 5		%		
Line regulation	For Vin change of 1%		1.2		%		
Load regulation	10% to 100% load		15		%		
		• 3.3V				%	
		• 5V			15	%	
		• 9V			9	%	
		• 12V			7.5	%	
• 15V		7	%				
Transient response setting time	50% load step change		350		μs		
Temperature drift	100% full load			± 0.03	%/°C		
Ripple & Noise*	20MHz Bandwidth			100	mVp-p		
Switching frequency	Full load, nominal input		100		KHz		

* Ripple and noise tested with "parallel cable" method. See detailed operation instructions at DC-DC Application Notes.

Example:

1T8E_0505S1U

1 = 1Watt; T8 = SMT8; E = Series; 05 = 5Vin; 05 = 5Vout; S = Single output; 1 = 1kVDC; U = Unregulated output

Note:

1. Operation under minimum load will not damage the converter; However, they may not meet all specification listed.
2. Max. Capacitive Load tested at input voltage range and full load.
3. All specifications measured at Ta = 25°C, humidity < 75%, nominal input voltage and rated output load unless otherwise specified.
4. In this datasheet, all the test methods of indications are based on our corporate standards.

Part Number	Input Voltage [V]	Output Voltage [VDC]	Output Current [mA]	Capacitive load [μF, Max.]	Efficiency [%, typ]
1T8E_xx03S1U	3.3; 5; 9; 12; 15	3.3	303	220	65
1T8E_xx05S1U	3.3; 5; 9; 12; 15	5	200	220	70
1T8E_xx09S1U	3.3; 5; 9; 12; 15	9	110	220	75
1T8E_xx12S1U	3.3; 5; 9; 12; 15	12	84	220	78
1T8E_xx15S1U	3.3; 5; 9; 12; 15	15	67	220	80

• xx = Input Voltage (possible for other input and output voltage combinations on request)

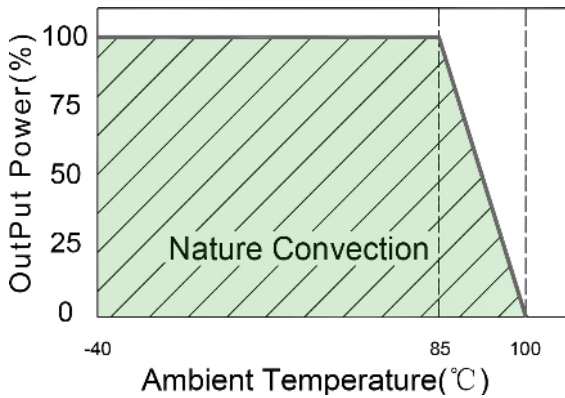
- Vin = 3.3VDC, xx = 03
- Vin = 5VDC, xx = 05
- Vin = 9VDC, xx = 09
- Vin = 12VDC, xx = 12
- Vin = 15VDC, xx = 15

1T8E_1U series

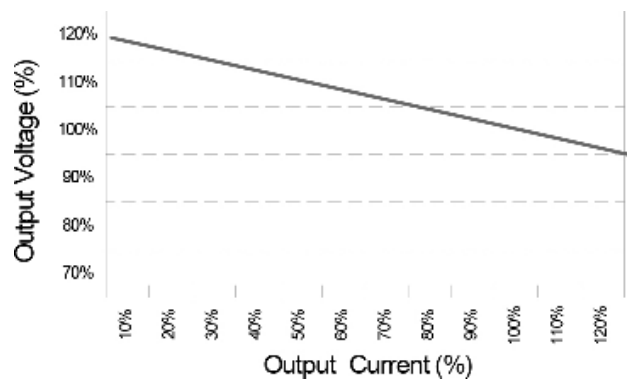
1W - Single Output DC-DC Converter - Fixed Input - Isolated & Unregulated

Typical characteristics

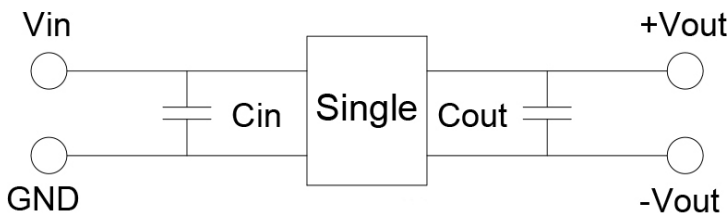
Temperature derating graph



Tolerance envelope graph



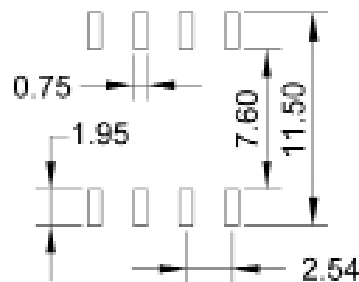
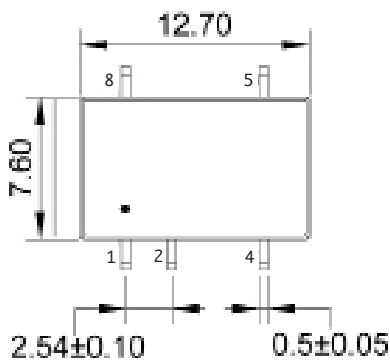
Recommended test circuit



3.3V: Cin 4.7uF, 25V
 5V: Cin 4.7uF, 25V
 9V: Cin 4.7uF, 25V
 12V: Cin 2.2uF, 25V
 15V: Cin 1uF, 50V

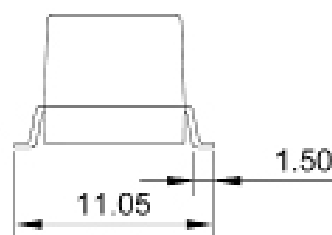
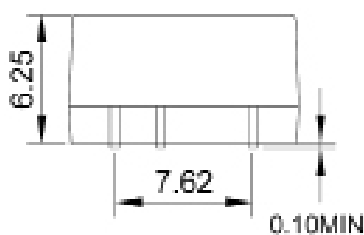
3.3V: Cout 22uF, 16V
 5V: Cout 10uF, 25V
 9V: Cout 4.7uF, 25V
 12V: Cout 2.2uF, 25V
 15V: Cout 1uF, 50V

Mechanical dimensions



SUGGESTED PAD LAYOUT

PIN	Single
1	-Vin
2	+Vin
4	-Vout
5	+Vout
8	NC



Note:
 Unit: mm[inch]
 General tolerances: ±0.25mm[±0.010inch]

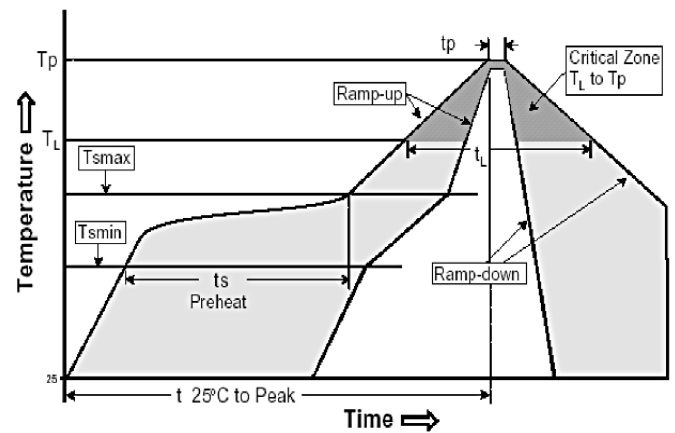
1T8E_1U series

1W - Single Output DC-DC Converter - Fixed Input - Isolated & Unregulated

RoHS compliant type

Our RoHS parts just can withstand IR Reflow peak temperature: 240°C MAX as the following profile:

Profile Feature	Pb-Free Assembly
Average Ramp-Up Rate (Ts max to Tp)	3°C /second max.
Preheat -Temperature Min (Ts min) -Temperature Max (Ts max) -Time (ts min to ts max)	150°C 200°C 60-180 seconds
Time maintained above -Temperature (TL) -Time (tL)	217°C 60-150 seconds
Peak/Classification Temperature (Tp)	240°C max.
Time within 5°C of actual Peak Temperature (tp)	20-40 seconds
Ramp-Down Rate	6°C/seconds max.
Time 25°C to Peak Temperature	6 minutes max.



Packing informations

