

DWG. NO.
SD-57990-001

SIMILAR ITEM

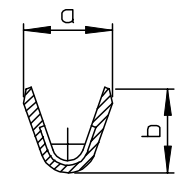
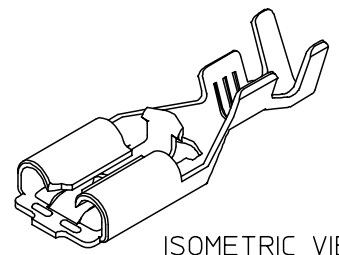
PROJECT NO.

B

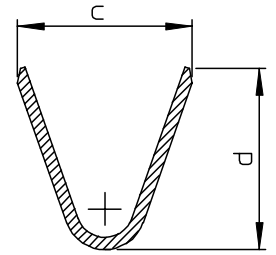
DO NOT SCALE DRAWING
DIMENSION IN METRIC

0.5 MAX.
CUT OFF TAB

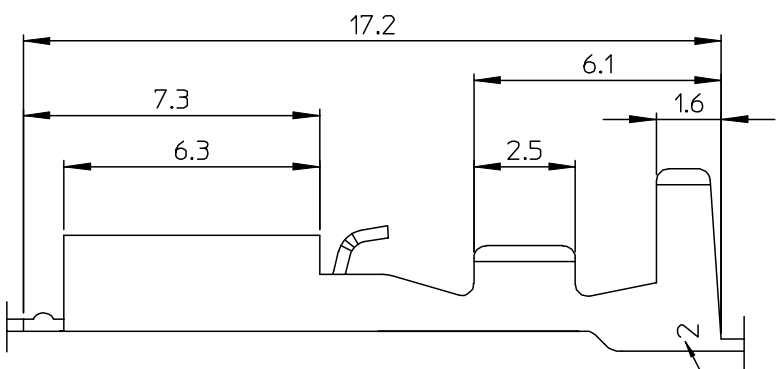
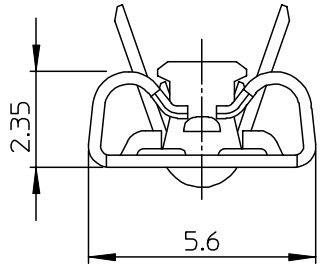
PITCH=18.8



SECTION A-A



SECTION B-B



TRADE MARK
(MK2)

MATERIAL NO.	ENG NO.	DIMENSION				WIRE RANGE
		a	b	c	d	
579909710	57990-9710	2.3	2.1	4.3	4.5	AWG 26 - 20
579909810	57990-9810	3.5	3.3	5.8	5.2	AWG 20 - 14

- NOTES
1. MATERIAL : BRASS, 0.3mm THICKNESS
 2. FINISH : PRE-TIN PLATED
(1.0MICROMETER MIN. TIN OVER 0.3MICROMETER MIN. COPPER)
 3. MATING TAB : 0.5mm THICKNESS, 4.75mm WIDTH

NEW RELEASED ECN NO. KR2003-0193 DRWN: C.B.CHIN 03/01/20 CHK: W.Y.YANG APPR: C.W.LEE	QUALITY SYMBOLS MAJOR $\nabla = 0$ CRITICAL $\nabla C = 0$	GENERAL TOLERANCES: (UNLESS SPECIFIED)		SCALE 8:1	DESIGN UNITS <input checked="" type="checkbox"/> mm <input type="checkbox"/> INCH	THIRD ANGLE PROJECTION <input checked="" type="checkbox"/> <input type="checkbox"/>	DIMENSIONS: <input type="checkbox"/> mm <input checked="" type="checkbox"/> INCH <input type="checkbox"/> mm ONLY	SHT 1	REV	
		4 PLACES $\pm 0.$	$\pm -$	DRAWN BY & DATE C.B.CHIN 02/09/09	TITLE: .187 MP-LOCK REC' TERMINAL FOR SLEEVE					
		3 PLACES $\pm 0.$	$\pm -$	CHECKED BY & DATE W.Y.YANG 02/09/09	MOLEX INCORPORATED					
		2 PLACES ± 0.20	$\pm -$	APPROVED BY & DATE C.W.LEE 02/09/09	CAD FILENAME S57990AA.MI	MATERIAL NO. SEE TABLE	DRAWING NO. SD-57990-001	SHEET NO. 1 OF 1	SIZE B	
1 PLACE ± 0.30	$\pm -$	ANGULAR: $\pm 1^\circ$	DRAFT WHERE APPLICABLE MUST REMAIN WITHIN DIMENSIONS		THIS DRAWING CONTAINS INFORMATION THAT IS PROPRIETARY TO MOLEX INCORPORATED AND SHOULD NOT BE USED WITHOUT WRITTEN PERMISSION.					