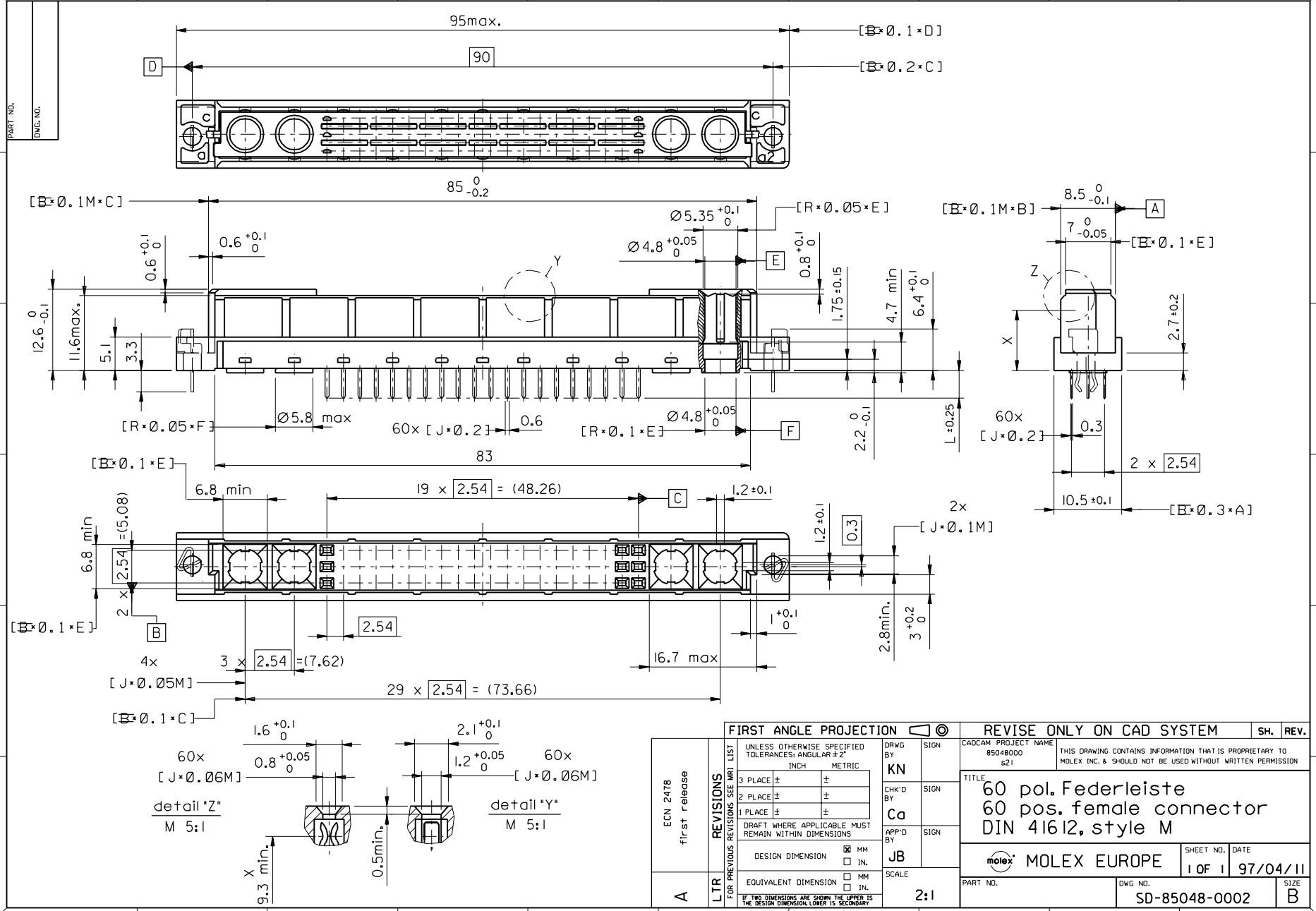


PART NO.
DWG. NO.



FIRST ANGLE PROJECTION		REVISE ONLY ON CAD SYSTEM		SH.	REV.
UNLESS OTHERWISE SPECIFIED TOLERANCES: ANGULAR ±2°		DRWG BY	SIGN	CAD/CAM PROJECT NAME	
INCH METRIC		KN		85048000 s21	
3 PLACE ± ±		CHK'D BY	SIGN	THIS DRAWING CONTAINS INFORMATION THAT IS PROPRIETARY TO MOLEX INC. & SHOULD NOT BE USED WITHOUT WRITTEN PERMISSION	
2 PLACE ± ±		Ca		TITLE	
1 PLACE ± ±		APP'D BY	SIGN	60 pol. Federleiste 60 pos. female connector DIN 41612, style M	
DRAFT WHERE APPLICABLE MUST REMAIN WITHIN DIMENSIONS		JB		MOLEX EUROPE	
DESIGN DIMENSION <input checked="" type="checkbox"/> MM <input type="checkbox"/> IN.		SCALE		SHEET NO. DATE	
EQUIVALENT DIMENSION <input type="checkbox"/> MM <input type="checkbox"/> IN.		2:1		1 OF 1 97/04/11	
IF TWO DIMENSIONS ARE SHOWN THE UPPER IS THE DESIGN DIMENSION, LOWER IS SECONDARY		PART NO.		DWG. NO.	
		SD-85048-0002		SIZE	
				B	

View on mating side

○		A	A	A	A	A	A	A	A	A	A	A	A	A	A	A	A		
○																			
○		A	A	A	A	A	A	A	A	A	A	A	A	A	A	A	A		

1 2 3 4 5 6 7 8 9 10 11 12 13 14 15 16 17 18 19 20 21 22 23 24 25 26 27 28 29 30 31 32 33 34 35 36 37 38 39 40

A = 40 standard contacts L=4,5

Marking	Standard
Performance level	G2/0 = Contact area level2 / Termination tin
Flux proof	no
Fixing clip	no
Dimensions	SD-85048-0002 sht.1
Technical Data	PS-85042-0001

A	G2/0	a7-26	c7-26
Contact symbol	Perform. level	Contact position number	

ECN 2478	first release	REVISIONS		FOR PREVIOUS REVISIONS SEE MRI LIST	
▷	LTR	DESIGN DIMENSION	<input type="checkbox"/> MM <input type="checkbox"/> IN.	SCALE	
		EQUIVALENT DIMENSION	<input type="checkbox"/> MM <input type="checkbox"/> IN.		
		IF TWO DIMENSIONS ARE SHOWN, THE UPPER IS THE DESIGN DIMENSION, LOWER IS SECONDARY			
		APP'D BY	JB	SIGN	
		CHK'D BY	Ca	SIGN	
		DRWG BY	KN	SIGN	
		UNLESS OTHERWISE SPECIFIED TOLERANCES: ANGULAR ± 2°			
		INCH			
		3 PLACE ± .	±		
		2 PLACE ± .	±		
		1 PLACE ± .	±		
		DRAFT WHERE APPLICABLE MUST REMAIN WITHIN DIMENSIONS			
		CAD/CAM PROJECT NAME			
		s8504800			
		s91			
		THIS DRAWING CONTAINS INFORMATION THAT IS PROPRIETARY TO MOLEX INC. & SHOULD NOT BE USED WITHOUT WRITTEN PERMISSION			
		REVISE ONLY ON CAD SYSTEM		SH. REV.	
		TITLE		SHEET NO.	DATE
		60 pos. female connector acc. DIN 41612, style M contacts arrangement		1 OF 1	97/05/26
		MOLEX EUROPE		DWG NO.	SD-85048-0098
		PART NO.		SIZE	A