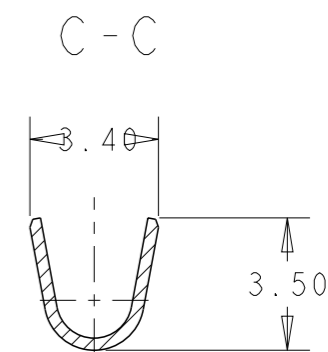
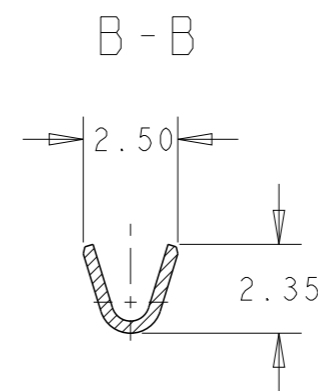
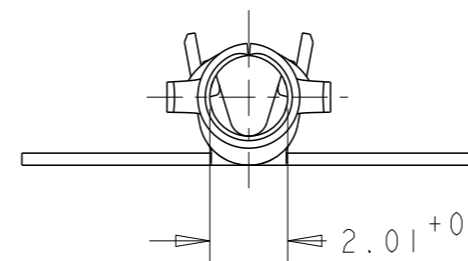
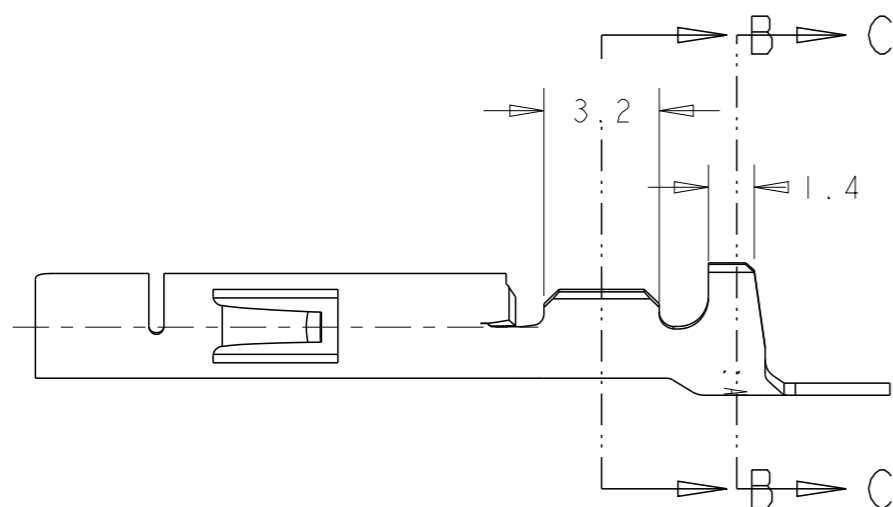


LOC
AL

DIST
2

REVISIONS

P	LTR	DESCRIPTION	DATE	DWN	APVD
	J2	ECR-11-005629	17AUG2011	C. J	R. P
	J3	ECR-12-015397	17SEP2012	MGT	R. P

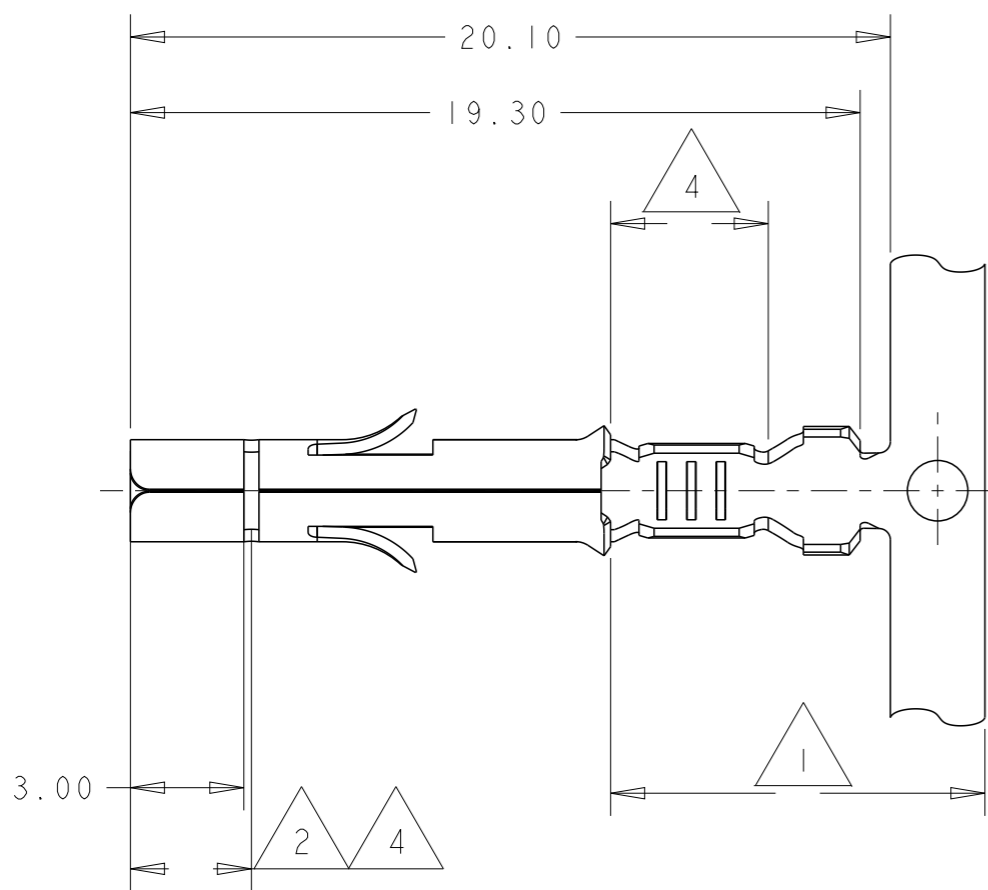


NOTES:

Bemerkungen:

- 1 2-6µm Sn OVER Ni IN CRIMP-AREA
2-6µm Sn über Ni in der Crimpzone
- 2 0.8µm Au OVER Ni IN CONTACT-AREA
0.8µm Au über Ni in der Kontaktzone
- 3 SUITABLE FOR Ø1.0-2.5mm
Für Isolations Ø1.0-2.5mm geeignet
- 4 0.8µm Au OVER 1.3µm Ni ON INSIDE OF WIRE BARREL AND CONTACT AREA
0.8µm Au über 1.3µm Ni in der Drahtcrimp und Kontaktzonen, sonst 1.3µm Ni

OBSOLETE	Superseded by 350851-7	926895-7	926884-7	CuZn30	1 2
		926895-6	926884-6	CuSn4	1 2
		926895-3	926884-3	CuSn4	PRE-TIN
		926895-2	926884-2	CuZn30	4
		926895-1	926884-1	CuZn30	PRE-TIN
	LOOSE PIECE	PART NO.	MATERIAL	FINISH	



THIS DRAWING IS A CONTROLLED DOCUMENT.		DWN J. Skoda	07NOV2005	STE TE Connectivity	
DIMENSIONS: mm		CHK R. Vlcek	APVD -		
TOLERANCES UNLESS OTHERWISE SPECIFIED:		PRODUCT SPEC 108-1031	APPLICATION SPEC 114-18011	SIZE A3	CAGE CODE 00779
0 PLC ±0.2	1 PLC ±0.2	WEIGHT -		DRAWING NO C-926884	RESTRICTED TO -
2 PLC ±0.2	3 PLC ±	CUSTOMER DRAWING		SCALE 5:1	SHEET 1 OF 1
4 PLC ±	ANGLES ±°			REV J3	
MATERIAL SEE TABLE	FINISH SEE TABLE				