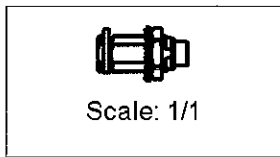
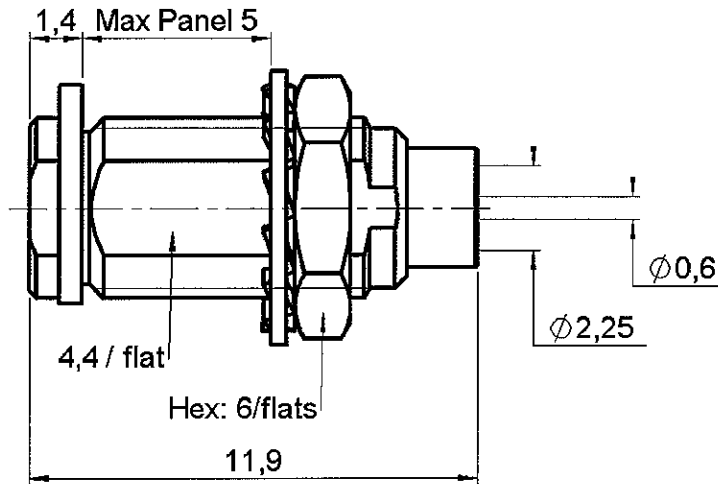


STRAIGHT BULKHEAD JACK SOLDER TYPE

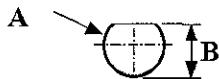
R113.303.000

CABLE .085

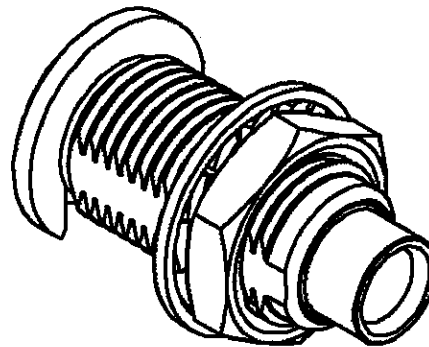
Series : MCX



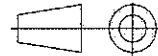
PANEL CUT OUT



mm		
	Maxi	mini
A	5	4.9
B	5.59	4.46



All dimensions are in mm.



COMPONENTS	MATERIALS	PLATINGS (µm)
BODY	BRASS	GOLD 0.2 OVER NICKEL 2
CENTER CONTACT	BERYLLIUM COPPER	GOLD 1.3 OVER NICKEL 2
OUTER CONTACT	-	-
INSULATOR	PTFE	-
GASKET	-	-
OTHERS PARTS	BRASS	GOLD 0.2 OVER NICKEL 2
-	-	-
-	-	-

Issue : 0450 E

In the effort to improve our products, we reserve the right to make changes judged to be necessary.



STRAIGHT BULKHEAD JACK SOLDER TYPE

R113.303.000

CABLE .085

Series : **MCX**

PACKAGING

SPECIFICATION

Standard	Unit	Other
1		Contact us

CABLE ASSEMBLY

ELECTRICAL CHARACTERISTICS

Stripping	a	b	c	d	e	f
mm	2.70	0.00	0.00	0.00	2.10	0.00

Impedance **50** Ω
 Frequency **0-6** GHz
 VSWR **1.10 + 0.040** x F(GHz) Maxi
 Insertion loss **0.25** √F(GHz) dB Maxi
 RF leakage **NA** - F(GHz) dB mini
 Voltage rating **250** Veff Maxi
 Dielectric withstanding voltage **750** Veff mini
 Insulation resistance **1000** MΩ mini

Assembly instruction :

Recommended cable(s)
 RG 405
 KS 1

Cable retention

- pull off **155** N mini
 - torque **NA** N.cm

MECHANICAL CHARACTERISTICS

TOOLING

Center contact retention
 Axial force – Mating end **NA** N mini
 Axial force – Opposite end **NA** N mini
 Torque **NA** N.cm mini

Part Number	Description	Hexagon
R282.740.020	SOLDERING MOUNTING	

Recommended torque
 Mating **NA** N.cm
 Panel nut **60** N.cm
 Clamp nut **NA** N.cm
 A/F clamp nut **0.000** mm

OTHERS CHARACTERISTICS

Mating life **500** Cycles mini
 Weight **0.000** g

ENVIRONMENTAL

Operating temperature **-55/+115** °C
 Hermetic seal **NA** Atm.cm3/s
 Panel leakage **NA**

Issue : 0450 E

In the effort to improve our products, we reserve the right to make changes judged to be necessary.



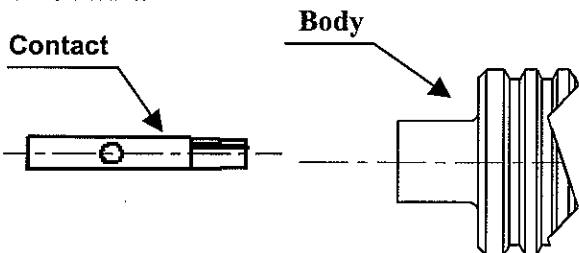
STRAIGHT BULKHEAD JACK SOLDER TYPE

R113.303.000

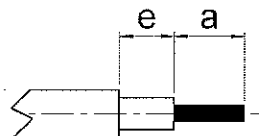
CABLE .085

Series : MCX

COMPONENT



STRIPPING DIMENSIONS



We recommend a thermal preconditioning cable.

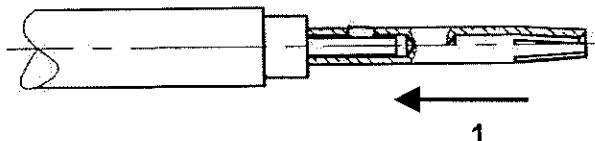
1

Cable stripping.



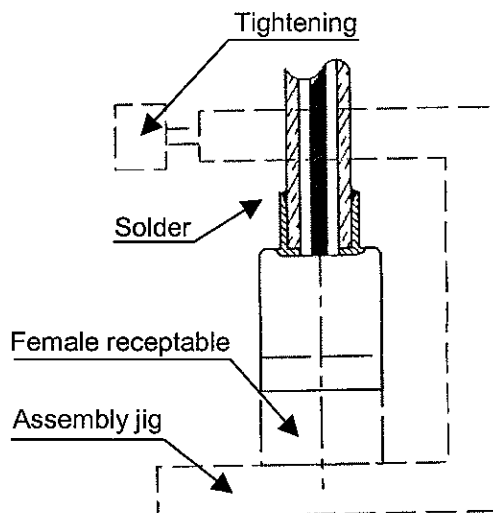
2

Tin centre contact solder pot.
Solder centre contact on cable inner conductor.
Clean solder.



3

Introduce cable into the connector body until contact with the body shoulder.
Place the sub assembly into the assembly jig R282 740 020 (or equivalent).
We advice to connect a female receptable to the connector prior to solder the body in order to respect right centre contact position.
Tighten the sub assembly.
Solder body on the cable.
Let the assembly cool down before removing it from the jig.
Clean solder.



Issue : 0450 E

In the effort to improve our products, we reserve the right to make changes judged to be necessary.

