

Amphenol  
FCI

2016 AFCl

form: A3-2016-02-24

1

2

3

4

5

6

**ORDERING INFORMATION**

SERIES: D B P V 25 P 3 64 C T X XXX LF

SHELL SIZE: E.A.B.C.D

CHARACTERISATION: P-DP SERIES

OPTIONS: BLANK-STANDARD, V-FEM. SCREW LOCK HEX. (UNC), L-CLINCH NUT (M3), O-CLINCH NUT (UNC), S-SPACER RIVETTED TO SHELL (S/S ONLY), NO. OF CONTACTS: 09,15,25,37,50, CONTACTS: P - PIN, S - SOCKET

LEAD FREE

SPECIAL CODES

DIMPLES - OPTIONAL

X-ON MALE CONNECTORS ONLY

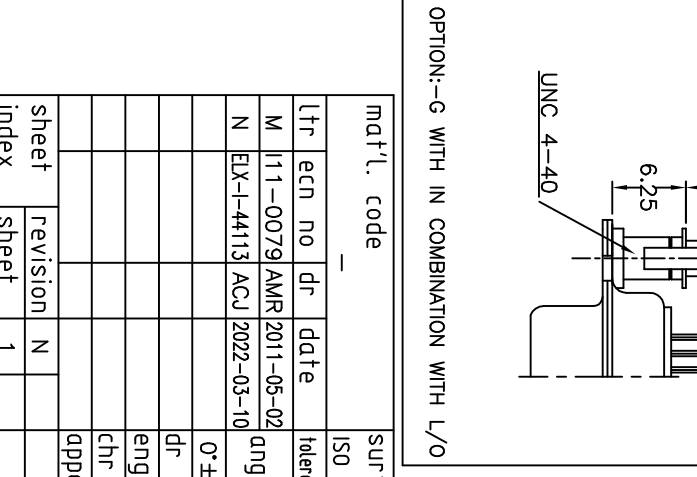
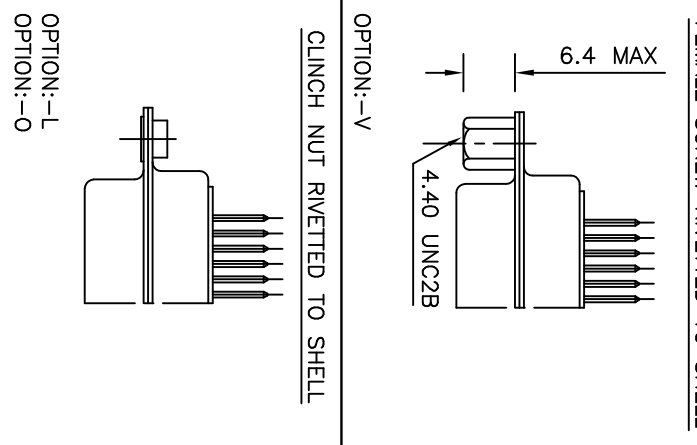
SHELL PLATING: BLANK-ZINC +C3, T-STD. TIN over Cu

BLANK-STANDARD

G-HARPOON (UNC4-40)

CONTACT PLATING: 64 - 200 MATING CYCLES, 65 - 500 MATING CYCLES

TERMINATION TYPE: 3-STRAIGHT SPILL



mat'l. code	ISO 1302	tolerance	ISO 406	ISO 1101	projection	product family	title
ltr	ecr no	dr	date	tolerances unless otherwise specified	mm	D-SUB	D-SUB S/S CONNECTOR (DP SERIES WITH ASSEMBLY OPTIONS)
M	111-0079	AMR	2011-05-02	.0±0.1			
N	EX1-44113	ACJ	2022-03-10	.00±0.05	mm		
				.000±0.005	scale 1:1		
		dr	MINI VANDANATHI 1993-03-20				
		engr	ARUN C JOHN 2022-03-10				
		chr	GREGAR MATHEW 2022-03-10				
		appd	SANJU KURIAKOSE 2022-03-10				
sheet index	revision	N					
	sheet	1					

NOTE:-INSIDE DIMENSIONS OF MALE AND OUTSIDE DIMENSIONS OF THE FEMALE CONNECTOR.

"This LF product meets European Union Directives and other country regulations as described in GS-22-008"

The housing will withstand exposure to 260°C peak temperature for 3.5 seconds in a wave solder application with a 1.6mm minimum thick circuit board.

Packaging as per GS-14-920

**TECHNICAL SPECIFICATIONS**

SHELLS : TIN/ZINC PLATED STEEL

INSULATOR MATERIAL : SELF EXTINGUISHING THERMOPLASTIC- TO UL CLASS 94 V0

THE HOUSING WILL WITHSTAND EXPOSURE TO 260-265°C IF WE USE PROTECTIVE ADHESIVE (Type Kapton or Teflon) OR PROTECTIVE METALLIC DEVICE

CONTACTS DIA ON ACTIVE AREA : 01 MM.

CONTACTS MATERIAL : COPPER ALLOY

CONTACT PLATING : GXT / GOLD OVER NICKEL

OPERATING TEMPERATURE : -55°C +125°C

OPERATING CURRENT : 7.5 A PER CONTACT

CONTACT RESISTANCE : <7.3 mΩ

INSULATION RESISTANCE : >5000 MΩ

MAXIMUM VOLTAGE : 1000 V.r.m.s

MECHANICAL ENDURANCE : 500 MATINGS FOR CODE 65 : 200 MATINGS FOR CODE 64

DAMP HEAT : 56 DAYS FOR CODE 65 : 21 DAYS FOR CODE 64

SIZE	SHELL A	SHELL B	SHELL C	SHELL D	SHELL E	SHELL F	SHELL G	SHELL H	SHELL J	SHELL K	SHELL L
50	66.65	52.68	61.11	11.08	14.99	11.09	5.85	55.07	13.31	1.50	1.0
	66.65	52.30	61.11	10.62	14.99	11.21	6.05	55.07	13.31	1.10	0.8
	68.94	55.30	63.50	8.23	12.17	11.09	5.85	57.45	10.46	1.50	1.0
37	68.94	54.71	63.50	7.77	12.17	11.21	6.05	57.45	10.46	1.10	0.8
	52.65	38.84	47.04	8.23	12.17	11.07	5.85	41.02	10.46	1.10	0.8
25	52.65	38.25	47.04	7.77	12.17	11.21	6.05	41.02	10.46	1.10	0.8
	38.76	25.12	33.32	8.23	12.17	10.99	5.85	27.25	10.46	1.10	0.8
15	38.76	24.54	33.32	7.77	12.17	11.21	6.05	27.25	10.46	1.10	0.8
	30.43	16.79	24.99	8.23	12.17	10.99	5.85	19.02	10.46	1.10	0.8
09	30.43	16.21	24.99	7.77	12.17	11.21	6.05	19.02	10.46	1.10	0.8
	+0.76	+0.25	+0.12	+0.25	+0.76	+0.15	+0.51	+0.51	+0.51	+0.20	+0.22