

Accessories

R95-150



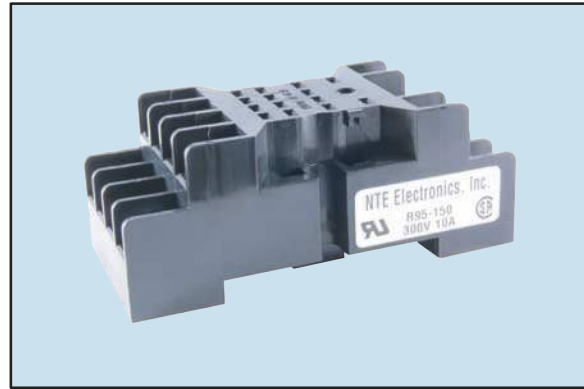
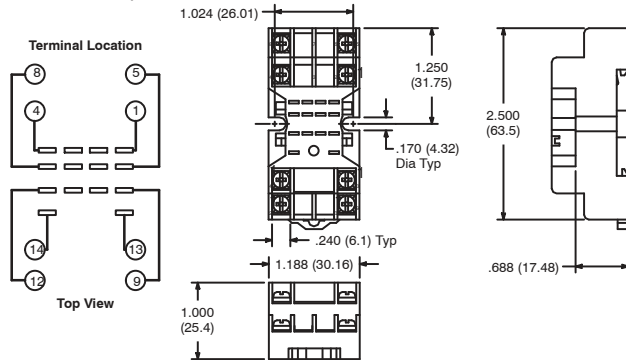
8-Pin Miniature Socket

Features

- Panel Mount
- DIN Rail Mountable
- Pressure Clamp Screws
- DPDT Applications
- Hold down clip not supplied with socket, available separately (R95-001)

Electrical Rating:

300 Volts, 10 Amps

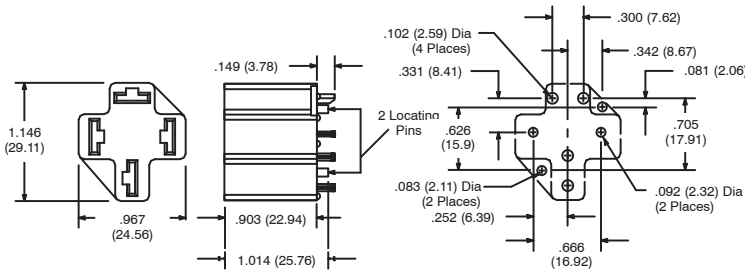


R95-159

4-Pin PC Board Socket

Features

- For R51 Series Automotive Relay (70 Amp ONLY)
- Continuous Temperature Rating of +130°C



R95-160

5-Pin PC Board Socket

Features

- For R51 Series Automotive Relay (50 Amp ONLY)
- Continuous Temperature Rating of +130°C

