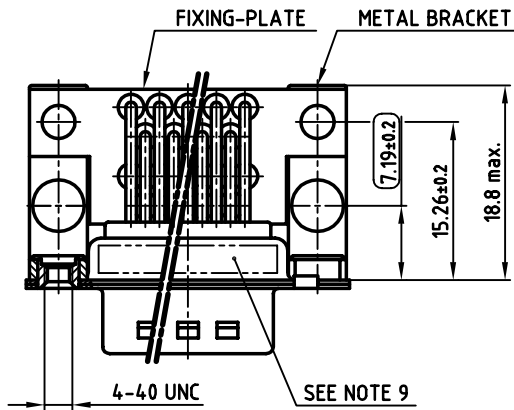
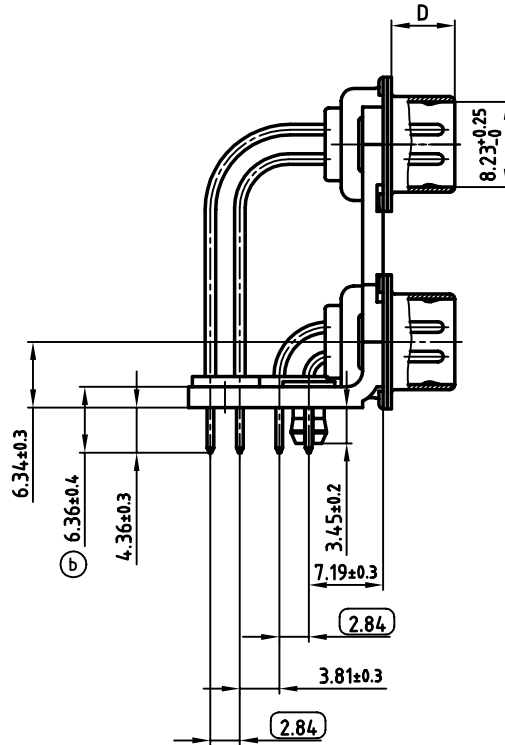
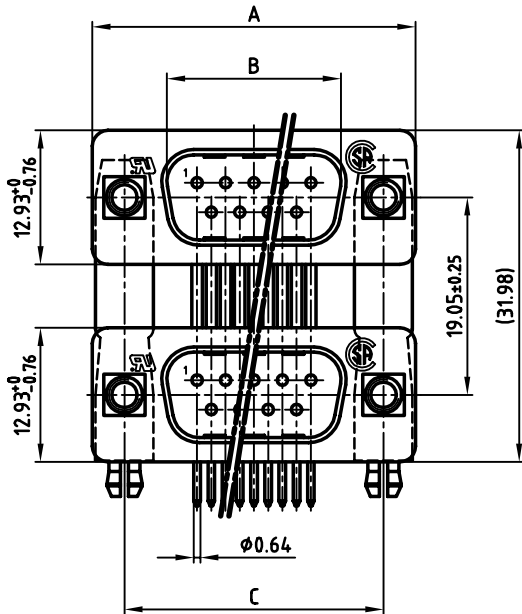


used for: D-SUB Dual Port

| POS. | A <sup>-0.76</sup> | B <sup>+0.25</sup> | C                                | D <sup>-0.3</sup> |
|------|--------------------|--------------------|----------------------------------|-------------------|
| 2x 9 | 31.19              | 16.79              | 25.00 <sup>+0.12<br/>-0.13</sup> | 6.12              |
| 2x15 | 39.52              | 25.12              | 33.30 <sup>+0.15<br/>-0.1</sup>  | 6.12              |
| 2x25 | 53.42              | 38.84              | 47.04 <sup>±0.13</sup>           | 5.99              |
| 2x37 | 69.70              | 55.30              | 63.50 <sup>±0.13</sup>           | 5.99              |

| PLATING                                 | 2 x 9pos.  | 2 x 15pos. | 2 x 25pos. | 2 x 37pos. |
|---|------------|------------|------------|------------|
| 8µ" HARD GOLD OVER<br>min. 50µ" NICKEL  | 163A19489X | 163A19499X | 163A19509X | 163A19519X |
| 30µ" HARD GOLD OVER<br>min. 50µ" NICKEL | 163C19489X | 163C19499X | 163C19509X | 163C19519X |



**NOTES:**

- METALSHELLS: STEEL; min. 320µ" TIN
- INSULATORS: PBT GF UL 94 V-0, BLACK
- CONTACTS: COPPER ALLOY  
PLATING: SEE TABLE
- METAL BRACKET: STEEL; min. 320µ" TIN over 80µ" NICKEL
- THREADED INSERT: COPPER ALLOY; min. 200µ" TIN over 80µ" NICKEL
- FIXING-PLATE: PBT GF UL 94 V-0, BLACK
- P.C.B. HOLE DRILLINGS ON SHEET 2 + 3
- MAXIMUM TORQUE VALUE FOR THREAD: 6" LBS
- CONNECTOR IS PART MARKED: PART-NO. CONEC Y/WW
- = CRITICAL DIMENSION

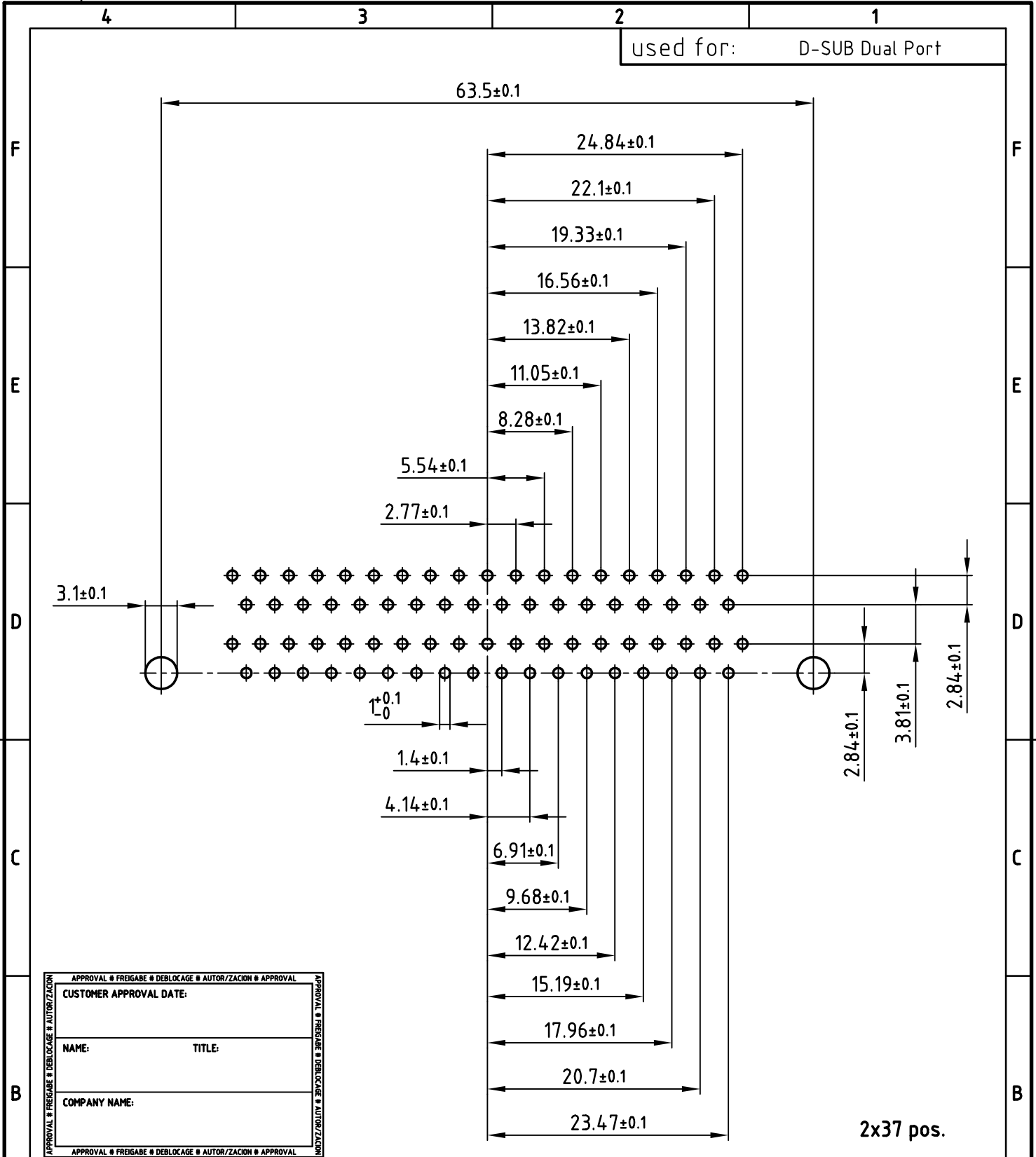
Directive 2002/95/EC  
"RoHS"  
Compliant

|   |   |
|---|---|
| APPROVAL # FREIGABE # DEBLOCAGE # AUTORIZACION # APPROVAL | APPROVAL # FREIGABE # DEBLOCAGE # AUTORIZACION # APPROVAL |
| CUSTOMER APPROVAL DATE:                                   |   |
| NAME:   | TITLE:  |
| COMPANY NAME:   |   |
| APPROVAL # FREIGABE # DEBLOCAGE # AUTORIZACION # APPROVAL | APPROVAL # FREIGABE # DEBLOCAGE # AUTORIZACION # APPROVAL |

THIS DRAWING MAY NOT BE COPIED OR REPRODUCED IN ANY WAY, AND MAY NOT BE PASSED ON TO A THIRD PARTY, WITHOUT WRITTEN PERMISSION. OWNERSHIP AND COPYRIGHT OF CONEC Gmbh DO NOT ALTER CAD DRAWING BY HAND

|       |             |            |        |
|-------|-------------|------------|--------|
| 1 x b | Ä 1919      | 09.01.2004 | Lehmen |
| rev.  | description | date       | name   |

|           |   |            |
|-----------|---|------------|
| tolerance | dim. in mm  | scale: 2:1 |
| material: | SEE NOTES   |            |
| title:    | <b>DUAL PORT 19.05mm</b><br>MALE / MALE 2x9pos. - 2x37pos.<br>with threaded insert and clip |            |
| dwg no:   | AutoCAD 2000  | DIN-A      |
|           | <b>16K1A1071</b>  | 3          |
| part no:  | SEE TABLE   |            |
|           |   | sh:1/3     |



|   |        |
|---|--------|
| APPROVAL # FREIGABE # DEBLOCAGE # AUTORIZACION # APPROVAL |        |
| CUSTOMER APPROVAL DATE:                                   |        |
| NAME:   | TITLE: |
| COMPANY NAME:   |        |
| APPROVAL # FREIGABE # DEBLOCAGE # AUTORIZACION # APPROVAL |        |

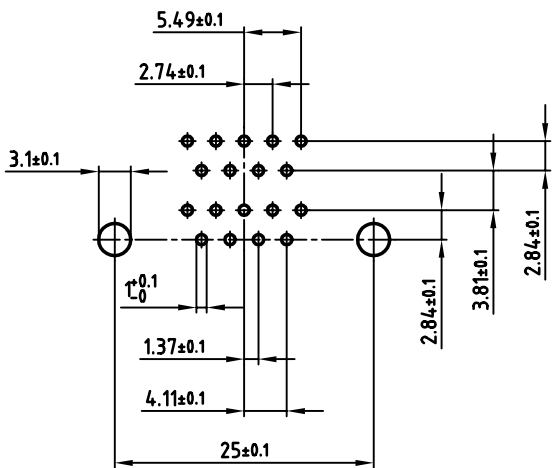
THIS DRAWING MAY NOT BE COPIED OR REPRODUCED IN ANY WAY, AND MAY NOT BE PASSED ON TO A THIRD PARTY WITHOUT WRITTEN PERMISSION.  
 OWNERSHIP AND COPYRIGHT OF CONEC GmbH  
 DO NOT ALTER CAD DRAWING BY HAND

|           |             |              |                               |                      |  |
|-----------|-------------|--------------|-------------------------------|----------------------|--|
| tolerance |             |              | dim. in mm                    |                      |  |
| 2003      | date        | name         | scale: 2:1                    |                      |  |
| drawn     | 19.12.      | Lehmenkühler | material: SEE SHEET 1         |                      |  |
| appd.     | 19.12.      | Mickenbecker | title: P.C.B. HOLE DRILLINGS  |                      |  |
| norm      | DIN 41652   |              | DUAL PORT 19.05mm MALE / MALE |                      |  |
| d-old     |             |              | with threaded insert and clip |                      |  |
| rev.      | description | date         | name                          | dwg no: AutoCAD 2000 |  |
|           |             |              |                               | DIN-A                |  |
|           |             |              |                               | 4                    |  |
|           |             |              |                               | sh:3/3               |  |
|           |             |              |                               | part no: SEE SHEET 1 |  |

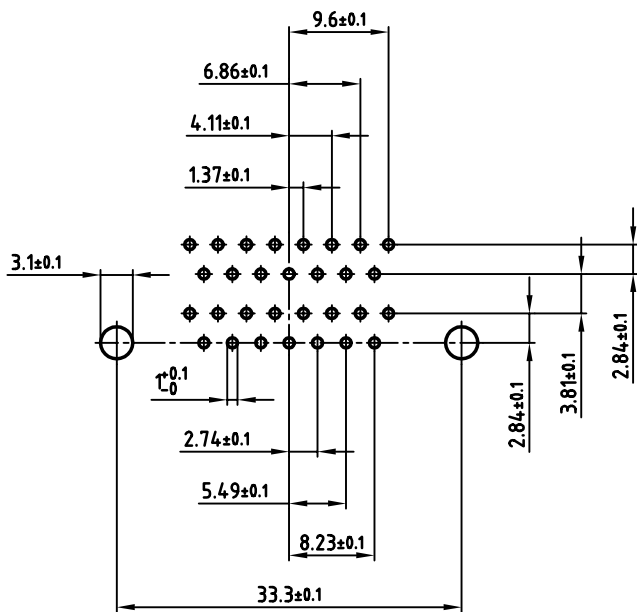
A  
B  
C  
D  
E  
F

A  
B  
C  
D  
E  
F

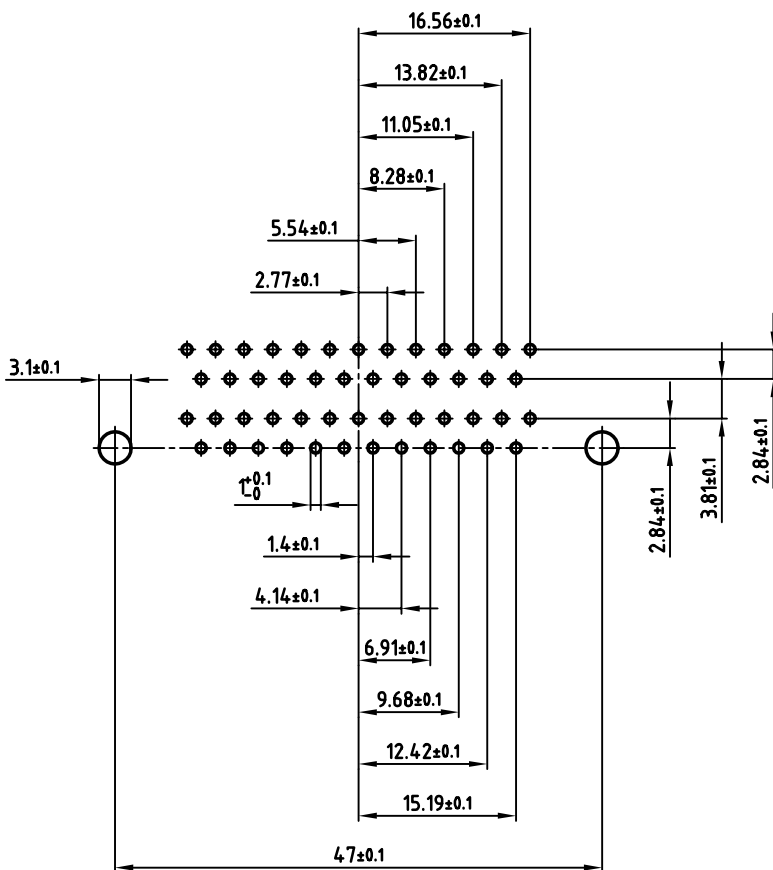
used for: D-SUB Dual Port



2x9 pos.



2x15 pos.



2x25 pos.

APPROVAL # FREIGABE # DEBLOCAGE # AUTOR/ZACON # APPROVAL

CUSTOMER APPROVAL DATE:

NAME: TITLE:

COMPANY NAME:

APPROVAL # FREIGABE # DEBLOCAGE # AUTOR/ZACON # APPROVAL

THIS DRAWING MAY NOT BE COPIED OR REPRODUCED IN ANY WAY, AND MAY NOT BE PASSED ON TO A THIRD PARTY, WITHOUT WRITTEN PERMISSION. OWNERSHIP AND COPYRIGHT OF CONEC GmbH DO NOT ALTER CAD DRAWING BY HAND

| rev. | description | date | name |
|------|-------------|------|------|
|      |             |      |      |
|      |             |      |      |
|      |             |      |      |
|      |             |      |      |
|      |             |      |      |
|      |             |      |      |
|      |             |      |      |
|      |             |      |      |
|      |             |      |      |

|           |                     |
|-----------|---------------------|
| tolerance | <br>dim. in mm      |
| 2003      |                     |
| drawn     | 19.12. Lehmenkühler |
| appd.     | 19.12. Mickenbecker |
| norm      | DIN 41652           |
| d-old     |                     |
|           |                     |

scale: 2:1

material: SEE SHEET 1

title: P.C.B. HOLE DRILLINGS  
DUAL PORT 19.05mm MALE / MALE  
with threaded insert and clip

dwg no: AutoCAD 2000 DIN-A  
16K1A1071 3 sh:2/3

part no: SEE SHEET 1