



Series 354000 DIP-to-SOIC Adapter

FEATURES

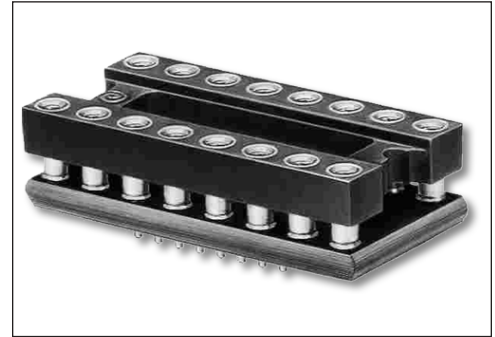
- Convenient, cost-effective means of converting DIP-to-SOIC PC board layouts.

GENERAL SPECIFICATIONS

- SOCKET BODY: black, UL 94V-0 glass-filled 4/6 Nylon 170°C continuous use temp
- PCB: FR-4, 0.062 [1.58] thick
- MALE ADAPTER PIN: Brass 360 1/2-hard per UNS C36000, ASTM B16/B16M
- MALE PIN PLATING: 200μ [5.08μ] Sn/Pb 93/7 per ASTM B579-73 over 100μ [2.54μ] Ni per SAE AMS-QQ-N-290
- FEMALE CONTACT PIN: Brass 360 1/2-hard per UNS C36000, ASTM B16/B16M
- FEMALE PIN PLATING: 10μ [0.254μ] Au per MIL-G-45204 over 100μ [2.54μ] Ni per SAE AMS-QQ-N-290
- 4-FINGER COLLET CONTACT: BeCu per UNS C17200, ASTM B194-08
- FEMALE CONTACT PLATING: 10μ [0.254μ] Au per MIL-G-45204 over 50μ [1.27μ] Ni per SAE AMS-QQ-N-290
- CONTACT CURRENT RATING: 3 amps
- OPERATING TEMPERATURE: 221°F [105°C]
- INSERTION FORCE: 180g/pin; based on a 0.018 [0.46] dia. test lead
- WITHDRAWAL FORCE: 90g/pin; based on a 0.018 [0.46] dia. test lead
- NORMAL FORCE: 140g/pin; based on a 0.018 [0.46] dia. test lead
- SOCKET ACCEPTS LEADS: 0.015-0.025 [0.38-0.64] in dia., 0.100-0.125 [2.54-3.18] long

MOUNTING CONSIDERATIONS

- SUGGESTED PCB SOLDER PAD SIZE: 0.028 [0.71] min. width



CUSTOMIZATION: In addition to the standard products shown on this page, Aries specializes in custom design and production. Special materials, platings, sizes, and configurations can be furnished, depending on the quantity. **NOTE:** Aries reserves the right to change product general specifications without notice.

ORDERING INFORMATION

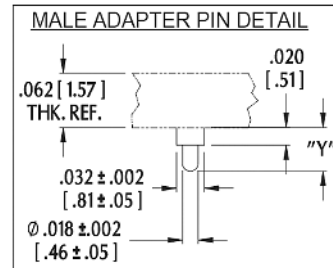
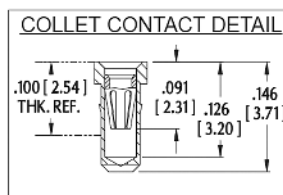
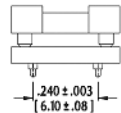
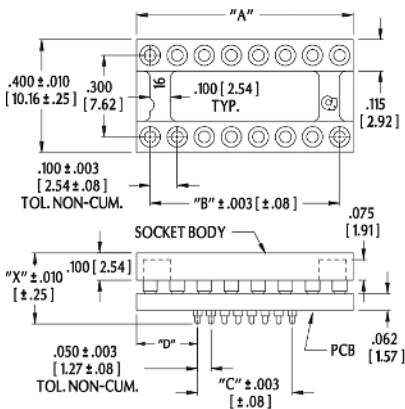
XX-354000-X 0

Pins _____ Plating Sn/Pb
 8, 14, 16, 20, 24, 28
 Series _____
 Adapter Pin Options _____
 (see P/N Suffix Table)
 1 = Short Adapter Pin
 2 = Long Adapter Pin

P/N Suffix	Dim. "X"	Dim. "Y"
-10	0.265 [16.73]	0.050 [1.27]
-20	0.325 [8.26]	0.110 [2.79]

ALL DIMENSIONS: INCHES [MILLIMETERS]
 ALL TOLERANCES: ±0.005 [0.13] UNLESS OTHERWISE SPECIFIED
 CONSULT FACTORY FOR OTHER SIZES AND CONFIGURATIONS

Pins	Dim. "A"	Dim. "B"	Dim. "C"	Dim. "D"
8	0.400 [10.16]	0.400 [10.16]	0.100 [2.54]	0.125 [3.175]
14	0.700 [17.78]	0.600 [15.24]	0.300 [7.62]	0.225 [5.72]
16	0.800 [20.32]	0.700 [17.78]	0.350 [8.89]	0.225 [5.72]
20	1.000 [25.40]	0.900 [22.86]	0.450 [11.43]	0.275 [6.99]
24	1.200 [30.48]	1.100 [27.94]	0.550 [13.97]	0.325 [8.26]
28	1.400 [35.56]	1.300 [33.02]	0.650 [16.51]	0.375 [9.53]



Bristol, PA 19007-6810 USA
 TEL (215) 781-9956 • FAX (215) 781-9845
 WWW.ARIESELEC.COM • INFO@ARIESELEC.COM