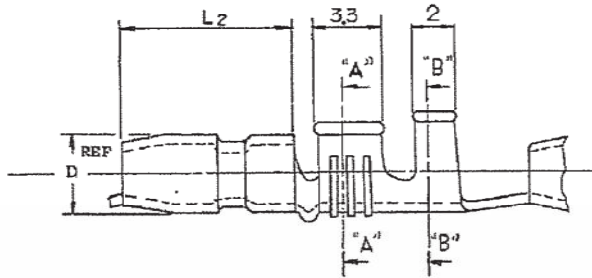
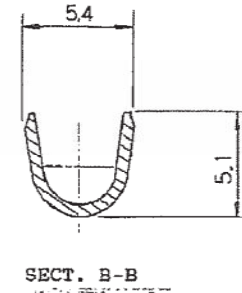
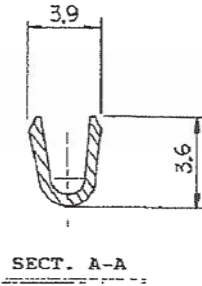
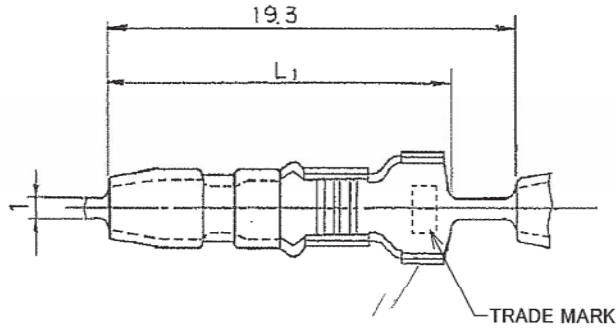


C-170002

PRINT FIRST
 単位: 1L DIMENSIONS IN MM, DO NOT SCALE PRINT



NOTE

- △ THESE ITEMS ARE FOR USE OTHER THAN IN JAPAN.
- △ GENERAL TOLERANCES; ±0.4
- △ OBSOLETE PARTS: OBSOLETE CIS STREAMLINING PER D.RENAUD/D.SINISI

注記

- △ 海外向け製品。
- △ 一般公差; ±0.4

QTY/REEL	PROD SPEC NO.	MATERIAL	FINISH
7000	108-5003	BRASS	PRE-TIN
15000	108-5003	PHOS-BZ	POST-TIN
15000	-5003		POST-TIN
15000	-5004		POST-TIN
20000	-5003	BRASS	
25000	-5004		
25000	-5003		
25000	-5003		
20000	-5003		POST-TIN
20000	-5004		POST-TIN
20000	-5004		
7000	-5004		
5000	-5003		
7000	-5003		POST-TIN
7000	108-5004	BRASS	POST-TIN

PART NO.	LOOSE	PCS NO	L1 DIM	L2 DIM	D DIM	QTY/REEL	PROD SPEC NO.	MATERIAL	FINISH
170002-2			15.8	7.3	3.5	7000	108-5004	BRASS	POST-TIN



WIRE RANGE	INSULATION DIA.	ITEM NAME	シエプラグ SHUR PLUG
25-27AWG	2.0-141		
MATERIAL	FINISH	SIZE	LOC
SEE TABLE	SEE TABLE	C	J
DR	CE	C-170002	
CHK	APP	REV.	R3
		SHEET	1-1

R3	REVISED PER ECR-19-012286	PC	TD	20SEP19
R2	REVISED PER ECO-11-005030	RK	HRM	22MAY11
LTR	REVISION RECORD	DR	CHK	DATE