

6

5

4

3

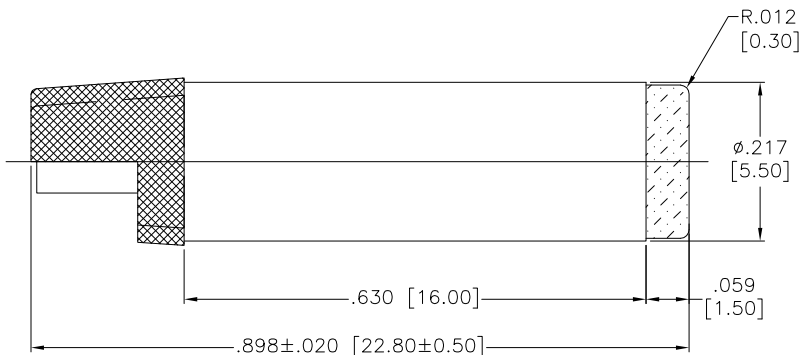
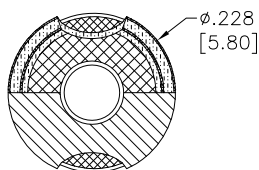
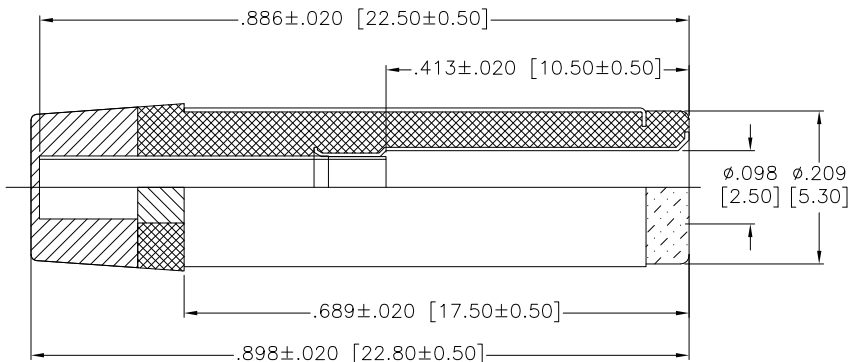
2

1

APPROVED: _____

DATE: _____ TITLE: _____

Rev	AWO #	Description	Date	Appr
-		RELEASED	4/26/16	



SPECIFICATIONS:

Material:
Outer Tube: Brass
Center Pin: Brass
Dielectric: ABS

Electrical:
Operating voltage: 12 VDC
Current rating: 2 Amps

Contact resistance: 30 mohms max
Insulation resistance: 100 Mohms min @ 500 VDC
Dielectric withstanding voltage: 500 VAC, 0.5mA for 1 minute

Environmental:
Lead free, RoHS compliant.



UNLESS OTHERWISE SPECIFIED
ALL DIMENSIONS ARE INCHES [MM]
TOLERANCES: EXCEPT AS NOTED
INCHES HOLES
.X ±.10 Ø.X ±.10
.XX ±.020 Ø.XX ±.015
.XXX ±.015 Ø.XXX ±.010

ADAM TECH

909 Rahway Avenue, Union, NJ 07083
Phone: 908-687-5000 Fax: 908-687-5710

APPROVALS		DATE
DRAWN	AY	4/26/16
CHECKED	MY	4/26/16
APPROVED		

TITLE DC PLUG 5.5X2.5X22.5MM		
SIZE X	PART NO. ADP-.098/.217/.689-M	REV. -
REF: S00118C	SCALE: NTS	SHEET 1 OF 1

6

5

4

3

2

1