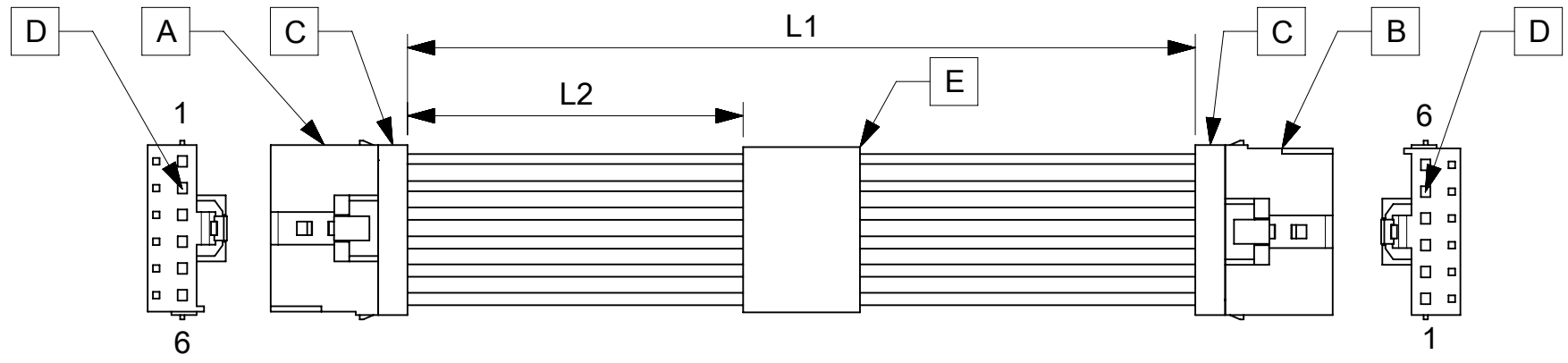


ITEM	MOLEX P/N	DESCRIPTION	QTY	UOM
A,B	2074580006	L1NK 396 Receptacle Housing -1X6	2	PC
C	2074590006	L1NK 396 TPA -1X6	2	PC
D	455703002	KKGen2 156 Tin/nickel Crimp 18-20 FORMED	12	PC
E	-	LABEL	1	PC

FROM	TO	CABLE DESCRIPTION	COLOR
A1	B6	18AWG PVC BK UL1015 HOOKUP WIRE	BLACK
A2	B5		
A3	B4		
A4	B3		
A5	B2		
A6	B1		



PART NUMBER	L1	L2	TITLE
369210600	75±5	25REF	Link396 6 Circuit 75MM
369210602	150±10	63REF	Link396 6 Circuit 150MM
369210603	300±15	138REF	Link396 6 Circuit 300MM
369210610	1000±20	488REF	Link396 6 Circuit 1000MM

- NOTES**
- Cable assembly must pass 100% continuity and polarity test.
 - Label text must be 2mm max. In height with Arial font.
 - Connector view shown is from mating side.

P/N:36921XXXX — MOLEX PN
 MOLEX
 BATCH WK/YR

DATE	REV	DESCRIPTION	REVISED BY
2019.03.27	A	INITIAL RELEASE	SSHIVASHANKA

SYMBOLS				THIS DRAWING CONTAINS INFORMATION THAT IS PROPRIETARY TO MOLEX ELECTRONIC TECHNOLOGIES, LLC AND SHOULD NOT BE USED WITHOUT WRITTEN PERMISSION			
▽ = 0	△ = 0	▽ = 0	▽ = 0	DIMENSION UNITS	SCALE	CURRENT REV DESC:	
▽ = 0	▽ = 0	▽ = 0	▽ = 0	mm	NTS	GENERAL TOLERANCES (UNLESS SPECIFIED)	
▽ = 0	▽ = 0	▽ = 0	▽ = 0	ANGULAR TOL	±	°	EC NO: 616867
▽ = 0	▽ = 0	▽ = 0	▽ = 0	4 PLACES	±	DRWN: SSHIVASHANKA	2019/03/27
▽ = 0	▽ = 0	▽ = 0	▽ = 0	3 PLACES	±	CHK'D: MNARAYAN01	2019/05/08
▽ = 0	▽ = 0	▽ = 0	▽ = 0	2 PLACES	±	APPR: MNARAYAN01	2019/05/08
▽ = 0	▽ = 0	▽ = 0	▽ = 0	1 PLACE	±	INITIAL REVISION:	
▽ = 0	▽ = 0	▽ = 0	▽ = 0	0 PLACES	±	DRWN: SSHIVASHANKA	2019/03/27
▽ = 0	▽ = 0	▽ = 0	▽ = 0	DRAFT WHERE APPLICABLE MUST REMAIN WITHIN DIMENSIONS		THIRD ANGLE PROJECTION	DRAWING
▽ = 0	▽ = 0	▽ = 0	▽ = 0	SERIES		36921	DOCUMENT NUMBER
▽ = 0	▽ = 0	▽ = 0	▽ = 0	MATERIAL NUMBER		SEE TABLE	DOC TYPE
▽ = 0	▽ = 0	▽ = 0	▽ = 0	CUSTOMER		GENERAL MARKET	DOC PART
▽ = 0	▽ = 0	▽ = 0	▽ = 0	SHEET NUMBER		1 OF 1	REVISION
▽ = 0	▽ = 0	▽ = 0	▽ = 0	369210600		PSD	000
▽ = 0	▽ = 0	▽ = 0	▽ = 0	A		SEE TABLE	

DOCUMENT STATUS	P1	RELEASE DATE	2019/05/08	14:41:16
-----------------	----	--------------	------------	----------