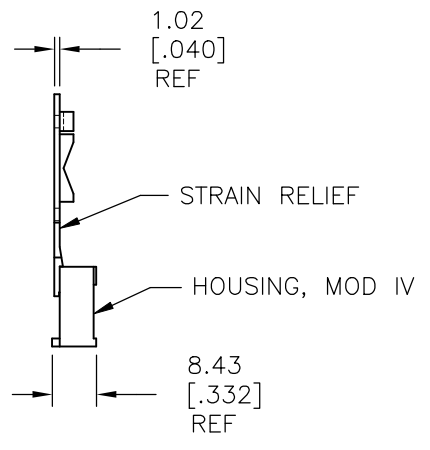
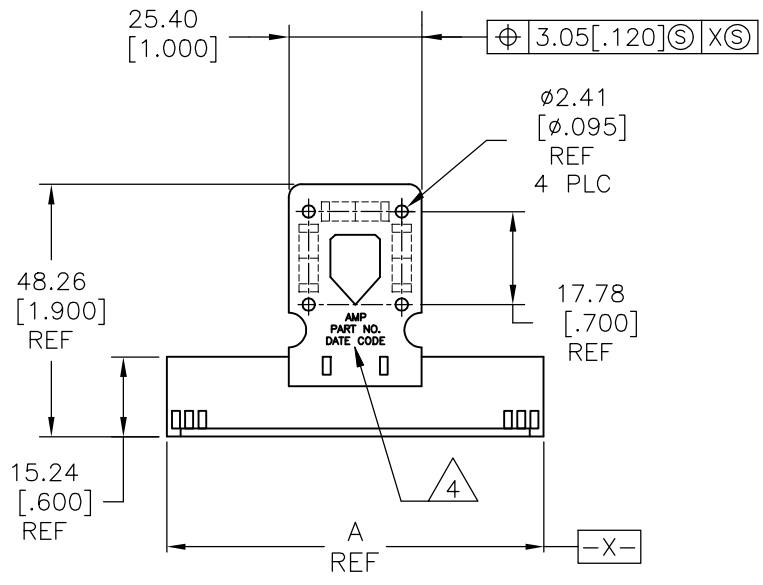
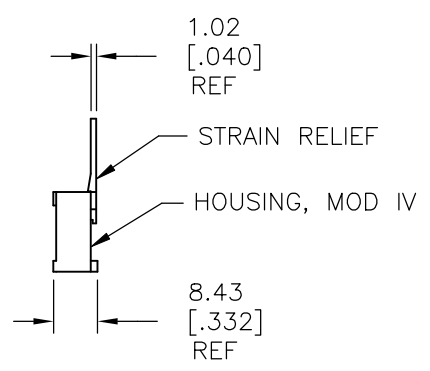
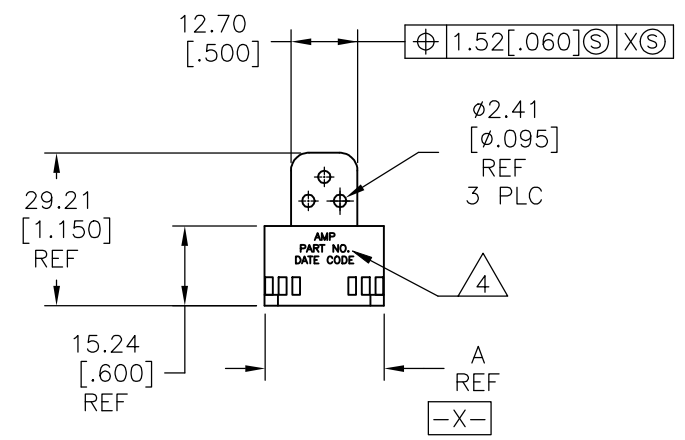


| REVISIONS | | | | |
|-----------|-----|---------------------------|-----------|------|
| P | LTR | DESCRIPTION | DATE | APVD |
| H | | OBS-8 PER 0010-0665-96 | 30DEC96 | JH |
| J | | REVISED PER ECO-17-015762 | 31OCT2017 | RS |
| K | | REVISED PER ECO-18-000976 | 13APR2018 | RS |

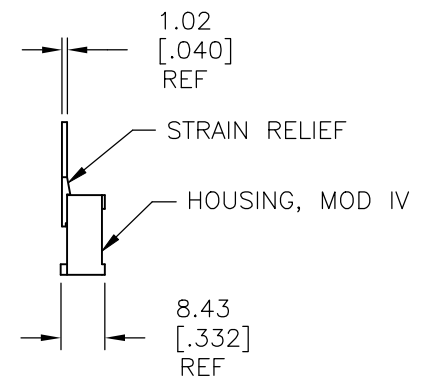
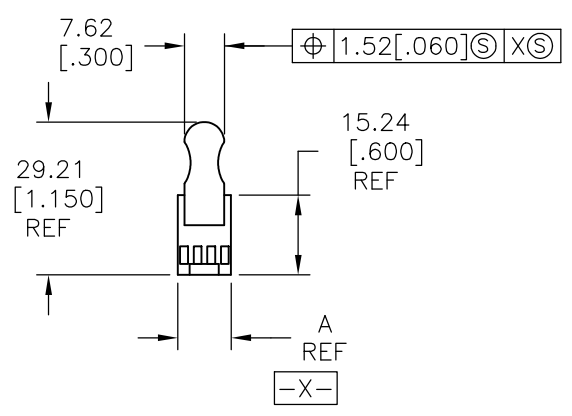
TYPE I



TYPE II



TYPE III



- 1 STRAIN RELIEF TO BE ULTRASONICALLY WELDED TO HOUSING.
 - 2 ASSEMBLIES 8 POSN AND SMALLER WILL NOT BE MARKED.
 - 3 NOTE DELETED.
- 4 'AMP', PART NO., AND DATE CODE MARKED IN AREA SHOWN.

| | | | |
|---|--|--------------------------------|---|
| THIS DRAWING IS A CONTROLLED DOCUMENT. | | DWN E. BRANDBERG 6-20-94 | TE Connectivity Ltd. |
| DIMENSIONS: mm [INCHES] | | CHK P. SREMCICH 6-20-94 | |
| TOLERANCES UNLESS OTHERWISE SPECIFIED: 0 PLC ± - 1 PLC ± - 2 PLC ± 0.13 [.005] 3 PLC ± - 4 PLC ± - ANGLES ± - | | APVD D. DUPLER 6-20-94 | |
| MATERIAL FLAME RETARDANT GLASS FILLED NYLON COLOR: BLACK | | FINISH - | NAME HOUSING ASSY, MOD IV, 2.54 [.100] X 2.54 [.100] Q . W/POL AND STRAIN RELIEF |
| CUSTOMER DRAWING | | SIZE A2 | CAGE CODE 00779 |
| | | DRAWING NO C-102184 | RESTRICTED TO - |
| | | SCALE 1:1 | SHEET 1 OF 2 |
| | | | REV K |

THIS DRAWING IS UNPUBLISHED. RELEASED FOR PUBLICATION
 © COPYRIGHT - TE Connectivity ALL RIGHTS RESERVED.

| REVISIONS | | | | | |
|-----------|-----|-------------|------|-----|------|
| P | LTR | DESCRIPTION | DATE | DWN | APVD |
| - | - | SEE SHEET 1 | - | - | - |

| NONE | I | 81.28[3.200] | 6-87977-2 | 64 | 6-102184-2 |
|---------|------|--------------|------------------|--------------|-------------|
| ALL | I | 81.28[3.200] | 6-87977-2 | 64 | 6-102184-1 |
| NONE | I | 73.66[2.900] | 6-87977-0 | 58 | 6-102184-0 |
| ALL | I | 73.66[2.900] | 6-87977-0 | 58 | 5-102184-9 |
| NONE | I | 71.12[2.800] | 5-87977-8 | 56 | 5-102184-8 |
| ALL | I | 71.12[2.800] | 5-87977-8 | 56 | 5-102184-7 |
| NONE | I | 60.96[2.400] | 5-87977-6 | 48 | 5-102184-6 |
| ALL | I | 60.96[2.400] | 5-87977-6 | 48 | 5-102184-5 |
| NONE | I | 91.44[3.600] | 5-87977-4 | 72 | 5-102184-4 |
| NONE | I | 88.90[3.500] | 5-87977-3 | 70 | 5-102184-3 |
| NONE | I | 83.82[3.300] | 5-87977-2 | 66 | 5-102184-2 |
| NONE | I | 76.20[3.000] | 5-87977-1 | 60 | 5-102184-1 |
| NONE | I | 68.58[2.700] | 5-87977-0 | 54 | 5-102184-0 |
| NONE | I | 66.04[2.600] | 4-87977-9 | 52 | 4-102184-9 |
| NONE | I | 63.50[2.500] | 4-87977-8 | 50 | 4-102184-8 |
| NONE | I | 55.88[2.200] | 4-87977-7 | 44 | 4-102184-7 |
| NONE | I | 53.34[2.100] | 4-87977-6 | 42 | 4-102184-6 |
| NONE | I | 50.80[2.000] | 4-87977-5 | 40 | 4-102184-5 |
| NONE | I | 48.26[1.900] | 4-87977-4 | 38 | 4-102184-4 |
| NONE | I | 45.72[1.800] | 4-87977-3 | 36 | 4-102184-3 |
| NONE | I | 43.18[1.700] | 4-87977-2 | 34 | 4-102184-2 |
| NONE | I | 40.64[1.600] | 4-87977-1 | 32 | 4-102184-1 |
| NONE | I | 38.10[1.500] | 4-87977-0 | 30 | 4-102184-0 |
| NONE | I | 35.56[1.400] | 3-87977-9 | 28 | 3-102184-9 |
| NONE | I | 33.02[1.300] | 3-87977-8 | 26 | 3-102184-8 |
| NONE | I | 30.48[1.200] | 3-87977-7 | 24 | 3-102184-7 |
| NONE | I | 27.94[1.100] | 3-87977-6 | 22 | 3-102184-6 |
| NONE | I | 25.40[1.000] | 3-87977-5 | 20 | 3-102184-5 |
| NONE | II | 22.86[.900] | 3-87977-4 | 18 | 3-102184-4 |
| NONE | II | 20.32[.800] | 3-87977-3 | 16 | 3-102184-3 |
| NONE | II | 17.78[.700] | 3-87977-2 | 14 | 3-102184-2 |
| MARKING | TYPE | A | HOUSING PART NO. | NO. OF POSN. | PART NUMBER |

| NONE | II | 15.24[.600] | 3-87977-1 | 12 | 3-102184-1 |
|---------|------|--------------|------------------|--------------|-------------|
| NONE | II | 12.76[.500] | 3-87977-0 | 10 | 3-102184-0 |
| NONE | III | 10.16[.400] | 2-87977-9 | 8 | 2-102184-9 |
| NONE | III | 7.62[.300] | 2-87977-8 | 6 | 2-102184-8 |
| ALL | I | 91.44[3.600] | 5-87977-4 | 72 | 2-102184-7 |
| ALL | I | 88.90[3.500] | 5-87977-3 | 70 | 2-102184-6 |
| ALL | I | 83.82[3.300] | 5-87977-2 | 66 | 2-102184-5 |
| ALL | I | 76.20[3.000] | 5-87977-1 | 60 | 2-102184-4 |
| ALL | I | 68.58[2.700] | 5-87977-0 | 54 | 2-102184-3 |
| ALL | I | 66.04[2.600] | 4-87977-9 | 52 | 2-102184-2 |
| ALL | I | 63.50[2.500] | 4-87977-8 | 50 | 2-102184-1 |
| ALL | I | 55.88[2.200] | 4-87977-7 | 44 | 2-102184-0 |
| ALL | I | 53.34[2.100] | 4-87977-6 | 42 | 1-102184-9 |
| ALL | I | 50.80[2.000] | 4-87977-5 | 40 | 1-102184-8 |
| ALL | I | 48.26[1.900] | 4-87977-4 | 38 | 1-102184-7 |
| ALL | I | 45.72[1.800] | 4-87977-3 | 36 | 1-102184-6 |
| ALL | I | 43.18[1.700] | 4-87977-2 | 34 | 1-102184-5 |
| ALL | I | 40.64[1.600] | 4-87977-1 | 32 | 1-102184-4 |
| ALL | I | 38.10[1.500] | 4-87977-0 | 30 | 1-102184-3 |
| ALL | I | 35.56[1.400] | 3-87977-9 | 28 | 1-102184-2 |
| ALL | I | 33.02[1.300] | 3-87977-8 | 26 | 1-102184-1 |
| ALL | I | 30.48[1.200] | 3-87977-7 | 24 | 1-102184-0 |
| ALL | I | 27.94[1.100] | 3-87977-6 | 22 | 102184-9 |
| ALL | I | 25.40[1.000] | 3-87977-5 | 20 | 102184-8 |
| ALL | II | 22.86[.900] | 3-87977-4 | 18 | 102184-7 |
| ALL | II | 20.32[.800] | 3-87977-3 | 16 | 102184-6 |
| ALL | II | 17.78[.700] | 3-87977-2 | 14 | 102184-5 |
| ALL | II | 15.24[.600] | 3-87977-1 | 12 | 102184-4 |
| ALL | II | 12.70[.500] | 3-87977-0 | 10 | 102184-3 |
| ALL | III | 10.16[.400] | 2-87977-9 | 8 | 102184-2 |
| ALL | III | 7.62[.300] | 2-87977-8 | 6 | 102184-1 |
| MARKING | TYPE | A | HOUSING PART NO. | NO. OF POSN. | PART NUMBER |

D
C
B
A

D
C
B
A

| | | | | | |
|--|--|-----------------------------|--|--|--|
| THIS DRAWING IS A CONTROLLED DOCUMENT. | | DWN 6-20-94 E. BRANDBERG | | TE Connectivity Ltd. | |
| DIMENSIONS: mm [INCHES] | | CHK 6-20-94 P. SREMCICH | | NAME | |
| TOLERANCES UNLESS OTHERWISE SPECIFIED: 0 PLC ± - 1 PLC ± - 2 PLC ± 0.13[.005] 3 PLC ± - 4 PLC ± - ANGLES ± - | | APVD 6-20-94 D. DUPLER | | PRODUCT SPEC - APPLICATION SPEC - | |
| MATERIAL FLAME RETARDENT GLASS FILLED NYLON COLOR: BLACK | | FINISH - | | WEIGHT A2 00779 C-102184 | |
| CUSTOMER DRAWING | | | | RESTRICTED TO - | |
| SCALE 1:1 | | | | SHEET 2 OF 2 REV K | |