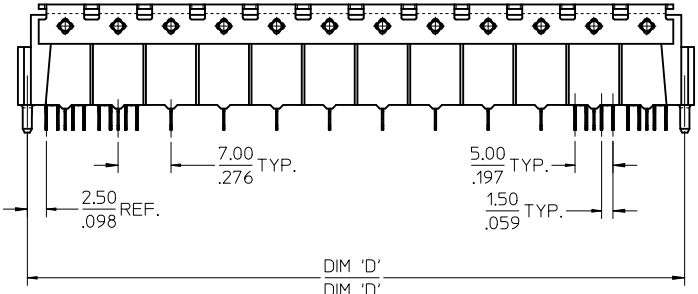
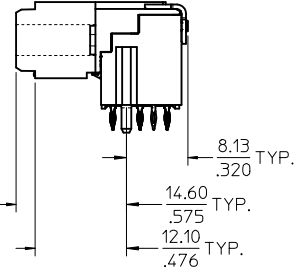


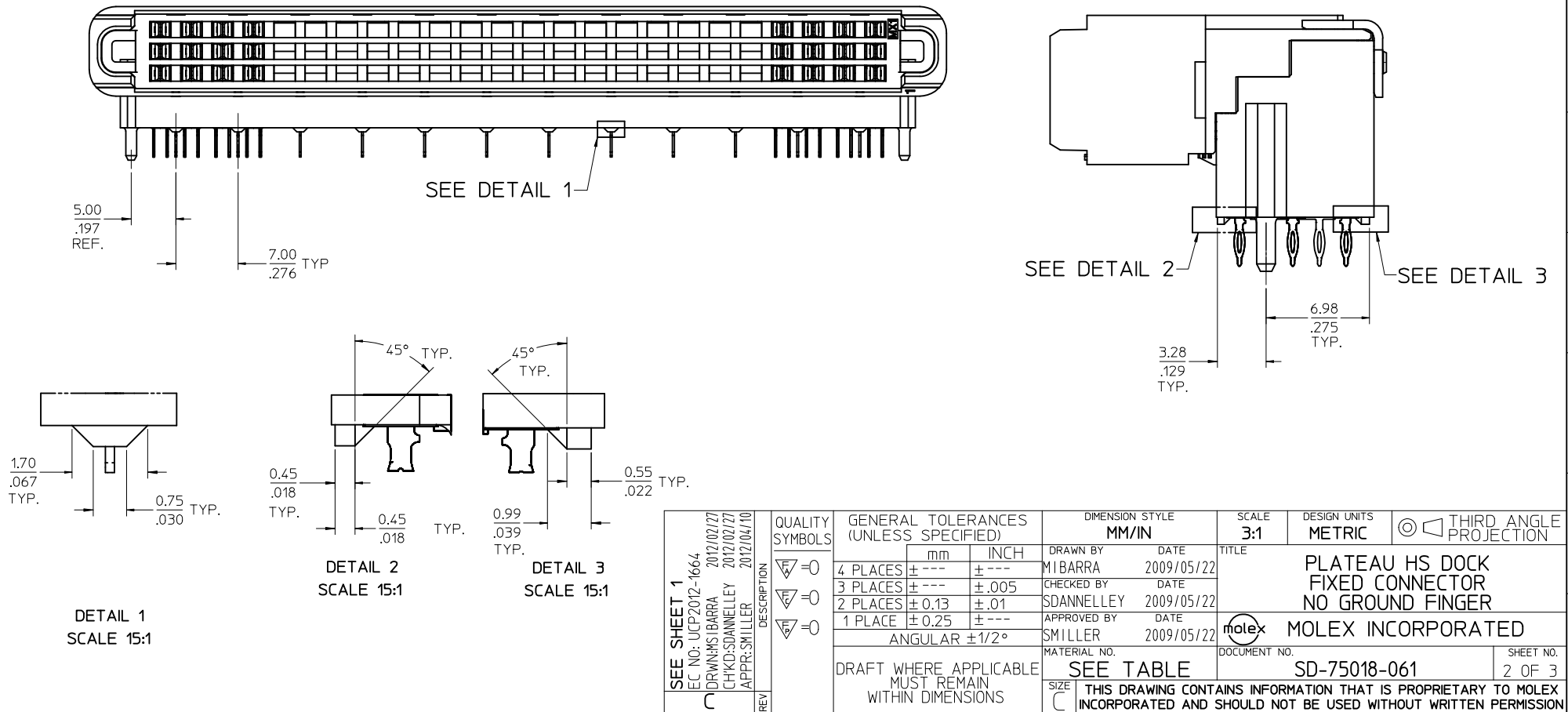
- NOTES:**
- MATERIALS:**
 HOUSING - LIQUID CRYSTAL POLYMER, UL94 V-0
 WAFER DIELECTRIC - LIQUID CRYSTAL POLYMER, UL94 V-0
 CONTACT - COPPER ALLOY
 - FINISHES:**
CONTACT INTERFACE
 0.76 MICROMETER MINIMUM SELECT GOLD
 1.27 MICROMETER MINIMUM NICKEL OVERALL
COMPLIANT INTERFACE
 0.76 MICROMETER MINIMUM SELECT TIN-LEAD OVER
 1.27 MICROMETER MINIMUM NICKEL OVERALL
HOUSING
 0.10 MICROMETER MAXIMUM IMMERSION GOLD OVER
 3.81 MICROMETER MINIMUM NICKEL OVER
 3.81 MICROMETER MINIMUM COPPER OVERALL
 - PRODUCT SPECIFICATION:** THIS PART CONFORMS TO MOLEX SPECIFICATION PS-75018-001.
 - PACKAGING SPECIFICATION:** THIS PART TO BE PACKAGED PER SPECIFICATION PK-75020-030.
 - APPLICATION SPECIFICATION:** THIS PART TO BE APPLIED PER SPECIFICATION PS-75018-001. APPLICATION TOOL AND INSTRUCTIONS PER AS-75018-001.
 - MATING INFORMATION**
 THIS PART MATES WITH 75019-XXXX.
 WILL MATE WITH MAXIMUM 1.27mm MIS-ALIGNMENT.
 WILL MATE WITH MAXIMUM 0.5° MIS-ALIGNMENT.
 - FOR CIRCUIT DESIGNATION** SEE SHEET 3
 - FOR PCB INFORMATION** SEE SHEET 3
 - CIRCUITS IN THIS ZONE** HAVE BEEN OMITTED TO SIMPLIFY THE MODEL. ACTUAL PRODUCT IS FULLY LOADED WITH TERMINALS.
 - APPLICATION TOOLING** KEEP OUT AREA. NO COMPONENTS ALLOWED IN THIS AREA.
 - CONFORMS TO MOLEX COSMETIC SPECIFICATION** PS-45499-002 AND PS-45499-003, CLASS C.
 - MARKING:** PART NUMBER, MOLEX LOGO, DATE CODE
 - RECOMMENDED DRILL SIZE** 0.66±0.03 TO YIELD FINISHED PLATED THROUGH HOLE OF 0.55±0.05

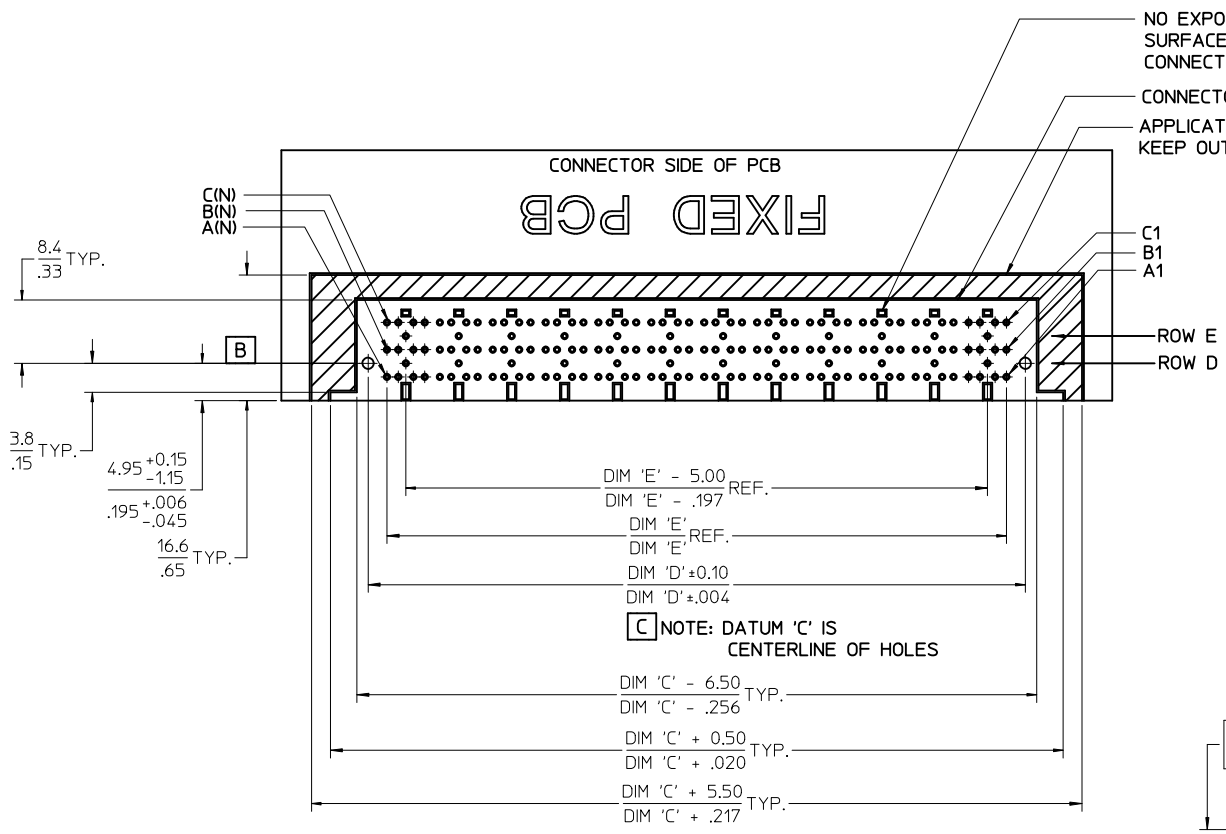


MODIFY PACKAGING SPEC EC NO: UCP2012-1664 DRW:MS BARRA 2012/02/27 CHKD:SDANNELLEY 2012/02/27 APPR:SMILLER 2012/04/10	QUALITY SYMBOLS 	GENERAL TOLERANCES (UNLESS SPECIFIED)		DIMENSION STYLE MM/IN		SCALE 2:1	DESIGN UNITS METRIC	THIRD ANGLE PROJECTION			
		4 PLACES ± --- ± --- 3 PLACES ± --- ± .005 2 PLACES ± 0.13 ± .01 1 PLACE ± 0.25 ± ---	mm INCH ± --- ± --- ± .005 ± .005 ± 0.13 ± .01 ± 0.25 ± ---	DRAWN BY MIBARRA	DATE 2009/05/22	TITLE PLATEAU HS DOCK FIXED CONNECTOR NO GROUND FINGER		MOLEX INCORPORATED			
		ANGULAR ±1/2°		CHECKED BY SDANNELLEY	DATE 2009/05/22	APPROVED BY SMILLER		DATE 2009/05/22	MATERIAL NO. SEE TABLE		DOCUMENT NO. SD-75018-061
		DRAFT WHERE APPLICABLE MUST REMAIN WITHIN DIMENSIONS		SIZE C		THIS DRAWING CONTAINS INFORMATION THAT IS PROPRIETARY TO MOLEX INCORPORATED AND SHOULD NOT BE USED WITHOUT WRITTEN PERMISSION		SHEET NO. 1 OF 3			

ITEM NUMBER	CIRCUIT SIZE	NO. OF COLUMNS 'N'	CENTERLINE DIMENSION 'A' mm(in)	O/A HEIGHT DIMENSION 'B' mm(in)	O/A LENGTH DIMENSION 'C' mm(in)	PEG TO PEG DIMENSION 'D' mm(in)	FIRST-LAST DIMENSION 'E' mm(in)	WALL TO WALL DIMENSION 'F' mm(in)
75018-6016	120	40	4.74 (.187)	9.78 (.385)	82.50 (3.248)	73.00 (2.874)	68.00 (2.677)	72.30 (2.846)
75018-6021	144	48	4.74 (.187)	9.78 (.385)	96.50 (3.799)	87.00 (3.425)	82.00 (3.228)	86.32 (3.398)
75018-6022	144	48	5.74 (.226)	10.78 (.424)	96.50 (3.799)	87.00 (3.425)	82.00 (3.228)	86.32 (3.398)
75018-6023	144	48	8.74 (.344)	13.78 (.543)	96.50 (3.799)	87.00 (3.425)	82.00 (3.228)	86.32 (3.398)
75018-6026	120	40	4.74 (.187)	9.78 (.385)	82.50 (3.248)	73.00 (2.874)	68.00 (2.677)	72.30 (2.846)
75018-6025	108	36	8.74 (.344)	13.78 (.543)	75.50 (2.972)	66.00 (2.598)	61.00 (2.402)	65.29 (2.570)
75018-6027	108	36	5.74 (.226)	10.78 (.424)	75.50 (2.972)	66.00 (2.598)	61.00 (2.402)	65.29 (2.570)
75018-6029	120	40	5.74 (.226)	10.78 (.424)	82.50 (3.248)	73.00 (2.874)	68.00 (2.677)	72.30 (2.846)

NOTE: THIS ITEM NUMBER HAS ONLY SIGNAL PINS





NO EXPOSED TRACES ON SURFACE OF PCB IN CONNECTOR STAND OFF LOCATIONS
 CONNECTOR KEEP OUT AREA
 APPLICATION TOOLING KEEP OUT AREA (NOTES 5 & 10)

CIRCUIT DESIGNATION

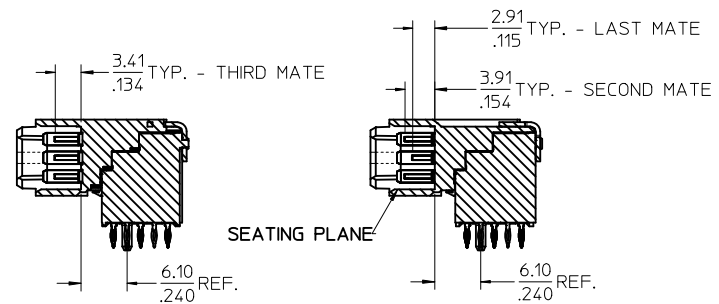
FIRST MATE: HOUSING - SIGNAL GROUND
 SECOND MATE: A1, C1, A(N), C(N) (FOR POWER RETURN)
 THIRD MATE: A2, B2, C2, A(N-1), B(N-1), C(N-1) & ALL OTHERS (A2, C2, A(N-1) & C(N-1) FOR POWER) (ALL OTHERS SIGNAL)
 LAST MATE: B1, B(N) (FOR CARD DETECT)

ALL COLUMNS FROM 3 THROUGH (N-2) ARE SUITABLE FOR DIFFERENTIAL PAIRS
 EG: A3-A4, B3-B4, C3-C4, A(N-2)-A(N-3), B(N-2)-B(N-3)

SIGNAL GROUND: ROWS D & E

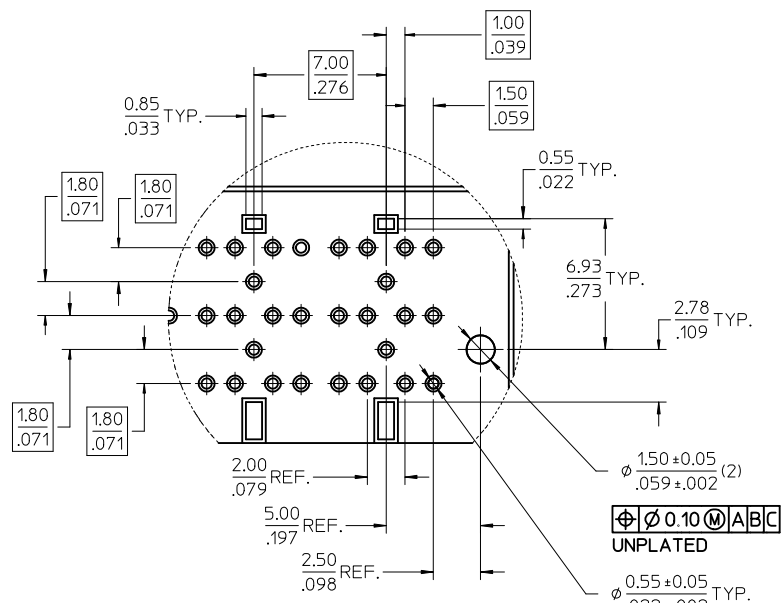
NOMINAL WIPE - FULL SEATED

FIRST MATE: 5.2mm
 SECOND MATE: 2.7mm
 THIRD MATE: 2.2mm
 LAST MATE: 1.7mm



SECTION Y-Y

SECTION Z-Z



DETAIL X
 SCALE 5:1

$\phi 0.10 \text{ (M) ABC}$
 UNPLATED
 $\phi 0.55 \pm 0.05 \text{ TYP.}$
 $\phi 0.22 \pm 0.02$
 $\phi 0.10 \text{ (M) ABC}$
 PLATED
 SEE NOTE 13

SEE SHEET 1 EC NO: UCP2012-1664 DRAWN: MIBARRA 2012/02/27 CHKD: SDANNELLEY 2012/02/27 APPR: SMILLER 2012/04/10	QUALITY SYMBOLS ▽=0 ▽=0 ▽=0	GENERAL TOLERANCES (UNLESS SPECIFIED)		DIMENSION STYLE MM/IN		SCALE 2:1	DESIGN UNITS METRIC	THIRD ANGLE PROJECTION	
						TITLE PLATEAU HS DOCK FIXED CONNECTOR NO GROUND FINGER		MATERIAL NO. SD-75018-061	
				DRAWN BY MIBARRA		DATE 2009/05/22		SHEET NO. 3 OF 3	
				CHECKED BY SDANNELLEY		DATE 2009/05/22		DOCUMENT NO. SD-75018-061	
				APPROVED BY SMILLER		DATE 2009/05/22		MATERIAL NO. SD-75018-061	
				ANGULAR $\pm 1/2^\circ$		SIZE SEE TABLE		THIS DRAWING CONTAINS INFORMATION THAT IS PROPRIETARY TO MOLEX INCORPORATED AND SHOULD NOT BE USED WITHOUT WRITTEN PERMISSION	
				DRAFT WHERE APPLICABLE MUST REMAIN WITHIN DIMENSIONS					