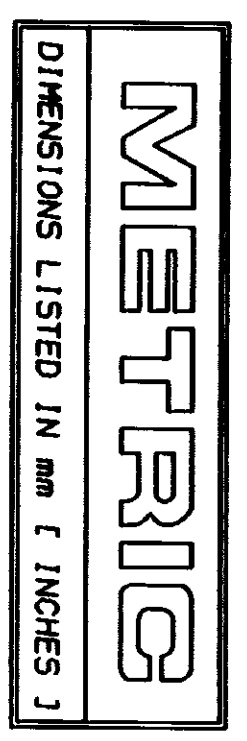
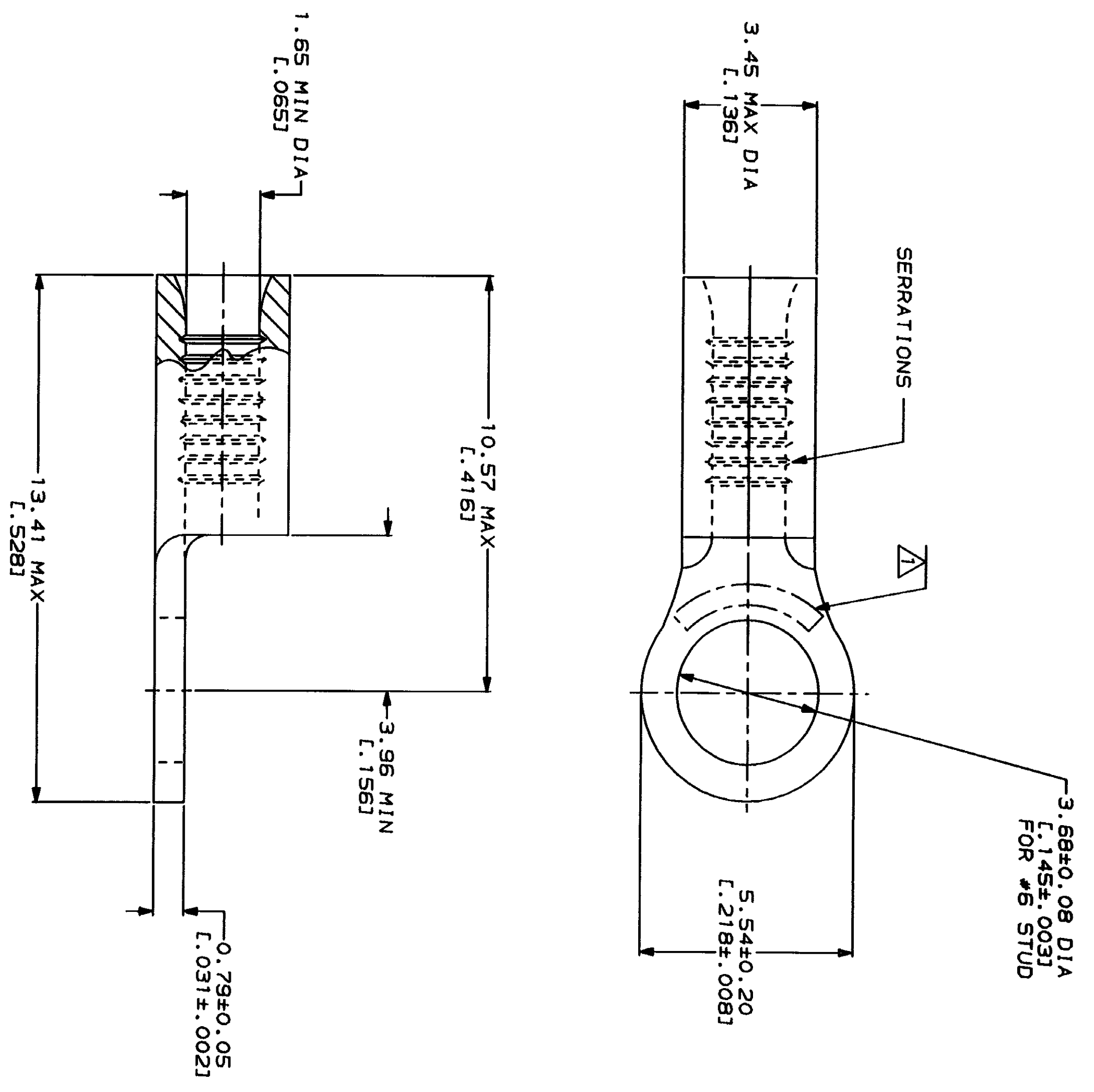


LOC	DIST	ZONE	LTR	DESCRIPTION	DATE	APPD
G	14			REVISED PER 0720-0230-93	2/25/94	DAV



AMP WIRE RANGE	UL E13288 Listed
22-16 AWG STRANDED	22-16 AWG STRANDED
LR7189 Certified	MILITARY P/N AND CLASS
NOT CERTIFIED	NOT APPLICABLE

STAMP AMP 22-18* APPROX AS SHOWN
 22-16 TERMINALS ARE STAMPED 22-18 IN
 ACCORDANCE WITH MILITARY SPECIFICATION
 MIL-T-7928, COMMERCIAL WIRE RANGE IS 22-16



AMP INCORPORATED CUSTOMER SERVICE SYSTEMS	MAX RECOMMENDED OPERATING TEMPERATURE: 170°C MAX	DO NOT SCALE PRINT. UNLESS SPECIFIED DIMENSIONS IN—(INCHES)— TOLERANCES ON: 2 PLC DEC ± 3 PLC DEC ± ANGLES PATERIAL
FOR ADDITIONAL PRODUCT INFORMATION OR COPIES OF DRAWINGS AND TECHNICAL DOCUMENTS 1-800-522-6752	VOLTAGE RATING: NOT APPLICABLE	DR 2-3-93 JA BRINKMAN CHK 2-3-93 DA PATTERSON
FOR APPLICATION TOOLING INFORMATION 1-800-722-1111	WIRE CROSS SECTIONAL AREA RANGE: 0.26-1.65mm ² [509-3,260] CIR MILS STRANDED	APPD 2-3-93 DE MILLER APPD 2-3-93 JL NECKLEY PRODUCT SPEC
FOR ORDER ENTRY 1-800-526-5142	THIS DRAWING IS A CONTROLLED DOCUMENT FOR AMP INCORPORATED. IT IS SUBJECT TO CHANGE WITHOUT NOTICE. THE LATEST REVISION SHOULD BE CONSULTED FOR THE LATEST REVISION.	FINISH TIN PLATE 0.00254L.0001001 MIN THK PER MIL-T-10727

AMP INCORPORATED CUSTOMER SERVICE SYSTEMS	AMP INCORPORATED Harrisburg, PA 17105-3508	NAME TERMINAL, RING TONGUE, BUDGET
31101 PART NO	31101	SCALE 10:1
00779 CAGE CODE	31101 DRAWING NO	SHEET 1 OF 1