

DO NOT  
SCALE FROM  
THIS PRINT

TABLE 1

ITEM	COMPONENT	-HN	-GN
1	HEX NUT	BTNC-NUT-001-N	
2	LOCK WASHER	BTNC-LWAS-001-N	
3	GASKET	BTNC-GKT-001	
4	SUB ASSEMBLY	SUB-BNC7T-J-C-N-ST-BH3	
5	SOCKET	BNC7T-SKT-003-H	BNC7T-SKT-003-G
6	INSULATOR	BNC7-INS-001	
7	INNER FERRULE	BTNC-FER-001-N	
8	OUTER FERRULE	BNC-FER-002-N	

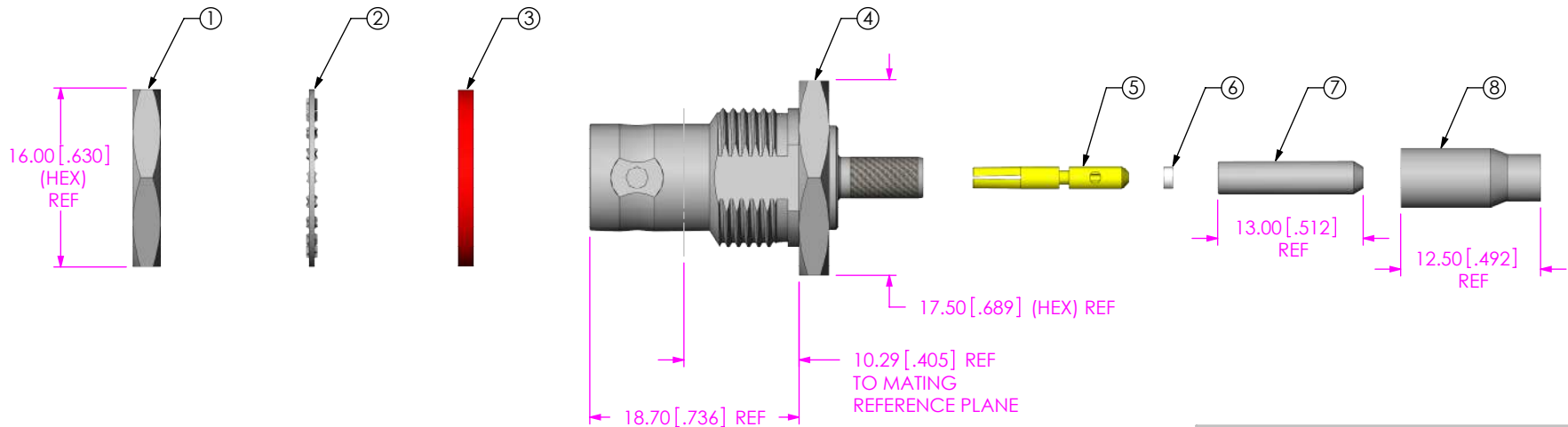
GENDER  
-J: JACK

TYPE  
-C: CABLE

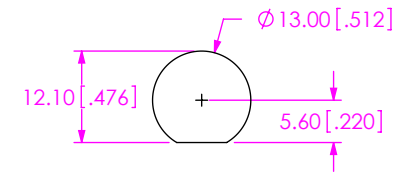
TERMINATION  
-BH3: BULKHEAD CABLE  
(RG179)

ORIENTATION  
-ST: STRAIGHT

PLATING SPECIFICATION  
-HN: 30µ" GOLD CENTER CONTACT,  
100µ" NICKEL OUTER CONTACT  
-GN: 10µ" GOLD CENTER CONTACT,  
100µ" NICKEL OUTER CONTACT  
(SEE TABLE 1)



RECOMMENDED MOUNTING HOLE  
4.00[.157] MAX PANEL THICKNESS



NOTES:

- NOTE DELETED.
- NOTE DELETED.
- NOTE DELETED.
- NOTE DELETED.
- PRODUCT TO BE BULK PACKAGED PER PACKAGING STANDARD CO-RF-WI-3040-M.
- NOTE DELETED.
- NOTE DELETED.
- NOTE DELETED.

UNLESS OTHERWISE SPECIFIED,  
DIMENSIONS ARE IN  
MILLIMETERS [INCHES].  
TOLERANCES ARE:

DECIMALS ANGLES  
.X: ±0.3 [.01] 5°  
.XX: ±0.13 [.005]  
.XXX: ±0.051 [.0020]

PROPRIETARY NOTE

THIS DOCUMENT CONTAINS CONFIDENTIAL AND PROPRIETARY INFORMATION AND ALL DESIGN, MANUFACTURING, REPRODUCTION, USE, PATENT RIGHTS AND SALES RIGHTS ARE EXPRESSLY RESERVED BY SAMTEC, INC. THIS DOCUMENT SHALL NOT BE DISCLOSED, IN WHOLE OR PART, TO ANY UNAUTHORIZED PERSON OR ENTITY NOR REPRODUCED, TRANSFERRED OR INCORPORATED IN ANY OTHER PROJECT IN ANY MANNER WITHOUT THE EXPRESS WRITTEN CONSENT OF SAMTEC, INC.

MATERIAL: DO NOT SCALE DRAWING SHEET SCALE: 2:1  
SHELL, FERRULES, NUT, WASHER: BRASS  
CONTACT: COPPER ALLOY  
DIELECTRIC: PTFE  
GASKET: SILICONE

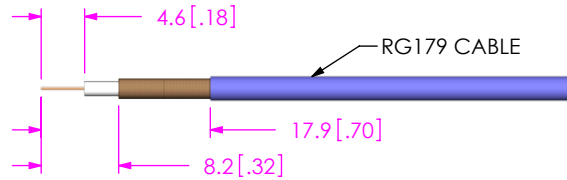


520 PARK EAST BLVD, NEW ALBANY, IN 47150  
PHONE: 812-944-6733 FAX: 812-948-5047  
e-Mail: info@SAMTEC.com code: 55322

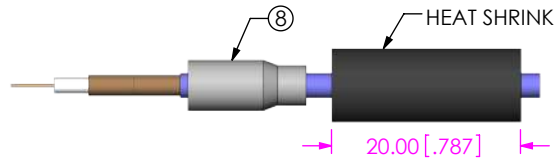
DESCRIPTION:  
TRUE 75 OHM, BNC STRAIGHT JACK, RG 179

DWG. NO.  
BNC7T-J-C-XX-ST-BH3

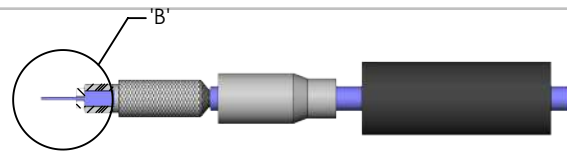
BY: G HERMAN 06/25/2008 SHEET 1 OF 2



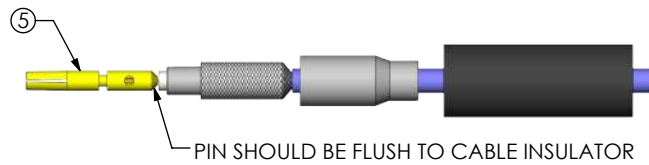
IN PROCESS 1  
STRIP CABLE AND TIN INNER  
CONDUCTOR



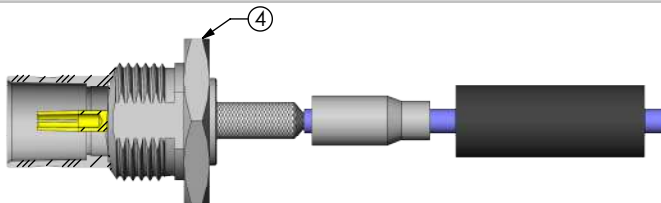
IN PROCESS 2  
ADD HEAT SHRINK  
TUBING AND OUTER FERRULE



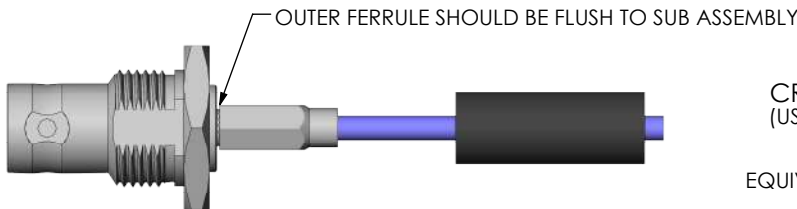
IN PROCESS 3  
FLARE SHIELD, ADD INNER  
FERRULE AND INSULATOR



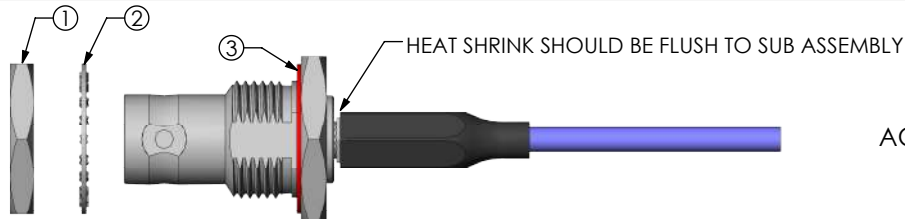
IN PROCESS 4  
SOLDER SIGNAL SOCKET



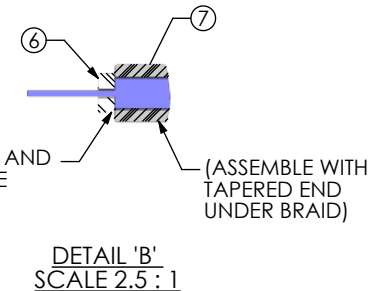
IN PROCESS 5  
FLARE SHIELD &  
ADD SUB ASSEMBLY



IN PROCESS 6  
CRIMP OUTER FERRULE  
(USE RF CRIMP HAND TOOL  
#CAT-RF-FER-01  
OR  
EQUIVALENT AND .178" DIE SIZE)



IN PROCESS 7  
ACTIVATE HEAT SHRINK  
& ADD GASKET



INSULATOR WASHER AND  
INNER FERRULE TO BE  
FLUSH WITH CABLE  
DIELECTRIC

F:\DWG\MISC\MKTG\BNC7T-J-C-XX-ST-BH3-MKT.SLDDRW

**PROPRIETARY NOTE**  
THIS DOCUMENT CONTAINS CONFIDENTIAL AND  
PROPRIETARY INFORMATION AND ALL DESIGN,  
MANUFACTURING, REPRODUCTION, USE, PATENT RIGHTS  
AND SALES RIGHTS ARE EXPRESSLY RESERVED BY SAMTEC,  
INC. THIS DOCUMENT SHALL NOT BE DISCLOSED, IN WHOLE  
OR PART, TO ANY UNAUTHORIZED PERSON OR ENTITY NOR  
REPRODUCED, TRANSFERRED OR INCORPORATED IN ANY  
OTHER PROJECT IN ANY MANNER WITHOUT THE EXPRESS  
WRITTEN CONSENT OF SAMTEC, INC.

**samtec**  
520 PARK EAST BLVD, NEW ALBANY, IN 47150  
PHONE: 812-944-6733 FAX: 812-948-5047  
e-Mail: info@SAMTEC.com code: 55322

DO NOT SCALE DRAWING

SHEET SCALE: 5:4

DESCRIPTION:  
TRUE 75 OHM, BNC STRAIGHT JACK, RG 179

DWG. NO.  
**BNC7T-J-C-XX-ST-BH3**

BY: G HERMAN 06/25/2008 SHEET 2 OF 2