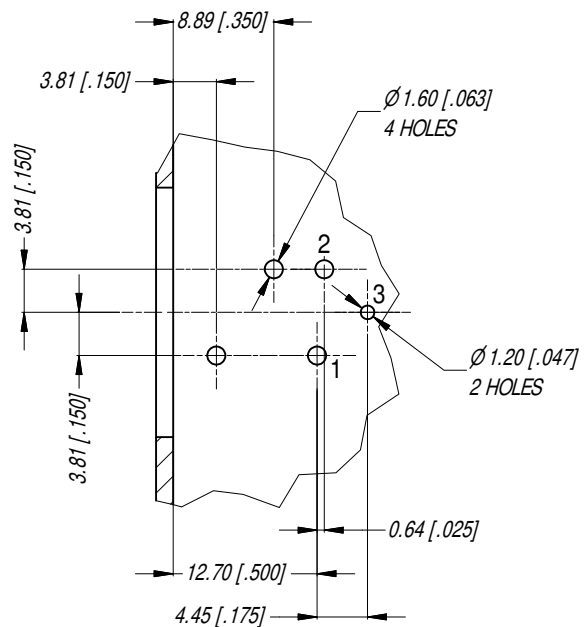


MIN MOUNTING PITCH (1:1)

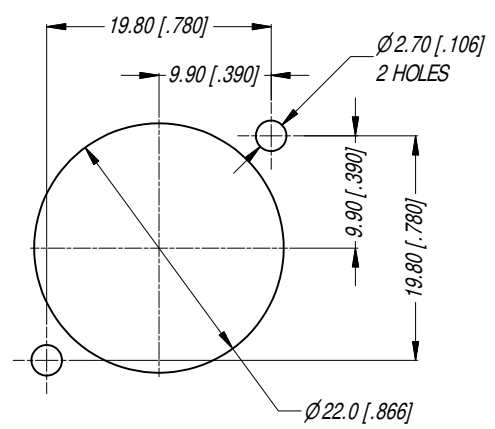


PCB LAYOUT

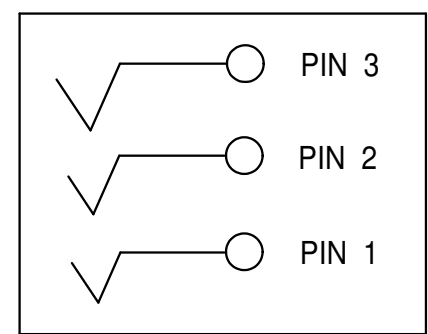
TOLERANCE : ± 0.05 [0.002 in]

NOTE: DIMS IN PARENTHESES ARE IN INCHES

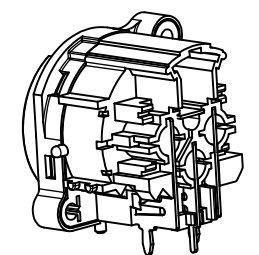
NOTE: SUFFIX "B" IN THE PART No. INDICATES BULK PACK



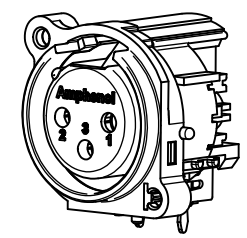
PANEL CUT OUT
REAR VIEW



SCHEMATIC CHART



3D VIEW (1:1)



REV	DESCRIPTION	DATE	BY	CHG NO
2	ADD SUFFIX TO PART No.	27/08/15	T.N	9318
1	UPDATE FEMALE SHELL	2/4/2009	A.O	8793
0	FIRST ISSUE	18/04/07	T.N	8686

REVISION HISTORY

UNLESS OTHERWISE SPECIFIED TOLERANCE TO BE:		THIS DOCUMENT IS THE PROPERTY OF AMPHENOL AUSTRALIA PTY. LTD. NO PART THEREOF MAY BE REPRODUCED AND USED WITHOUT THE PRIOR WRITTEN CONSENT OF THE OWNER			
LINEAR	ANGULAR	CAD FILE	DRN:	T.N	DATE:
X ±	X° ± 1	55010489000221	CKD:	P.M	17/04/07
X.X ±	X.X° ± 30°		APPD:	P.M	07/04/09
X.XX ±	X.XX° ± 15°		SCALE:	3:2	
BREAK ALL SHARP EDGES AND REMOVE ALL BURRS		MATL:	REFER TO COMPONENTS	DATE:	07/04/09
DO NOT SCALE		FINISH:	REFER TO COMPONENTS	DATE:	07/04/09
DIMENSIONS IN MILLIMETRES		THIRD ANGLE PROJECTION	PART No:	AC3FBHL-AU-B	SIZE: A4

TITLE:
**XLR FEMALE
B TYPE CONNECTOR**
CUSTOMER DWG

Amphenol

Amphenol Australia Pty.Ltd. 2 Fiveways Blvd. Keysborough, Vic3173

DRAWING NO. 55010489-000-2 SHEET 2/2