

ITEM	PART#	DESCRIPTION	QTY	UOM
A	22013067	100KKTermHsg W/LRamp W/PoR6Ckt 2695-06RP	1	PC
B	8500113	KK 100 Crp Term Std 22-30 Awg Tin	6	PC
C	--	PAPER PRINTED PAPER WHITE	1	PC

FROM	TO	DESCRIPTION	COLOR
A1	--	1X22AWG DISC MPPE BK UL11028	BLACK
A2	--	1X22AWG DISC MPPE BK UL11028	BLACK
A3	--	1X22AWG DISC MPPE BK UL11028	BLACK
A4	--	1X22AWG DISC MPPE BK UL11028	BLACK
A5	--	1X22AWG DISC MPPE BK UL11028	BLACK
A6	--	1X22AWG DISC MPPE BK UL11028	BLACK

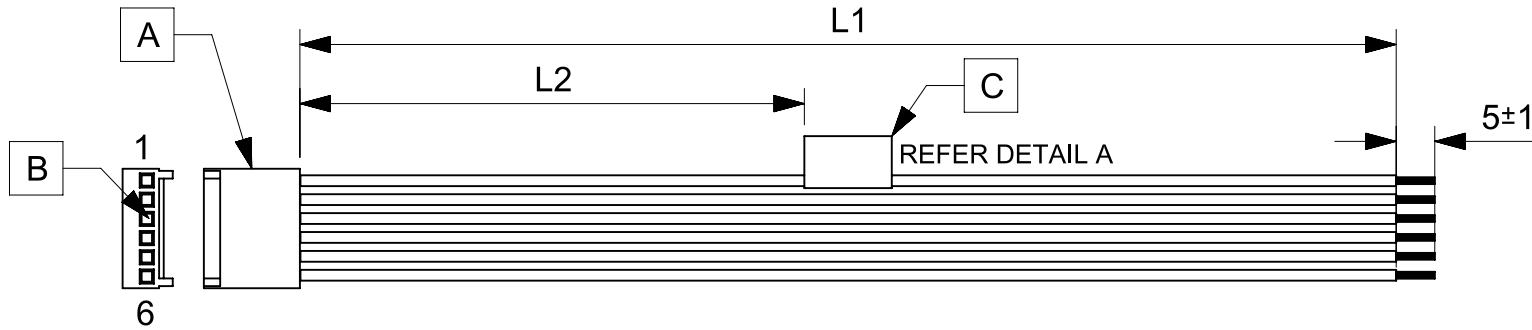


TABLE			
PART NUMBER	L1	L2	TITLE
2177971061	150±8	63 REF	KK 2.54 SR R-S 6CKT 150MM DISC Sn
2177971062	300±10	138 REF	KK 2.54 SR R-S 6CKT 300MM DISC Sn
2177971063	600±10	288 REF	KK 2.54 SR R-S 6CKT 600MM DISC Sn

NOTES

1. Connector view shown is from mating side.
2. Free ends must be stripped, twisted & tinned. The length of tinning is 5±1mm. Tinning dia must be 0.9mm Max.
3. Label text must be 2mm max. in height with Arial font.
4. Label must be wrapped in Flag type on a single cable.

MOLEX P/N
MOLEX
BATCH WK/YR
DETAIL A

REVISION			
DATE	REV	DESCRIPTION	CHANGER
11/01/2021	A	INITIAL RELEASE	ARAJU

FUNCTIONAL SYMBOLS FA = 0 FE = 0 FP = 0	THIS DRAWING CONTAINS INFORMATION THAT IS PROPRIETARY TO MOLEX ELECTRONIC TECHNOLOGIES, LLC AND SHOULD NOT BE USED WITHOUT WRITTEN PERMISSION		CURRENT REV DESC:					
	DIMENSION UNITS	SCALE	GENERAL TOLERANCES (UNLESS SPECIFIED)					
	mm	NTS	ANGULAR TOL ± °					
	4 PLACES ±		EC NO: 652805					
DIVISIONAL SYMBOLS	3 PLACES ±		DRWN: ARAJU 2021/01/09		<p>SEE TABLE</p> <p>PRODUCT CUSTOMER DRAWING</p>			
	2 PLACES ±		CHK'D: RDESAI01 2021/01/11					
	1 PLACE ±		APPR: RDESAI01 2021/01/11					
	0 PLACES ±		INITIAL REVISION:					
DRAFT WHERE APPLICABLE MUST REMAIN WITHIN DIMENSIONS		THIRD ANGLE PROJECTION	DRAWING	SERIES	DOCUMENT NUMBER	DOC TYPE	DOC PART	REVISION
			A4-SIZE	217797	2177971061	PSD	000	A
					MATERIAL NUMBER	CUSTOMER		SHEET NUMBER
					SEE TABLE	GENERAL MARKET		1 OF 1

DOCUMENT STATUS	P1	RELEASE DATE	2021/01/11	10:46:56
-----------------	----	--------------	------------	----------