



1230 MHz Ceramic Bandpass Filter

Part Number: AM1230B1203

ANATECH ELECTRONICS INC
RF & Microwave Filters & Products



Electrical specifications

Center Frequency: 1230 MHz
Bandwidth: 120 MHz
VSWR: 2.0 : 1 min
Input / Output Impedance: 50 Ohms
Passband: 1170-1290 MHz
Passband Insertion Loss: 1.0 dB max
Passband Ripple: 0.5dB max
Rejection:
Rejection 2:
Power Handling: 1 W

Mechanical

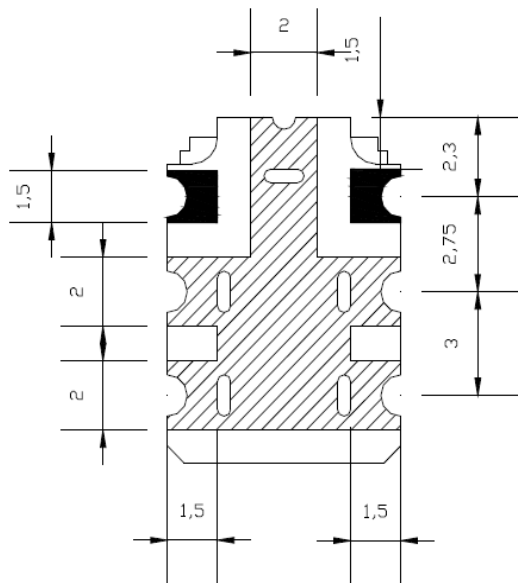
Mounting Method: SMT
Dimensions: 10 x 7 x 3.6 mm

Environmental

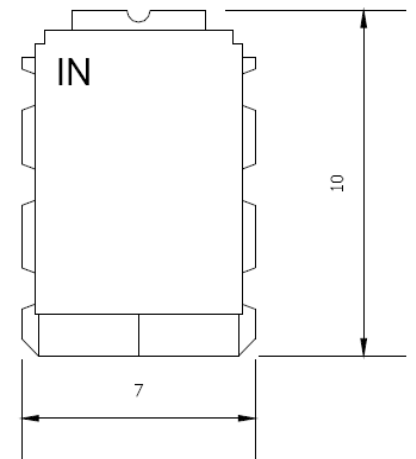
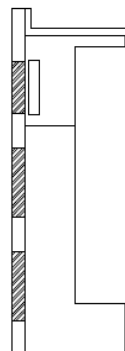
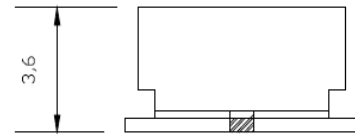
Operating Temperature: -30 C to +85 C
Storage Temperature: -50 C to +90 C

This product is RoHs compliant.

Outline Drawing:



GROUND
 I.O PORT



TOLERANCES : +/- 0.3
UNIT : mm



1230 MHz Ceramic Bandpass Filter

Part Number: AM1230B1203

ANATECH ELECTRONICS INC
RF & Microwave Filters & Products



Response Plot:

