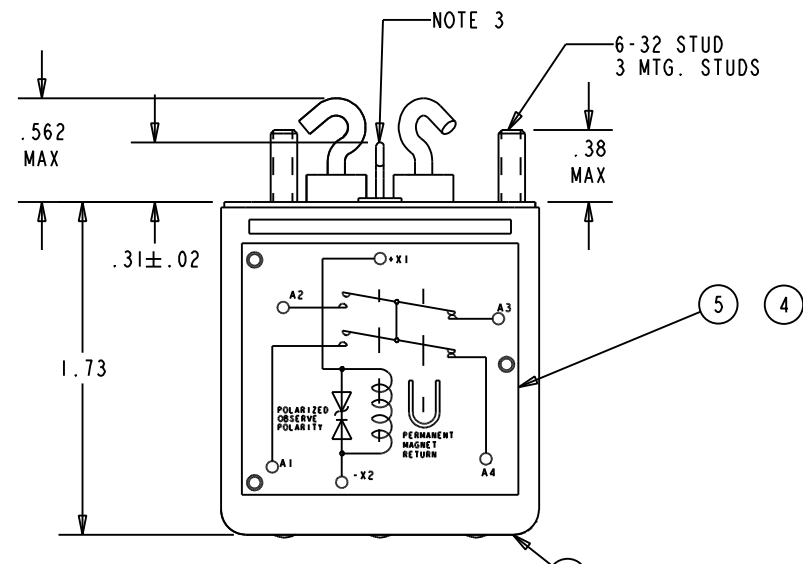
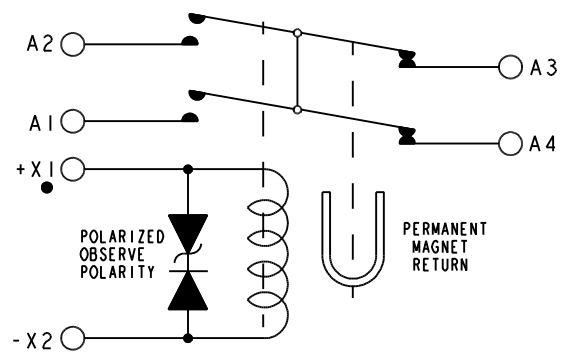
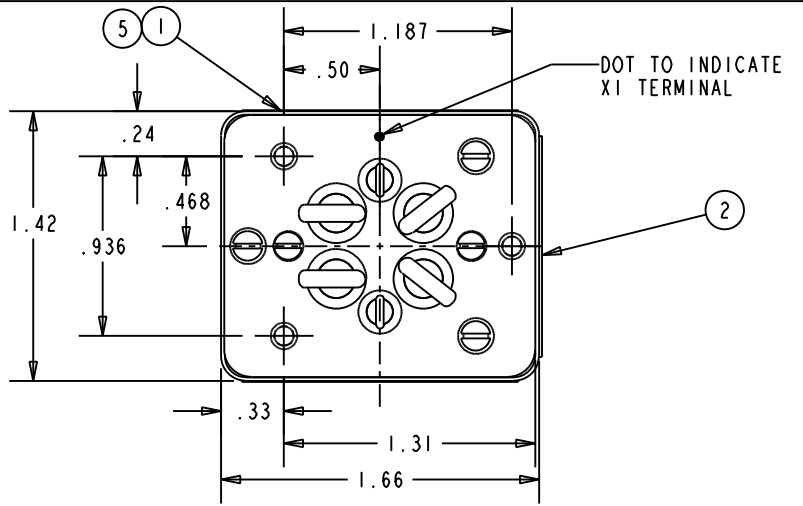


THIS ENTIRE DRAWING IS SUBJECT TO THE FOLLOWING LEGEND:

HARTMAN® PROPRIETARY (DO NOT COPY)

THOSE PORTIONS OF THIS TECHNICAL DATA INDICATED AS LIMITED RIGHTS DATA SHALL NOT, WITHOUT THE WRITTEN PERMISSION OF THE ABOVE CONTRACTOR, BE EITHER (a) USED, RELEASED OR DISCLOSED IN WHOLE OR IN PART OUTSIDE THE GOVERNMENT (b) USED IN WHOLE OR IN PART BY THE GOVERNMENT FOR MANUFACTURE OR, IN THE CASE OF COMPUTER SOFTWARE DOCUMENTATION, FOR PREPARING THE SAME OR SIMILAR COMPUTER SOFTWARE OR (c) USED BY A PARTY OTHER THAN THE GOVERNMENT, EXCEPT FOR (1) EMERGENCY REPAIR OR OVERHAUL WORK ONLY, BY OR FOR THE GOVERNMENT, WHERE THE ITEM OR PROCESS CONCERNED IS NOT OTHERWISE REASONABLY AVAILABLE TO ENABLE TIMELY PERFORMANCE OF THE WORK, PROVIDED THAT THE RELEASE OR DISCLOSURE HEREOF OUTSIDE THE GOVERNMENT SHALL BE MADE SUBJECT TO A PROHIBITION AGAINST FURTHER USE, RELEASE OR DISCLOSURE; OR (2) RELEASE TO A FOREIGN GOVERNMENT, AS THE INTEREST OF THE UNITED STATES MAY REQUIRE, ONLY FOR INFORMATION OR EVALUATION WITHIN SUCH GOVERNMENT OR FOR EMERGENCY REPAIR OR OVERHAUL WORK BY OR FOR SUCH GOVERNMENT UNDER THE CONDITIONS OF (1) ABOVE. THIS LEGEND, TOGETHER WITH THE INDICATIONS OF THE PORTIONS OF THIS DATA WHICH ARE SUBJECT TO SUCH LIMITATIONS SHALL BE INCLUDED ON ANY REPRODUCTION HEREOF WHICH INCLUDES ANY PART OF THE PORTIONS SUBJECT TO SUCH LIMITATION.

REVISIONS		RELEASED	
REV.	DESCRIPTION	DATE	APPROVED
F	24801	ADDED ITEM 5	93/06/10 WS
G	32568	FIND NO 5 QTY 2 WAS 3	97/04/07 RS
H	41370	NOTE 3 ADDED	00/01/14 RS
J	0218-04	ADDED LAMP TEST	04/04/01 CB
K	12-020166	ADDED NOTE 4; MAX WT WAS 6-1/4 OZ.	12/11/15 MM



CONSTRUCTION  
 CONTACT CONFIGURATION  
 CONTACT RATING, RES.  
 IND. NO  
 NC  
 MOTOR LAMP

HERMETICALLY SEALED  
 1 NO. 1 NC (SEE NOTE)  
 25A.. 28 VDC  
 25A  
 25A  
 15A  
 16A

COIL VOLTAGE  
 PICKUP  
 DROPOUT  
 ALTITUDE  
 VIBRATION  
 SHOCK  
 TEMPERATURE  
 RATED DUTY  
 LIFE: ELECTRICAL  
 MECHANICAL  
 DESIGN OBJECTIVE: AMEND. 2 OF MIL-R-6106E, TYPE 1, CLASS A  
 MAX. WEIGHT

30 VDC MAX  
 18 VDC MAX 71°C  
 7 V TO 1 VDC  
 80,000 FT  
 MIL-E-5272. PROC. 1  
 15 G  
 -55° TO +71°C  
 CONTINUOUS  
 50,000 CYCLES  
 100,000 CYCLES  
 6.5 OZ

- NOTES:
- CONTACT RATING MUST BE DERATED IF CONTACTS ARE USED AS S.P.D.T.
  - COIL TRANSIENT VOLTAGE LIMITED TO ±42 VOLTS REFERENCED TO ZERO VOLTS.
  - DIRECTION OF OPEN END OF HOOK IS OPTIONAL.
  - ILLUSTRATIONS FOR REF. ONLY. PRODUCT MEETS FUNCTIONAL AND DIMENSIONAL REQUIREMENTS.

FIND NO	QTY RECD	PART OR IDENTIFYING NO	NOMENCLATURE OR DESCRIPTION	DRAWING OR SPECIFICATION	FSC NO	TE PART NO	MATERIAL OR NOTE
5	2	39529-017	OVERLAY				-
4	1	32389-001	WIRING DIAGRAM				-
3	1	19336-070	RELAY ASS'Y PRIMARY			1616184-6	
2	1	17959-001	PLATE WARNING			1-1616178-1	
1	1	16225-003	PLATE-NAME				

UNLESS OTHERWISE SPECIFIED DIMENSIONS ARE IN INCHES TOLERANCES ON		
2 PL DEC.	3 PL DEC.	ANGLES
±.060	±.010	± 1°
DASH NO.	NEXT ASSY	USED ON
APPLICATION		

**STE**  
 Hartman Division 175 N. DIAMOND STREET MANSFIELD, OHIO 44902

RELAY-25A, 28 VDC, SPDT, N.O.  
 IN.C. DOUBLE BREAK

SIZE A CODE IDENT 74063 DWG NO. DH-14AT

SCALE 1:1 SHEET SHEET REF TE PN 1616089-3