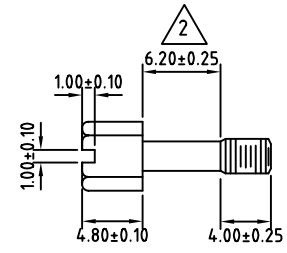


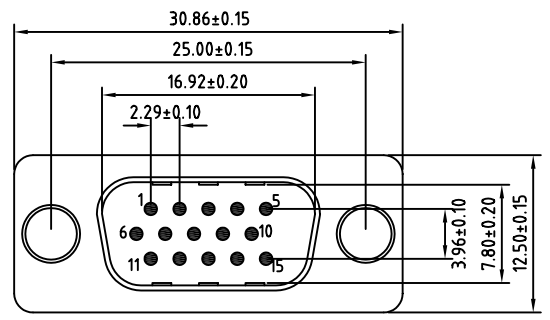
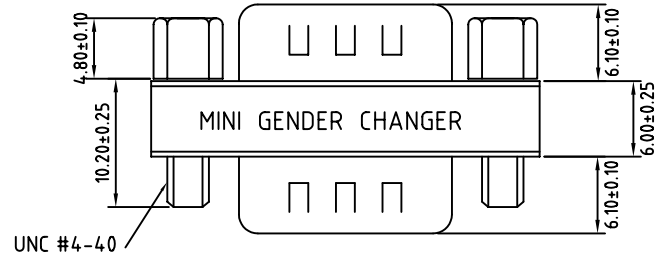
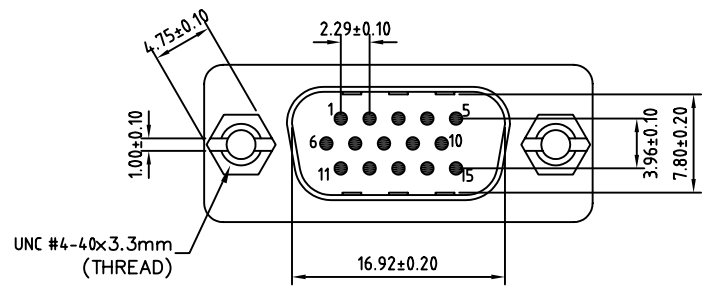
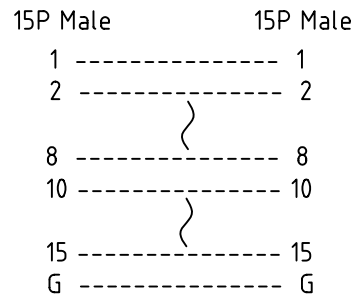
8 7 6 5 4 3 2 1

used for:

UNC #4-40 HEX Screw



HD 15 M/M GENDER CHANGER PIN OUT



SPECIFICATIONS:

Material and Finish:

- Insulator: PBT, UL94 V-0 Rated
- Contacts: Brass, Gold over Nickel Plated
- Shell: Steel, Tin Plated
- UNC #4-40 HEX Screw: Brass, Nickel Plated

Electrical:

- Current Rating: 3 A Max.
- Insulation Resistance: 1000 Mohms Min. @ 500 VDC
- Dielectric Withstanding Voltage: 1000 VAC / 1 Minute
- Operating Temperature: -55°C To +105°C

THIS DRAWING MAY NOT BE COPIED OR REPRODUCED IN ANY WAY, AND MAY NOT BE PASSED ON TO A THIRD PARTY WITHOUT WRITTEN PERMISSION. OWNERSHIP AND COPYRIGHT OF CONEC CORPORATION DO NOT ALTER CAD DRAWING BY HAND

tolerance		finish		scale:	
unless otherwise specified tolerance shall be as follow					
Decimal:	.x ±0.20 .xx ±0.15	Angles:		Dim. in mm	
2007	date	name			
draw.	June 28	Vincent Ke			
appd.	June 28	J. Chaudry			
norm					
d-old					
a	origin				
rev.	description	date	name		

--	--

material: SPECIFICATIONS	
title: HD 15p Male/Male Gender Changer	
RoHS Compliant	
drawing no.:	AutoCAD 2005
16K1A1656	
part no.:	DAH1PPAAR04A

DIN A3 sheet 1/1

8 7 6 5 4 3 2 1