



Electrical specifications

Center Frequency: 1542 MHz

Bandwidth: 34 MHz

VSWR: 1.7 : 1

Insertion Loss (1525~1559MHz) PB1: 1.3 dB max

Insertion Loss (1559~1577MHz) PB2: 2.0 dB max

Input / Output Impedance: 50 Ohms

Rejection: 22 dB min. @ 1460 MHz

Rejection 2: 8 dB min. @ 1590 MHz

Rejection 3: 25 dB min. @ 1625 MHz

Rejection 4: 40.0 dB min. @ 1710 MHz

Power Handling: 1 watt max

Mechanical

Mounting Method: SMT

Dimensions: 33.6 x 7.85 x 6.68 mm

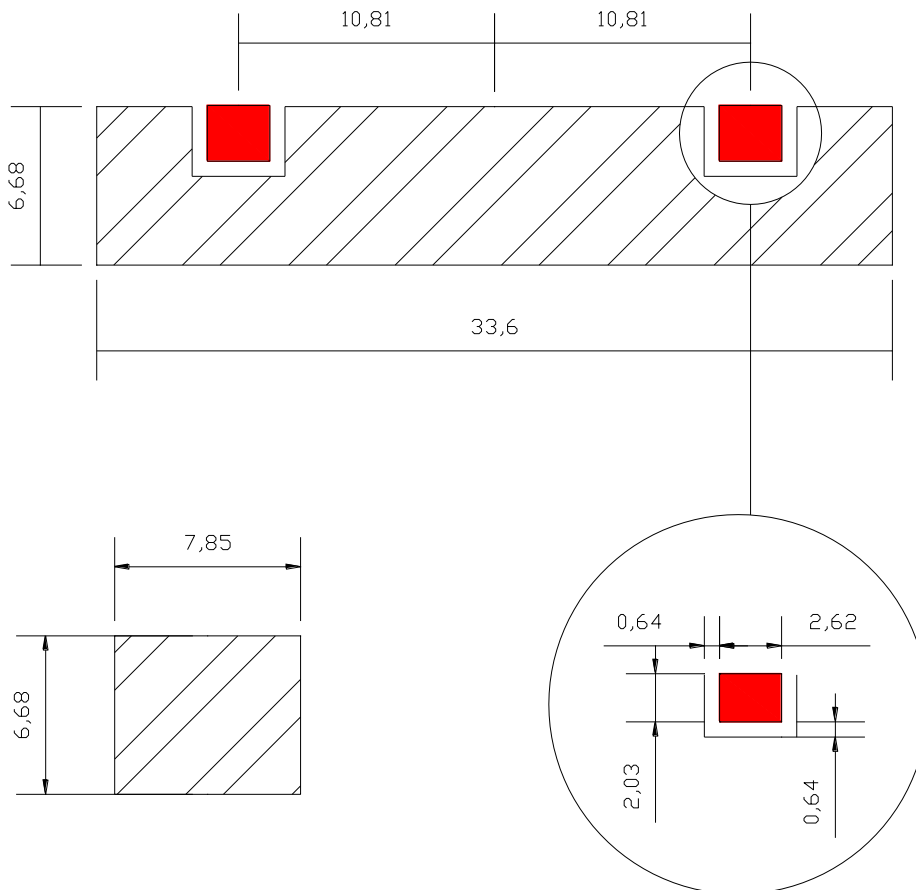
Environmental

Operating Temperature: -40 C to 70 C

Storage Temperature: -55 C to +85 C

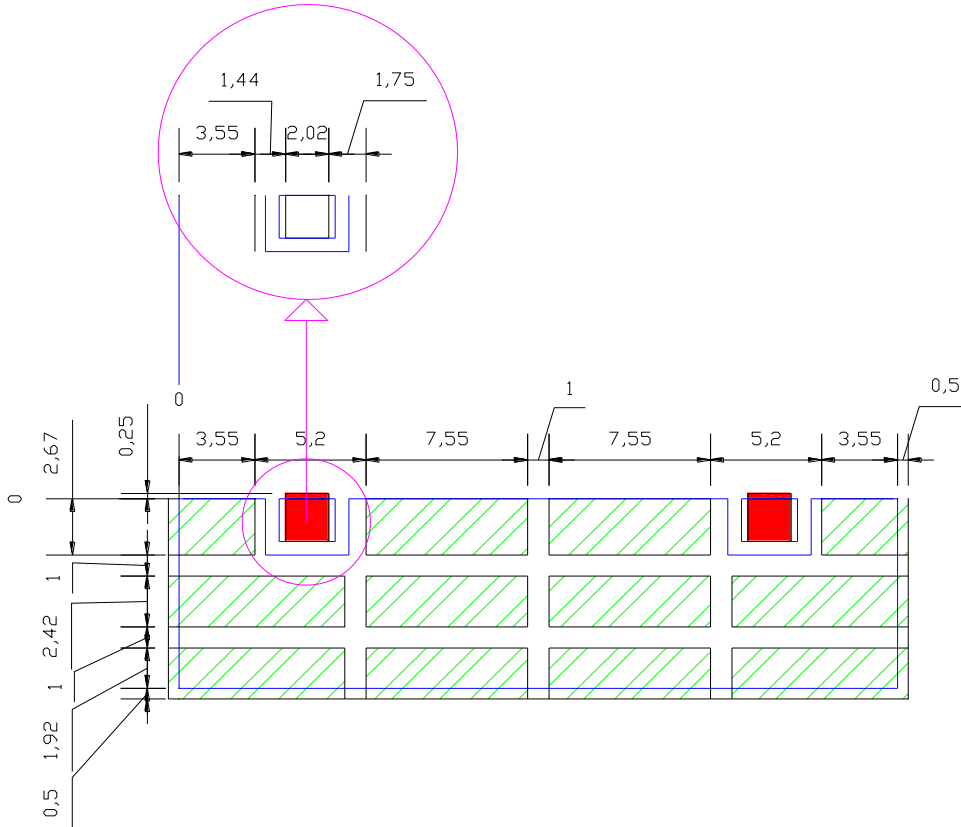
This product is RoHs compliant.

Outline Drawing:





PCB Layout:



-   : Exposed Conductor
-  : Non Solder Metal



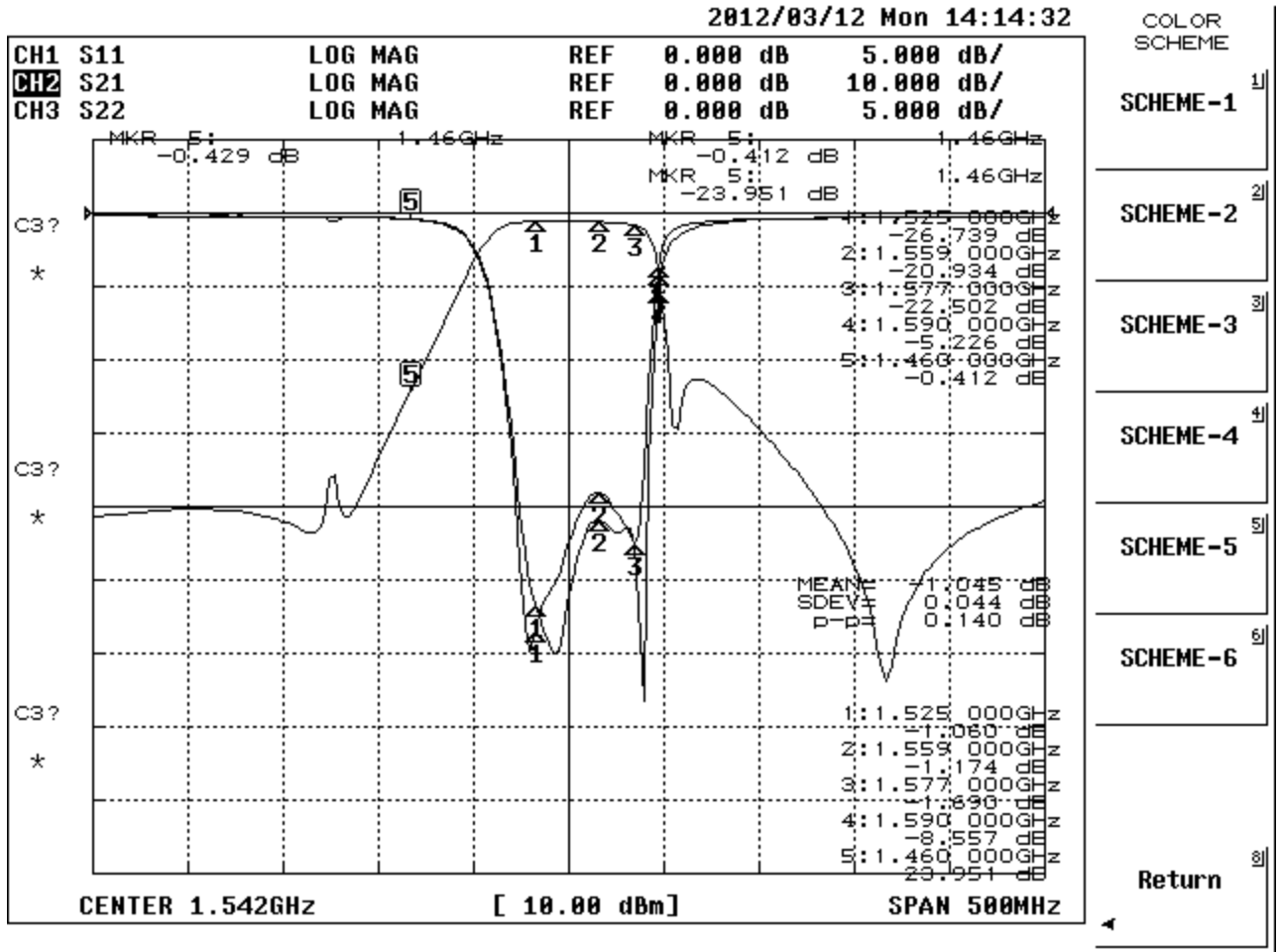
1542 MHz Ceramic Bandpass Filter

Part Number: AM1542B1548



ANATECH ELECTRONICS INC
RF & Microwave Filters & Products

Response Plots:





1542 MHz Ceramic Bandpass Filter

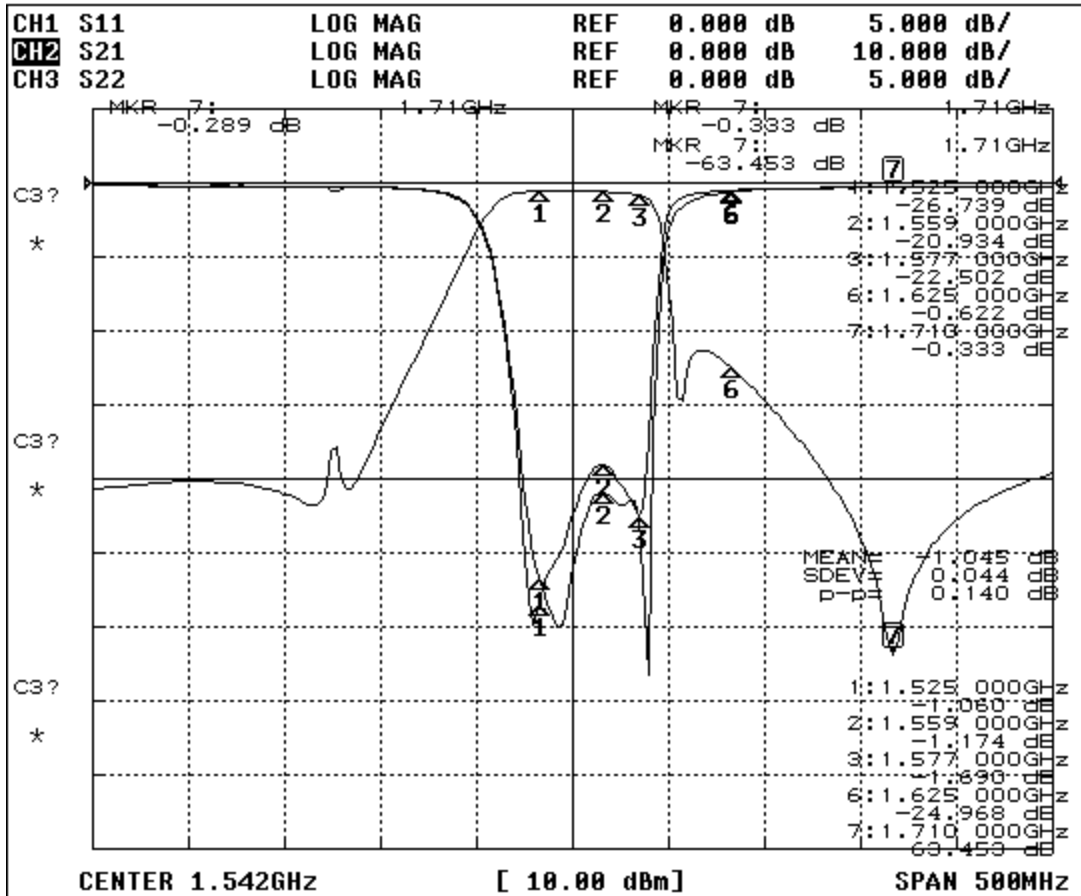
Part Number: AM1542B1548



ANATECH ELECTRONICS INC
RF & Microwave Filters & Products

Response Plots:

2012/03/12 Mon 14:14:52



DISPLAY

DUAL CH ON OFF

SPLIT CH ON OFF

DISPLAY

DEFINE TRACE

DATA MEMORY

CONVERSION

More 1/2