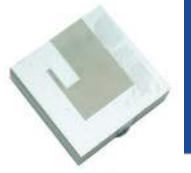


5GHz WiFi Ceramic Patch Antenna



APAKN1304-S5517-T

13.0 x 13.0 x 4.0mm
RoHS/RoHS II Compliant
MSL =1

FEATURES

- High gain of 6 dBi
- 5.15 - 5.85 GHz band operation
- Small form factor of 13.0 x 13.0 x 4.0 mm

APPLICATIONS

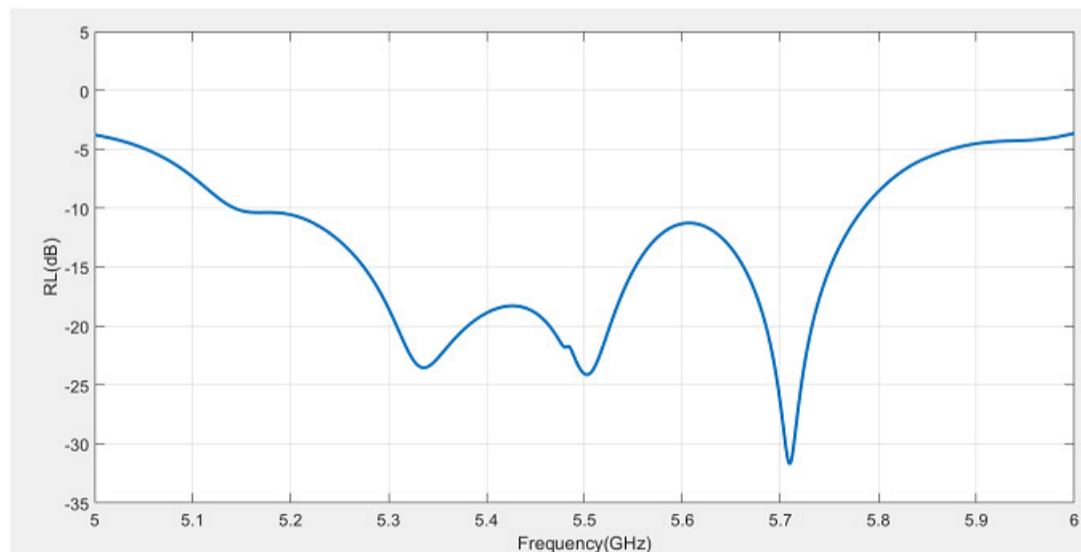
- WiFi
- ISM applications

ELECTRICAL SPECIFICATIONS

Parameters	min	Typ.	Max.	Units	Note
Receiving Frequency Range	5150		5885	MHz	(On a 70*70mm Ground Plane)
Bandwidth	500			MHz	(Return loss \leq -10dB)
Return Loss			-10	dB	(at CF)
Gain		6.0		dBi	(Peak gain)
Polarization Model	Linear				
Impedance	50			Ω	
Frequency Temperature Coefficient			20	ppm/ $^{\circ}$ C	

(*) Application environment, including size of the ground plane, proximity to adjacent components, etc., will affect stated performance. Fine tuning might be required when installed on end-customer's PCB. Abracon offers Antenna Optimization Service, please contact Abracon.

RETURN LOSS CHARACTERISTIC



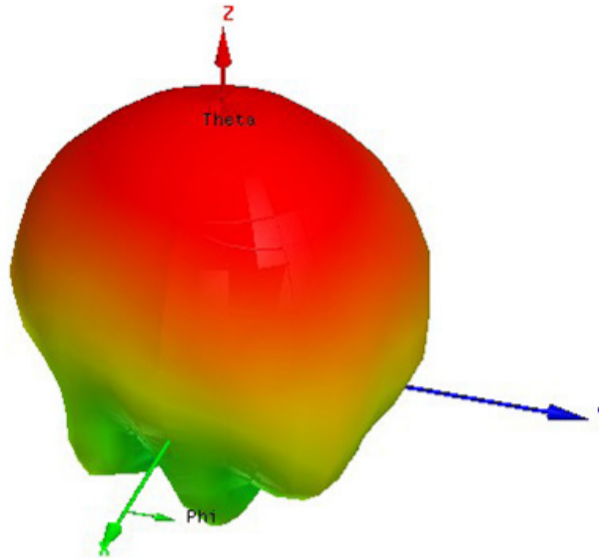
5GHz WiFi Ceramic Patch Antenna



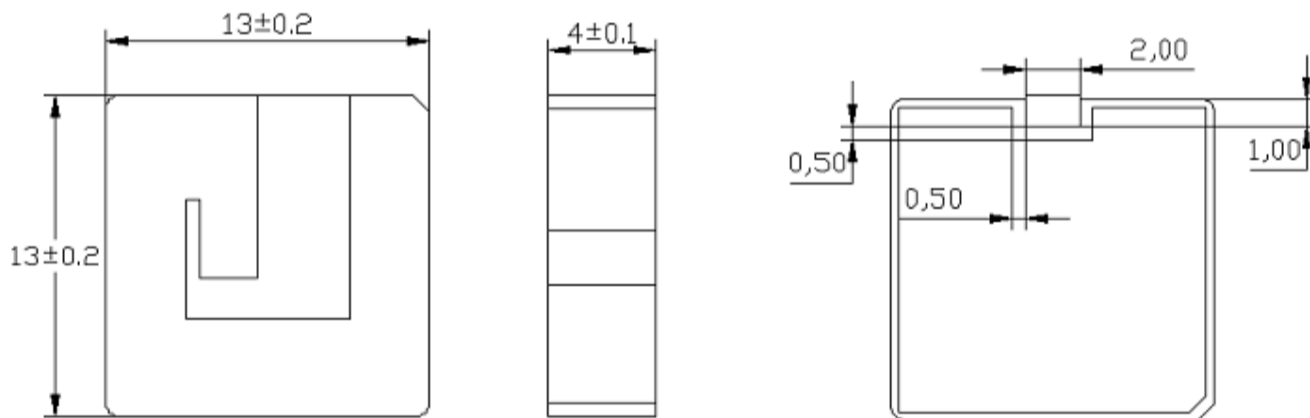
APAKN1304-S5517-T

13.0 x 13.0 x 4.0mm
RoHS/RoHS II Compliant
MSL =1

RADIATIONPATTERN(3D)



OUTLINEDIMENSIONS

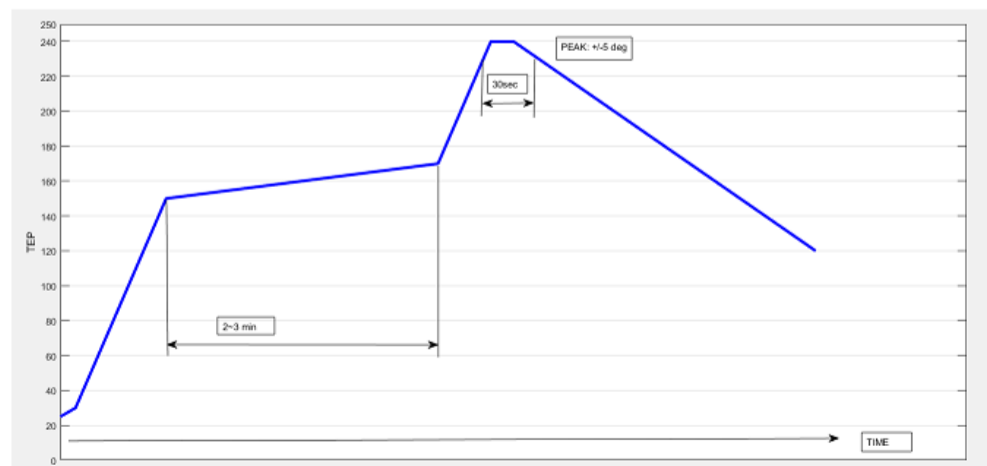


Unit: mm

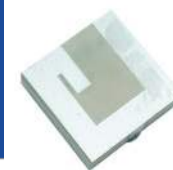
General Tolerance: ±0.3mm

RECOMMENDEDREFLOWSOLDERINGPROFILE

Solder Paste: Sn/Ag/Cu: 96.5/3.0/0.5
Recommended reflow condition:



5GHz WiFi Ceramic Patch Antenna



APAKN1304-S5517-T

13.0 x 13. x 4.0mm
RoHS/RoHS II Compliant
MSL =1

PACKAGING

Package is made of corrugated paper with thickness of 0.8cm. Carton has 8 inner boxes; each inner box has 1 vacuum bag.

Quantity:

Per package base	: 50 elements
Per vacuum bag	: 5 package bases
Per inner box	: 1 vacuum bag
Per package	: 8 inner boxes
Total No of pieces/package	: 2000
Gross Weight	: 9Kg
Carton dimensions	: 52x29x16cm