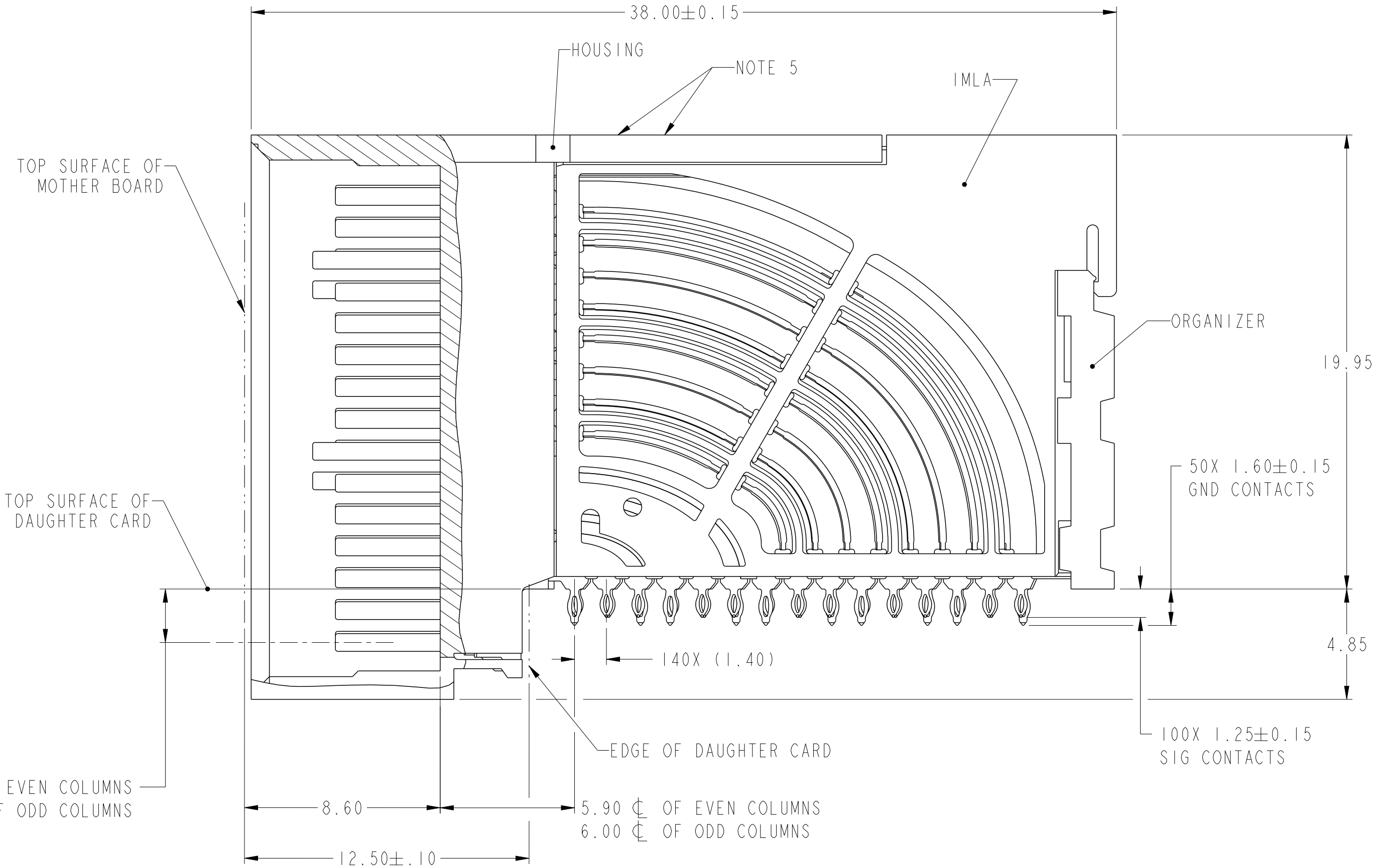
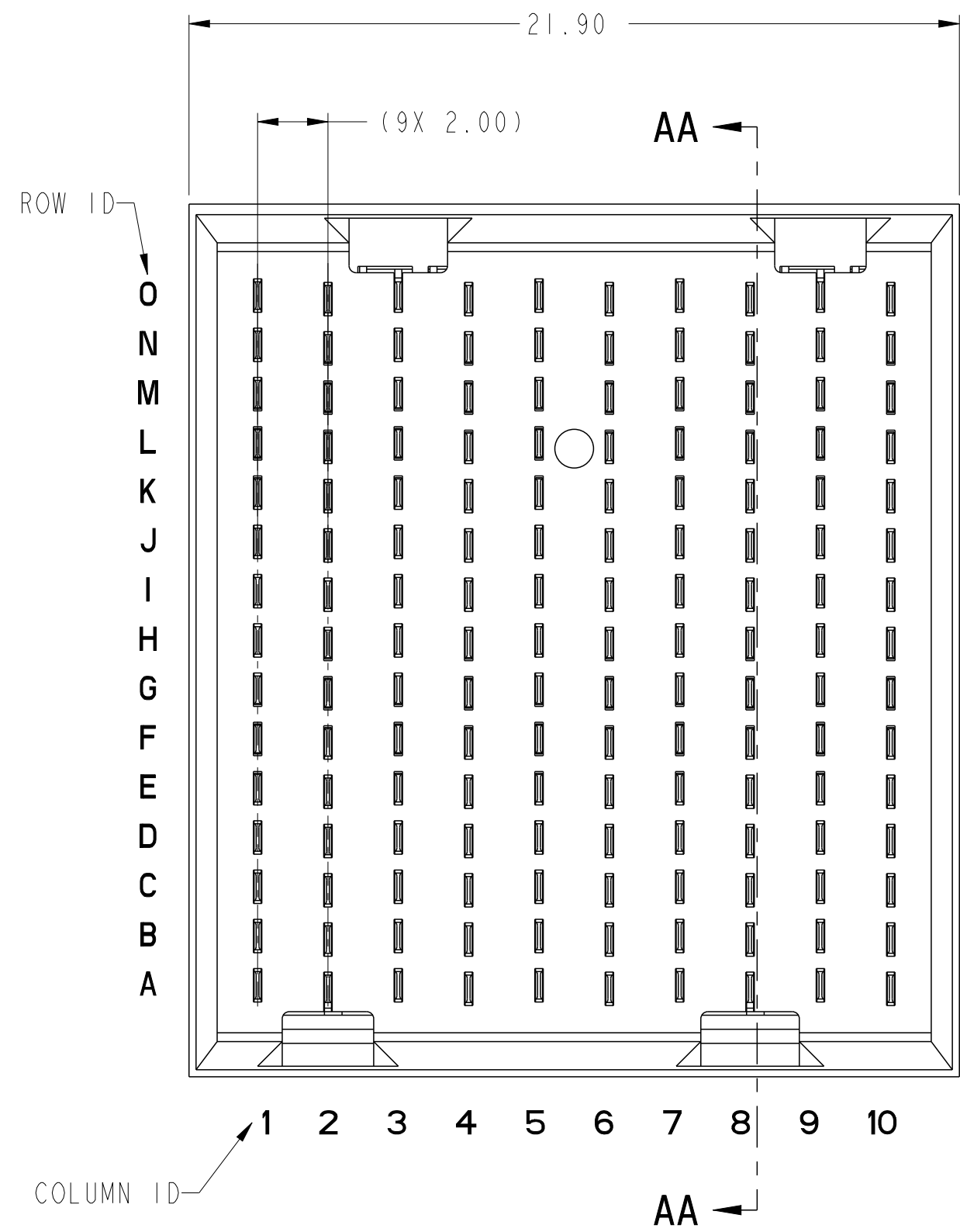


PRODUCT NUMBER  
SEE SHEET 3

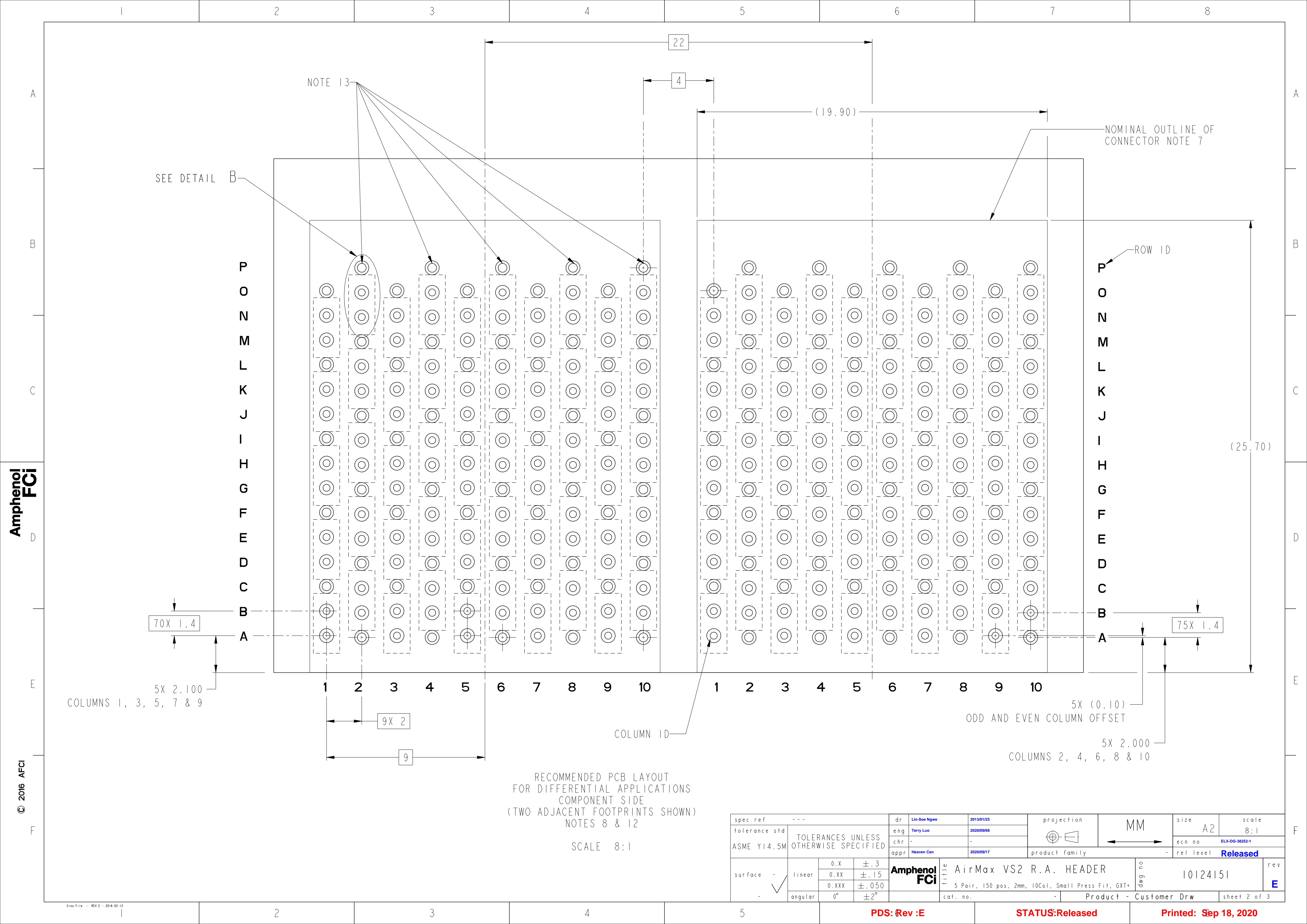


SECTION AA-AA

Amphenol  
FCi

© 2016 APCI

spec ref	---	dr	Lin-Soe Ngwe	2013/01/25	projection	MM	size	A2	scale	10:1
tolerance std	ASME Y14.5M	eng	Terry Luo	2020/09/08			ecn no	ELX-DG-38252-1		
TOLERANCES UNLESS OTHERWISE SPECIFIED		chr	-				rel level	Released		
		appr	Heaven Cen				product family	-		
surface	linear	0.X	±.3		title		AirMax VS2 R.A. HEADER		dwg no 10124151	rev E
		0.XX	±.15		5 Pair, 150 pos, 2mm, 10Col, Small Press Fit, GXT+		Product - Customer Drw			
		0.XXX	±.050		cat. no.		-			
	angular	0°	±2°	PDS: Rev :E		STATUS:Released		Printed: Sep 18, 2020		



Amphenol  
FCi

© 2016 AFci

RECOMMENDED PCB LAYOUT  
FOR DIFFERENTIAL APPLICATIONS  
COMPONENT SIDE  
(TWO ADJACENT FOOTPRINTS SHOWN)  
NOTES 8 & 12  
SCALE 8:1

spec ref	---	dr	Lin-Soe Ngwe	2013/01/25	projection	MM	size	A2	scale	8:1
tolerance std	ASME Y14.5M	eng	Terry Luo	2020/09/08			ecn no	ELX-DG-38252-1		
TOLERANCES UNLESS OTHERWISE SPECIFIED		chr	-				rel level	Released		
surface	-	appr	Heaven Cen				product family	-		
linear	0.X ±.3 0.XX ±.15 0.XXX ±.050	Amphenol FCi		title		AirMax VS2 R.A. HEADER		cat. no.	-	
angular	0° ±2°	5 Pair, 150 pos, 2mm, 10Col, Small Press Fit, GXT+		part no		10124151		sheet	2 of 3	

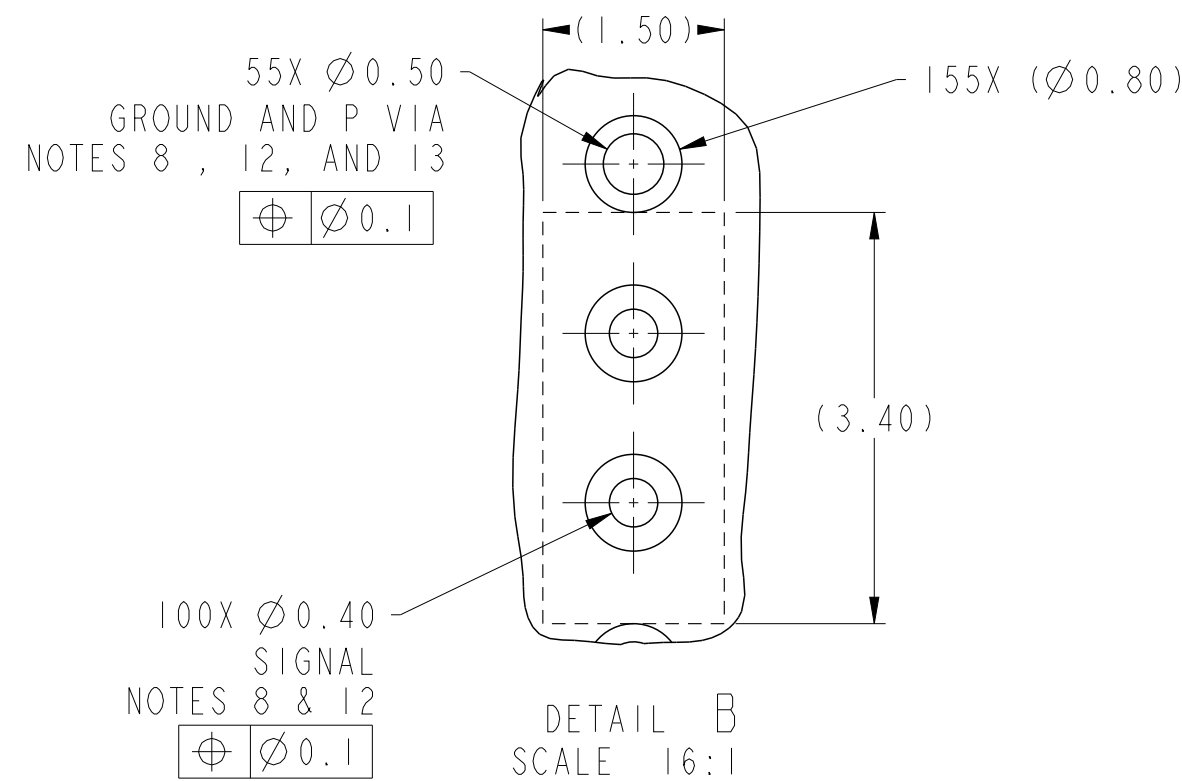
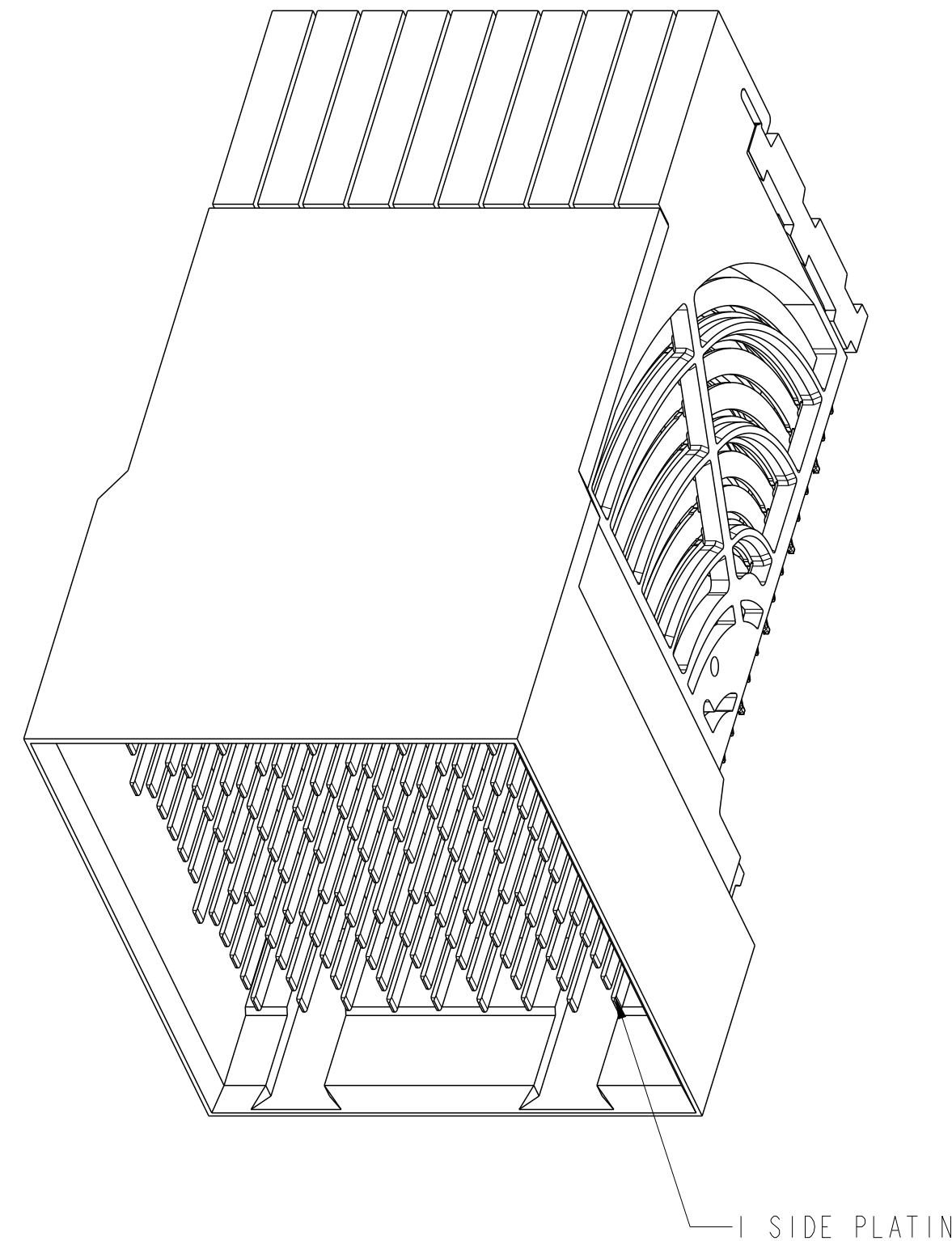
PDS: Rev :E

STATUS:Released

Printed: Sep 18, 2020

PRODUCT NUMBER	PRESS-FIT TAIL PLATING TYPE	PLATING SIDE TYPE
10124151-101	TIN/LEAD ALLOY OVER NICKEL	1 SIDE PLATING (CUSTOMER SPECIAL)
10124151-101LF	TIN OVER NICKEL (LEAD FREE)	
10124151-102	TIN/LEAD ALLOY OVER NICKEL	2 SIDE PLATING
10124151-102LF	TIN OVER NICKEL (LEAD FREE)	

- 1 - CONNECTOR MATERIALS:  
HOUSING: HIGH TEMP THERMOPLASTIC, NATURAL, UL94-V0  
IMLA PLASTIC: HIGH TEMP THERMOPLASTIC, BLACK, UL94-V0  
CONTACT: COPPER ALLOY  
ORGANIZER: HIGH TEMP THERMOPLASTIC, NATURAL, UL94-V0
- 2 - CONTACT PLATING:  
SEPARABLE INTERFACE:  
PERFORMANCE-BASED PLATING, QUALIFIED TO MEET THE REQUIREMENTS OF FCI PRODUCT SPECIFICATION GS-12-0956 INCLUDING TELCORDIA GR-1217-CORE (NOVEMBER 1995) CENTRAL OFFICE TEST SEQUENCE  
  
PRESS-FIT TAILS: SEE TABLE
- 3 - PRODUCT SPECIFICATION: GS-12-0956
- 4 - APPLICATION SPECIFICATION: GS-20-0305
- 5 - PRODUCT MARKING, (PROTOTYPE, PART NUMBER & LOT CODE), ON THIS SURFACE.
- 6 - POSITIONS "F" AND "L" OF ODD NUMBERED COLUMNS AND POSITIONS "G" AND "M" OF EVEN NUMBERED COLUMNS CORRESPOND TO EARLY MATE HEADER PINS.
- 7 - CONNECTOR OUTLINE MAY BE SCREEN PRINTED ONTO CUSTOMER PCB TO BE USED AS A GUIDE FOR CONNECTOR PLACEMENT.
- 8 - REFER TO CUSTOMER DRAWING 10104444 FOR INFORMATION ON PCB HOLE DIAMETERS AND PLATING OPTIONS
- 9 - LEAD FREE PRODUCT MEETS THE EUROPEAN UNION DIRECTIVES & OTHER COUNTRY REGULATIONS AS DESCRIBED IN GS-22-008
- 10 - A  $\triangle$  SYMBOL WILL BE NEXT TO ANY DIMENSION, VIEW, OR NOTE, WHICH HAS BEEN MODIFIED WITH THE CURRENT DRAWING REVISION.
- 11 - PACKAGING MEETS GS-14-920 LEAD FREE LABELING SPECIFICATION.
- 12 - GROUND CONTACTS (C, F, I, L, & O IN ODD COLUMNS AND A, D, G, J, & M IN EVEN COLUMNS) REQUIRE ( $\phi 0.50$ ) FINISHED HOLES. SIGNAL LOCATIONS REQUIRE ( $\phi 0.40$ ) FINISHED HOLES
- 13 - THESE OUTER VIAS (P) ARE OPTIONAL. WHILE NO CONNECTOR PINS ARE PRESSED INTO THESE HOLES WE RECOMMEND ( $\phi 0.500$ ) FINISHED HOLES AT THESE LOCATIONS TO PROVIDE GROUND SYMMETRY THROUGH THE PCB.



10124151-101 OR -101LF  
10124151-102 OR -102LF

SCALE 4:1

spec ref	---	dr	Lin-Soe Ngwe	2013/01/25	projection	MM	size	A2	scale	10:1
tolerance std	ASME Y14.5M	eng	Terry Luo	2020/09/08	chr	-	ecn no	ELX-DG-38252-1	rel level	Released
TOLERANCES UNLESS OTHERWISE SPECIFIED		appr	Heaven Cen	2020/09/17	product family	-	cat. no.	-	Product - Customer Drw	sheet 3 of 3
surface	-	linear	0.X	$\pm .3$	Amphenol FCi	title	AirMax VS2 R.A. HEADER	5 Pair, 150 pos, 2mm, 10Col, Small Press Fit, GXT+	cat. no.	Product - Customer Drw
		0.XX	$\pm .15$							
		0.XXX	$\pm .050$							
		angular	0°	$\pm 2^\circ$	title	10124151	rev	E		

PDS: Rev :E

STATUS:Released

Printed: Sep 18, 2020