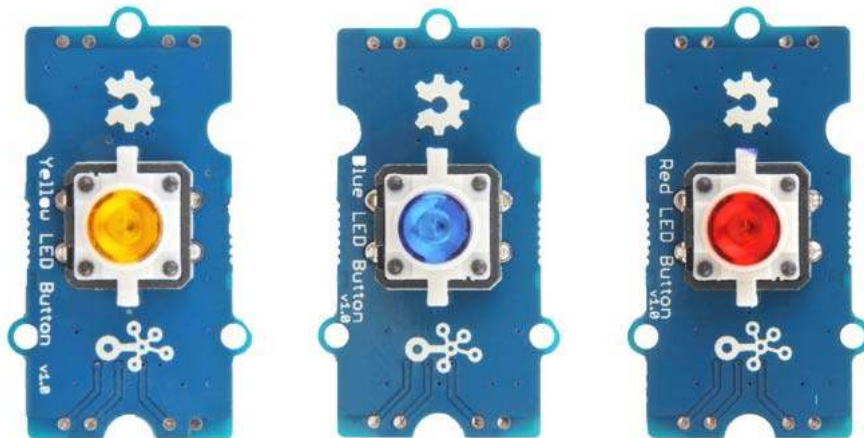




Grove - Yellow LED Button SKU 111020045

Description



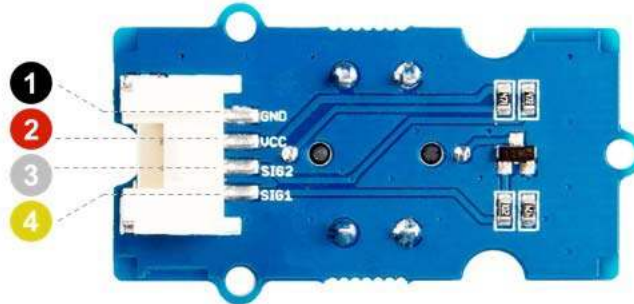
The Grove - LED Button is composed of Grove - Yellow Button, Grove - Blue LED Button and Grove - Red LED Button.

The Grove - Yellow LED Button is stable and reliable with 100 000 times long life. With the build-in LED, you can apply it to many interesting projects, it is really useful to use the LED to show the status of the button. We use a high-quality N-Channel MOSFET to control the LED to ensure the high switching speed and a low consumption. All in all, you want some really awesome shining button? Here you go ..

Features

- Long operating life
- Easy to use
- Grove Digital interface

Pin Map



- ❶ GND: connect this module to the system GND
- ❷ VCC: you can use 5V or 3.3V for this module
- ❸ SIG2: output the button status, default high
- ❹ SIG1: input the LED control signal, default low

Show demo

Technical Details

Dimensions	40mm x 20mm x 16mm
Weight	G.W 10.30g
Battery	Exclude
Operating voltage	3.3V/5V
Press Resistance	<100mΩ
Release Resistance	>100MΩ

Part List

Grove - Yellow LED Button	1
Grove cable	1

ECCN/HTS

ECCN	EAR99
HSCODE	8536500000

