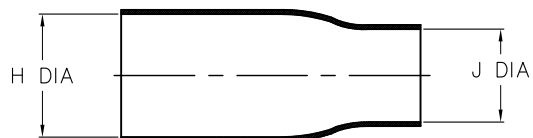
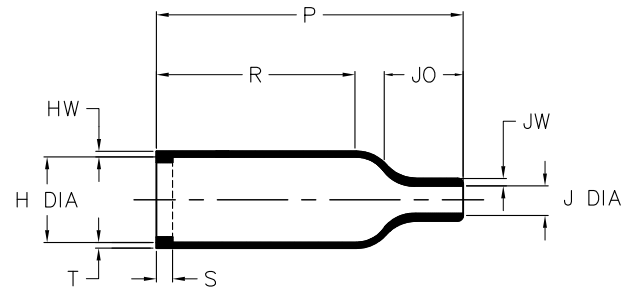


AS SUPPLIED (MATERIAL -3, -4, OR -25)



AS SUPPLIED (MATERIAL -12)

REVISIONS		
LTR	DESCRIPTION	DATE
B	REVISED PER ECO-10-020693	10/12/2010



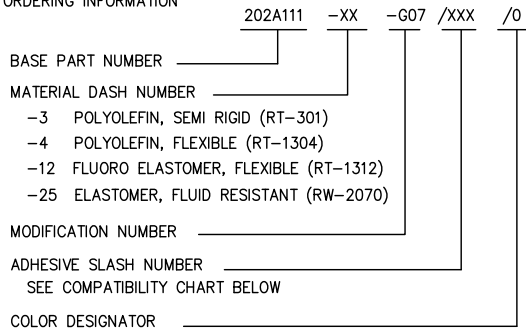
AFTER UNRESTRICTED RECOVERY

**NOTES**

1. ALL DIMENSIONS ARE IN  $\frac{\text{INCHES}}{[\text{MILLIMETERS}]}$
2. DIMENSIONS APPEARING IN TABLE ARE AS FOLLOWS:  
 a - AS SUPPLIED  
 b - AFTER UNRESTRICTED RECOVERY

**3** COATING (ADHESIVE): IS OPTIONAL AS SUPPLIED DIMENSIONS APPEARING IN TABLE ARE FOR UNCOATED PARTS. WHEN COATING IS ADDED, ENTRY DIAMETER WILL BE REDUCED BY .06 [1.5] MAX.

**4. ORDERING INFORMATION**



**TABLE OF DIMENSIONS**

PART DESCRIPTION	H		J		P ±10%	R ±10%	S ±10%	T ±10%	JO ±10%	JW ±20%	HW ±20%
	MIN	MAX	MIN	MAX							
	a	b	a	b							
202A111-X-G07 (X: -3, -4 OR -25)	.67 [17]	.31 [7.9]	.67 [17]	.09 [2,2]	.98 [25]	.55 [14]	.12 [3,0]	.04 [1,0]	.24 [6,0]	.07 [1,7]	.05 [1,3]
202A111-12-G07	.63 [16]	.31 [8]	.43 [11]	.09 [2,2]	.98 [25]	.55 [14]	.12 [3,0]	.04 [1,0]	.24 [6,0]	.07 [1,7]	.05 [1,3]

If this document is printed it becomes uncontrolled. Check for the latest revision

**CUSTOMER DRAWING**

**COMPATIBILITY CHART**

MATERIAL DASH NO.	ADHESIVE (COATING) SLASH NUMBER	ADHESIVE (COATING) S NUMBER
-3	/42; /86; /180	S-1017; S-1048; S1030
-4	/42; /86; /180	S-1017; S-1048; S1030
-12	N/A	N/A
-25	/42; /86; /225	S-1017; S-1048; S-1206

UNLESS OTHERWISE SPECIFIED DIMENSIONS ARE INCHES. METRIC DIMENSIONS ARE IN BRACKETS.  
 DECIMAL TOLERANCES  
 .XXX ± 0.005 [0.13 mm]  
 .XX ± 0.01 [0.25 mm]  
 .X ± 0.1 [0.50 mm]  
 ANGLE TOLERANCE  
 .X ± 1 DEG.

REVISED  
 UNGUYEN  
 APPROVED  
 DHURRELL

**Tyco Electronics** Raychem Molded Parts  
 305 Constitution Dr  
 Menlo Park, CA 94025

TITLE  
**BOOT, STRAIGHT**  
 SIZE B CODE IDENT. NO. 06090 DWG. NO. 202A111-X-G07

THIRD ANGLE PROJECTION  
 © 1997-2010 Tyco Electronics Corporation. All rights reserved. DO NOT SCALE THIS DRAWING SHEET 1 OF 1