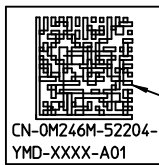
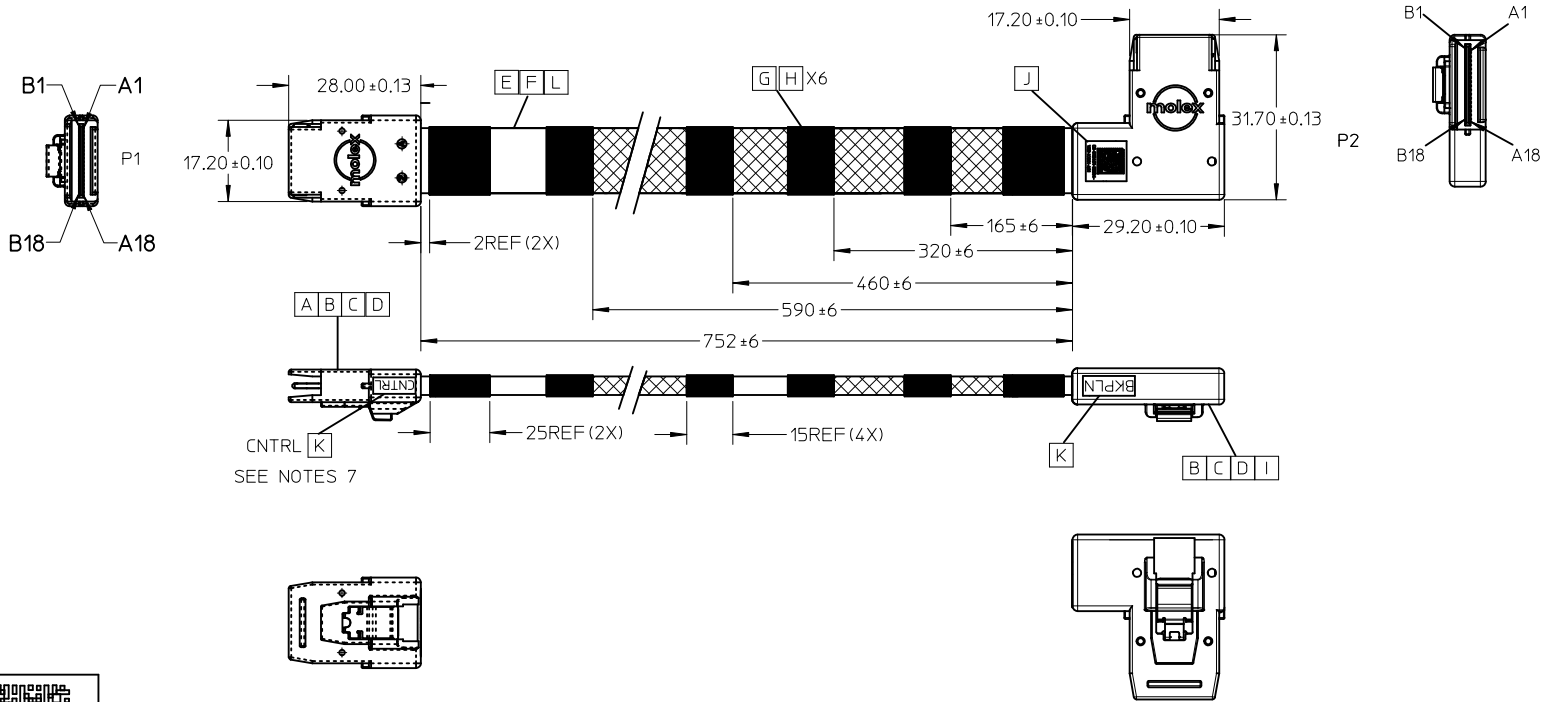


REVISIONS				
EC NO	DATE	REV	DESCRIPTION	CHANGER
NA	2010/06/10	A	INITIAL RELEASE	LUCKY
CY11-5360	2010/08/27	B	CHANGE CUSTOMER VERSION FROM 'A00' TO 'A01'(LABEL)	LUCKY



LABEL FORMART DETAIL

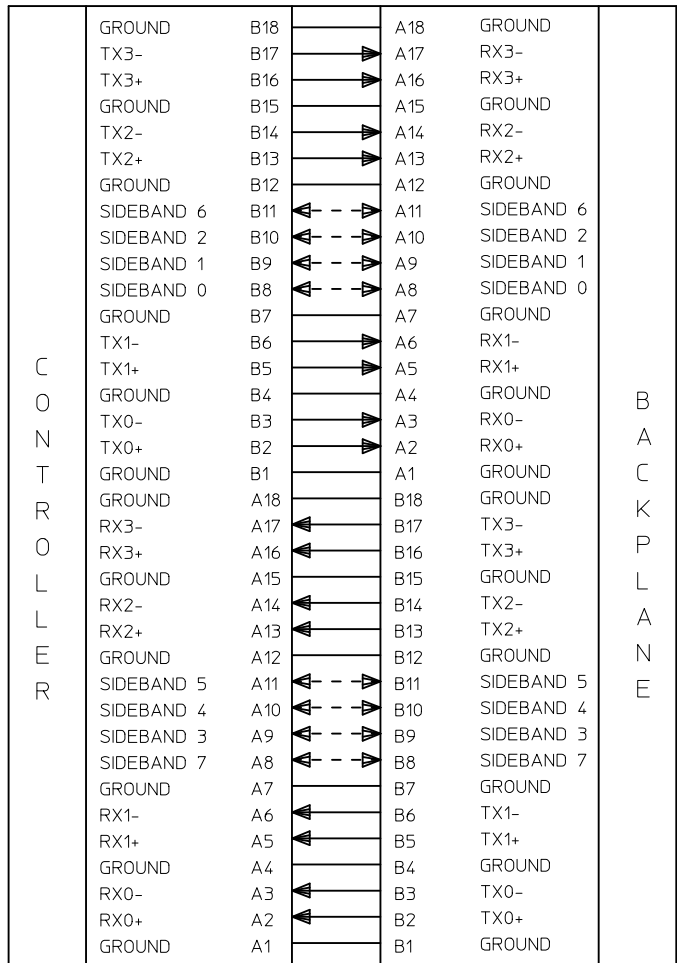
READING AS: CN0M246M52204YMDXXXXA01

IPASS™ IS A TRADEMARK OF MOLEX

ENTER DESCRIPTION EC NO: USY2011-0241 DRWN: ZYU CHKD: W. LUCKY APPR: BLAU	QUALITY SYMBOLS 	GENERAL TOLERANCES (UNLESS SPECIFIED)		DIMENSION STYLE MM ONLY	SCALE ---	DESIGN UNITS METRIC	THIRD ANGLE PROJECTION
		4 PLACES ± --- ± --- 3 PLACES ± --- ± --- 2 PLACES ± --- ± --- 1 PLACE ± --- ± ---	mm INCH DRAWN BY: ZYU CHECKED BY: W. LUCKY APPROVED BY: BLAU	DATE: 2010/10/07 DATE: 2010/10/07 DATE: 2010/10/11	TITLE: 36CKTIPASS RT ANG RT EXIT - ST .752M		
		ANGULAR ± --- °	MATERIAL NO.: 1110964001	MOLEX INCORPORATED	DOCUMENT NO.: SD-111096-4001		
		DRAFT WHERE APPLICABLE MUST REMAIN WITHIN DIMENSIONS	SIZE: A3	THIS DRAWING CONTAINS INFORMATION THAT IS PROPRIETARY TO MOLEX INCORPORATED AND SHOULD NOT BE USED WITHOUT WRITTEN PERMISSION	SHEET NO.: 1 OF 3		

P1

P2



CONTROLLER

BACKPLANE

NOTE:

1. ALL SIGNAL GROUNDS ARE BUSSED IN PCB.

TM
IPASS IS A TRADEMARK OF MOLEX.

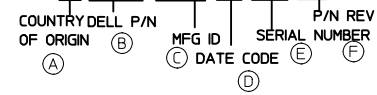
ITEM	DESCRIPTION	L(mm)	QTY.
L	8C*30AWG;TS:GY:P=1.0MM:UL2651		1PCS
K	Blank label 5x10mm Thermal Transfer		2PCS
J	Blank Label 0.375"*0.375" Brady# B-423		1PCS
I	PCBfor Ipass 36CKT R/A Right FR406		1PCS
H	HST F 10MM 125C (UL) BLK	A/R	6PCS
G	KUNJIE ACETATE CLOTH TAPE 12MM BLACK	A/R	6PCS
F	Braid sleeving OD:9.5mm Black HF	752REF	1PCS
E	1P*30AWG;SHLD:FEP:BU:0.90*2.21MM:Twin-ax	780REF	8PCS
D	PE G812 LDPE NATURAL		A/R
C	Ipass Latach(Local vender)		2PCS
B	PBT POLYESTER 30% GF BLACK UL94V-0		A/R
A	Raw PCB 172010286+ HF Solder Wire		2PCS

ENTER DESCRIPTION EC NO: USY2011-0241 DRW:ZYU 2010/10/07 CHKD:W.LUCKY 2010/10/07 APPR:BLAU 2010/10/11	DESCRIPTION REV	QUALITY SYMBOLS	GENERAL TOLERANCES (UNLESS SPECIFIED)	DIMENSION STYLE	SCALE	DESIGN UNITS	THIRD ANGLE PROJECTION	
		▼=0 ▽=0	mm INCH 4 PLACES ±--- ±--- 3 PLACES ±--- ±--- 2 PLACES ±--- ±--- 1 PLACE ±--- ±--- ANGULAR ±---°	MM ONLY	---	METRIC	DRAWN BY DATE ZYU 2010/10/07 CHECKED BY DATE W.LUCKY 2010/10/07 APPROVED BY DATE BLAU 2010/10/11	TITLE 36CKTIPASS RT ANG RT EXIT - ST .752M
		DRAFT WHERE APPLICABLE MUST REMAIN WITHIN DIMENSIONS	MATERIAL NO. 1110964001	DOCUMENT NO. SD-111096-4001	SHEET NO. 2 OF 3			
		THIS DRAWING CONTAINS INFORMATION THAT IS PROPRIETARY TO MOLEX INCORPORATED AND SHOULD NOT BE USED WITHOUT WRITTEN PERMISSION						

NOTES

1. IPASS INNERMOLD WITH PE RESIN;
IPASS OUTERMOLD WITH PBT RESIN.
2. THIS PRODUCT MUST MEET EU CHEMICAL SUBSTANCE SPECIFICATION FOR PRODUCTS(EU 2002/95/EC RoHS).
3. FOR IPASS END ASSEMBLY PLS REFERS TO E-74562-010 FOR DETAIL.
4. THE PRODUCT ELECTRICAL PERFORMANCE AND MECHANICAL PERFORMANCE REFER TO SAS 2.0 INDUSTRIAL STANDARD
5. MECHANICAL PERFORMANCE REFER TO PS-75783-001.
6. RECOMMENDED MINIMUM BEND RADIUS IS 28MM.
7. TEXT NEED USE FONT ARIAL AND THE TEXT SHOULD BE 3MM MIN.
8. LABEL DETAIL
 - 8.1 FOR LABEL DETAIL PLEASE REFER TO DELL SPECIFICATION NUMBER:
13190 REV. A28-00 TYPE W
 - 8.2 LABEL FORMART:
CN-0M246M-52204-YMD-XXXX-A01
 - 8.3.TEXT NEED USE FONT VERDANA AND THE TEXT SHOULD BE 3PT MINIMUM.
9. CABLES-REFERENCE DOCUMENTS
DN362 SPEC,ENG,STD,DFE
6T198 SPEC,DFE, RESTRICTED-MTL
13190 SPEC, SPLR, BRCD, LBL.(USE IF SHIPPED DIRECTLY TO DELL)
ENG0000116 DOC, PROC, CABLE, ENG
ENG0000117 SPEC, PRCS, QUAL, CBL, ELEC
ENG0000121 DOC, PROC, PPAP, CBL, ENG
ASME Y14.5M-1994 DIMENSIONING AND TOLERANCING

PS:
DELL LABEL SPEC(13190 A28-00) EXTRACT
EVERY SECTION SEE DETAIL REMARK:
CN-0M246M-52204-YMD-XXXX-A01



- (A) ORIGINAL COUNTRY
- (B) DELL P/N
- (C) MFG ID
- (D) DATE CODE
 - 1.FIRST CHARACTER IS YEAR CODE: LAST NUMBER OF THE YEAR.
 - 2.SECOND CHARACTER IS MONTH CODE, SEE CHART.

JAN	FEB	MAR	APR	MAY	JUN	JUL	AUG	SEP	OCT	NOV	DEC
1	2	3	4	5	6	7	8	9	A	B	C
- (E) SERIAL NUMBER.
XXXX (DELL SERIAL NUMBER): SUPPLIERS WILL BE ALLOWED THE USE OF CHARACTERS 0-9, A-0IN THE FIRST POSITION OF THE SEQUENCE NUMBER, WITH NO RESTRICTIONS ON THE 2NDTHROUGH 4TH POSITIONS PROVIDED THAT EACH SEQUENCE NUMBER IS INDEED UNIQUE.
- (F) P/N REV

3.3RD CHARACTER IS DAY CODE: 1ST -- 9TH = 1 -- 9 AND 10ST -- 31ST
= A -- V

ENTER DESCRIPTION EC NO: USY2011-0241 DRWN:ZYU 2010/10/07 CHKD:W.LUCKY 2010/10/07 APPR:BLAU 2010/10/11	QUALITY SYMBOLS ▼=0 ▽=0	GENERAL TOLERANCES (UNLESS SPECIFIED)	DIMENSION STYLE MM ONLY	SCALE ---	DESIGN UNITS METRIC	THIRD ANGLE PROJECTION																
			<table border="1" style="width: 100%; text-align: center;"> <tr> <td></td><td>mm</td><td>INCH</td></tr> <tr> <td>4 PLACES</td><td>± ---</td><td>± ---</td></tr> <tr> <td>3 PLACES</td><td>± ---</td><td>± ---</td></tr> <tr> <td>2 PLACES</td><td>± ---</td><td>± ---</td></tr> <tr> <td>1 PLACE</td><td>± ---</td><td>± ---</td></tr> </table>		mm	INCH	4 PLACES	± ---	± ---	3 PLACES	± ---	± ---	2 PLACES	± ---	± ---	1 PLACE	± ---	± ---	DRAWN BY: ZYU DATE: 2010/10/07	TITLE: 36CKTIPASS RT ANG RT EXIT - ST .752M		
		mm	INCH																			
	4 PLACES	± ---	± ---																			
3 PLACES	± ---	± ---																				
2 PLACES	± ---	± ---																				
1 PLACE	± ---	± ---																				
		ANGULAR ±---°	CHECKED BY: W.LUCKY DATE: 2010/10/07	MOLEX MOLEX INCORPORATED																		
		DRAFT WHERE APPLICABLE MUST REMAIN WITHIN DIMENSIONS	APPROVED BY: BLAU DATE: 2010/10/11	MATERIAL NO. 1110964001	DOCUMENT NO. SD-111096-4001	SHEET NO. 3 OF 3																