

Specification Status: Released

Maximum Electrical Rating
Operating Voltage: 16Vdc
Interrupt Current: 60A

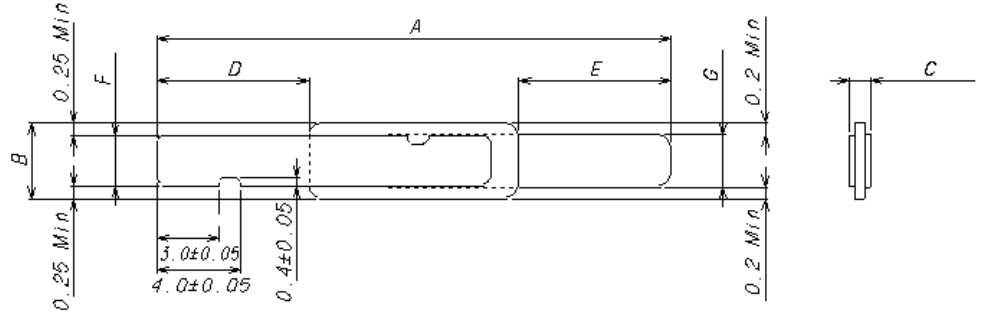
Chip Size: 3.6 X 10 mm

Leads: Nickel 1/4H
0.125mm nominal thickness

Solder: Lead-free

Tape: None

Marking: None



*Dimensions on the drawing are for reference only.

TABLE I. DIMENSIONS:

	A		B		C		D		E		F		G	
	MIN	MAX	MIN	MAX	MIN	MAX	MIN	MAX	MIN	MAX	MIN	MAX	MIN	MAX
mm:	23.6	25.6	3.55	3.65	---	0.7	6.8	7.8	6.8	7.8	2.35	2.45	2.45	2.55
In*:	0.944	1.024	0.142	0.146	---	0.028	0.27	0.31	0.27	0.31	0.094	0.098	0.098	0.102

*Rounded off approximation

TABLE II. PERFORMANCE RATINGS: As measured in Mueller Kelvin Clips model BU-75K.

I HOLD	CURRENT TRIP LIMITS									TIME TO TRIP	REFERENCE RESISTANCE	ONE-HOUR POST-TRIP RESISTANCE	TRIPPED-STATE POWER DISSIPATION				
	AMPS 25°C HOLD			AMPS AT 0°C		AMPS AT 25°C		AMPS AT 60°C						AMPS AT -°C		SECONDS AT 25°C, 11.0A	
	HOLD	TRIP	HOLD	TRIP	HOLD	TRIP	HOLD	TRIP	HOLD	TRIP	MIN	MAX	MIN	MAX	MIN	MAX	
2.2	3.0	7.0	2.2	5.3	1.1	3.1	---	---	---	5.0	0.017	0.029	0.017	0.058			1.8

Recognitions: UL, TUV, CSA
Reference Documents: PS300
Precedence: This specification takes precedence over documents referenced herein.
Effectivity: Reference documents shall be the issue in effect on the date of invitation for bid.
CAUTION: Operation beyond the rated voltage or current may result in rupture, electrical arcing or flame.

Materials Information:
ROHS Compliant

ELV Compliant

Pb-Free

Directive 2000/53/EC
Compliant

Directive 2002/95/EC
Compliant

