

4

3

2

1


THIS DRAWING IS UNPUBLISHED. RELEASED FOR PUBLICATION
© COPYRIGHT ALL RIGHTS RESERVED.

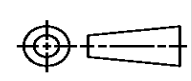
LOC	DIST	REVISIONS			
P	LTR	DESCRIPTION	DATE	DWN	APVD
	B1	ECR-14-003640	12MAR2014	GK	HMR

REPLACED BY OCEAN STYLE APPLICATOR PART NUMBER 2151808-2

FOR REPLACEMENT PARTS FOR APPLICATOR 1528274
REFER TO ADDITIONAL PAGE(S). SPARE PARTS KIT (IF LISTED)
WILL REMAIN AVAILABLE.

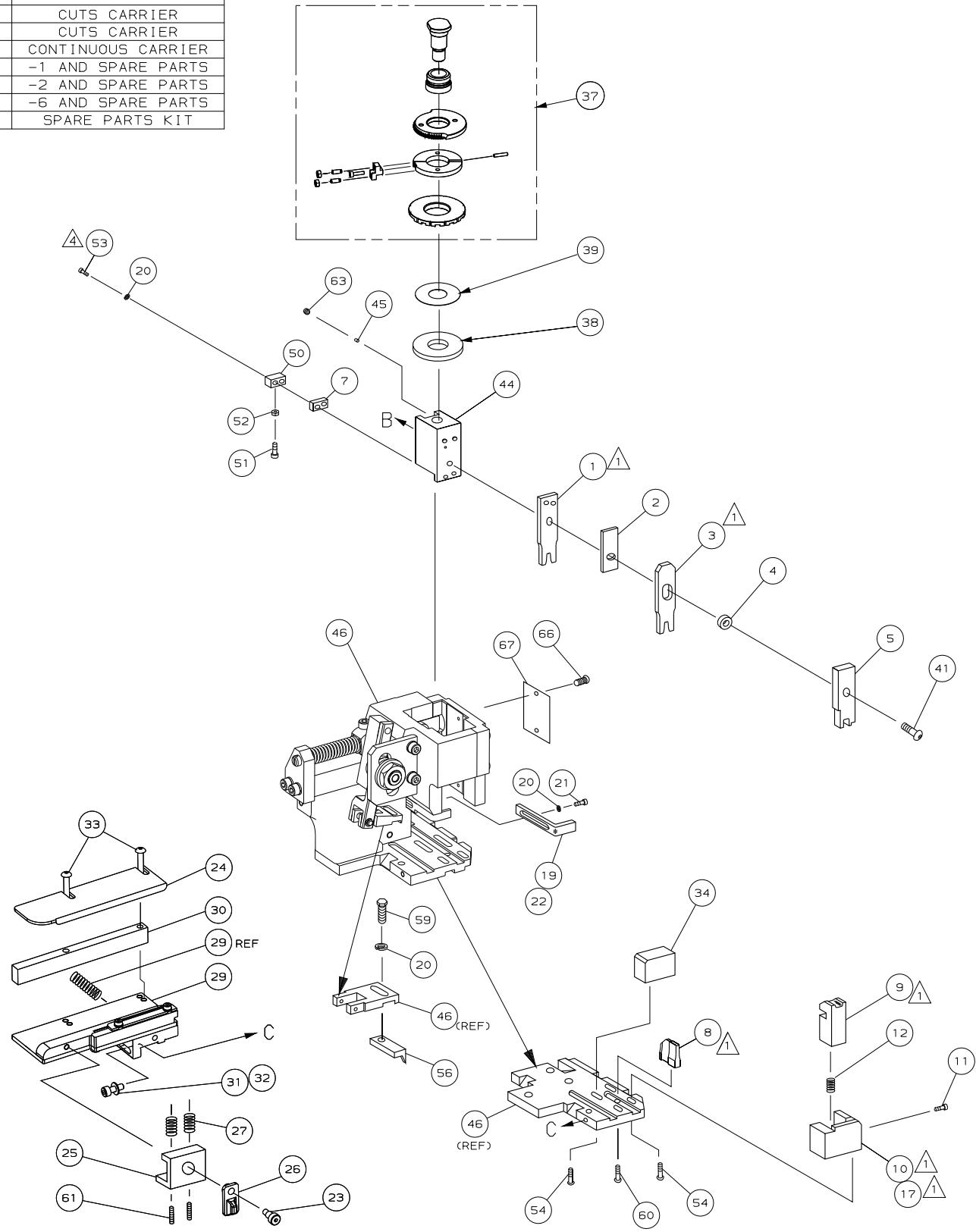
THE REPLACEMENT OCEAN STYLE APPLICATOR HAS THE
SAME TERMINATOR/PRESS INTERFACE AS APPLICATOR
1528274

THIS DRAWING IS A CONTROLLED DOCUMENT.		DWN	GOPALAKRISHNA HV		 TE Connectivity
DIMENSIONS:		CHK	RAGHAVENDRA		
TOLERANCES UNLESS OTHERWISE SPECIFIED:		APVD	RAGHAVENDRA		NAME
0 PLC ±		PRODUCT SPEC			FINE ADJ SIDE FD HD-I APPL
1 PLC ±		APPLICATION SPEC			SIZE
2 PLC ±		WEIGHT			CAGE CODE
3 PLC ±		CUSTOMER DRAWING			DRAWING NO
4 PLC ±		SCALE			RESTRICTED TO
ANGLES ±		SHEET 1 OF 2			REV B1
FINISH				©- 1528274	

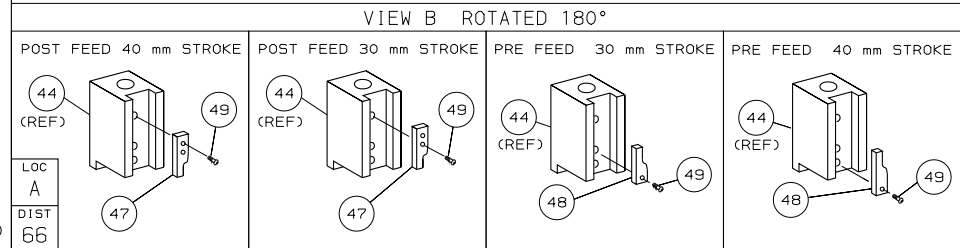


PART NUMBER	REV	FIRST USED	TERMINATOR	FEED TYPE	DESCRIPTION
1528274-1	B	-	LEADMAKER	MECH POST FEED	CUTS CARRIER
1528274-2	B	-	BENCH	MECH PRE FEED	CUTS CARRIER
1528274-6	B	-	LEADMAKER	MECH POST FEED	CONTINUOUS CARRIER
7-1528274-1	B	-	LEADMAKER	MECH POST FEED	-1 AND SPARE PARTS
7-1528274-2	B	-	BENCH	MECH PRE FEED	-2 AND SPARE PARTS
7-1528274-6	B	-	LEADMAKER	MECH POST FEED	-6 AND SPARE PARTS
7-1528274-7	A	-	-	-	SPARE PARTS KIT

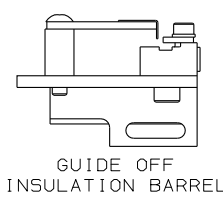
CRIMP DATA (AMP TERMINAL)			
TERMINAL NAME: JUNIOR-TIMER CONTACT			
CRIMP	SIZE	TYPE	RANGE
WIRE	1.57 [.062 IN]	F	0.20-0.50mm ²
INSUL	2.29 [.090 IN]	F	1.00-1.60 [.039-.063 IN]
WIRE STRIP LENGTH	APPL INSTRUCTION		
3.40-4.00 [.134-.157 IN]	408-8322 & 408-8490		
TERMINAL	114-18079 (A)	-	FEED
APPL SPEC	114-18080 (B)	-	12.70 [.500 IN]
TERMINALS APPLIED			
927871 (A)	-	-	-
926984 (B)	-	-	-
-	-	-	-
-	-	-	-
-	-	-	-
-	-	-	-
-	-	-	-
-	-	-	-
-	-	-	-
WIRE SIZE	CRIMP HEIGHT	REF SETTING	
mm ² AWG	*	*	
0.50mm ²	1.06 ±0.05 [.042 ±.002 IN]	B 4	
0.37mm ²	0.99 ±0.05 [.039 ±.002 IN]	B 9	
0.35mm ²	0.98 ±0.05 [.039 ±.002 IN]	C 0	
0.25mm ²	0.93 ±0.05 [.037 ±.002 IN]	C 2	
0.20mm ²	0.91 ±0.05 [.036 ±.002 IN]	C 4	



- ⚠ RECOMMENDED SPARE PARTS.
- 2. GREASE RAM, CAM, CAM FOLLOWER AND FEED ROD LIGHTLY.
- 3. LUBRICATE DAILY PER THE APPLICATOR INSTRUCTION SHEET SUPPLIED WITH THE APPLICATOR.
- ⚠ CUT TO LENGTH AT ASSY.
- ⚠ FEED ADJUSTMENT REQUIRED WHEN USING THIS TERMINAL



*** WARNING:**
ON INSTALLATION, SET WIRE DISC TO LARGEST WIRE SIZE SETTING. USE OF SETTINGS BELOW MIN REQ'D CRIMP HEIGHT SETTING WILL CAUSE DAMAGE TO CRIMP TOOLING.



QTY	REQD	PER	ASSY	PART NO	DESCRIPTION	ITEM NO		
-	1	1	1	1	1	1528274	PRINT, APPLICATOR LOG SHEET	73
-	1	1	1	1	1	1338705-3	DOCUMENTATION PACKAGE	72
-	-	-	-	-	-	-	-	71
-	-	-	-	-	-	-	-	70
-	-	-	-	-	-	-	-	69
-	-	-	-	-	-	-	-	68
-	1	1	1	1	1	461264-5	PLATE, IDENTIFICATION	67
-	2	2	2	2	2	21017-2	SCR,DRIVE (#2X.19) ID PLATE	66
-	-	-	-	-	-	-	-	65
-	1	1	1	1	1	3-18031-0	SCR,SKT SET (M6X6) RAM	64
-	-	-	-	-	-	-	-	63
-	2	2	2	2	2	2-18032-5	SCR,SET (M5X20) DRAG	62
-	1	1	1	1	1	18024-7	SCR,BHC (M4X10) ANVIL	61
-	1	1	1	1	1	5-18022-2	SCR,HEX (M4X8) FEED FINGER	60
-	-	-	-	-	-	-	-	59
-	-	-	-	-	-	-	-	58
-	-	-	-	-	-	-	-	57
-	1	1	1	1	1	1338685-1	PAWL, FEED	56
-	-	-	-	-	-	-	-	55
-	4	4	4	4	4	18024-8	SCR,BHC (M4X12) SHEAR HOLDER	54
-	2	2	2	2	2	9-18023-6	SCR,SHC (M4X14) TERM HLD DWN	53
-	1	1	1	1	1	18030-1	NUT,HEX (M3) HOLD DOWN	52
-	1	1	1	1	1	811242-5	BUMPER, HOLDDOWN	51
-	1	1	1	1	1	690753-2	SPACER, TONKER	50
-	1	1	1	1	1	18024-3	SCR,BHC (M3X10) CAM	49
-	-	-	-	-	-	-	-	48
-	1	1	1	1	1	1338675-1	CAM, PRE FEED 30 & 40 mm ST	47
-	1	1	1	1	1	1338676-1	CAM, POST FEED 30 & 40 mm ST	46
-	1	1	1	1	1	1320999-3	APPLICATOR BASIC SUBASSY	45
-	1	1	1	1	1	690191-1	PLUG, NYLON	44
-	1	1	1	1	1	1338660-1	RAM	43
-	-	-	-	-	-	-	-	42
-	1	1	1	1	1	2-18024-6	SCR,BHC (M8X25) RAM	41
-	-	-	-	-	-	-	-	40
-	1	1	1	1	1	690125-1	SHIM SUBASSY	39
-	1	1	1	1	1	469367-7	SPACER, FINE ADJUST	38
-	1	1	1	1	1	879103-3	FINE ADJUST HEAD SUBASSY	37
-	-	-	-	-	-	-	-	36
-	-	-	-	-	-	-	-	35
-	1	1	1	1	1	2-1320934-5	SUPPORT, TERMINAL	34
-	2	2	2	2	2	1-18024-0	SCR,BHC (M4X20) STRIP GUIDE	33
-	1	1	1	1	1	18027-2	WASHER, FLAT (M4)	32
-	1	1	1	1	1	1-18023-2	SCR,SKT CAP (M4X12) MOUNT BLOCK	31
-	1	1	1	1	1	1320908-4	SPACER, STRIP GUIDE	30
-	1	1	1	1	1	1633073-1	STRIP GUIDE PLATE ASSY	29
-	-	-	-	-	-	-	-	28
-	2	2	2	2	2	1-22284-0	SPRING, DRAG	27
-	1	1	1	1	1	356835-1	LEVER, DRAG RELEASE	26
-	1	1	1	1	1	240792-1	DRAG, TERMINAL	25
-	1	1	1	1	1	1320928-1	PLATE, STRIP GUIDE	24
-	1	1	1	1	1	980371-4	SCR,SHC SHLD	23
-	1	1	1	1	1	690472-2	STRIPPER	22
-	1	1	1	1	1	1-18023-1	SCR,SHC (M4X10) STRIPPER	21
-	4	4	4	4	4	18025-2	WASHER,LOCK (M4) STRIPPER	20
-	-	-	-	-	-	-	-	19
-	1	1	1	1	1	690472-1	STRIPPER	18
-	-	-	-	-	-	-	-	17
-	-	-	-	-	-	-	-	16
-	-	-	-	-	-	-	-	15
-	-	-	-	-	-	-	-	14
-	-	-	-	-	-	-	-	13
-	1	1	1	1	1	5-22280-0	SPRING, SHEAR	12
-	1	1	1	1	1	356885-4	STOP, SHEAR	11
-	-	-	-	-	-	-	-	10
-	1	1	1	1	1	1320921-1	HOLDER, SHEAR, FRONT (CUT)	9
-	1	1	1	1	1	462006-1	SHEAR, FLOAT (FRONT)	8
-	1	2	2	2	2	1-1333202-0	ANVIL	7
-	1	1	1	1	1	5-240641-9	SPACER, DEPRESSOR (REAR)	6
-	-	-	-	-	-	-	-	5
-	1	1	1	1	1	2-455889-0	DEPRESSOR, SHEAR (FRONT)	4
-	1	1	1	1	1	2-238011-2	SPACER, BLOCK CRIMPER	3
-	1	2	2	2	2	6-456134-3	CRIMPER, INSULATION	2
-	1	1	1	1	1	455888-7	SPACER, CRIMPER	1
-	1	2	2	2	2	1-456403-3	CRIMPER, WIRE	1

LOC A DIST 66	AMP 1756 REV 3-92	10-NOV-05	13:09:28	us024474	7	6	5	4	3
<p>BY AMP INCORPORATED. ALL RIGHTS RESERVED.</p> <p>THIS DRAWING IS UNPUBLISHED.</p> <p>RELEASED FOR PUBLICATION.</p> <p>LAYOUT L1426075</p> <p>SET UP GAGE 458637-3</p> <p>2000</p>									
<p>QTY REQD PER ASSY</p> <p>REVISION OF EACH ASSY NO (WHEN BLANK, USE DWG REVISION)</p>									
<p>DIMENSIONS: mm [INCHES]</p> <p>DO NOT SCALE PRINT.</p> <p>TOLERANCES UNLESS OTHERWISE SPECIFIED:</p> <p>1 PLC DEC ±0.5 [.02 IN]</p> <p>2 PLC DEC ±-</p> <p>3 PLC DEC ±-</p> <p>ANGLES ±-</p> <p>SURF TEXTURE: ✓</p> <p>REMOVE BURRS BREAK SHARP EDGES RO.3B MAX</p> <p>SCALE: D DWG NO: 1528274 SHEET: 1 of 1 REV: B</p>									
<p>MATL: HT TR FIN</p> <p>DR: 200C05 APP: 200C05 M. CLIFFORD</p> <p>CHK: REL: 200C05 M. CLIFFORD</p> <p>AMP Incorporated Harrisburg, PA 17105-3608</p> <p>NAME: FINE ADJ SIDE FD HD-I APPL MACHINE REF HD-I APPL</p> <p>CUSTOMER AND ASSEMBLY DRAWING</p>									