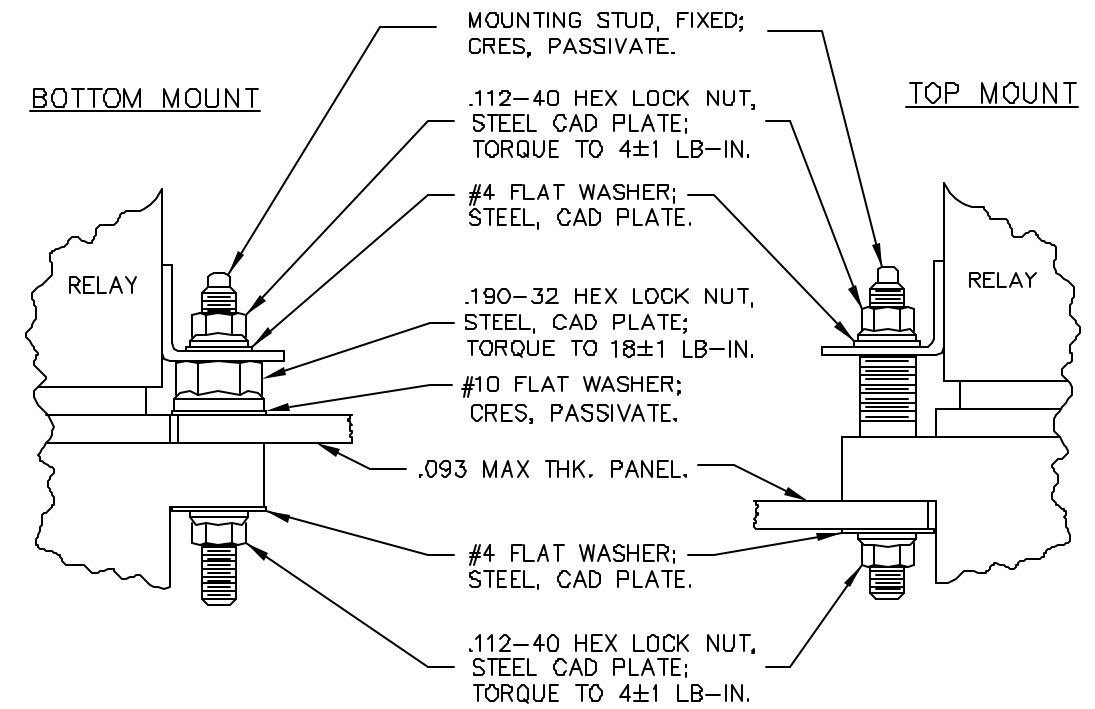
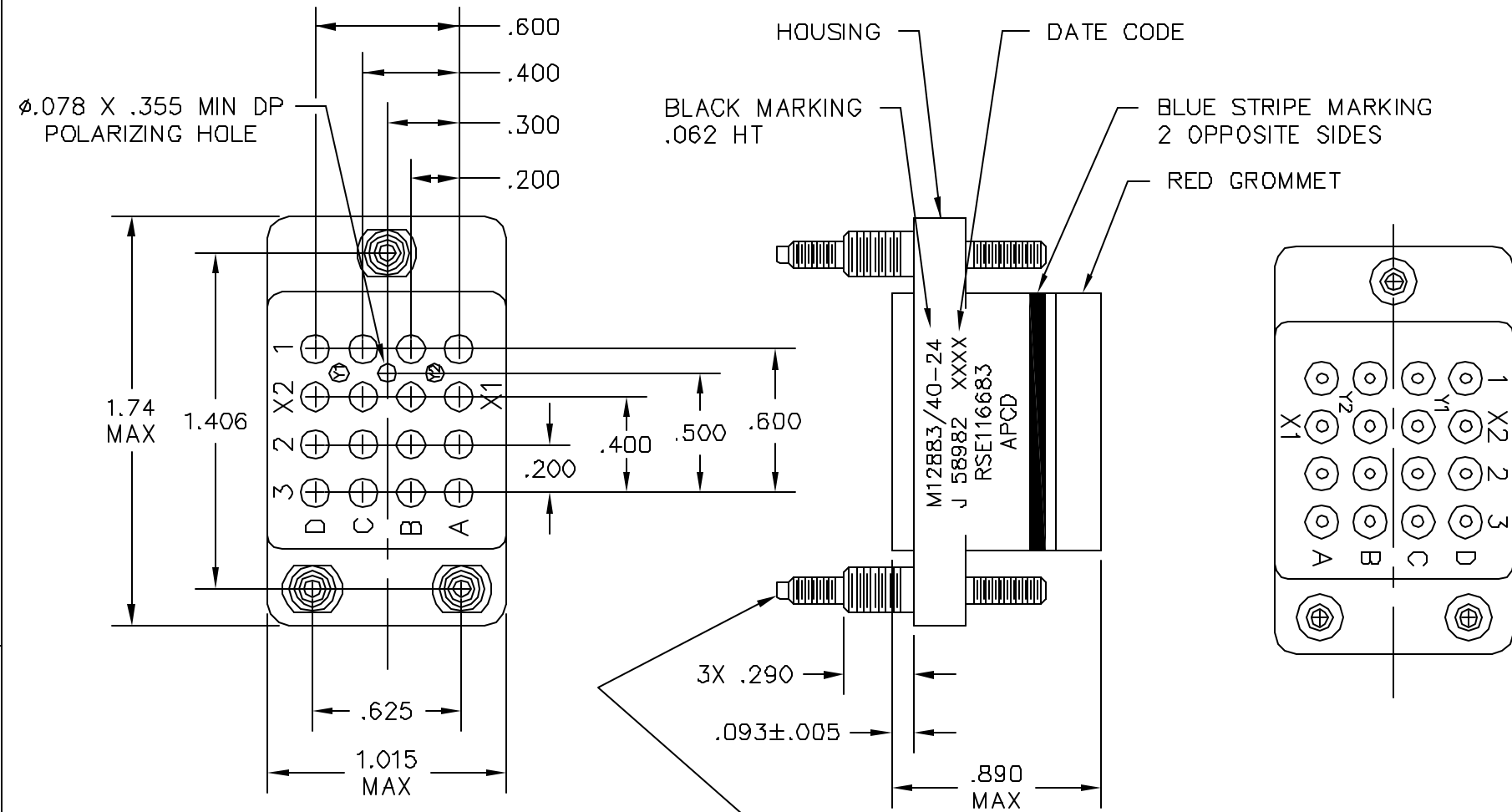


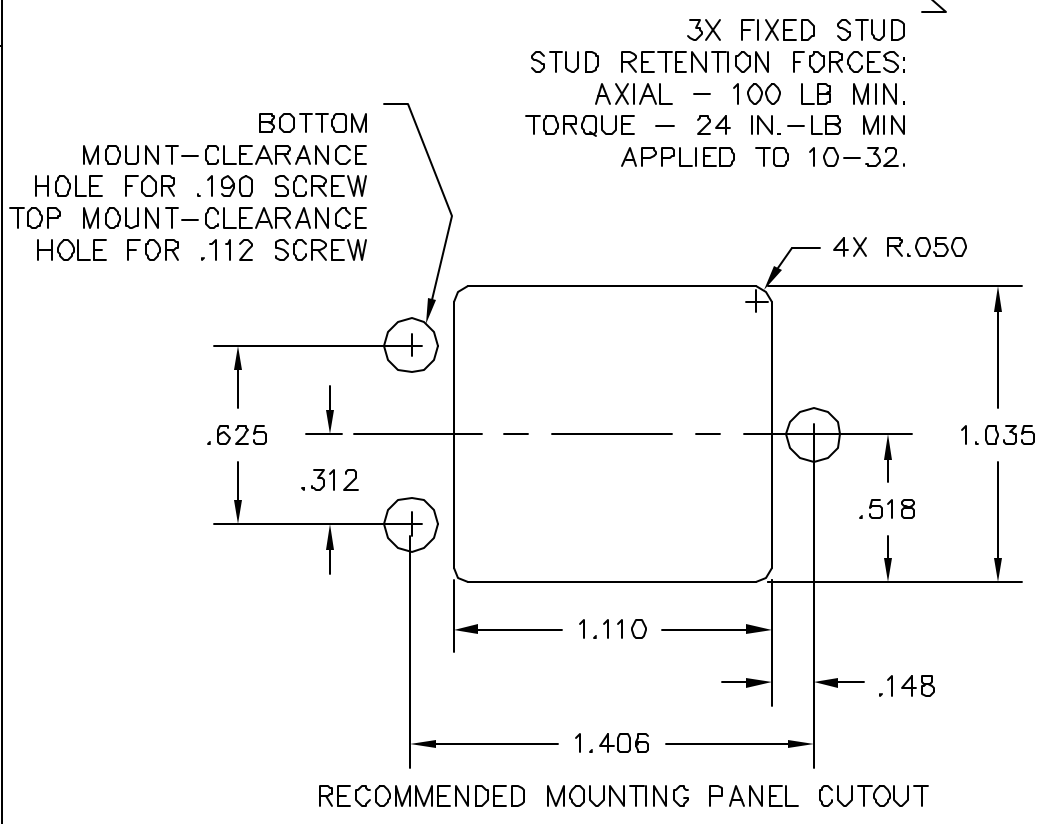
REV	ECN	APP'D
-	5484	JT 6/28/04



**MOUNTING INSTRUCTIONS**

- NOTES:
1. CONFORMS TO PERFORMANCE REQUIREMENTS OF MIL-PRF-12883.
  2. MATERIALS:
    - A. HOUSING - POLYETHERIMIDE, COLOR: BLUE-GREEN.
    - B. GROMMET - SILICONE ELASTOMER, 50±10 DUROMETER, COLOR: RED.
  3. SOCKET CONTACTS CONFORM TO PERFORMANCE REQUIREMENTS OF MIL-C-39029, GOLD OVER NICKEL PLATE - SEE TABLE.
  4. COMPLETE MOUNTING HARDWARE SUPPLIED.
  5. OPERATING TEMPERATURE: +125°C/-65°C CONTINUOUS.
  6. CONTACT INSTALLATION TOOLS:

CRIMP TOOL: #16 CONTACT M22520/1-01  
 POSITIONER: M22520/1-02  
 INSERTION/REMOVAL: M81969/14-03.



PART NO.	CONTACTS SUPPLIED	MARKING
RSE116682	NONE	RSE116683
RSE116683	(14) SIZE 16/16, M39029/92-533	

DIMENSIONS ANSI Y14.5M UNITS: INCHES ACAD FILE	TOLERANCES .XX ±.01 .XXX ±.005 ANGLES ±2°	PROJECTION 	<b>Amphenol Pcd</b>		
			SPECIFICATION DRAWING		
			ENGR S. KONDO 6/25/2004		
ORIGINAL	THIS DOCUMENT CONTAINS PROPRIETARY INFORMATION WHICH IS THE CONFIDENTIAL PROPERTY OF AMPHENOL PCD INC. PEABODY, MA		TITLE RELAY SOCKET, 16 POS, SIZE 16, M12883/40-24		
			SIZE B	DWG NO. RSE116682	REV -
			CODE: 58982	SCALE: 3:2	SHEET 1 OF 1

RSE116682

RSE116682