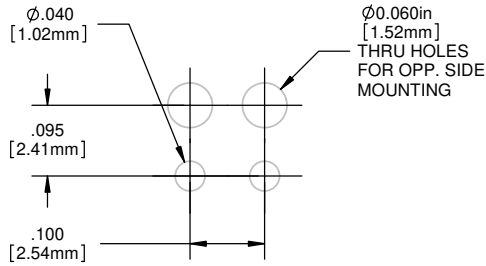


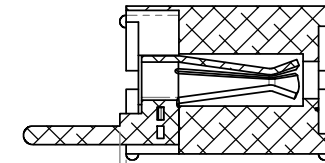
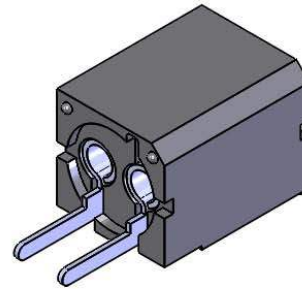
NOTES:

1. ROHS COMPLIANT
2. MATERIAL: HOUSING - NYLON 6/6, U.L.94-V0 RATING, BLACK (UNLESS OTHERWISE SPECIFIED)  
CONTACTS - PHOSPHOR BRONZE, TIN PLATED
3. MOUNTING: SPACING ON .250" [6.35mm] CENTERS. OPTIONAL .060" [1.52mm] HOLES FOR OPPOSITE SIDE MOUNTING. SAME SIDE MOUNTING, DELETE THE .060" [1.52mm] HOLES (SEE PATTERN)
4. OPTO: STANDARD VISIBLE, IR LED, OR PHOTO DETECTOR WITH LEADS ON .100" [2.54mm] CENTERS
5. LED LEAD DIMENSIONS: MINIMUM .017" [.43mm] ROUND OR SQUARE SHAPE. MAXIMUM .030" [.76mm] THICKNESS - .040" [1.02mm] WIDTH
6. U.S. & FOREIGN PATENTS ISSUED

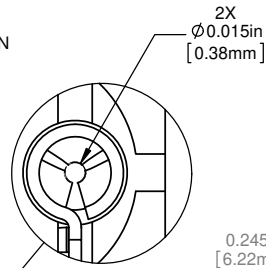
REVISIONS					
ECN #	REV.	DESCRIPTION	DATE	INITIALS	CHKD
	001	REVISED PER ECR 111009AZ01	6/20/10	SMU	DZ
426	002	REVISED PER ECR 041212KH02	4/13/12	KH	ED



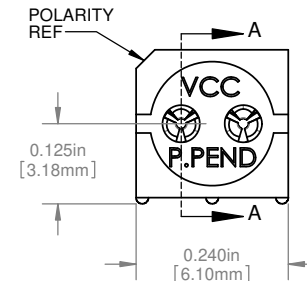
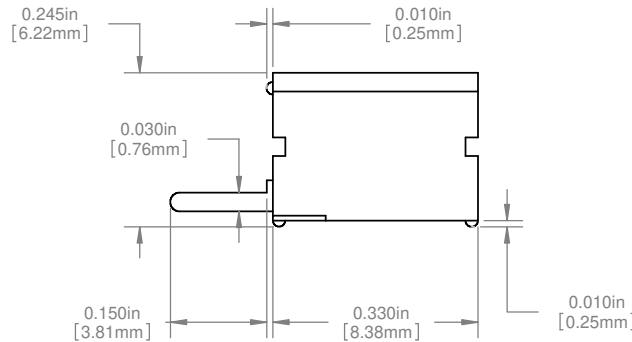
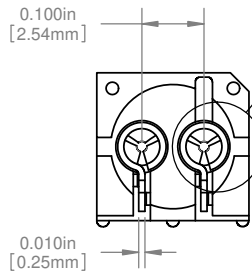
PCB HOLE PATTERN



SECTION A-A



DETAIL B  
SCALE 10 : 1



ORDERING CODE: PCV 220

DIMENSION STYLE: INCHES / MM GENERAL TOLERANCES UNLESS OTHERWISE SPECIFIED		APPROVAL		DATE	
INCHES	MM	DRAWN	SMU	6/20/10	
X	± .020	± .508	CHECKED	DZ	6/20/10
XX	± .010	± .254			
XXX	± .005	± .127			
ANGLE ± 1°					
BREAK ALL CORNERS AND SHARP EDGES 60° MAX					
THIRD ANGLE PROJECTION					
PROPRIETARY AND CONFIDENTIAL					
THE INFORMATION CONTAINED IN THIS DRAWING IS THE SOLE PROPERTY OF VISUAL COMMUNICATIONS COMPANY, INC. ANY REPRODUCTION IN PART OR AS A WHOLE WITHOUT THE WRITTEN PERMISSION OF VISUAL COMMUNICATIONS COMPANY, INC IS PROHIBITED.					

MATERIAL	SEE NOTES
FINISH	SEE NOTES
DO NOT SCALE DRAWING	

**VCC**  
12780 DANIELSON CT, SUITE A, POWAY, CA 92064 U.S.A  
PHONE: (800) 522-5546 EMAIL: vccsales@vcc-lite.com

TITLE:  
**P-C-LITE® VERTICAL MOUNT**

SIZE	DWG. NO.	REV
<b>B</b>	PCV 220	<b>002</b>

SCALE: 5:1 SHEET 1 OF 1