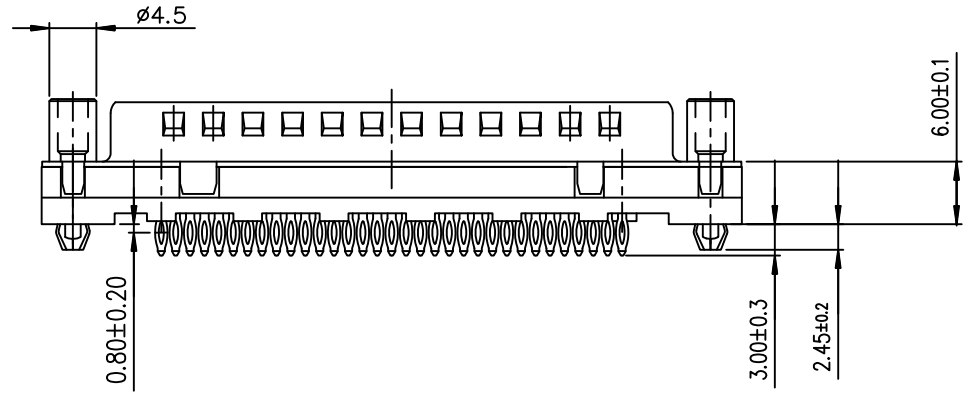
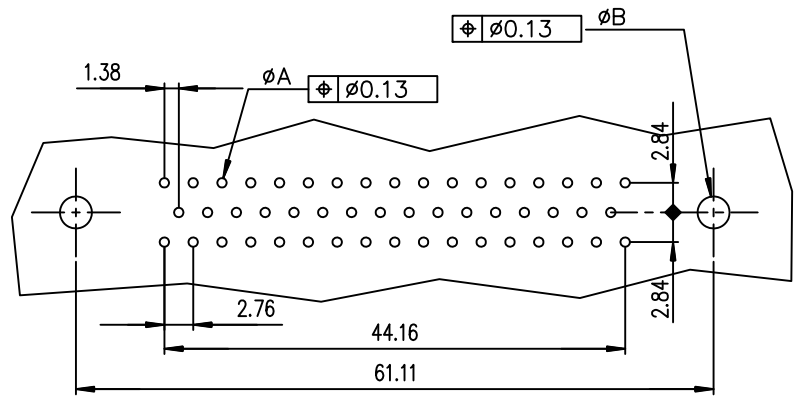


PC board drilling dimensions
(after plating – thickness: 1.60 to 3.20 mm)



ROHS PART NUMBER

PART NUMBER	
200 Mating	D50P91C4GI00LF
500 Mating	D50P91C6GI00LF

GENERAL CHARACTERISTICS AND ROHS INFORMATIONS:
SEE DRAWING C01-8646-0001

mat'l. code		surface ISO 1302		tolerance ISO 406 ISO 1101		projection		product family D-SUB	
ltr	ecn no	dr	date	tolerances unless otherwise specified		mm		title	
A	-	LEN	1996-09-17	angles	linear	.0±0.1		MALE CRS DELTA D 50	
B	LS05-004	MPE	2005-02-12			.00±0.1		EUROPE STRAIGHT PF SCREWLOCK M3	
C	LS06-0095	LGO	2006-07-20	0°±2°		.000±0.1		scale 2:1	
D	LS06-0140	LGO	2006-11-21	dr	PESSON	1996-09-17		dwg no sheet 1 of 1 size	
E	111-0062	RPK	2011-04-05	eng	MITHUN PAUL	2016-06-06		Amphenol FCI C01-8646-0500 A3	
F	ELX-I-24020	AAB	2016-06-06	chr	ATHUL A.B	2016-06-06		type Product Customer Drawing	
sheet index		revision F		appd BIJU K PAUL		2016-06-06			
sheet 1		1							