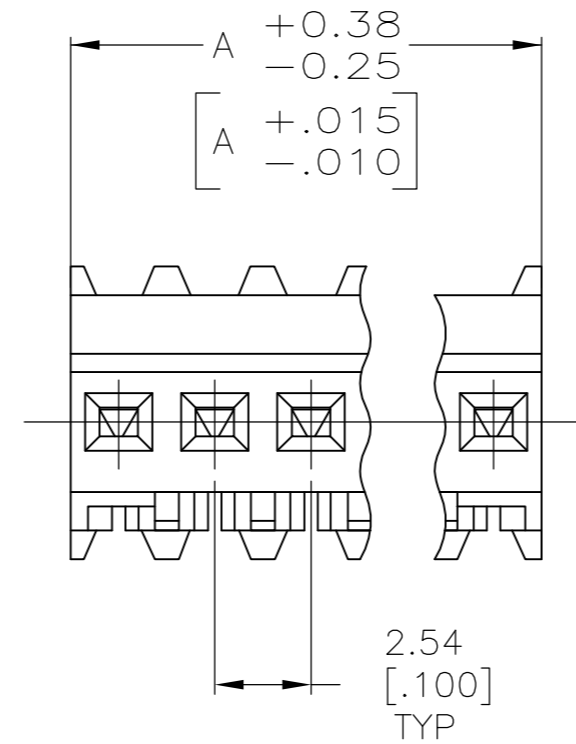
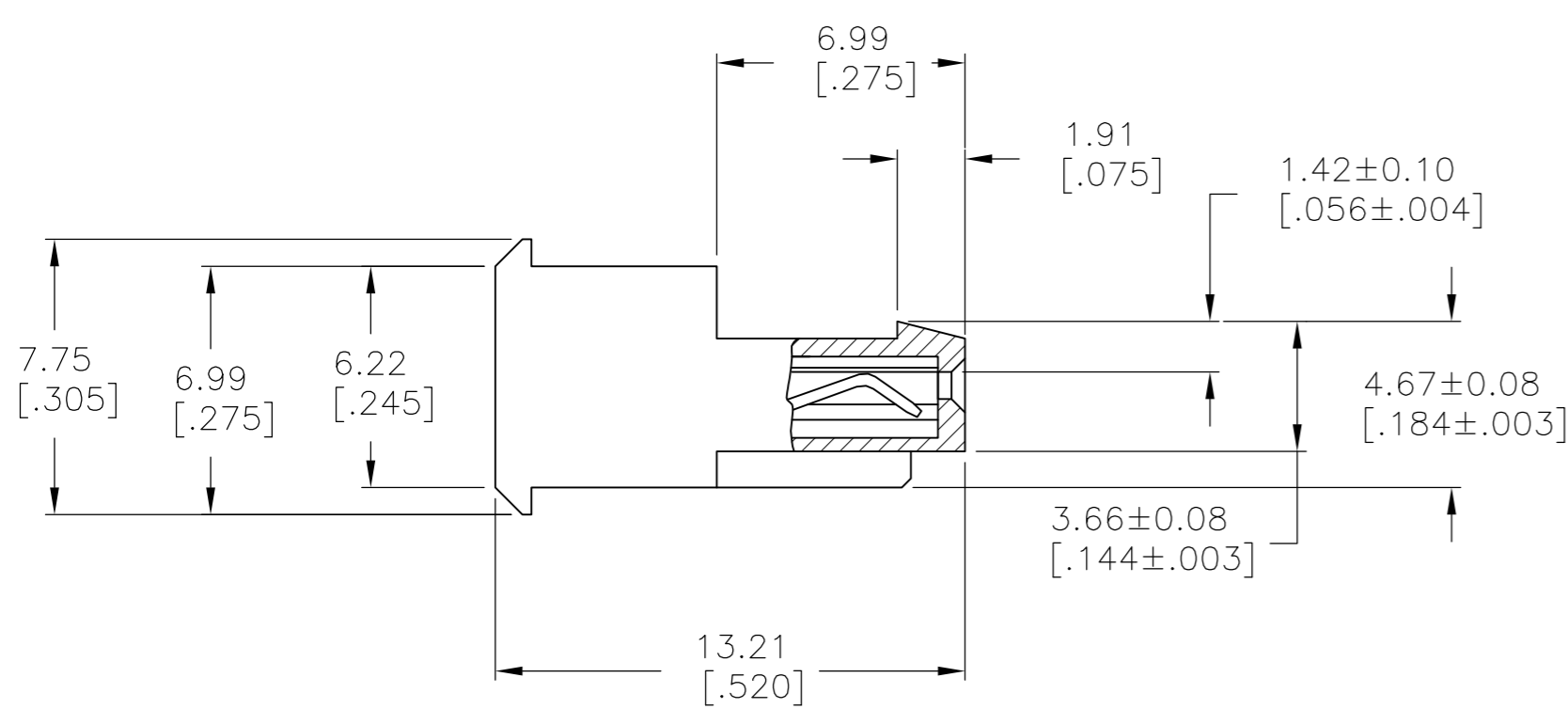
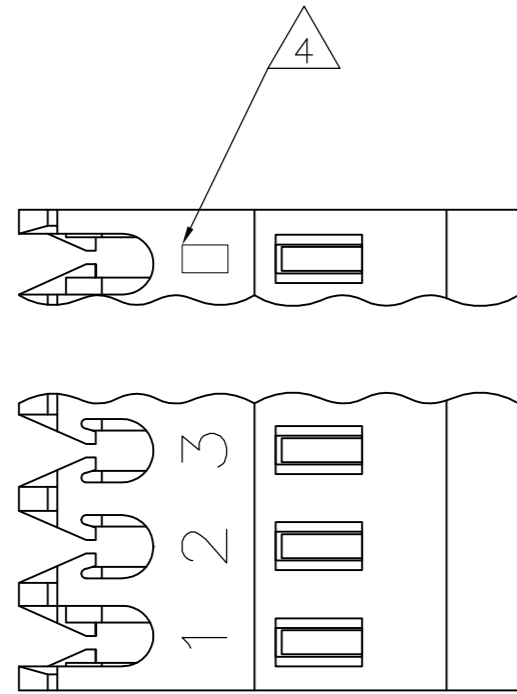


THIS DRAWING IS UNPUBLISHED. RELEASED FOR PUBLICATION
 © COPYRIGHT BY TYCO ELECTRONICS CORPORATION. ALL INTERNATIONAL RIGHTS RESERVED.

| LOC | DIST | REVISIONS | | | |
|-----|------|-------------|---------------------------|---------|--------|
| P | LTR | DESCRIPTION | DATE | DWN | APVD |
| CM | 00 | D | REVISED PER ECO-08-027491 | 05NOV08 | HMR DB |



- 1 MATERIAL: CONNECTOR - NYLON UL94V-2 (BLACK). CONTACTS - 0.30[.012] THICK COPPER ALLOY MATTE WHISKER MITIGATED TIN 0.00203[.000080] MIN THICKNESS OVER NICKEL UNDERPLATE OR BRIGHT TIN-LEAD 93/7 0.00203[.000080] MIN THICKNESS. SEE FINISH COLUMN FOR PLATING TYPE.
- 2 CONTACTS ACCEPT 22 AWG WIRE WITH 1.52[.060] MAX INSULATION DIAMETER.
- 3 CONTACTS MUST ACCEPT 0.64±0.03[.025±.001] SQUARE POST AND REMAIN LOCKED IN POSITION.
- 4 IDENTIFICATION NUMBER FOR LAST CIRCUIT MAY NOT APPEAR ON ALL ASSEMBLIES.
- 5 DIMENSIONS IN BRACKETS ARE IN INCHES.
- 6 HOUSING FEATURES ARE: FEED THRU WITH LOCKING RAMP.

| LEADFREE | DIM A | NO. OF CIRCUITS | PART NO. |
|----------|--------------|-----------------|----------|
| YES | 17.78 [.700] | 7 | 644943-7 |

METRIC

| | | | | |
|--|--|----------------------------------|--|--------------------|
| THIS DRAWING IS A CONTROLLED DOCUMENT. | | DWN S. CARPENTER 19AUG2003 | Tyco Electronics Corporation Harrisburg, PA 17105-3608 | |
| DIMENSIONS: mm [INCHES] | | CHK D. BOSSI 19AUG2003 | NAME MTA-100 CONNECTOR ASSEMBLY, 22 AWG, BLACK, UL94V-2, SPECIAL | |
| TOLERANCES UNLESS OTHERWISE SPECIFIED: 0 PLC ± 1 PLC ± 2 PLC ± 3 PLC ± 0.13[.005] 4 PLC ± ANGLES ± 0°30' | | APVD D. BOSSI 19AUG2003 | PRODUCT SPEC 108-1050 | |
| MATERIAL | | APPLICATION SPEC 114-1019 | SIZE A2 | CAGE CODE 00779 |
| FINISH | | WEIGHT | DRAWING NO C=644943 | RESTRICTED TO - |
| 1 | | CUSTOMER DRAWING | | SCALE 5:1 |
| | | SHEET 1 of 1 | | REV D |