

1 2 3 4 5 6 7 8

snap latch assembly p/n description :

R - M B 1 - X - X P X X - X X X X - X

A

1 Bonded

2 Medical

3 Style B1=PK(Receptacle with two nuts)
(back panel mounting)
----solder termination

B

4 Outer shell material
G=Grey psu
B=Black psu
M=White psu
F=Black pei
P=Grey pei

5 Back nut material
0=Black
1=White
2=Red
4=Yellow
5=Green
6=Blue
8=Grey

6 Insulator P=Peek

7 Contact diameter
1=1.3mm (only for 2;3 pin)
2=0.9mm (only for 4;5 pin)
3=0.7mm (only for 6;7;8 pin)
4=0.5mm (only for 9;10;12;14 pin)

C

8 Contact plating
1=Gold plated 1u"
2=Gold plated 20u"
3=Gold plated 30u"

9 Cable collet
0=No cable collet

D

10 Coding
0= 0°
A= 40°
C= 60°
E= 80°
H=170°
S= 190°
J= 205°

E

11 Number of contacts
02=2 Pin
03=3 Pin
04=4 Pin
05=5 Pin
06=6 Pin
07=7 Pin
08=8 Pin
09=9 Pin
10=10 Pin
12=12 Pin
14=14 Pin

12 Logo
0="nextron" Logo AND "GRASP HERE" Logo
G=NO LOGO,with "GRASP HERE" Logo

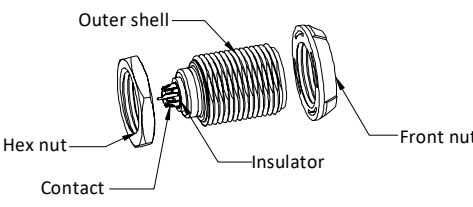
ENGINEERING CORPORATION

ISSUE DATE

2020/04/14

nextron

This file is automatically issued by EPDM and is not valid without the issue date



Positions	View from termination side	
	Pin part	
2 Pin		
3 Pin		
4 Pin		
5 Pin		
6 Pin		
7 Pin		
8 Pin		
9 Pin		
10 Pin		
12 Pin		
14 Pin		

Notes:

1.Material
Outer shell : psu/pei
Insulator : peek
Contact : cooper alloy
Hex nut : copper alloy
Front nut : psu/pei

2.Mechanical characteristics
Endurance: 300 mating cycles or 2000 mating cycles
Insertion force: 19.6 N Max
Pull-out force: 19.6 N Max
Retention force : 90N Min.

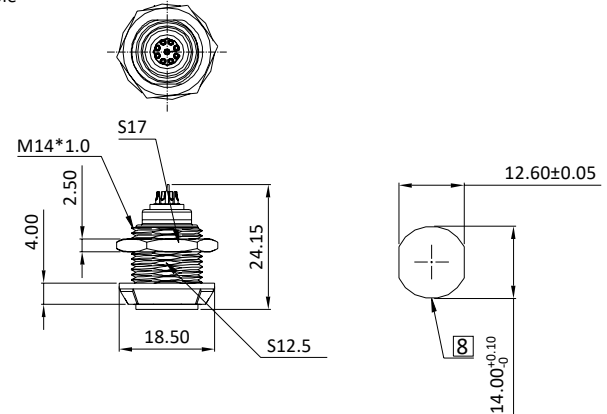
3.Electrical specifications
Insulation resistance: 1000MΩ


Characteristics	2Pin	3Pin	4Pin	5Pin	6Pin	7Pin	8Pin	9Pin	10Pin	12Pin	14Pin
Contact resistance /mΩ max	3.5	3.5	4.5	4.5	6.5	6.5	6.5	8.5	8.5	8.5	8.5
Dielectric withstanding volt /kV ac rms	1.2	1.2	1.2	1.05	1.05	1.05	1.05	0.85	0.85	0.75	0.6
Current rating /A per pin	10	10	8	7	6	5	5	3	3	2.5	2

4.Characteristics
Temperature range: Psu shell: -50~+150°C
Pei shell : -50~+170°C

Protection index: IP 50
Humidity: 60°C at 95% HR comply with EIA-364-31

5.Number of contact : 2 to 14 position
6.All dimensions are in millimeters.
7.RoHS directive compliance
Panel hole



UNITS: ■ mm □ inch	SIZE A3	NAME: SNAP LATCH Receptacle with tow nut						
GENERAL TOLERANCE: (UNLESS SPECIFIED)		PART NO: RMB1XXPXXXXXX	TITLE: CUSTOMER DWG.					
4 PLACE	± **	mm	inch	APPD: Alex梁良駒	2020/04/14	DWG NO: 010-0000-459	C	
3 PLACE	± **	mm	inch	CHKD: Ken張永	2020/04/14			
2 PLACE	± 0.20	mm	inch	DRAW: Ellen孫郁婷	2020/04/14			
1 PLACE	± 0.50	mm	inch	DESIGN: Kim徐育金	2020/04/13	SCALE	SHEET	REV.
ANGLES	X° ± 3°					1/1	1/4	A6

A6	UPDATE DWG.	04/13'20
REV.	DESCRIPTION	DATE

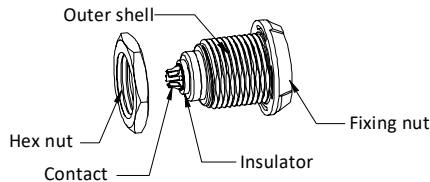
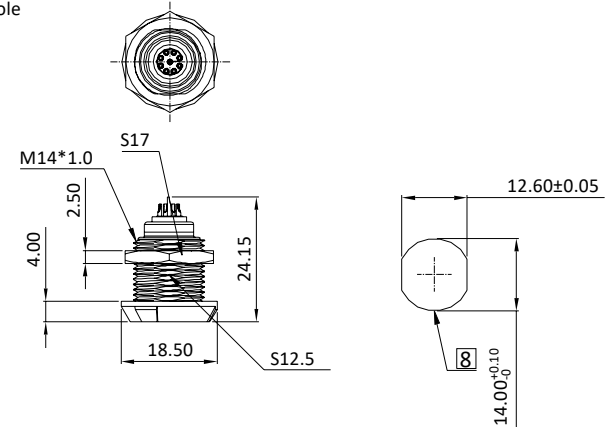
Snap latch assembly p/n description :

	R	-	M	B	4	-	X	-	X	-	X	X	-	X	X	X	-	X	X	X	-	X
1 Bonded																						
2 Medical																						
3 Style	B4=PK(Receptacle,nut fixing)																					
	----solder termination																					
4 Outer shell material	G=Grey psu B=Black psu M=White psu F=Black pei P=Grey pei																					
5 Back nut material	0=Black 1=White 2=Red 4=Yellow 5=Green 6=Blue 8=Grey																					
6 Insulator	P=Peek																					
7 Contact diameter	1=1.3mm (only for 2;3 pin) 2=0.9mm (only for 4;5 pin) 3=0.7mm (only for 6;7;8 pin) 4=0.5mm (only for 9;10;12;14 pin)																					
8 Contact plating	1=Gold plated 1u" 2=Gold plated 20u" 3=Gold plated 30u"																					
9 Cable collet	0=No cable collet																					
10 Coding	0= 0° A= 40° C= 60° E= 80° H=170° S= 190° J= 205°																					
11 Number of contacts	02=2 Pin 03=3 Pin 04=4 Pin 05=5 Pin 06=6 Pin 07=7 Pin 08=8 Pin 09=9 Pin 10=10 Pin 12=12 Pin 14=14 Pin																					
12 Logo	0="nextron" Logo AND "GRASP HERE" Logo G=NO LOGO,with "GRASP HERE" Logo																					

Positions	View from termination side	Pin part
2 Pin		
3 Pin		
4 Pin		
5 Pin		
6 Pin		
7 Pin		
8 Pin		
9 Pin		
10 Pin		
12 Pin		
14 Pin		

Notes:

- Material
Outer shell : psu/pei
Insulator : peek
Contact : cooper alloy
Hex nut : copper alloy
Front nut : psu/pei
 - Mechanical characteristics
Endurance: 300 mating cycles or 2000 mating cycles
Insertion force: 19.6 N Max
Pull-out force: 19.6 N Max
Retention force : 90N Min.
 - Electrical specifications
Insulation resistance: 1000MΩ
- | Characteristics | 2Pin | 3Pin | 4Pin | 5Pin | 6Pin | 7Pin | 8Pin | 9Pin | 10Pin | 12Pin | 14Pin |
|---|------|------|------|------|------|------|------|------|-------|-------|-------|
| Contact resistance /mΩ max | 3.5 | 3.5 | 4.5 | 4.5 | 6.5 | 6.5 | 6.5 | 8.5 | 8.5 | 8.5 | 8.5 |
| Dielectric withstanding volt /kV ac rms | 1.2 | 1.2 | 1.2 | 1.05 | 1.05 | 1.05 | 1.05 | 0.85 | 0.85 | 0.75 | 0.6 |
| Current rating /A per pin | 10 | 10 | 8 | 7 | 6 | 5 | 5 | 3 | 3 | 2.5 | 2 |
- Characteristics
Temperature range: Psu shell: -50~+150°C
Pei shell : -50~+170°C
Protection index: IP 50
Humidity: 60°C at 95% HR comply with EIA-364-31
 - Number of contact : 2 to 14 position
 - All dimensions are in millimeters.
 - RoHS directive compliance
 Panel hole



A6	UPDATE DWG.	04/13'20
REV.	DESCRIPTION	DATE

UNITS: ■ mm □ inch	SIZE A3	NAME: SNAP LATCH Receptacle,nut fixing			
GENERAL TOLERANCE: (UNLESS SPECIFIED)		PART NO: RMB4XXPXXXXXX	TITLE: CUSTOMER DWG.		
4 PLACE ± **	mm ± **	inch ± **	APPD: Alex梁良駒	2020/04/14	DWG NO: 010-0000-459
3 PLACE ± **	mm ± **	inch ± **	CHKD: Ken張永	2020/04/14	
2 PLACE ± 0.20	mm ± **	inch ± **	DRAW: Ellen孫郁婷	2020/04/14	SCALE SHEET REV. 1/1 2/4 A6
1 PLACE ± 0.50	mm ± **	inch ± **	DESIGN: Kim徐育金	2020/04/13	
ANGLES X°± 3°					

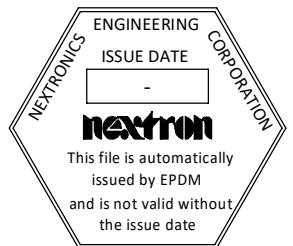
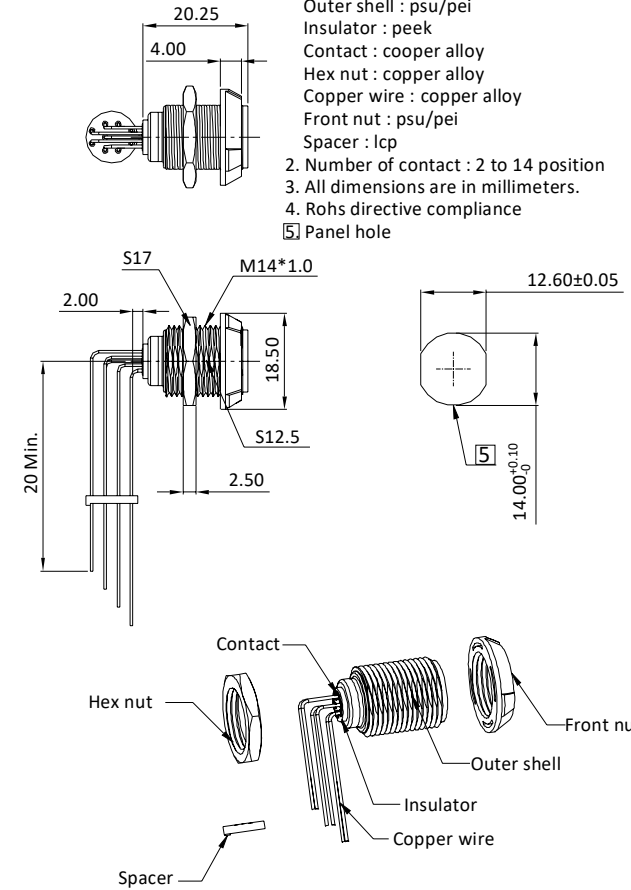
Snap latch assembly p/n description :

		R	M	B	3	-	X	-	X	-	X	X	-	X	X	X	-	X
1	Bonded																	
2	Medical																	
3	Style	B3=PK(Receptacle with two nuts,with 90° contacts for printed circuit) (back panel mounting) -----Solder termination																
4	Outer shell Material	G=Grey psu																
		B=Black psu																
		M=White psu																
		F=Black pei																
		P=Grey pei																
5	Back nut material	0=Black																
		1=White																
		2=Red																
		4=Yellow																
		5=Green																
		6=Blue																
		8=Grey																
6	Insulator	P=Peek																
7	Contact diameter	1=1.3mm (only for 2;3 pin)																
		2=0.9mm (only for 4;5 pin)																
		3=0.7mm (only for 6;7;8 pin)																
		4=0.5mm (only for 9;10;12;14 pin)																
8	Contact plating	1=Gold plated 1u"																
		2=Gold plated 20u"																
		3=Gold plated 30u"																
9	Cable collet	0=No cable collet																
10	Coding	0= 0°																
		A= 40°																
		C= 60°																
		E= 80°																
		H= 170°																
		S= 190°																
		J= 205°																
11	Number of contacts	02=2 Pin																
		03=3 Pin																
		04=4 Pin																
		05=5 Pin																
		06=6 Pin																
		07=7 Pin																
		08=8 Pin																
		09=9 Pin																
		10=10 Pin																
		12=12 Pin																
		14=14 Pin																
12	Logo	0="nextron" logo and "GRASP HERE" logo																
		G=NO LOGO,with "GRASP HERE" logo																

Positions	View from termination side
	Pin part
2 Pin	
3 Pin	
4 Pin	
5 Pin	
6 Pin	
7 Pin	
8 Pin	
9 Pin	
10 Pin	
12 Pin	
14 Pin	

Notes :

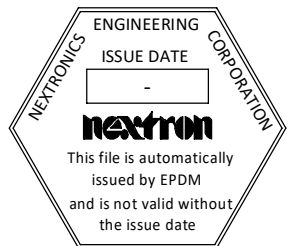
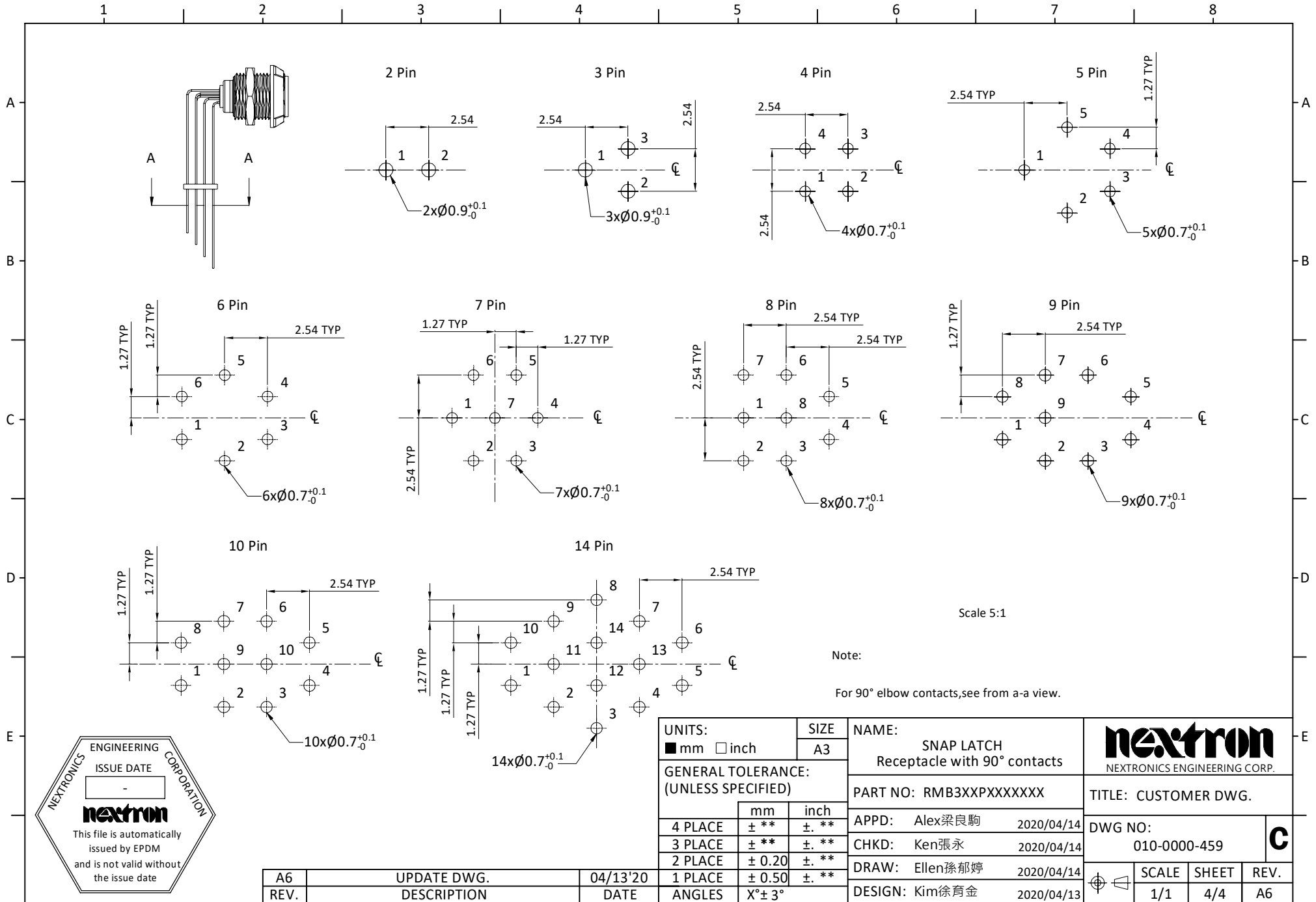
- Material
Outer shell : psu/pei
Insulator : peek
Contact : cooper alloy
Hex nut : copper alloy
Copper wire : copper alloy
Front nut : psu/pei
Spacer : lcp
- Number of contact : 2 to 14 position
- All dimensions are in millimeters.
- Rohs directive compliance



UNITS: ■ mm □ inch	SIZE A3	NAME: SNAP LATCH Receptacle with 90° contacts			
GENERAL TOLERANCE: (UNLESS SPECIFIED)		PART NO: RMB3XXPXXXXXXX	TITLE: CUSTOMER DWG.		
4 PLACE ± **	mm ± **	APPD: Alex梁良駒 2020/04/14	DWG NO: 010-0000-459		
3 PLACE ± **	inch ± **	CHKD: Ken張永 2020/04/14	C		
2 PLACE ± 0.20	± **	DRAW: Ellen孫郁婷 2020/04/14			
1 PLACE ± 0.50	± **	DESIGN: Kim徐育金 2020/04/13	SCALE 1/1	SHEET 3/4	REV. A6
ANGLES	X° ± 3°				

A6	UPDATE DWG.	04/13'20
REV.	DESCRIPTION	DATE

CONFIDENTIAL: THIS DOCUMENT CONTAINED THE INFORMATION IS PROPRIETARY AND CONFIDENTIAL TO Nextronics Engineering Corp. NO PERSON IS ALLOWED TO USE COPY, PUBLISH OR OTHERWISE DISCLOSE THE INFORMATION TO OTHERS, UNLESS BY THE PRIOR WRITTEN EXPRESS AUTHORIZATION OF Nextronics Engineering Corp. (C)COPYRIGHT- Nextronics Engineering Corp.



A6	UPDATE DWG.	04/13'20
REV.	DESCRIPTION	DATE

UNITS:	SIZE	NAME:
■ mm □ inch	A3	SNAP LATCH
GENERAL TOLERANCE:		Receptacle with 90° contacts
(UNLESS SPECIFIED)		PART NO: RMB3XXPXXXXXX
4 PLACE	± **	± **
3 PLACE	± **	± **
2 PLACE	± 0.20	± **
1 PLACE	± 0.50	± **
ANGLES	X° ± 3°	

APPD:	Alex梁良駒	2020/04/14
CHKD:	Ken張永	2020/04/14
DRAW:	Ellen孫郁婷	2020/04/14
DESIGN:	Kim徐育金	2020/04/13

nexttron		NEXTRONICS ENGINEERING CORP.	
TITLE: CUSTOMER DWG.		DWG NO:	
		010-0000-459	
SCALE	SHEET	REV.	
1/1	4/4	A6	

CONFIDENTIAL: THIS DOCUMENT CONTAINED THE INFORMATION IS PROPRIETARY AND CONFIDENTIAL TO Nexttronics Engineering Corp. NO PERSON IS ALLOWED TO USE COPY, PUBLISH OR OTHERWISE DISCLOSE THE INFORMATION TO OTHERS, UNLESS BY THE PRIOR WRITTEN EXPRESS AUTHORIZATION OF Nexttronics Engineering Corp. (C)COPYRIGHT- Nexttronics Engineering Corp.