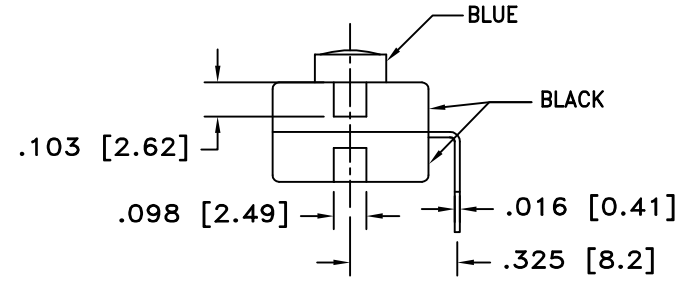
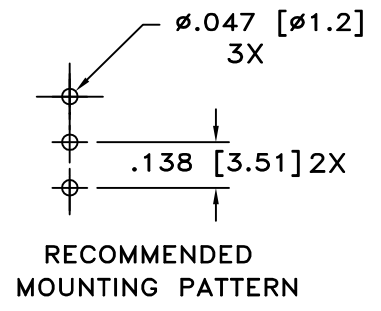
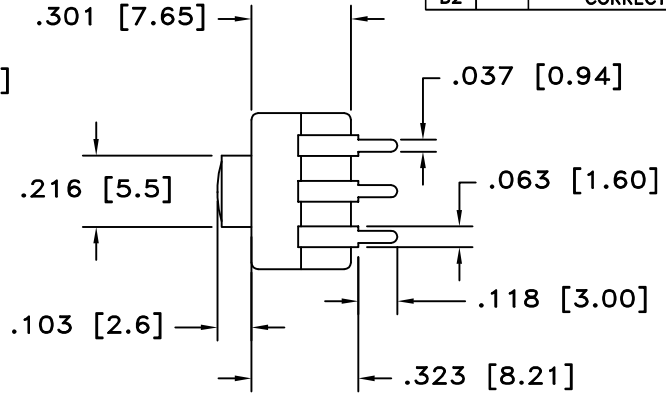
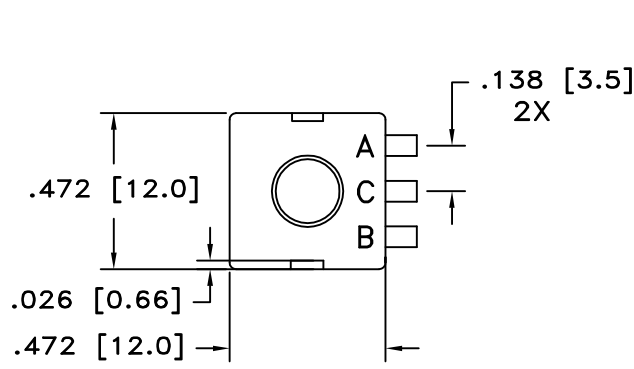
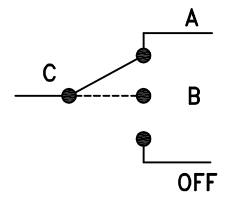


LTR	EN	DESCRIPTION	APPR	BY	DATE
A	-	INITIAL RELEASE	RB	NH	09-30-05
A1	-	ADDED CUSTOMER PART NUMBER.	RB	DC	12-20-05
A2	-	ADDED COLOR OF ACTUATOR (TEAL)	RB	DC	12-28-05
A3	-	CHANGE SCHEMATIC DIAGRAM TO MATCH SWITCH OPERATION.	RB	DC	02-13-06
B	-	UPDATED DRAWING TO MATCH SAMPLE PARTS. CALL OUT DIMENSIONS BOTH IN INCHES & MM. CHANGE PLUNGER COLOR FROM TEAL TO BLUE.	MT	DC	10-18-07
B1	-	ADDED ELETRICAL RATING 12VDC, 500mA	MT	DC	08-24-12
B2	-	CORRECTED SCHEMATIC DIAGRAM	MT	DC	09-07-12




JUDCO INVENTORY NO. 50-0088-00
 SWITCH TYPE: SPDT, J 977-8 (ON A- ON B-OFF)
 ELECTRICAL RATING: 12 VDC, 500mA

CUSTOMER:
 CUSTOMER PN:
 APPROVED BY: _____
 DATE: _____



SCHEMATIC

DIMENSIONS IN INCHES DIMENSIONS ARE REFERENCE		 HARBOR CITY CALIFORNIA TITLE MINI FLPK, J977-8 W/BENT TERMINALS
DRAWN: NH	09-30-05	
APPR: KJ	09-07-12	DWG. NO. 1415-862
ENG'G: IS	09-07-12	SHEET 1 OF 1
1415U862B2.DWG		

This document embodies a product, component, and/or design proprietary to JUDCO MANUFACTURING INC., and which is protected either as a trade secret, by U.S. Patent, or by copyright. It may not be used in any way without written express consent of JUDCO MANUFACTURING INC.