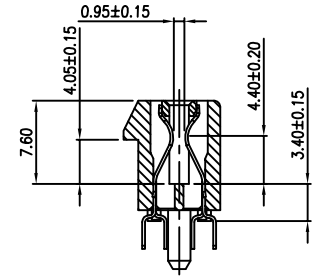
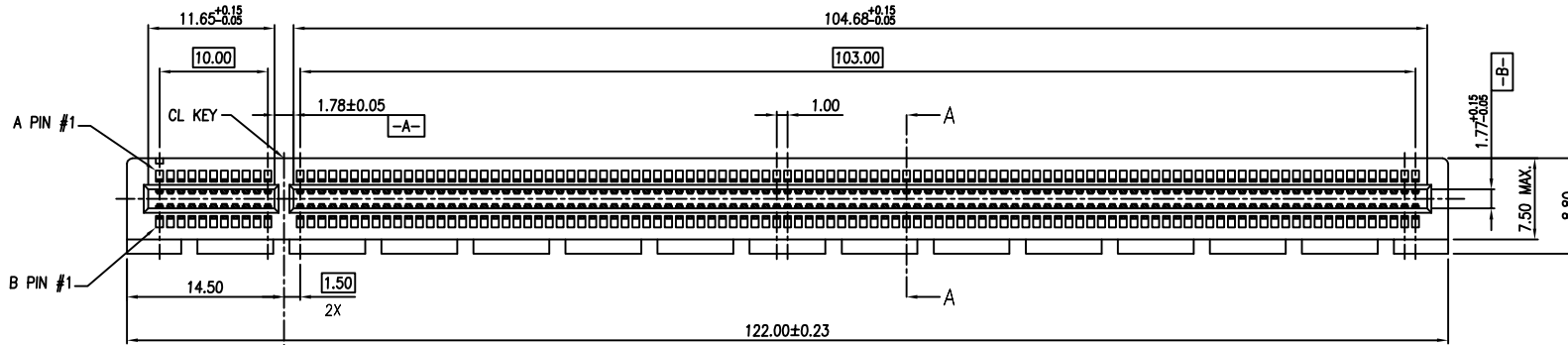
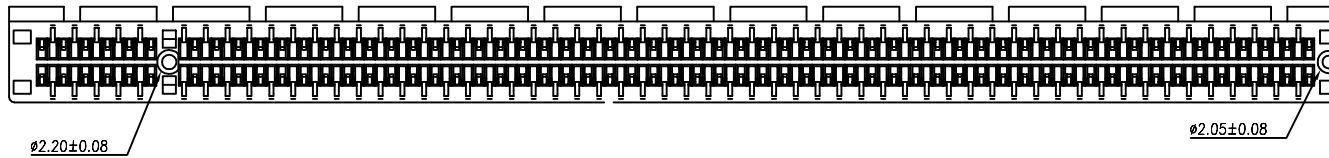
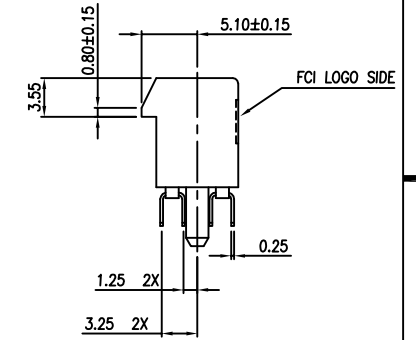
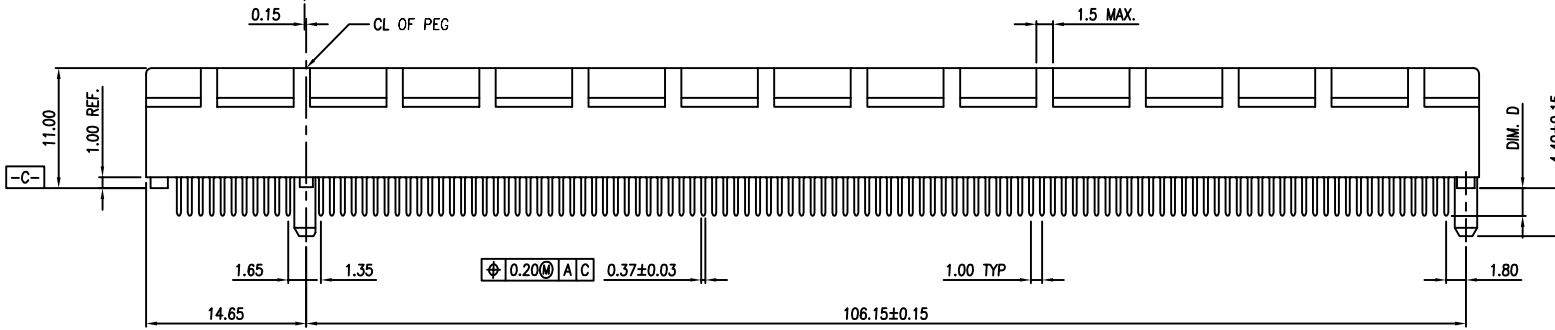


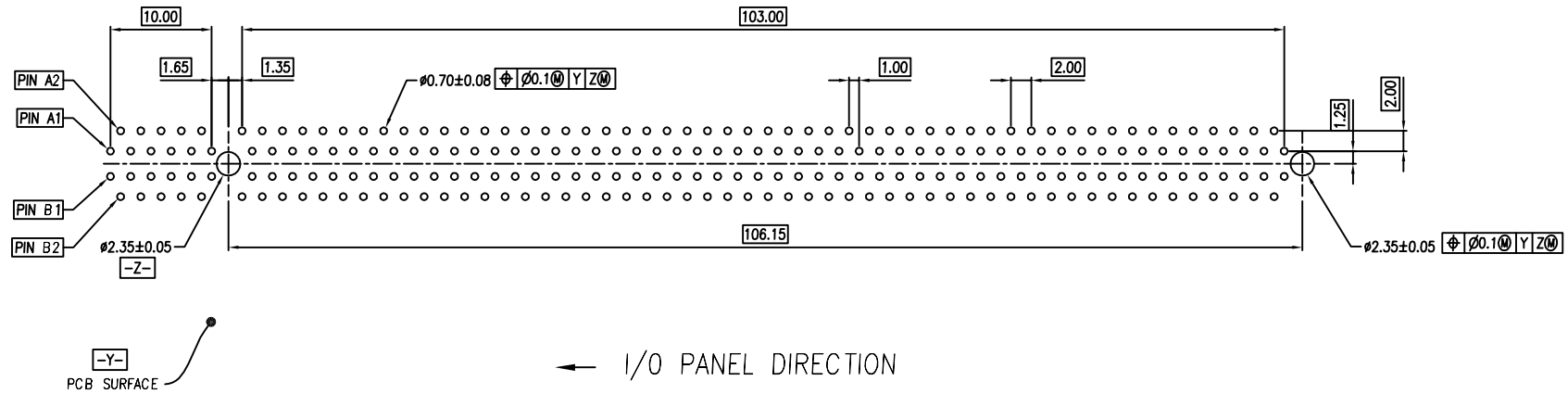
PROD NO
SEE NOTE



SECTION A-A

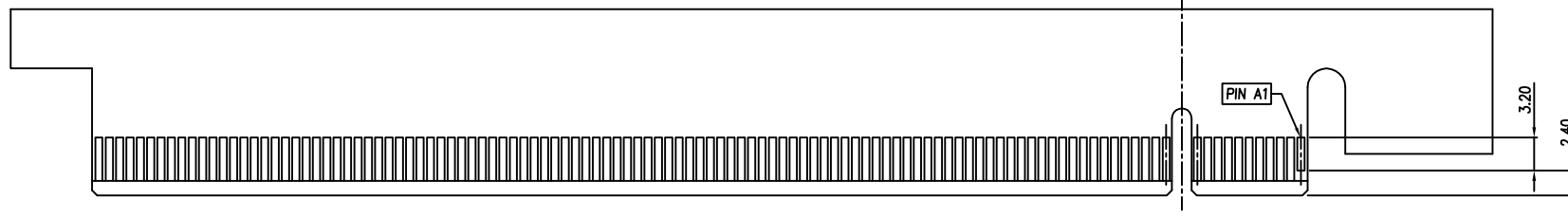


mat'l. code		-		surface		- ✓		tolerance		ASME_Y14.5		projection		product family		PCI_EXPRESS	
ltr		ecn no		dr		date		tolerances unless otherwise specified		MM		title		PCIE_230P_CARD_EDGE_GEN3		sheet 1 of 4	
A		T06-0076		J.H		11/30/05		angles		.0±0.30		scale N/A		dwg no		10063960	
B		ELX-06-2161-1		S		T05/27/15		line		.00±0.20		Amphenol FCI		size		A4	
C		---		LZH		02/07/18		±2'		.000±0.10		type		CUSTOMER Drawing		5	
sheet		revision		c		dr		WINSTON_ZHU		2022-05-26		type		CUSTOMER Drawing		B	
index		sheet		c		enrg		WINSTON_ZHU		2022-05-26		type		CUSTOMER Drawing		B	
						chr		MARS_LONG		2022-05-26							
						appd		HEAVEN_CEN		2022-05-26							

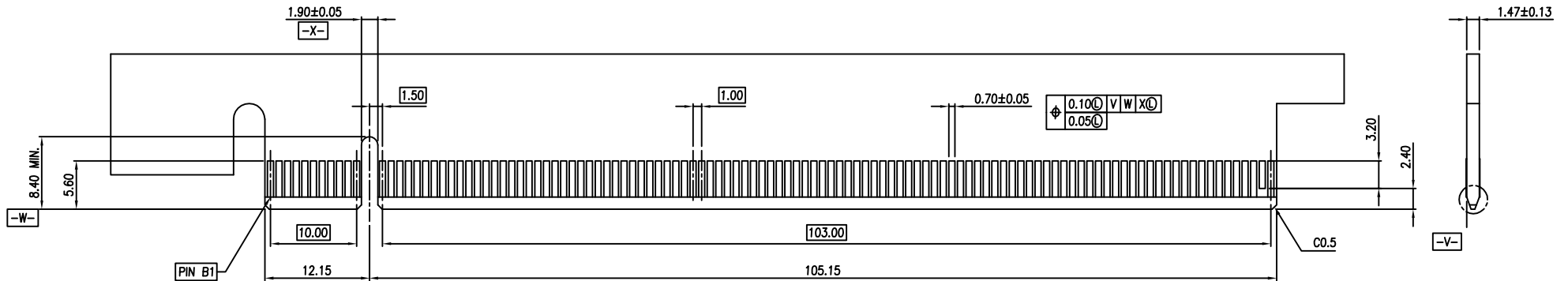


RECOMMENDED FOOTPRINT

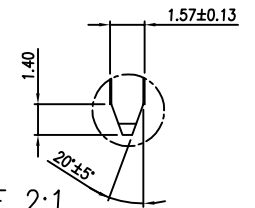
mat'l. code		-		surface		- ✓		tolerance		ASME_Y14.5		projection		product family		PCI_EXPRESS	
ltr		ecn no		dr		date		tolerances unless otherwise specified		MM		title		PCIE_230P_CARD_EDGE_GEN3		5	
								angles		.0±.0.30		scale N/A		dwg no		sheet 2 of 4 size	
								±2'		.00±.0.20		Amphenol FCI		10063960		A4	
				dr		WINSTON_ZHU		2022-05-26						type		CUSTOMER Drawing	
				engr		WINSTON_ZHU		2022-05-26									
				chr		MARS_LONG		2022-05-26									
				appd		HEAVEN_CEN		2022-05-26									
sheet index		revision sheet		c													



I/O PANEL DIRECTION SECONDARY (SOLDER) SIDE →



← I/O PANEL DIRECTION PRIMARY (COMPONENT) SIDE



SCALE 2:1

ADD-IN CARD EDGE-FINGER DIMENSIONS

mat'l. code		-		surface		- ✓		tolerance		ASME_Y14.5		projection		product family		PCI_EXPRESS	
ltr		ecn no		dr		date		tolerances unless otherwise specified		MM		title		PCIE_230P_CARD_EDGE_GEN3		sheet 3 of 4	
								angles		.0±0.30		scale N/A		dwg no		10063960	
								±2'		.00±0.20		Amphenol FCI		type		CUSTOMER Drawing	
								dr		WINSTON_ZHU		2022-05-26		size		A4	
								enr		WINSTON_ZHU		2022-05-26					
								chr		MARS_LONG		2022-05-26					
								app		HEAVEN_CEN		2022-05-26					
sheet index		revision sheet		c													

NOTES:

1.MATERIAL:

HOUSING: THERMOPLASTIC WITH GLASS FIBER, UL94V-0,
COLOR IN BLACK.

CONTACTS: COPPER ALLOY.

2.FINISH:

CONTACTS: SEE PRODUCT NUMBER CODE

3. DURABILITY: 50 CYCLES.

4. RoHS COMPATIBLE PRODUCT SPECIFICATIONS

a. PLATING: "LF" MEANS THE PRODUCT IS LEAD FREE

b. MANUFACTURING PROCESS COMPATIBILITY: THE HOUSING WILL WITHSTAND EXPOSURE TO 260C±5C
SOLDER BATH TEMPERATURE FOR 5 SECONDS IN A WAVE SOLDER APPLICATION WITH
A 1.60MM THICK CIRCUIT BOARD.

PRODUCT NUMBER CODE
10063960 - X X X X 0 X L F

HOUSING COLOR OPTIONS
1-BLACK

PEGS OPTIONS
0-PLASTIC PEGS

TERMINAL PLATING OPTIONS
0-50u" Ni UNDERPLATE
30GXT CONTACT AREA
100u" TIN TAIL AREA -----COMPATIBLE RoHS
1-50u" Ni UNDERPLATE
GXT+ CONTACT AREA
100u" TIN TAIL AREA -----COMPATIBLE RoHS
2-50u" Ni UNDERPLATE
GOLD FLASH CONTACT AREA
100u" TIN TAIL AREA -----COMPATIBLE RoHS

LEAD FREE

PACKAGING OPTIONS
T-SOFT TRAY PACKAGING
Q-HARD TRAY(323X136X19mm) PACKAGING
Z-HARD TRAY(300X128X19mm) PACKAGING +MYLAR
RESERVE

TAIL LENGTH OPTIONS

	DIM "D"	SUGGESTED PCB THICKNESS
1	3.10	2.36±0.10
2	2.54	1.56±0.10

mat'l. code		surface		tolerance		projection		product family	
-		-		ASME_Y14.5		⊕		PCI_EXPRESS	
lfr		ecn no		dr		date		title	
								PCIE_230P_CARD_EDGE_GEN3	
		angles		tolerances unless otherwise specified		MM		scale N/A	
		±2'		.02±0.30					
				.00±0.20					
				.000±0.10					
		dr		WINSTON_ZHU		2022-05-26		dwg no	
		engr		WINSTON_ZHU		2022-05-26		sheet 4 of 4	
		chr		MARS_LONG		2022-05-26		size	
		appd		HEAVEN_CEN		2022-05-26		A4	
								10063960	
								type	
								CUSTOMER Drawing	
sheet index		revision		c					
		sheet							