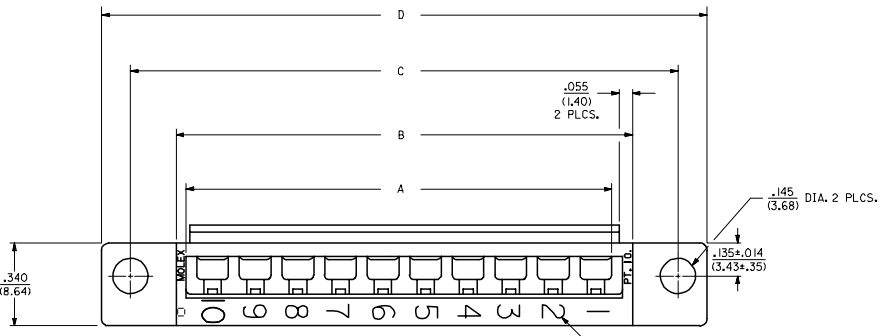


20 19 18 17 16 15 14 13 12 11 10 9 8 7 6 5 4 3 2 1

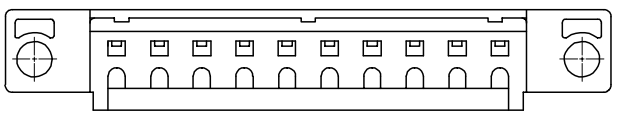
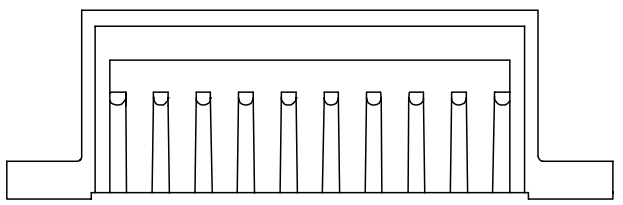
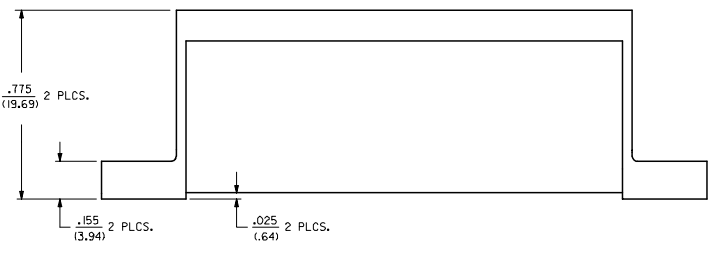
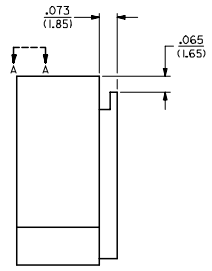
M L K J I H G F E D C B A

**NOTES:**

- △ THESE HOUSINGS ARE FOR USE WITH THE 1457-• TERMINALS AND MAY BE SUBDIVIDED BY USING THE 1461-K KEY.
- △ THE HOUSINGS ARE ONLY AVAILABLE IN 5, 10, 15, AND 20 CIRCUIT SIZES.
- △ PRODUCT SPECIFICATION PS 50-36 APPLIES.
- △ THESE HOUSINGS CONFORM TO U.L. AND C.S.A. REQUIREMENTS.
- △ .060/(1.52) HIGH RAISED NUMERALS.
- △ .125/(3.18) HIGH RECESSED NUMERALS ON A MATTE BACKGROUND.
- △ .09/(2.3) HIGH INK STAMPED NUMERALS.
- B. PACKAGE PER PK-1461-100.



VIEW A-A



4	01
3	0
2	01
1	0
SHT REV	

<b>MODIFY CORE OUTS</b> EC NO: UCP2005-2756 DRWN: SBARRA 2005/09/29 CHKD: BARKER 2005/10/18 APPR: SHILLER 2005/10/12	QUALITY SYMBOLS	GENERAL TOLERANCES (UNLESS SPECIFIED)	DIMENSION STYLE	SCALE	DESIGN UNITS	THIRD ANGLE PROJECTION
	▽=0 ▽=0	mm INCH 4 PLACES ± --- ± --- 3 PLACES ± --- ± .010 2 PLACES ± 0.25 ± .014 1 PLACE ± 0.35 ± --- ANGULAR ±1/2°	IN/MM DRAWN BY DATE AFG 91/02/18 CHECKED BY DATE RHR 91/02/18 APPROVED BY DATE GWF 91/02/18	4:1	INCH	TITLE HOUSING, COMMONING [.025/(.64) OFFSET]
	DRAFT WHERE APPLICABLE MUST REMAIN WITHIN DIMENSIONS	SEE TABLE SIZE D	MATERIAL NO. DOCUMENT NO. SD-1461-*	MOLEX INCORPORATED	SHEET NO. 1 OF 4	
	THIS DRAWING CONTAINS INFORMATION THAT IS PROPRIETARY TO MOLEX INCORPORATED AND SHOULD NOT BE USED WITHOUT WRITTEN PERMISSION					

19 18 17 16 15 14 13 12 11 10 9 8 7 6 5 4 3 2 1

