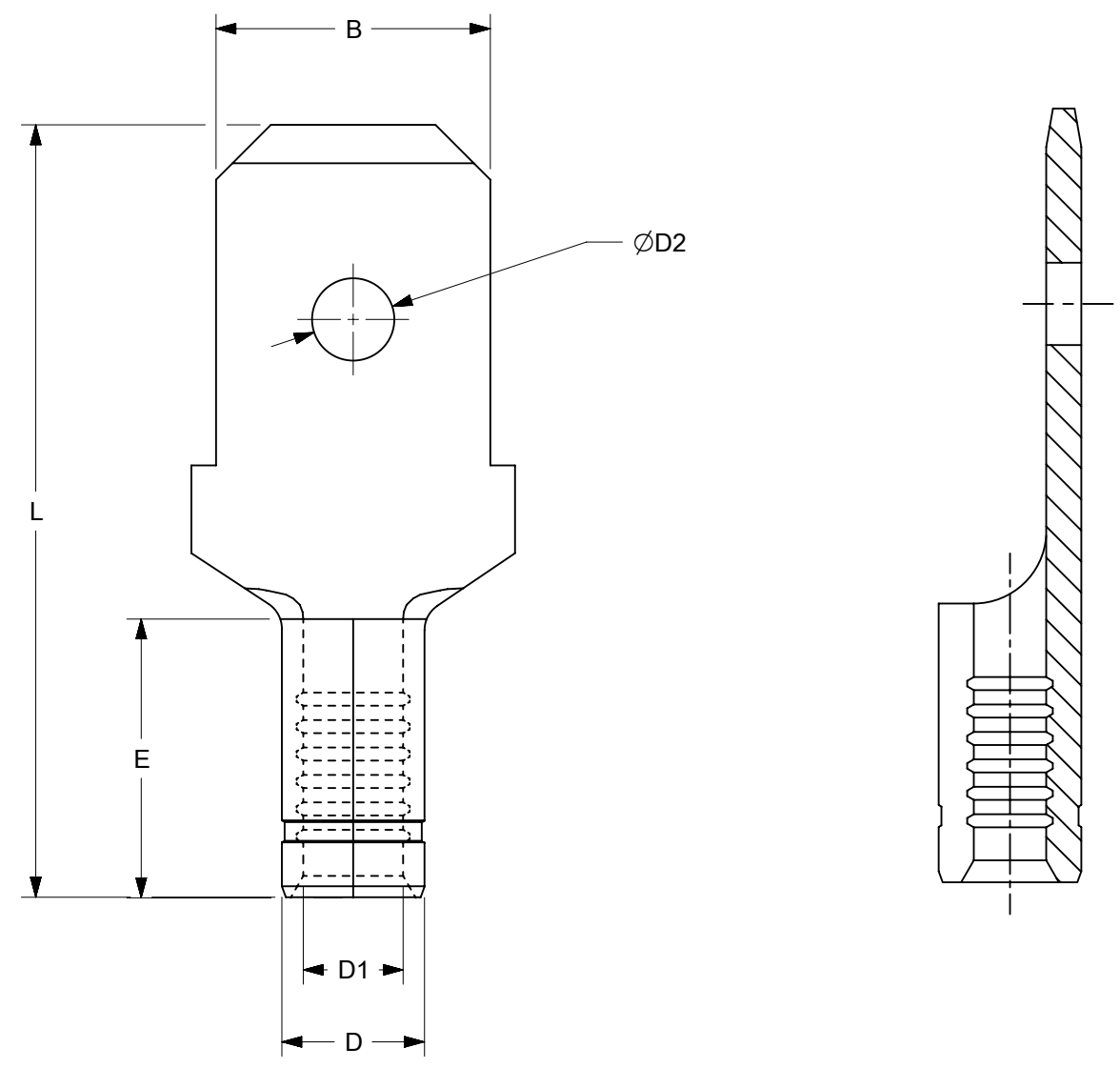


10	9	8	7	6	5	4	3	2	1
MATERIAL NUMBER	ENGINEERING NUMBER	D2 MAX	B MAX	L MAX	E MIN	D1 MIN	D MAX		
192030374	192030374	.079/2.00	.260/6.61	.721/18.32	.173/4.40	.083/2.10	.166/4.20		



NOTES:

1. MATERIAL: STEEL, .031/0.80 THICK REF
2. FINISH: NICKEL PLATED WITH OPTIONAL COPPER FLASH UNDERPLATING, IS ALLOWED FOR IMPROVED ADHESION.
3. WIRE RANGE: 16-14
4. PART IS ROHS COMPLIANT.
5. AMBIENT OPERATING TEMPERATURE UP TO 900 °F (483 °C).

(C1)

THIS DRAWING CONTAINS INFORMATION THAT IS PROPRIETARY TO MOLEX ELECTRONIC TECHNOLOGIES, LLC AND SHOULD NOT BE USED WITHOUT WRITTEN PERMISSION										
FUNCTIONAL SYMBOLS	DIMENSION UNITS		SCALE		CURRENT REV DESC: REMASTERED IN ECTR AND UPDATED NOTE					
	IN/MM		NTS							
DIVISIONAL SYMBOLS	GENERAL TOLERANCES (UNLESS SPECIFIED)				EC NO: 708789 DRWN: PAWANC 2022/05/12 CHKD: DMYRICK 2022/06/01 APPR: JMACNEIL 2022/06/02 INITIAL REVISION: DRWN: ASAYDEH 05/12/02 APPR: RDEROSS 05/12/02					
	4 PLACES	±	MM	INCH						
	3 PLACES	±								
	2 PLACES	±								
	1 PLACE	±								
0 PLACES	±				DOCUMENT NUMBER		DOC TYPE	DOC PART	REVISION	
ANGULAR TOL		±	°	SD-19203-026		PSD	001	C1		
DRAFT WHERE APPLICABLE MUST REMAIN WITHIN DIMENSIONS				THIRD ANGLE PROJECTION		DRAWING	SERIES	MATERIAL NUMBER	CUSTOMER	SHEET NUMBER
						B-SIZE	19203	SEE CHART	GENERAL MARKET	1 OF 1

**molex**

MALE CONNECTOR TERMINAL  
KRIMPTITE, STEEL, 900 DEG F (483 DEG C)

PRODUCT CUSTOMER DRAWING