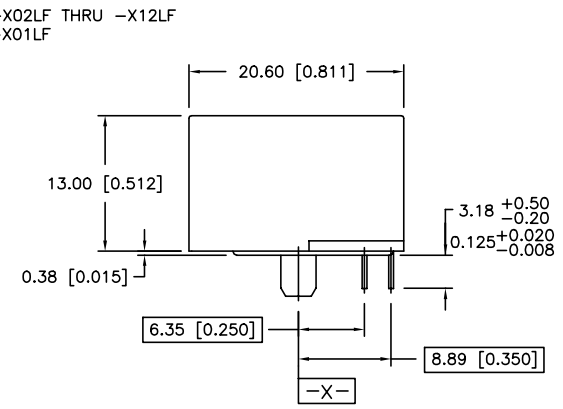
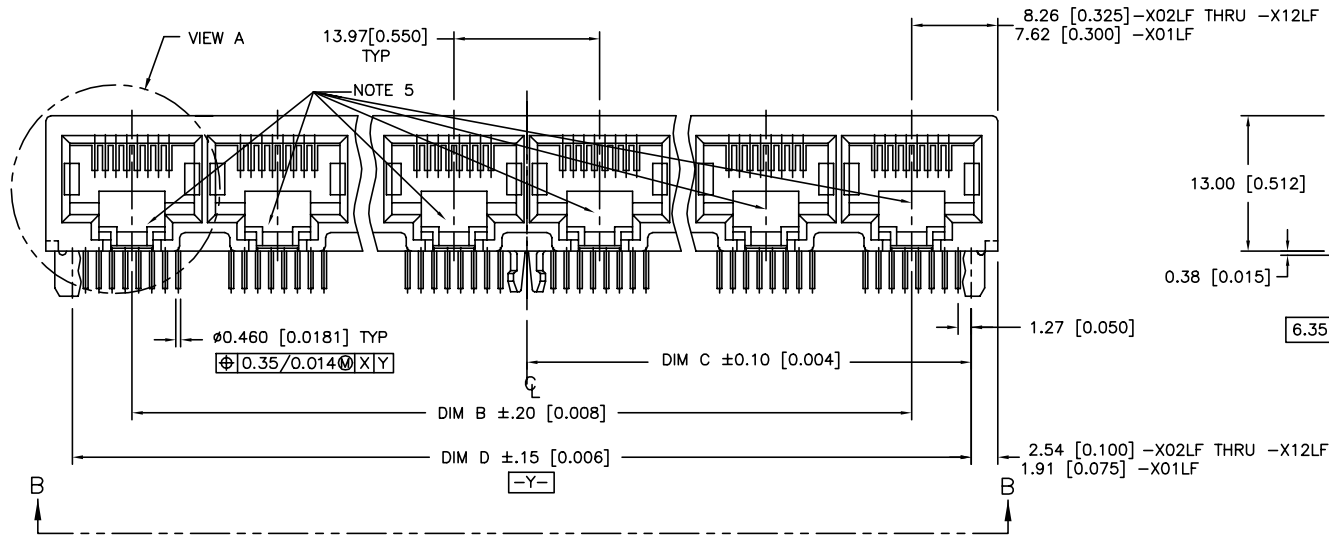
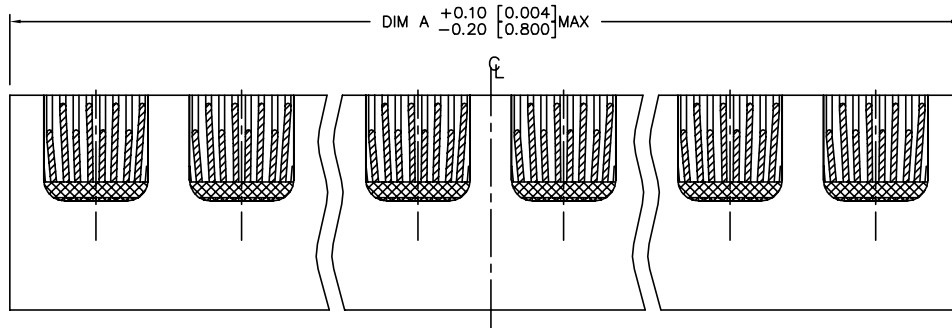
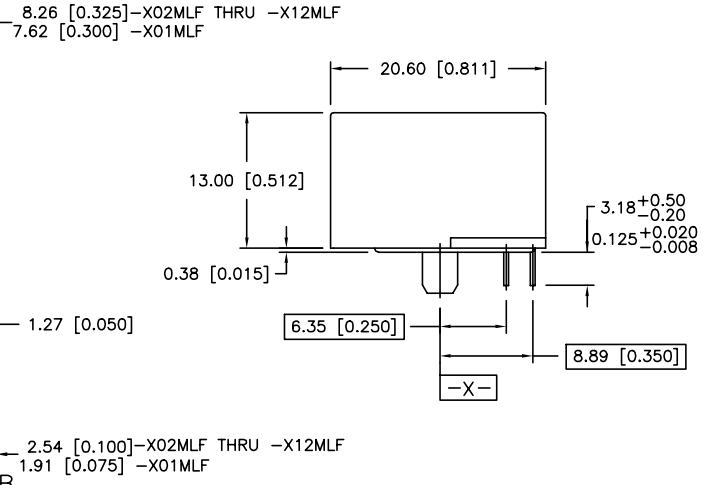
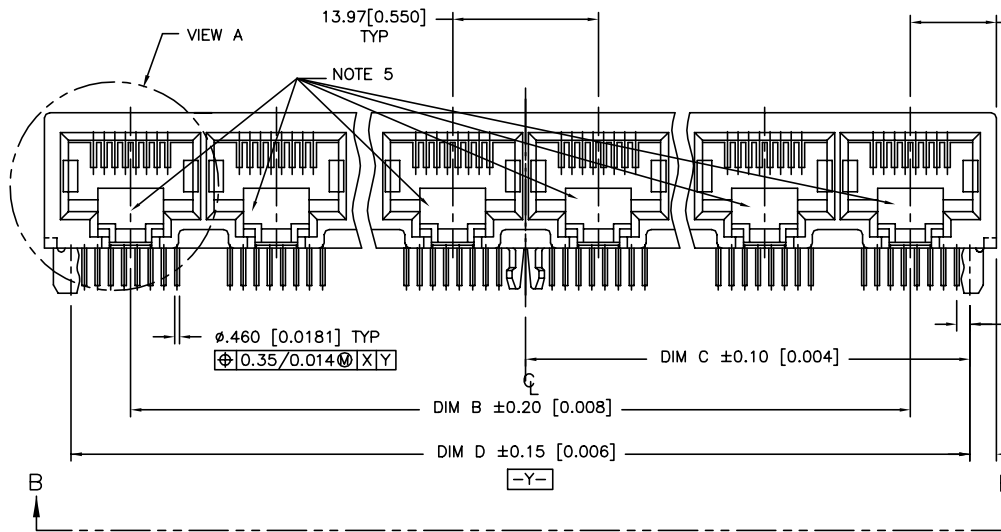
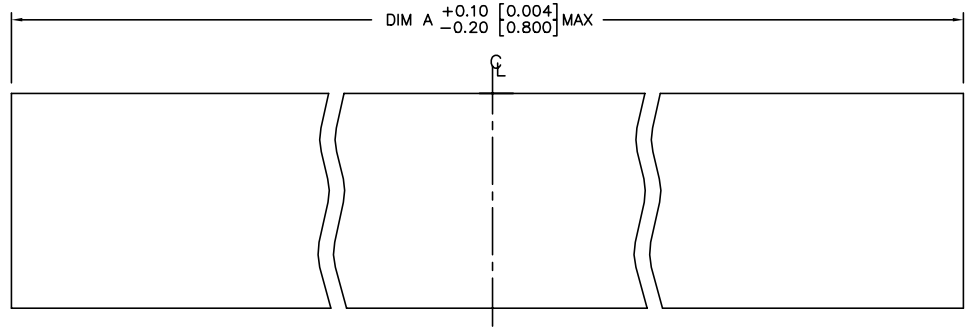


PRODUCT NO.  
SEE TABLE



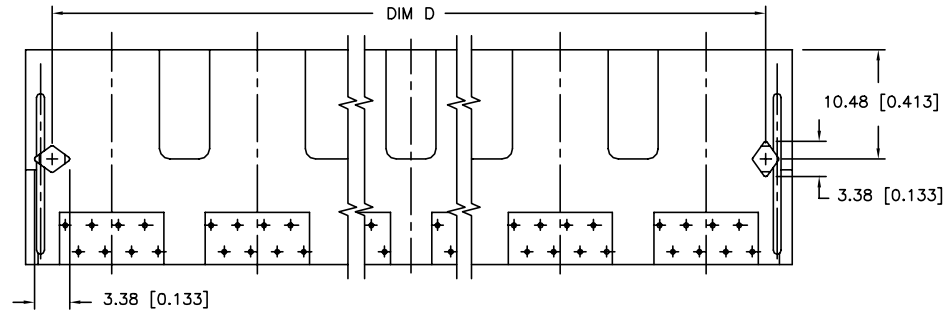
mat'l. code		surface ISO1302 ✓		tolerance ISO1101 ISO406		projection ISO 1:2		product family MOD JACK	
l	tr	ec	n	no	dr	date	date	date	date
F	T80171	CATHY	6/10/98	angle	0°±2'	0.X±0.3	mm	R/A 8 POS GANG JACK ASSY	
G	V12594	LP	3/20/02	0°±2'	0.XX±0.15	0.XXX±0.05	scale 1.0	UNSHIELDED DIAMOND PEG	
H	V03-1103	PJ	10/21/03	dr	KCHOU	3/18/93		dwg no	sheet 1 of 5
J	N04-0119	MHT	12/9/04	engr	TC	3/18/93		94711	A4
K	ELX-N-010992	SH MNO	3/14/12	chr	J.TSAO	3/18/93		type	Product Customer Drawing
				appd	J.TSAO	3/18/93			
sheet index	revision	K	K	K	K	K			
	sheet	1	2	3	4	5			

PRODUCT NO.  
SEE TABLE



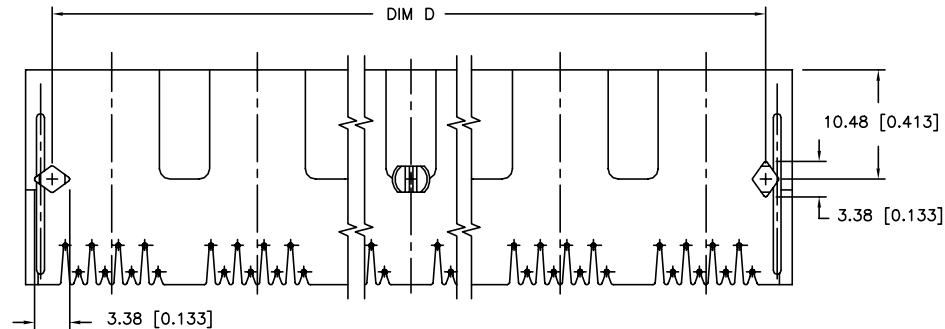
mat'l. code		surface ISO1302 ✓		tolerance ISO1101 ISO406		projection mm		product family MOD JACK	
ltr	ecnr	nodr	date	tolerances unless otherwise specified		title		R/A 8 POS GANG JACK ASSY	
F	T80171	CATHY	6/10/98	angle	0.X±0.3	scale 1.0		UNSHIELDED DIAMOND PEG	
G	V12594	LP	3/20/02	0°±2'	0.XX±0.15			dwg no	
H	V03-1103	PJ	10/21/03	dr	0.XXX±0.05			sheet 2 of 5	
J	N04-0119	MHT	12/9/04	enr	KCHOU	3/18/93	FCI		size
K	ELX-N-010992	SH MMD	3/14/12	chr	J.TSAO	3/18/93	94711		A4
sheet index		revision sheet		appd		J.TSAO	3/18/93	type Product Customer Drawing	

PRODUCT NO.  
SEE TABLE



VIEW B-B

-XXXLF PRODUCT ONLY (WITHOUT CENTER PEG - SEE NOTE 4)



VIEW B-B

-XXXMLF PRODUCT ONLY (WITH CENTER PEG - SEE NOTE 3)

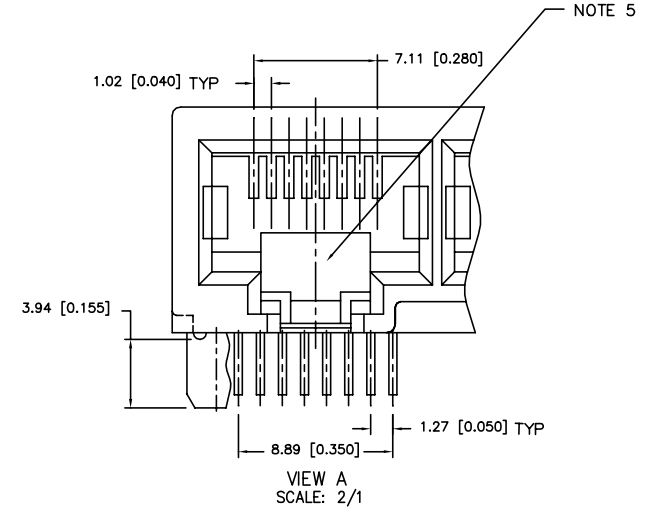
mat'l. code		surface		tolerance		projection		product family		
		ISO1302 ✓		ISO1101 ISO406				MOD JACK		
ltr ecn nodr		date		tolerances unless otherwise specified		mm		title		
F	T80171 CATHY	6/10/98		0.X±0.3		← mm →		R/A 8 POS GANG JACK ASSY		
G	V12594 LP	3/20/02		0.XX±0.15		scale 1.0		UNSHIELDED DIAMOND PEG		
H	V03-1103 PJ	10/21/03		0.XXX±0.05						
J	N04-0119 MHT	12/9/04		dr	KCHOU	3/18/93		dwg no sheet 3 of 5 size		
K	ELX-N-010992 SH MMD	3/14/12		enr	TC	3/18/93		94711 A4		
				chr	J.TSAO	3/18/93				
				appd	J.TSAO	3/18/93		type Product Customer Drawing		
sheet	revision									
index	sheet									



PRODUCT No.	NO OF PORTS	DIM A <sup>+0.10 [0.004]</sup> <sub>-0.20 [0.008]</sub>	DIM B	DIM C ±0.10 [0.004]	DIM D ±0.15 [0.006]
94711-X01MLF	1	15.24 [0.600]	-----	5.72 [0.225]	11.43 [0.450]
94711-X02MLF	2	30.48 [1.200]	13.97 [0.550]	12.70 [0.500]	25.40 [1.000]
94711-X03MLF	3	44.45 [1.750]	27.94 [1.100]	19.69 [0.775]	39.37 [1.550]
94711-X04MLF	4	58.42 [2.300]	41.91 [1.650]	26.67 [1.050]	53.34 [2.100]
94711-X05MLF	5	72.39 [2.850]	55.88 [2.200]	33.66 [1.325]	67.31 [2.650]
94711-X06MLF	6	86.36 [3.400]	69.85 [2.750]	40.64 [1.600]	81.28 [3.200]
94711-X07MLF	7	100.33 [3.950]	83.82 [3.300]	47.63 [1.875]	95.25 [3.750]
94711-X08MLF	8	114.30 [4.500]	97.79 [3.850]	54.61 [2.150]	109.22 [4.300]
94711-X09MLF	9	128.27 [5.050]	111.76 [4.400]	61.60 [2.425]	123.19 [4.850]
94711-X10MLF	10	142.24 [5.600]	125.73 [4.950]	68.58 [2.700]	137.16 [5.400]
94711-X11MLF	11	156.21 [6.150]	139.70 [5.500]	75.57 [2.975]	151.13 [5.950]
94711-X12MLF	12	170.18 [6.700]	153.67 [6.050]	82.55 [3.250]	165.10 [6.500]

PRODUCT No.	NO OF PORTS	DIM A <sup>+0.10 [0.004]</sup> <sub>-0.20 [0.008]</sub>	DIM B	DIM C ±0.10 [0.004]	DIM D ±0.15 [0.006]
94711-X01LF	1	15.24 [0.600]	-----	5.72 [0.225]	11.43 [0.450]
94711-X02LF	2	30.48 [1.200]	13.97 [0.550]	12.70 [0.500]	25.40 [1.000]
94711-X03LF	3	44.45 [1.750]	27.94 [1.100]	19.69 [0.775]	39.37 [1.550]
94711-X04LF	4	58.42 [2.300]	41.91 [1.650]	26.67 [1.050]	53.34 [2.100]
94711-X05LF	5	72.39 [2.850]	55.88 [2.200]	33.66 [1.325]	67.31 [2.650]
94711-X06LF	6	86.36 [3.400]	69.85 [2.750]	40.64 [1.600]	81.28 [3.200]
94711-X07LF	7	100.33 [3.950]	83.82 [3.300]	47.63 [1.875]	95.25 [3.750]
94711-X08LF	8	114.30 [4.500]	97.79 [3.850]	54.61 [2.150]	109.22 [4.300]
94711-X09LF	9	128.27 [5.050]	111.76 [4.400]	61.60 [2.425]	123.19 [4.850]
94711-X10LF	10	142.24 [5.600]	125.73 [4.950]	68.58 [2.700]	137.16 [5.400]
94711-X11LF	11	156.21 [6.150]	139.70 [5.500]	75.57 [2.975]	151.13 [5.950]
94711-X12LF	12	170.18 [6.700]	153.67 [6.050]	82.55 [3.250]	165.10 [6.500]

NOTE: PLEASE CHECK FOR AVAILABILITY, NOT ALL OPTIONS AVAILABLE.



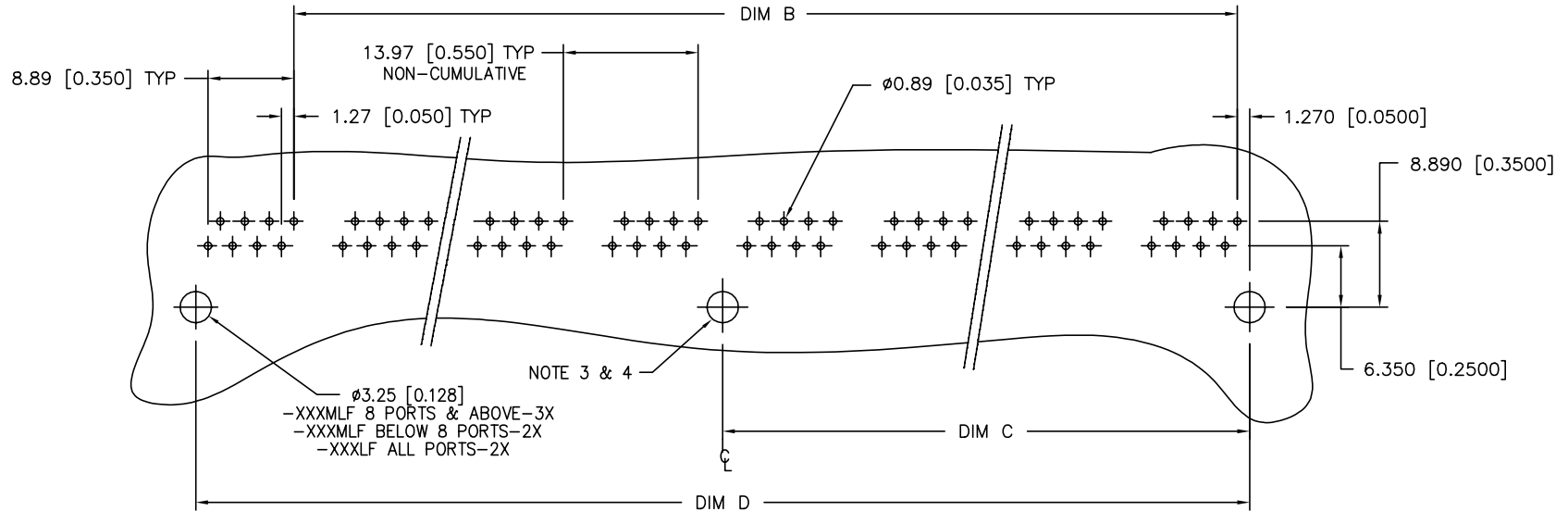
PLATING CODE X	PLATING
0	5u" Au + high performance lubricant
1	.38uM/15u" GTX
3	5u" Au + high performance lubricant
5	1.27uM/50u" GTX

NOTES:

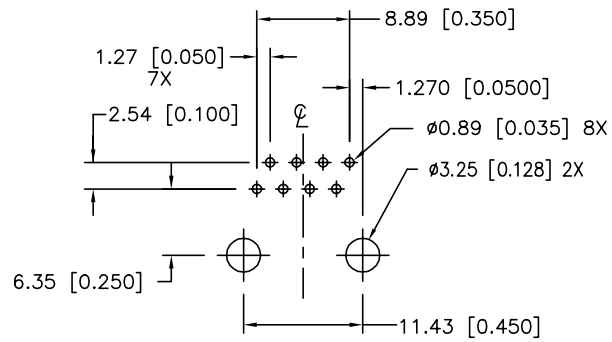
1. APPLICABLE PC BOARD THICKNESS: 1.60 [0.062].
2. CONTACTS: PHOSPHOR BRONZE ALLOY UNS-C51000, Ø0.460 [0.0181] ROUND WIRE, SEE TABLE FOR PLATING.
- ③ CENTER PEG FOR 8 PORTS AND ABOVE, (-XXXMLF PRODUCT ONLY).
- ④ NO CENTER PEG FOR -XXXLF PRODUCT.
5. COMPANY LOGO LOCATED IN THIS AREA.
6. PART NUMBERS WITH LF IN THE END ARE LEAD FREE
7. THIS PRODUCT MEETS EUROPEAN UNION DIRECTIVES AND OTHER COUNTRY REGULATION AS DESCRIBED IN GS-22-008.
8. THE HOUSING WITHSTAND EXPOSURE TO 260° PEAK TEMPERATURE FOR 15 SECONDS IN CONVENTION INFRA-RED OR VAPOR PHASE REFLOW OVEN.

mat'l. code		surface <input checked="" type="checkbox"/> ISO1302		tolerance <input checked="" type="checkbox"/> ISO1101 <input checked="" type="checkbox"/> ISO406		projection		product family MOD JACK		
ltr ecn nodr		date		tolerances unless otherwise specified		mm		R/A 8 POS GANG JACK ASSY UNSHIELDED DIAMOND PEG		
F	T80171	CATHY	6/10/98	angle	0.X±0.3	scale 1.0		dwg no		
G	V12594	LP	3/20/02	0°±2'	0.XX±0.15			sheet 4 of 5		
H	V03-1103	PJ	10/21/03		0.XXX±0.05			size		
J	N04-0119	MHT	12/9/04	dr	KCHOU	3/18/93			A4	
K	ELX-N-010992	SH MNO	3/14/12	enr	TC	3/18/93			94711	
				chr	J.TSAO	3/18/93			type Product Customer Drawing	
				appd	J.TSAO	3/18/93				
sheet	revision									
index	sheet									

PRODUCT NO.  
SEE TABLE



RECOMMENDED PC BOARD LAYOUT  
(2 THRU 12 PORTS)



RECOMMENDED PC BOARD LAYOUT  
(1 PORT)

mat'l. code		surface ISO1302 ✓		tolerance ISO1101 ISO406		projection ASME Y14.5		product family MOD JACK	
l	tr	ec	nd	dr	date	tolerances unless otherwise specified		title	
F	T80171	CATHY	6/10/98	angle	3/18/93	0.X±0.3		R/A 8 POS GANG JACK ASSY	
G	V12594	LP	3/20/02	size	3/18/93	0.XX±0.15		UNSHIELDED DIAMOND PEG	
H	V03-1103	PJ	10/21/03	0°±2'	3/18/93	0.XXX±0.05		scale 1.0	
J	N04-0119	MHT	12/9/04	dir	KCHOU	3/18/93		dwg no	
K	ELX-N-010992	SH MMD	3/14/12	enr	TC	3/18/93		sheet 5 of 5	
				chr	J.TSAO	3/18/93		size	
				appd	J.TSAO	3/18/93		A4	
sheet index		revision sheet						type Product Customer Drawing	

